

*A Statistical Report on*

**CHILD ABUSE AND NEGLECT  
IN HAWAII**

**2009**

**Prepared by**

**State of Hawaii  
Department of Human Services  
Management Services Office**

## TABLE OF CONTENTS

### LIST OF TABLES

Summary	1
Duplicated Count of Children by County: Reported and Confirmed, 2005 - 2009	4
Abuse and Neglect Types By County, Duplicated Count of Types for Each Child	5
Abuse and Neglect Types By County, Unduplicated Count of Types for Each Child	6
Unduplicated Count of Children by County District	7
Duplicated Count of Children by County Districts, 2005 - 2009	8
Duplicated Count of Children by Source of Initial Reporter, 2005 - 2009	9
Age of Confirmed Duplicated Count of Children, 2005 - 2009	11
Sex of Confirmed Duplicated Count of Children, 2005 - 2009	11
Race of Confirmed Duplicated Count of Children, 2005 - 2009	12
Severity of Harm of Confirmed Duplicated Count of Children, 2005 - 2009	12
Age, Sex, and Race of Confirmed Unduplicated Children	13
Recurrence Rate	14
Perpetrators of Confirmed Victims: Age and Sex	17
Perpetrator Relationship to Victim, 2005 - 2009	18
Age of Perpetrator, 2005 - 2009	18
Sex of Perpetrator, 2005 - 2009	18

### LIST OF FIGURES

Duplicated Count of Children, 2005 - 2009	2
Percentage of Duplicated Count of Children by County	3
Duplicated Count of Children by County: Reported and Confirmed, 2005 - 2009	4
Duplicated Count of Children by Source of Initial Reporter	10
Age and Sex of Perpetrators of Confirmed Duplicated Count of Children	15
Perpetrator Relationship to Victim	16

### MILITARY

Duplicated Count of Children by Military Branch and Rank, 2005 - 2009	19
Abuse and Neglect Types, Duplicated and Unduplicated Count of Types	20
Duplicated Count of Children by Source of Initial Reporter, 2005 - 2009	21
Age of Confirmed Duplicated Count of Children, 2005 - 2009	22
Sex of Confirmed Duplicated Count of Children, 2005 - 2009	22
Race of Confirmed Duplicated Count of Children, 2005 - 2009	23
Severity of Harm of Confirmed Duplicated Count of Children, 2005 - 2009	23

## CHILD ABUSE AND NEGLECT IN HAWAII, 2009 SUMMARY

	HAWAII	OAHU	KAUAI	MAUI	TOTAL
<b>INTAKES</b>					
Confirmed	239	721	56	163	1,179
Not Confirmed	334	1,249	113	269	1,965
Total Reported	573	1,970	169	432	3,144
Percent Confirmed	42%	37%	33%	38%	38%
 <b>DUPLICATED COUNT OF CHILDREN</b>					
Confirmed	422	1,360	96	296	2,174
Not Confirmed	659	2,393	209	504	3,765
Total Reported	1,081	3,753	305	800	5,939
Percent Confirmed	39%	36%	31%	37%	37%
 <b>UNDUPLICATED COUNT OF CHILDREN</b>					
Confirmed	404	1,322	93	283	2,102
Not Confirmed	599	2,229	188	461	3,477
Total Reported	1,003	3,551	281	744	5,579
Percent Confirmed	40%	37%	33%	38%	38%

**Intakes:** reports accepted for investigation.

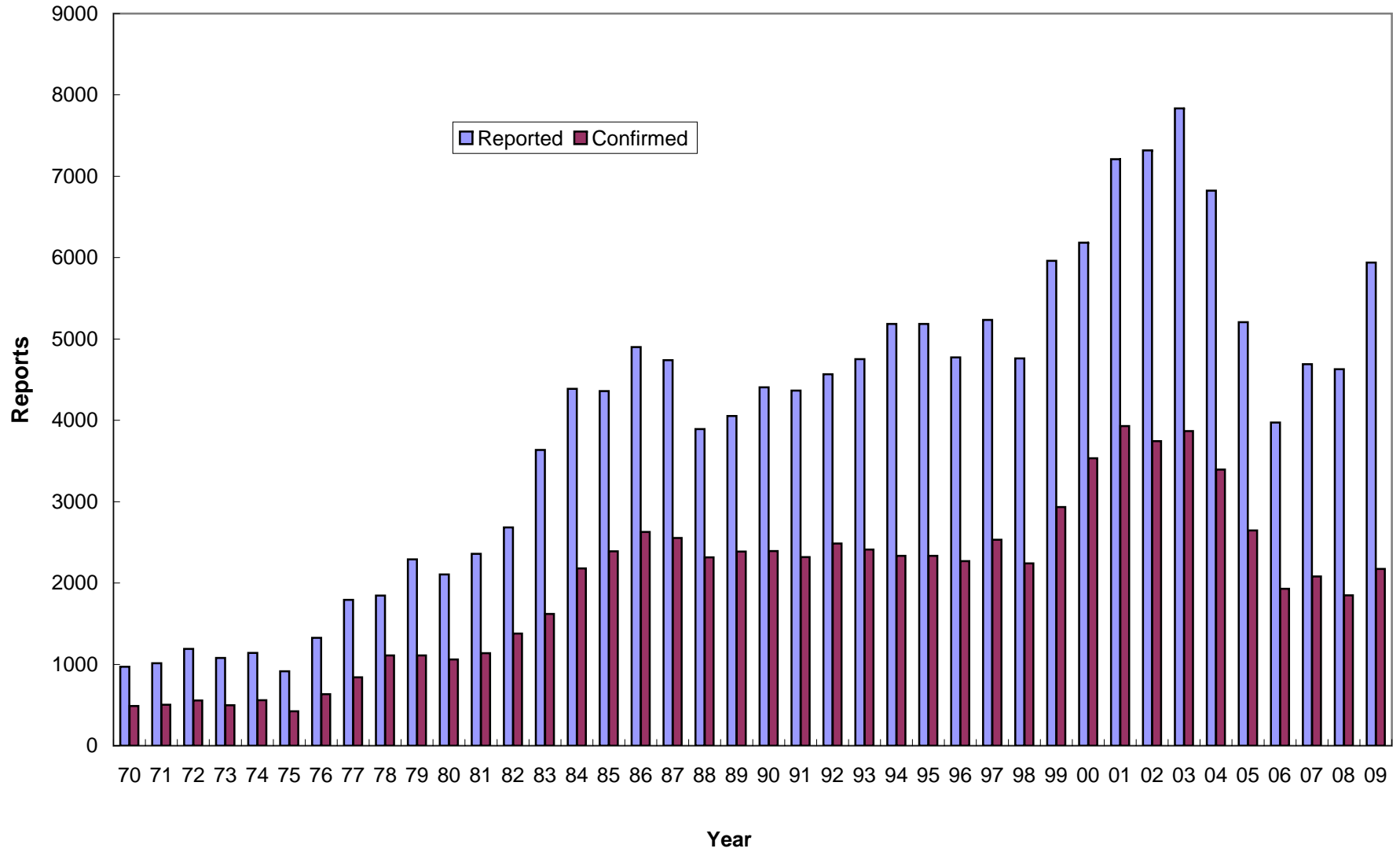
**Duplicated count:** counted by reports, a child is counted each time that he/she was found to be a victim.

**Unduplicated count:** counted by child, a child is counted only once during the reporting period, regardless of how many times the child was reported.

**Note:** In this report, data from 1999 and before were based on report date, data from 2000 and after were based on disposition date.

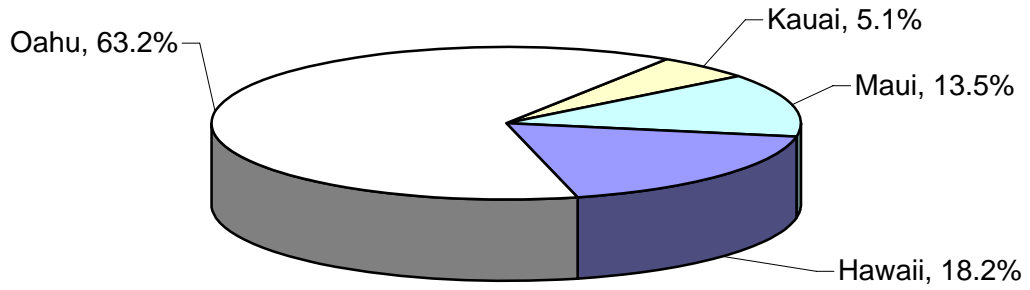
## CHILD ABUSE AND NEGLECT IN HAWAII, 1970-2009

### Duplicated Count of Children

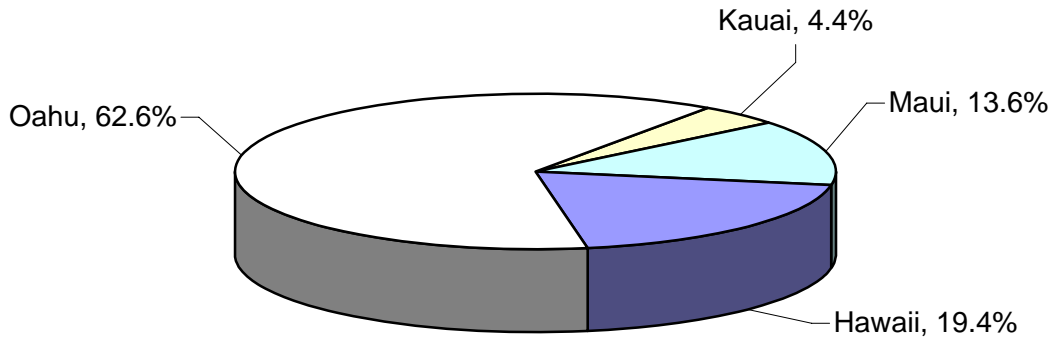


# CHILD ABUSE AND NEGLECT IN HAWAII, 2009

## Total Count of Children



## Total Count of Children

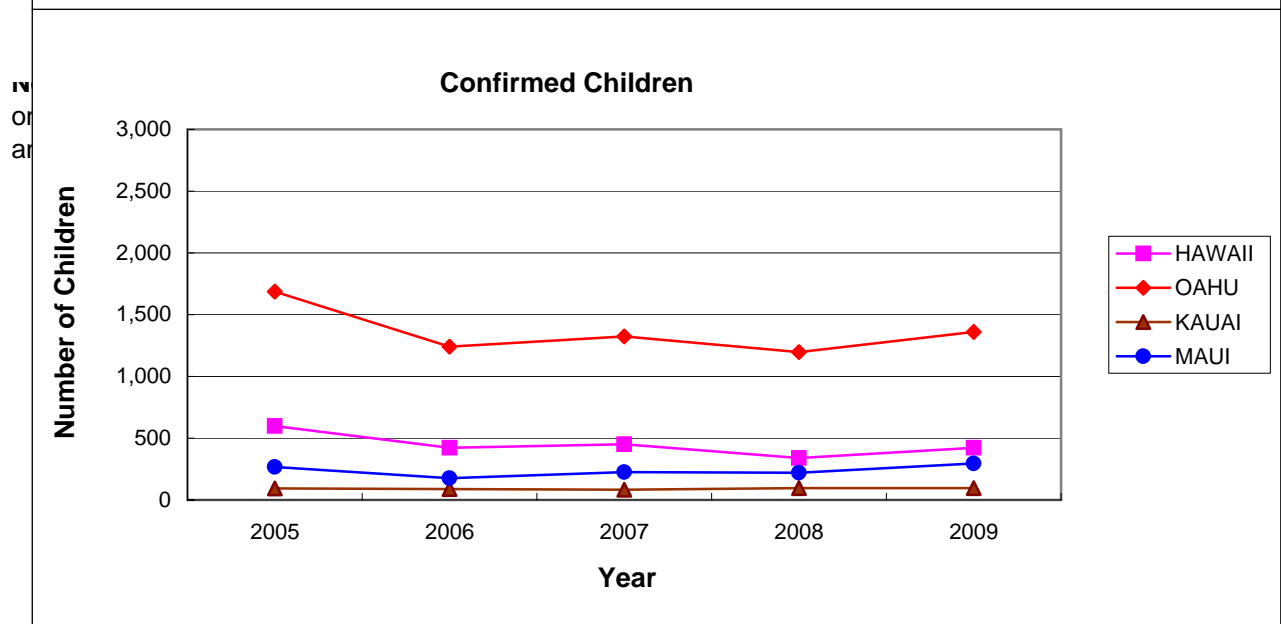
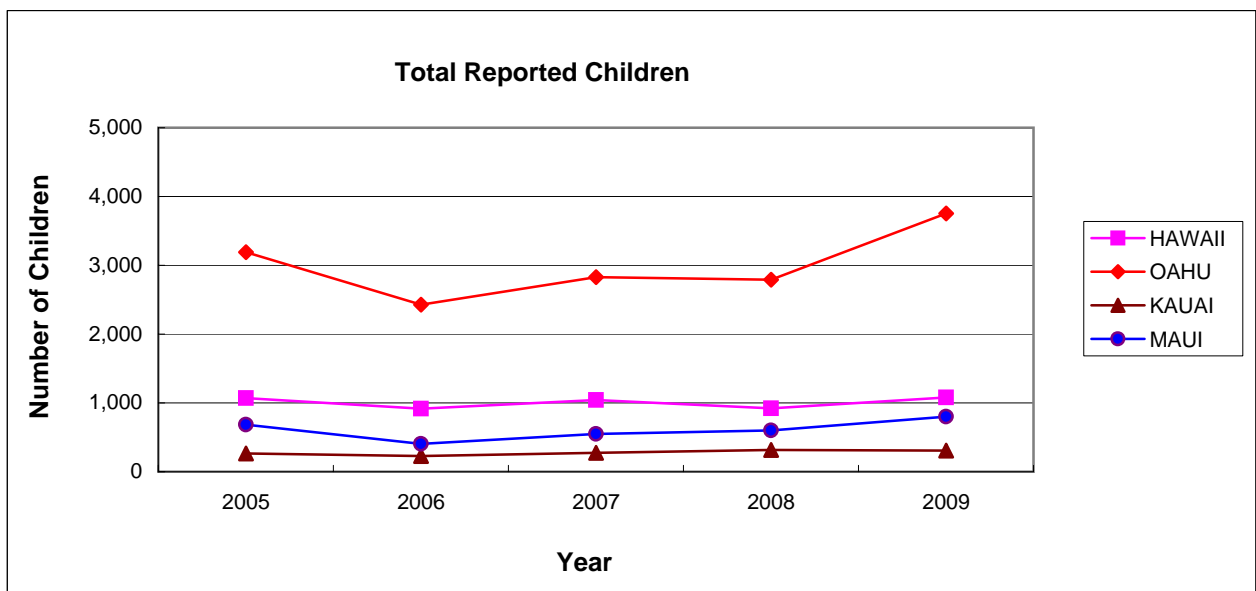


## Count of Confirmed Children

## CHILD ABUSE AND NEGLECT IN HAWAII, 2005-2009

### Duplicated Count of Children by County

DISTRICT	REPORTED					CONFIRMED				
	2005	2006	2007	2008	2009	2005	2006	2007	2008	2009
HAWAII	1,069	914	1,040	922	1,081	598	422	450	339	422
OAHU	3,189	2,429	2,826	2,790	3,753	1,686	1,242	1,324	1,196	1,360
KAUAI	267	226	274	316	305	93	87	82	95	96
MAUI	682	405	550	600	800	268	177	226	220	296
<b>STATE</b>	<b>5,207</b>	<b>3,974</b>	<b>4,690</b>	<b>4,628</b>	<b>5,939</b>	<b>2,645</b>	<b>1,928</b>	<b>2,082</b>	<b>1,850</b>	<b>2,174</b>



## CHILD ABUSE AND NEGLECT IN HAWAII, 2009

### ABUSE AND NEGLECT TYPES BY COUNTY

#### DUPLICATED COUNT OF TYPES FOR EACH CHILD\*

<b>Total Reported:</b>	<b>HAWAII</b>	<b>OAHU</b>	<b>KAUAI</b>	<b>MAUI</b>	<b>Total</b>
Physical Abuse	191	608	52	127	978
Neglect	250	609	50	100	1,009
Medical Neglect	16	50	2	13	81
Sexual Abuse	63	170	19	47	299
Psychological Abuse	8	40	2	8	58
Threatened Harm	1,012	3,579	287	772	5,650
<b>Total</b>	<b>1,540</b>	<b>5,056</b>	<b>412</b>	<b>1,067</b>	<b>8,075</b>

#### **Confirmed:**

Physical Abuse	46	140	10	13	209
Neglect	86	183	8	31	308
Medical Neglect	8	20	0	3	31
Sexual Abuse	16	49	5	6	76
Psychological Abuse	2	5	1	0	8
Threatened Harm	387	1,251	89	280	2,007
<b>Total</b>	<b>545</b>	<b>1,648</b>	<b>113</b>	<b>333</b>	<b>2,639</b>

#### **Confirmation Rate by Type**

Physical Abuse	24%	23%	19%	10%	21%
Neglect	34%	30%	16%	31%	31%
Medical Neglect	50%	40%	0%	23%	38%
Sexual Abuse	25%	29%	26%	13%	25%
Psychological Abuse	25%	13%	50%	0%	14%
Threatened Harm	38%	35%	31%	36%	36%
<b>Total</b>	<b>35%</b>	<b>33%</b>	<b>27%</b>	<b>31%</b>	<b>33%</b>

\* A child may have more than one type of abuse/neglect per report and may have been reported more than once within the reporting period. Therefore, the sum of the abuse/neglect types exceeds the count of children.

## CHILD ABUSE AND NEGLECT IN HAWAII, 2009

### ABUSE AND NEGLECT TYPES BY COUNTY

#### UNDUPLICATED COUNT OF TYPES FOR EACH CHILD\*

#### Total Reported:

	HAWAII	OAHU	KAUAI	MAUI	Total
Physical Abuse	187	594	50	122	953
Neglect	239	598	48	100	985
Medical Neglect	15	50	2	13	80
Sexual Abuse	61	166	19	46	292
Psychological Abuse	8	39	2	8	57
Threatened Harm	943	3,399	264	719	5,325
<b>Total</b>	<b>1,453</b>	<b>4,846</b>	<b>385</b>	<b>1,008</b>	<b>7,692</b>

#### Confirmed:

Physical Abuse	46	139	9	13	207
Neglect	84	181	8	31	304
Medical Neglect	8	20	0	3	31
Sexual Abuse	16	49	5	6	76
Psychological Abuse	2	5	1	0	8
Threatened Harm	371	1,217	86	272	1,946
<b>Total</b>	<b>527</b>	<b>1,611</b>	<b>109</b>	<b>325</b>	<b>2,572</b>

#### Confirmation Rate by Type

Physical Abuse	25%	23%	18%	11%	22%
Neglect	35%	30%	17%	31%	31%
Medical Neglect	53%	40%	0%	23%	39%
Sexual Abuse	26%	30%	26%	13%	26%
Psychological Abuse	25%	13%	50%	0%	14%
Threatened Harm	39%	36%	33%	38%	37%
<b>Total</b>	<b>36%</b>	<b>33%</b>	<b>28%</b>	<b>32%</b>	<b>33%</b>

\* A child may have more than one type of abuse/neglect per report and may have been reported more than once within the reporting period, but the same maltreatment was counted only once . Therefore, the sum of the abuse/neglect types exceeds the count of children.



## CHILD ABUSE AND NEGLECT IN HAWAII, 2009

### NUMBER OF UNDUPLICATED CHILDREN BY DISTRICT

	CONFIRMED	NOT CONFIRMED	TOTAL
<b>HAWAII</b>			
N. Hilo	2	0	2
S. Hilo	82	131	213
Puna	100	131	231
Kau	20	6	26
S. Kona	10	13	23
N. Kona	20	32	52
S. Kohala	10	19	29
N. Kohala	0	6	6
Hamakua	5	18	23
Unspecified	155	243	398
<b>Total</b>	<b>404</b>	<b>599</b>	<b>1,003</b>
<b>OAHU</b>			
Honolulu	328	621	949
Ewa	365	641	1,006
Wahiawa	141	206	347
Waianae	231	293	524
Waialua	15	52	67
Koolauloa	28	43	71
Koolaupoko	152	273	425
Unspecified	62	100	162
<b>Total</b>	<b>1,322</b>	<b>2,229</b>	<b>3,551</b>
<b>KAUAI</b>			
Lihue	18	33	51
Koloa	10	18	28
Waimea	8	33	41
Hanalei	1	8	9
Kawaihau	26	27	53
Unspecified	30	69	99
<b>Total</b>	<b>93</b>	<b>188</b>	<b>281</b>
<b>MAUI</b>			
Lahaina	24	35	59
Wailuku	108	155	263
Makawao	47	70	117
Hana	0	2	2
Molokai	8	24	32
Lanai	7	0	7
Unspecified	89	175	264
<b>Total</b>	<b>283</b>	<b>461</b>	<b>744</b>
<b>STATE TOTAL</b>	<b>2,102</b>	<b>3,477</b>	<b>5,579</b>

## CHILD ABUSE AND NEGLECT IN HAWAII, 2005-2009

### Duplicated Count of Children by County District

DISTRICT	REPORTED					CONFIRMED				
	2005	2006	2007	2008	2009	2005	2006	2007	2008	2009
<b>HAWAII COUNTY</b>	<b>1,069</b>	<b>914</b>	<b>1,040</b>	<b>922</b>	<b>1,081</b>	<b>598</b>	<b>422</b>	<b>450</b>	<b>339</b>	<b>422</b>
N. Hilo	9	4	3	0	2	0	0	1	0	2
S. Hilo	197	157	167	168	236	121	86	67	66	86
Puna	247	181	177	143	248	129	79	45	51	100
Kau	36	26	32	26	31	20	21	25	14	25
S. Kona	28	25	16	11	30	17	8	12	4	12
N. Kona	90	45	41	63	56	53	23	17	18	21
S. Kohala	59	42	44	11	29	36	15	26	7	10
N. Kohala	14	16	7	11	6	8	4	3	3	0
Hamakua	9	14	7	10	24	4	3	2	1	5
Unspecified	380	404	546	479	419	210	183	252	175	161
<b>OAHU</b>	<b>3,189</b>	<b>2,429</b>	<b>2,826</b>	<b>2,790</b>	<b>3,753</b>	<b>1,686</b>	<b>1,242</b>	<b>1,324</b>	<b>1,196</b>	<b>1,360</b>
Honolulu	815	634	740	735	1,022	415	302	336	293	348
Ewa	759	665	809	748	1,051	410	336	377	314	367
Wahiawa	270	193	200	191	368	140	103	108	103	146
Waianae	705	466	505	500	556	440	283	248	224	239
Waialua	40	43	45	24	67	18	22	19	9	15
Koolauloa	55	44	51	70	75	31	21	25	37	29
Koolaupoko	363	246	284	368	449	153	108	109	152	154
Unspecified	182	138	192	154	165	79	67	102	64	62
<b>KAUAI COUNTY</b>	<b>267</b>	<b>226</b>	<b>274</b>	<b>316</b>	<b>305</b>	<b>93</b>	<b>87</b>	<b>82</b>	<b>95</b>	<b>96</b>
Lihue	54	47	60	70	60	18	17	19	20	18
Koloa	50	30	34	33	28	17	6	7	6	10
Waimea	32	30	26	52	45	11	2	6	15	8
Hanalei	9	19	15	24	9	2	8	3	13	1
Kawaihau	68	62	76	68	59	26	34	30	19	26
Unspecified	54	38	63	69	104	19	20	17	22	33
<b>MAUI COUNTY</b>	<b>682</b>	<b>405</b>	<b>550</b>	<b>600</b>	<b>800</b>	<b>268</b>	<b>177</b>	<b>226</b>	<b>220</b>	<b>296</b>
Lahaina	68	26	36	44	65	26	11	15	19	24
Wailuku	338	174	178	158	285	140	79	72	60	117
Makawao	134	70	88	133	129	51	36	45	35	50
Hana	2		1	6	2	0	0	0	4	0
Molokai	21	11	31	30	38	9	4	9	19	9
Lanai	5	1	12	25	8	2	1	8	14	7
Unspecified	114	123	204	204	273	40	46	77	69	89
<b>STATE TOTAL</b>	<b>5,207</b>	<b>3,974</b>	<b>4,690</b>	<b>4,628</b>	<b>5,939</b>	<b>2,645</b>	<b>1,928</b>	<b>2,082</b>	<b>1,850</b>	<b>2,174</b>

## CHILD ABUSE AND NEGLECT IN HAWAII, 2005- 2009


### Duplicated Count of Children by Source of Initial Reporter

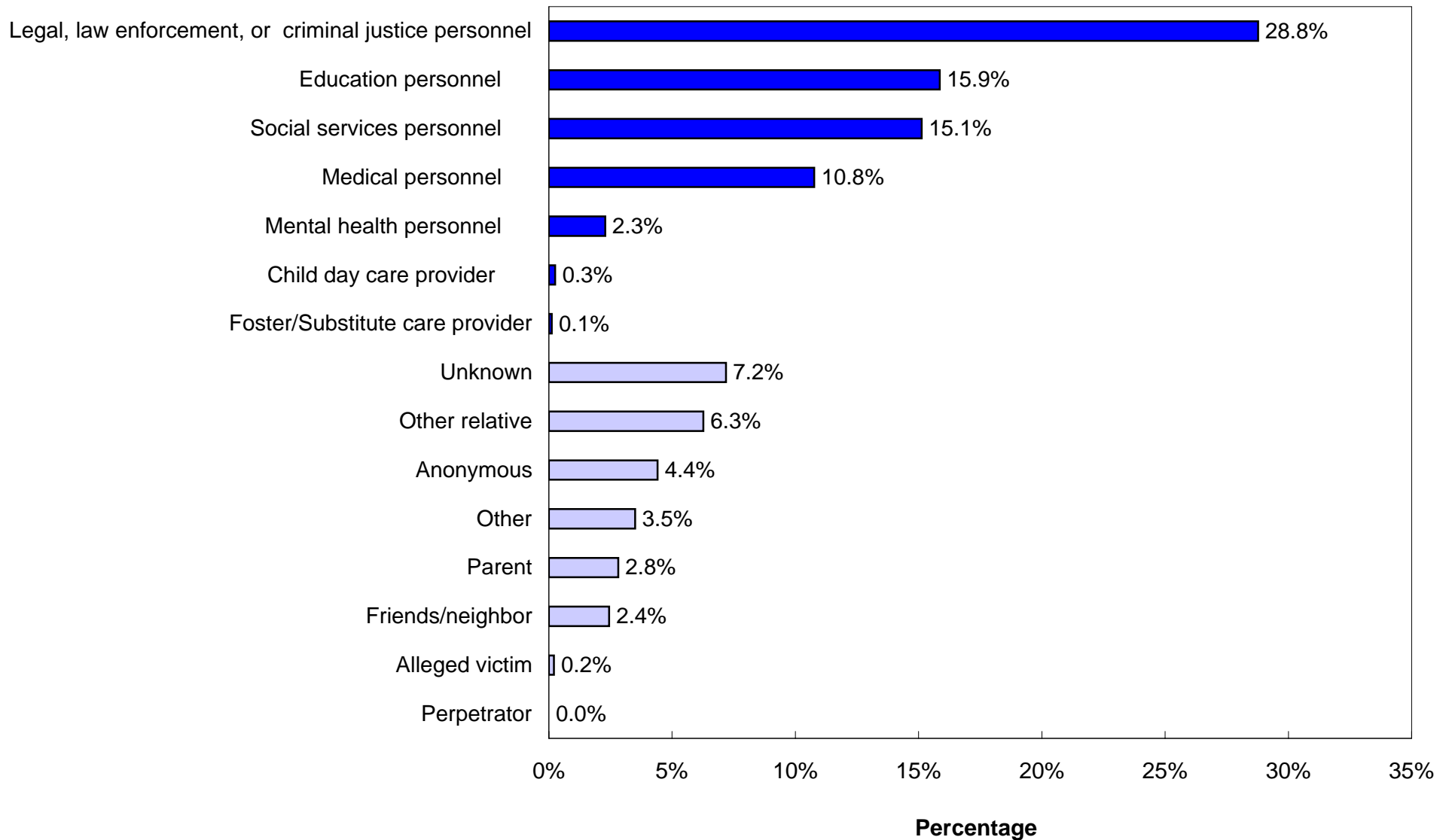
SOURCE	REPORTED					CONFIRMED				
	2005	2006	2007	2008	2009	2005	2006	2007	2008	2009
<b>MANDATED REPORTERS</b>										
Social services personnel	744	419	780	821	898	364	182	359	314	387
Medical personnel	945	748	606	559	639	606	443	355	306	297
Mental health personnel	106	53	93	76	136	41	28	50	25	53
Legal, law enforcement, or criminal justice personnel	1,082	844	965	936	1709	606	492	477	445	695
Education personnel	872	681	921	919	942	377	294	333	326	281
Child day care provider	4	2	6	10	15	0	0	3	3	4
Foster/Substitute care provider	17	12	14	2	7	9	5	11	0	2
<b>Total Mandatory Reporters</b>	<b>3,770</b>	<b>2,759</b>	<b>3,385</b>	<b>3,323</b>	<b>4,346</b>	<b>2,003</b>	<b>1,444</b>	<b>1,588</b>	<b>1,419</b>	<b>1,719</b>
<b>OTHER REPORTERS</b>										
Alleged victim	12	9	21	3	12	4	9	11	2	6
Parent	190	80	124	107	167	82	41	49	22	43
Other relative	369	255	253	276	372	204	120	134	109	122
Friends/neighbor	233	155	133	159	145	81	58	30	51	30
Perpetrator	0	0	0	0	0	0	0	0	0	0
Anonymous	246	152	174	190	262	89	49	40	69	81
Other	243	161	137	140	208	104	65	66	46	61
Unknown	144	403	463	430	427	78	142	164	132	112
<b>Total Other Reporters</b>	<b>1,437</b>	<b>1,215</b>	<b>1,305</b>	<b>1,305</b>	<b>1,593</b>	<b>642</b>	<b>484</b>	<b>494</b>	<b>431</b>	<b>455</b>
<b>STATE TOTAL</b>	<b>5,207</b>	<b>3,974</b>	<b>4,690</b>	<b>4,628</b>	<b>5,939</b>	<b>2,645</b>	<b>1,928</b>	<b>2,082</b>	<b>1,850</b>	<b>2,174</b>

**CHILD ABUSE AND NEGLECT IN HAWAII, 2009**  
**Mandated and Non-Mandated Source of Initial Reporter**

**Sources**

 Mandated Sources

 Non-Mandated Sources



**CHILD ABUSE AND NEGLECT IN HAWAII, 2005-2009  
VICTIM**

**CONFIRMED DUPLICATED COUNT OF CHILDREN**

<b>AGE</b>	<b>2005</b>	<b>2006</b>	<b>2007</b>	<b>2008</b>	<b>2009</b>
Less Than One Year	464	353	316	294	292
1 Year	174	117	148	130	182
2 Years	156	112	139	113	149
3 Years	145	87	126	99	125
4 Years	156	94	118	87	158
5 Years	141	121	105	99	126
6 Years	123	84	95	110	116
7 Years	116	78	103	91	105
8 Years	130	86	107	92	114
9 Years	127	78	93	93	89
10 Years	122	86	82	82	103
11 Years	111	79	84	87	97
12 Years	107	103	102	68	93
13 Years	147	92	101	75	92
14 Years	159	92	105	99	105
15 Years	107	108	100	85	86
16 Years	80	80	97	91	70
17 Years	67	65	53	54	71
Unknown	13	13	8	1	1
Median age	6	6	6	6	6
<b>TOTAL</b>	<b>2,645</b>	<b>1,928</b>	<b>2,082</b>	<b>1,850</b>	<b>2,174</b>
<b>SEX</b>	<b>2005</b>	<b>2006</b>	<b>2007</b>	<b>2008</b>	<b>2009</b>
Male	1,274	945	1,004	899	1,048
Female	1,366	976	1,071	943	1,123
Unknown	5	7	7	8	3
<b>TOTAL</b>	<b>2,645</b>	<b>1,928</b>	<b>2,082</b>	<b>1,850</b>	<b>2,174</b>

**CHILD ABUSE AND NEGLECT IN HAWAII, 2005-2009  
VICTIM**

**CONFIRMED DUPLICATED COUNT OF CHILDREN**

<b>RACE</b>	<b>2005</b>	<b>2006</b>	<b>2007</b>	<b>2008</b>	<b>2009</b>
Hawaiian/Part Hawaiian	1,092	728	641	662	856
Mixed	358	283	345	272	347
White	247	220	228	231	222
Filipino	200	125	148	115	169
Samoaan	90	72	45	100	54
Black	52	40	29	40	45
Japanese	31	34	35	34	17
Korean	6	5	1	6	6
American Indian	20	10	11	6	17
Chinese	10	10	9	6	14
Other Pacific Islander	55	56	66	69	106
Hispanic/Spanish	65	56	55	67	88
Vietnamese	7	7	11	3	3
Laotian	3	3	0	2	3
Cambodian	0	1	1	0	1
Alaskan Native	1	0	0	0	1
Unable to Determine	64	59	97	56	50
Missing	344	219	360	181	175
<b>TOTAL</b>	<b>2,645</b>	<b>1,928</b>	<b>2,082</b>	<b>1,850</b>	<b>2,174</b>

<b>SEVERITY OF HARM</b>	<b>2005</b>	<b>2006</b>	<b>2007</b>	<b>2008</b>	<b>2009</b>
Fatal	2	5	2	1	5
No treatment necessary	1,481	1,020	949	828	959
Treatment required	282	217	284	212	178
Serious	96	90	53	51	44
Permanent disability	2	0	0	1	3
No injury	782	596	794	757	985
<b>TOTAL</b>	<b>2,645</b>	<b>1,928</b>	<b>2,082</b>	<b>1,850</b>	<b>2,174</b>

## CHILD ABUSE AND NEGLECT IN HAWAII, 2009 VICTIM

### CONFIRMED UNDUPLICATED COUNT OF CHILDREN\*: AGE, SEX, RACE, SEVERITY

AGE	Number	Percent	RACE	Number	Percent
Less Than One Year	284	13.5	MISSING	175	8.3
1 Year	176	8.4	American Indian	17	0.8
2 Years	144	6.9	Alaskan Native	1	0.1
3 Years	120	5.7	Black	45	2.1
4 Years	152	7.2	Cambodian	1	0.1
5 Years	123	5.9	Chinese	14	0.7
6 Years	113	5.4	Filipino	168	8.0
7 Years	100	4.8	Hawaiian/Part Hawaiian	812	38.6
8 Years	110	5.2	Hispanic/Spanish	85	4.0
9 Years	88	4.2	Japanese	15	0.7
10 Years	101	4.8	Korean	6	0.3
11 Years	90	4.3	Laotian	3	0.1
12 Years	90	4.3	Mixed	337	16.0
13 Years	90	4.3	Other pacific islander	103	4.9
14 Years	100	4.8	Samoan	53	2.5
15 Years	82	3.9	Unable to determine	50	2.4
16 Years	69	3.3	Vietnamese	3	14.0%
17 Years	69	3.3	White	214	10.2
Unknown	1	0.1			
<b>TOTAL</b>	<b>2,102</b>	<b>100.0</b>	<b>TOTAL</b>	<b>2,102</b>	<b>100.0</b>

SEX	Number	Percent	SEVERITY OF HARM	Number	Percent
Male	1013	48.2	No treatment necessary	927	44.1
Female	1086	51.7	Treatment required	168	8.0
Unknown or missing	3	0.1	Serious	43	2.1
			Permanent disability	3	0.1
			Fatal	5	0.2
			No injury	956	45.5
<b>TOTAL</b>	<b>2,102</b>	<b>100</b>	<b>TOTAL</b>	<b>2,102</b>	<b>100.0</b>

\*A child is only counted once, regardless of how many times he/she was reported.

The highest severity level was selected for a child with more than one confirmed severity.

**CHILD ABUSE AND NEGLECT IN HAWAII, 2009**  
**Recurrence\***

	Frequency	Percent
<b>No Recurrence**</b>	1,069	97.18
<b>Recurrence***</b>	31	2.82
<b>Total</b>	<b>1,100</b>	<b>100.0</b>

\*Only confirmed child victims, whose report year and disposition year were both in 2009 and the initial maltreatment report date fell between January-June, 2009, were included in the recurrence rate calculation.

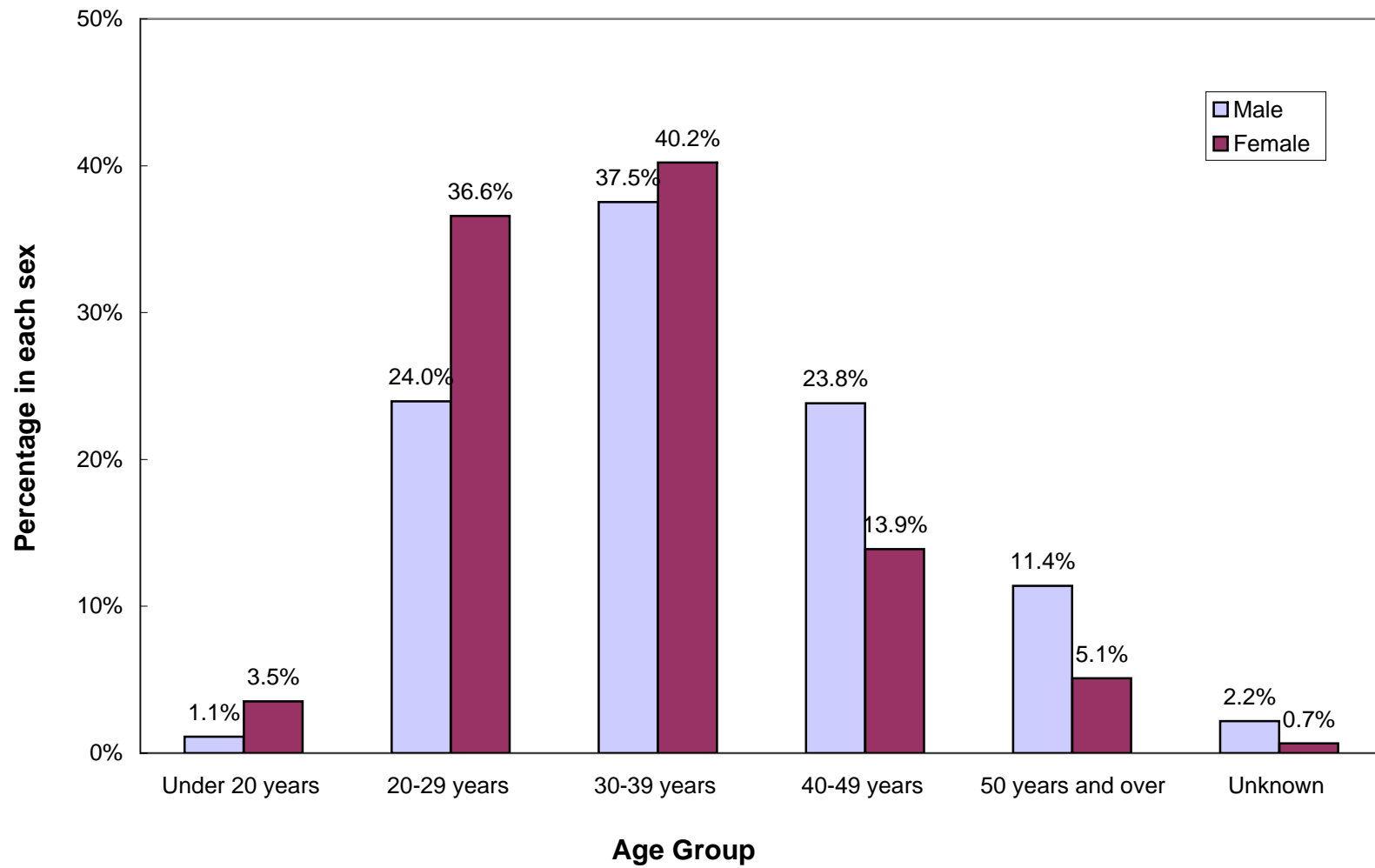
\*\*Maltreatment occurred between January and June. There was no recurrence within six months.

\*\*\*First maltreatment occurred between January and June. The second maltreatment occurred within six months.



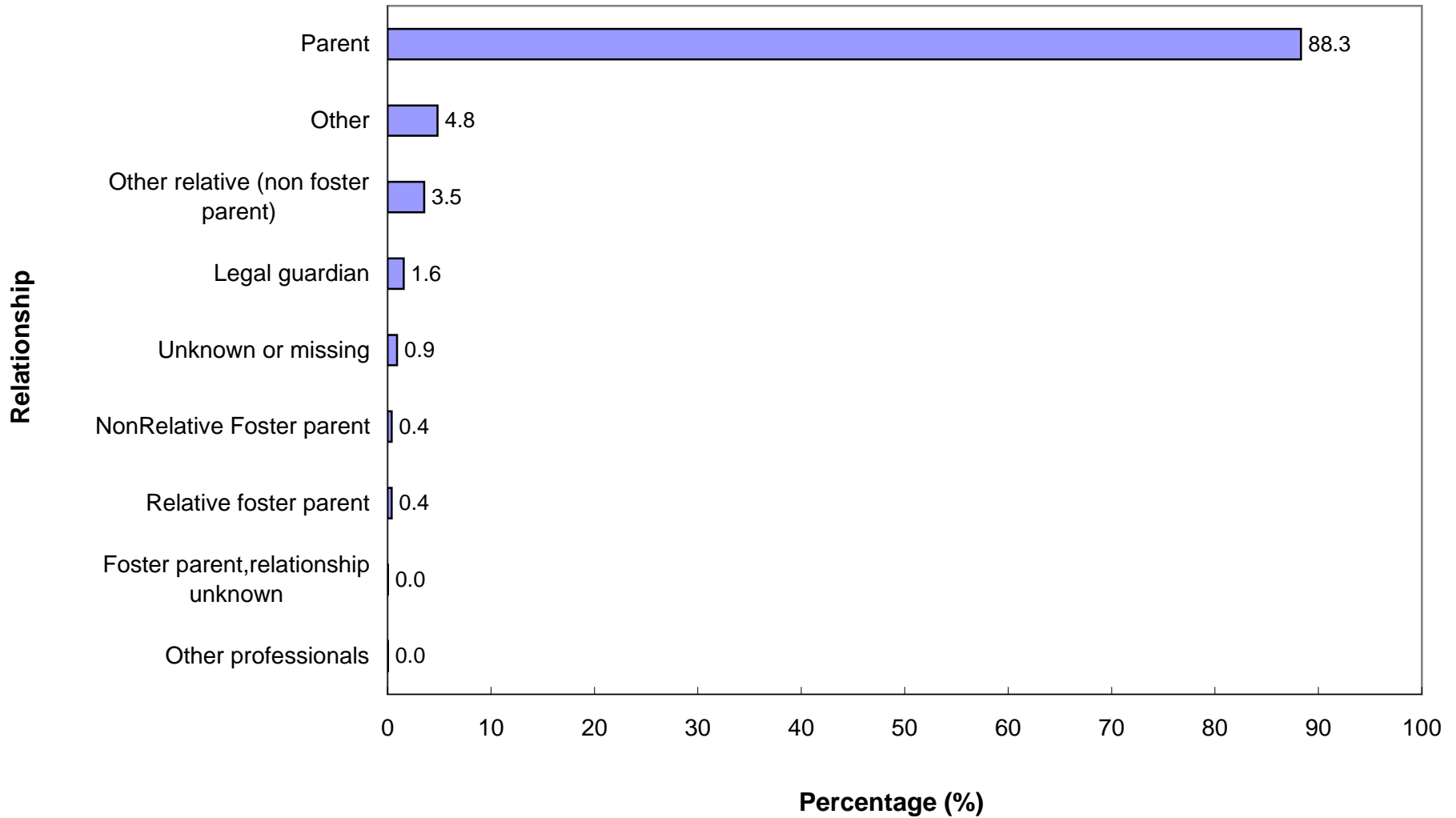
# CHILD ABUSE AND NEGLECT IN HAWAII, 2009

## Duplicated Count of Perpetrators: Age Group by Sex



# CHILD ABUSE AND NEGLECT IN HAWAII, 2009

## Relationship of Perpetrator to Confirmed Victim



## CHILD ABUSE AND NEGLECT IN HAWAII, 2009

### UNDUPLICATED PERPETRATORS FOR CONFIRMED VICTIMS\*

<b>AGE</b>	<b>Number</b>	<b>Percent</b>
Under 20 years	68	4.0
20-29 years	569	33.7
30-39 years	576	34.1
40-49 years	308	18.2
50 years and over	134	7.9
Unknown	34	2.0
<b>TOTAL</b>	<b>1,689</b>	<b>100.0</b>

<b>SEX</b>	<b>Number</b>	<b>Percent</b>
Male	753	44.6
Female	930	55.1
Unknown or missing	6	0.4
<b>TOTAL</b>	<b>1,689</b>	<b>100.0</b>

\* A perpetrator was counted only once regardless of how many times he/she was associated with a child victim.

**CHILD ABUSE AND NEGLECT IN HAWAII, 2005-2009**  
**PERPETRATORS OF CONFIRMED VICTIMS**  
**Duplicated Count of Perpetrators\***

<b>RELATIONSHIP TO VICTIM</b>	<b>2005</b>	<b>2006</b>	<b>2007</b>	<b>2008</b>	<b>2009</b>
Parent	3,417	2,588	2,752	2,531	2,922
Other relative	176	83	94	87	117
Relative foster parent	58	6	7	4	13
NonRelative Foster parent	21	26	18	18	13
Group home/Residential facility staff	2	3	2	0	0
Legal guardian	102	56	46	41	52
Other professionals					1
Foster parent, relationship unspecified		2	0	0	1
Other	210	151	157	110	160
Unknown/missing	37	16	10	19	30
<b>TOTAL</b>	<b>4,023</b>	<b>2,931</b>	<b>3,086</b>	<b>2,810</b>	<b>3,309</b>

<b>PERPETRATOR AGE</b>	<b>2005</b>	<b>2006</b>	<b>2007</b>	<b>2008</b>	<b>2009</b>
Under 20 Years	131	66	69	79	80
20 - 29 Years	1,336	921	947	908	1,015
30 - 39 Years	1,478	1,111	1,200	1,068	1,286
40 - 49 Years	732	521	503	480	615
50 Years or Older	262	236	232	172	263
Unknown	84	76	135	103	50
<b>TOTAL</b>	<b>4,023</b>	<b>2,931</b>	<b>3,086</b>	<b>2,810</b>	<b>3,309</b>

<b>PERPETRATOR SEX</b>	<b>2005</b>	<b>2006</b>	<b>2007</b>	<b>2008</b>	<b>2009</b>
Male	1,698	1,263	1,381	1,249	1511
Female	2,316	1,647	1,692	1,540	1785
Unknown	9	21	13	21	13
<b>TOTAL</b>	<b>4,023</b>	<b>2,931</b>	<b>3,086</b>	<b>2,810</b>	<b>3,309</b>

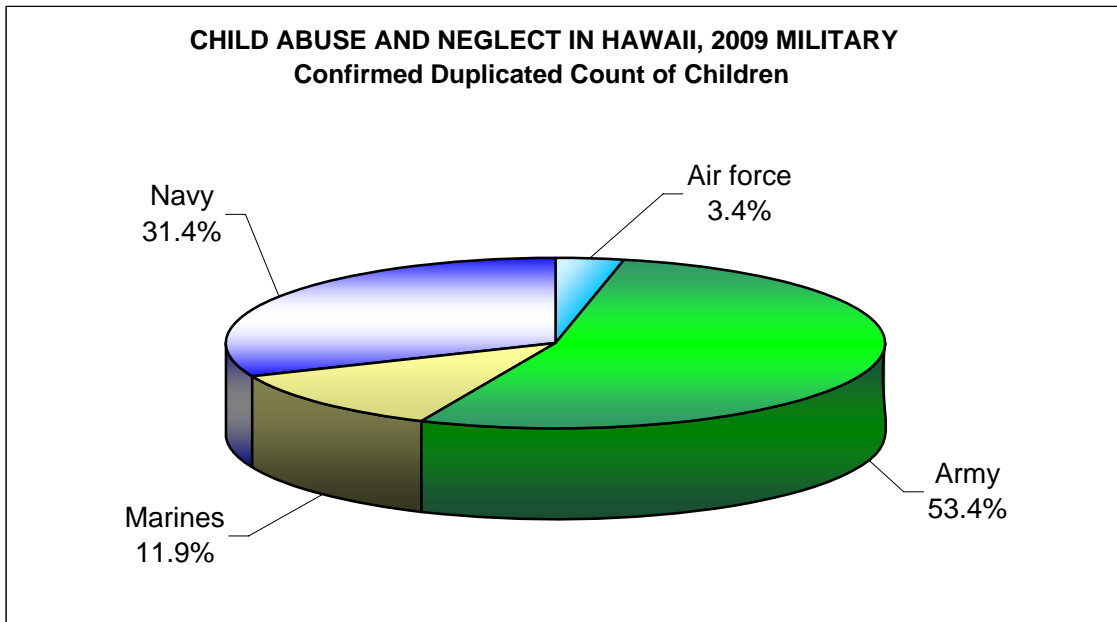
\*A perpetrator was counted each time that he/she was associated with a child victim, therefore one perpetrator may have been counted more than once. For example, if an intake had 2 confirmed victims and 2 perpetrators, then the count of perpetrators would be 4.

## CHILD ABUSE AND NEGLECT IN HAWAII, 2005-2009 MILITARY

### DUPLICATED COUNT OF CHILDREN

Military Branch	REPORTED					CONFIRMED				
	2005	2006	2007	2008	2009	2005	2006	2007	2008	2009
Air force	7	15	5	6	15	5	5	2	1	4
Army	106	93	123	141	201	58	46	59	66	63
Coast Guard	6	5	3	0	6	2	2	2	0	0
Marines	24	22	19	32	37	6	7	3	18	14
Navy	61	52	26	44	70	26	26	11	21	37
<b>State Total</b>	<b>204</b>	<b>187</b>	<b>176</b>	<b>223</b>	<b>329</b>	<b>97</b>	<b>86</b>	<b>77</b>	<b>106</b>	<b>118</b>

Military Rank	2005	2006	2007	2008	2009	2005	2006	2007	2008	2009
Unspecified	97	73	43	51	113	49	32	21	18	35
Enlisted	95	100	123	157	193	42	53	52	80	77
Non-Commissioned	11	7	5	14	19	5	1	4	8	6
Officer	1	7	5	1	4	1	0	0	0	0
<b>State Total</b>	<b>204</b>	<b>187</b>	<b>176</b>	<b>223</b>	<b>329</b>	<b>97</b>	<b>86</b>	<b>77</b>	<b>106</b>	<b>118</b>



**CHILD ABUSE AND NEGLECT IN HAWAII, 2009  
MILITARY**

**ABUSE AND NEGLECT TYPES PER CHILD**

<b>Total Reported</b>	<b>DUPLICATED COUNT OF TYPES*</b>					<b>UNDUPLICATED COUNT OF TYPES**</b>				
	<b>HAWAII</b>	<b>OAHU</b>	<b>KAUAI</b>	<b>MAUI</b>	<b>TOTAL</b>	<b>HAWAII</b>	<b>OAHU</b>	<b>KAUAI</b>	<b>MAUI</b>	<b>TOTAL</b>
Physical Abuse	0	64	0	0	64	0	63	0	0	63
Neglect	0	83	0	0	83	0	83	0	0	83
Medical Neglect	0	6	0	0	6	0	6	0	0	6
Sexual Abuse	0	16	0	0	16	0	16	0	0	16
Psychological Abuse	0	3	0	0	3	0	2	0	0	2
Threatened Harm	0	309	0	0	309	1	305	0	1	305
<b>Total</b>	<b>0</b>	<b>481</b>	<b>0</b>	<b>0</b>	<b>481</b>	<b>1</b>	<b>475</b>	<b>0</b>	<b>1</b>	<b>475</b>

**Confirmed**

Physical Abuse	0	14	0	0	14	0	14	0	0	14
Neglect	0	24	0	0	24	0	24	0	0	24
Medical Neglect	0	1	0	0	1	0	1	0	0	1
Sexual Abuse	0	6	0	0	6	0	6	0	0	6
Psychological Abuse	0	0	0	0	0	0	0	0	0	0
Threatened Harm	0	104	0	0	104	0	104	0	0	104
<b>Total</b>	<b>0</b>	<b>149</b>	<b>0</b>	<b>0</b>	<b>149</b>	<b>0</b>	<b>149</b>	<b>0</b>	<b>0</b>	<b>149</b>

**Confirmation Rate by Type**

Physical Abuse	0%	22%	0%	0%	22%	0%	22%	0%	0%	22%
Neglect	0%	29%	0%	0%	29%	0%	29%	0%	0%	29%
Medical Neglect	0%	17%	0%	0%	17%	0%	17%	0%	0%	17%
Sexual Abuse	0%	38%	0%	0%	38%	0%	38%	0%	0%	38%
Psychological Abuse	0%	0%	0%	0%	0%	0%	0%	0%	0%	0%
Threatened Harm	0%	34%	0%	0%	34%	0%	34%	0%	0%	34%
<b>Total</b>	<b>0%</b>	<b>31%</b>	<b>0%</b>	<b>0%</b>	<b>31%</b>	<b>0%</b>	<b>31%</b>	<b>0%</b>	<b>0%</b>	<b>31%</b>

\* A child may have more than one type of abuse/neglect per report and may have been reported more than once within the reporting period. Therefore, the sum of the abuse/neglect types exceeds the count of children.

\*\* A child may have more than one type of abuse/neglect per report and may have been reported more than once within the reporting period, but the same maltreatment was counted only once. Therefore, the sum of the abuse/neglect types exceeds the count of children.

**CHILD ABUSE AND NEGLECT IN HAWAII, 2005- 2009**  
**MILITARY**  
**Duplicated Count of Children by Source of Initial Reporter**

SOURCE	REPORTED					CONFIRMED				
	2005	2006	2007	2008	2009	2005	2006	2007	2008	2009
<b>MANDATED REPORTERS</b>										
Social services personnel	20	20	14	46	61	14	13	5	16	24
Medical personnel	47	46	33	33	36	22	19	13	19	13
Mental health personnel	4	1	15	0	7	4	0	10	0	5
Legal, law enforcement, or criminal justice personnel	58	55	44	75	99	33	30	22	44	32
Education personnel	14	15	25	36	48	2	8	7	8	17
Child day care provider	2	1	0	4	2	0	0	0	2	2
Substitute/Foster care provider	0	0	0	0	0	0	0	0	0	0
<b>Total Mandatory Reporters</b>	<b>145</b>	<b>138</b>	<b>131</b>	<b>194</b>	<b>253</b>	<b>75</b>	<b>70</b>	<b>57</b>	<b>89</b>	<b>93</b>
<b>OTHER REPORTERS</b>										
Alleged victim	0	0	0	0	0	0	0	0	0	0
Parent	10	2	3	1	7	5	1	1	0	1
Other relative	5	7	6	4	7	5	2	4	2	4
Friends/neighbor	20	13	10	9	12	4	2	5	6	6
Perpetrator	0	0	0	0		0	0	0	0	
Anonymous	6	6	3	5	30	0	4	0	5	11
Other	10	2	7	3	6	2	1	4	0	2
Unknown	8	19	16	7	14	6	6	6	4	1
<b>Total Other Reporters</b>	<b>59</b>	<b>49</b>	<b>45</b>	<b>29</b>	<b>76</b>	<b>22</b>	<b>16</b>	<b>20</b>	<b>17</b>	<b>25</b>
<b>STATE TOTAL</b>	<b>204</b>	<b>187</b>	<b>176</b>	<b>223</b>	<b>329</b>	<b>97</b>	<b>86</b>	<b>77</b>	<b>106</b>	<b>118</b>

**CHILD ABUSE AND NEGLECT IN HAWAII, 2005-2009**  
**MILITARY**

**CONFIRMED DUPLICATED COUNT OF CHILDREN: AGE AND SEX**

<b>AGE</b>	<b>2005</b>	<b>2006</b>	<b>2007</b>	<b>2008</b>	<b>2009</b>
Less Than One Year	22	19	14	24	16
1 Year	14	7	8	6	15
2 Years	12	9	5	15	9
3 Years	4	5	4	9	5
4 Years	4	6	7	9	12
5 Years	10	6	5	6	10
6 Years	4	6	4	4	3
7 Years	6	3	5	8	6
8 Years	2	4	4	4	5
9 Years	5	3	4	5	5
10 Years	3	3	1	2	3
11 Years	2	1	3	3	6
12 Years	4	2	3	3	4
13 Years	0	3	4	2	6
14 Years	1	1	2	1	3
15 Years	0	1	3	3	3
16 Years	0	1	1	1	3
17 Years	2	3	0	1	4
Unspecified	2	3	0	0	0
	<b>97</b>	<b>86</b>	<b>77</b>	<b>106</b>	<b>118</b>
<b>SEX</b>	<b>2005</b>	<b>2006</b>	<b>2007</b>	<b>2008</b>	<b>2009</b>
Male	50	42	42	42	50
Female	46	44	35	60	68
Unspecified	1	0	0	4	0
<b>STATE TOTAL</b>	<b>97</b>	<b>86</b>	<b>77</b>	<b>106</b>	<b>118</b>



**CHILD ABUSE AND NEGLECT IN HAWAII, 2005-2009**  
**MILITARY**

**CONFIRMED DUPLICATED COUNT OF CHILDREN: RACE AND SEVERITY**

<b>RACE</b>	<b>2005</b>	<b>2006</b>	<b>2007</b>	<b>2008</b>	<b>2009</b>
White	29	30	20	49	48
Black	24	12	6	13	23
Mixed	16	6	28	15	26
Filipino	4	3	0	1	0
Hawaiian/Part Hawaiian	10	10	6	6	1
Japanese	0	0	0	1	0
Mexican	0	0	0	0	0
Korean	0	0	0	0	0
Cambodian	0	0	0	0	0
Chinese	0	0	0	0	0
Puerto Rican	0	0	0	0	0
Other pacific islander	0	1	1	0	0
Samoan	0	1	0	0	0
Vietnamese	0	0	0	0	0
American Indian	0	1	3	4	4
Hispanic/Spanish	3	10	6	8	12
Other	0	0	0	0	0
Unable to determine	0	4	0	2	0
Unknown	11	8	7	7	4
<b>STATE TOTAL</b>	<b>97</b>	<b>86</b>	<b>77</b>	<b>106</b>	<b>118</b>

<b>SEVERITY</b>	<b>2005</b>	<b>2006</b>	<b>2007</b>	<b>2008</b>	<b>2009</b>
Fatal	0	1	0	0	2
Permanent Disability	0	0	0	0	0
Serious	5	1	0	2	0
Treatment	9	4	18	15	9
No Treatment	60	47	29	55	51
No Injury	23	33	30	34	56
Unspecified	0	0	0	0	0
<b>STATE TOTAL</b>	<b>97</b>	<b>86</b>	<b>77</b>	<b>106</b>	<b>118</b>