

A Statistical Report on

**CHILD ABUSE AND NEGLECT
IN HAWAII**

2007

Prepared by

**State of Hawaii
Department of Human Services
Management Services Office**

TABLE OF CONTENTS

LIST OF TABLES

Summary	1
Duplicated Count of Children by County: Reported and Confirmed, 2003 - 2007	4
Abuse and Neglect Types By County, Duplicated Count of Types for Each Child	5
Abuse and Neglect Types By County, Unduplicated Count of Types for Each Child	6
Unduplicated Count of Children by County District	7
Duplicated Count of Children by County Districts, 2003 - 2007	8
Duplicated Count of Children by Source of Initial Reporter, 2003 - 2007	9
Age of Confirmed Duplicated Count of Children, 2003 - 2007	11
Sex of Confirmed Duplicated Count of Children, 2003 - 2007	11
Race of Confirmed Duplicated Count of Children, 2003 - 2007	12
Severity of Harm of Confirmed Duplicated Count of Children, 2003 - 2007	12
Age, Sex, and Race of Confirmed Unduplicated Children	13
Recurrence Rate	14
Perpetrators of Confirmed Victims: Age and Sex	17
Perpetrator Relationship to Victim, 2003 - 2007	18
Age of Perpetrator, 2003 - 2007	18
Sex of Perpetrator, 2003 - 2007	18

LIST OF FIGURES

Duplicated Count of Children, 2003 - 2007	2
Percentage of Duplicated Count of Children by County	3
Duplicated Count of Children by County: Reported and Confirmed, 2003 - 2007	4
Duplicated Count of Children by Source of Initial Reporter	10
Age and Sex of Perpetrators of Confirmed Duplicated Count of Children	15
Perpetrator Relationship to Victim	16

MILITARY

Duplicated Count of Children by Military Branch and Rank, 2003 - 2007	19
Abuse and Neglect Types, Duplicated and Unduplicated Count of Types	20
Duplicated Count of Children by Source of Initial Reporter, 2003 - 2007	21
Age of Confirmed Duplicated Count of Children, 2003 - 2007	22
Sex of Confirmed Duplicated Count of Children, 2003 - 2007	22
Race of Confirmed Duplicated Count of Children, 2003 - 2007	23
Severity of Harm of Confirmed Duplicated Count of Children, 2003 - 2007	23

CHILD ABUSE AND NEGLECT IN HAWAII, 2007 SUMMARY

	HAWAII	OAHU	KAUAI	MAUI	TOTAL
INTAKES					
Confirmed	240	743	55	140	1,178
Not Confirmed	310	783	104	178	1,375
Total Reported	550	1,526	159	318	2,553
Percent Confirmed	44%	49%	35%	44%	46%
DUPLICATED COUNT OF CHILDREN					
Confirmed	450	1,324	82	226	2,082
Not Confirmed	590	1,502	192	324	2,608
Total Reported	1,040	2,826	274	550	4,690
Percent Confirmed	43%	47%	30%	41%	44%
UNDUPLICATED COUNT OF CHILDREN					
Confirmed	429	1,302	81	220	2,032
Not Confirmed	546	1,419	177	301	2,443
Total Reported	975	2,721	258	521	4,475
Percent Confirmed	44%	48%	31%	42%	45%

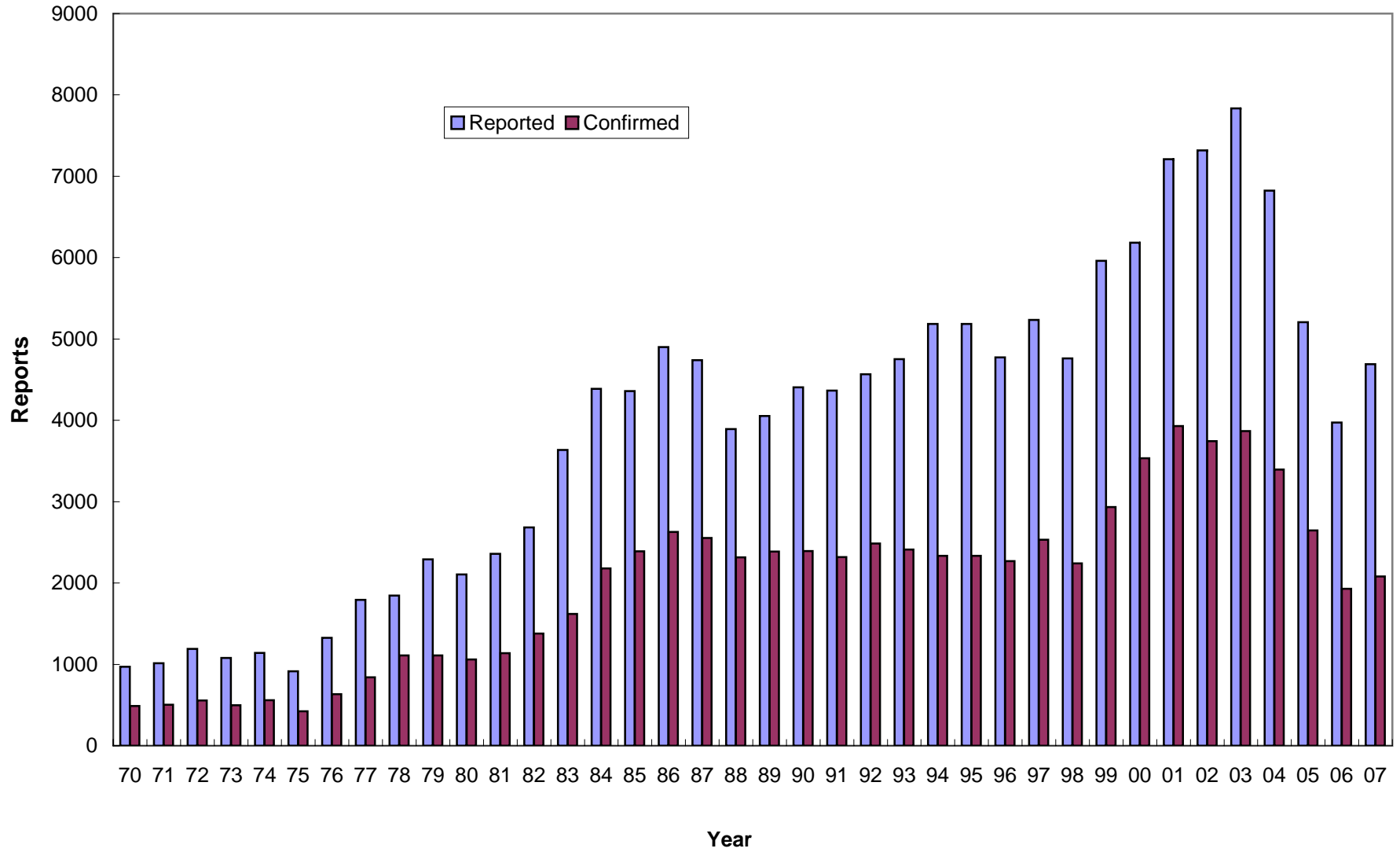
Intakes: reports accepted for investigation.

Duplicated count: counted by reports, a child is counted each time that he/she was found to be a victim.

Unduplicated count: counted by child, a child is counted only once during the reporting period, regardless of how many times the child was reported.

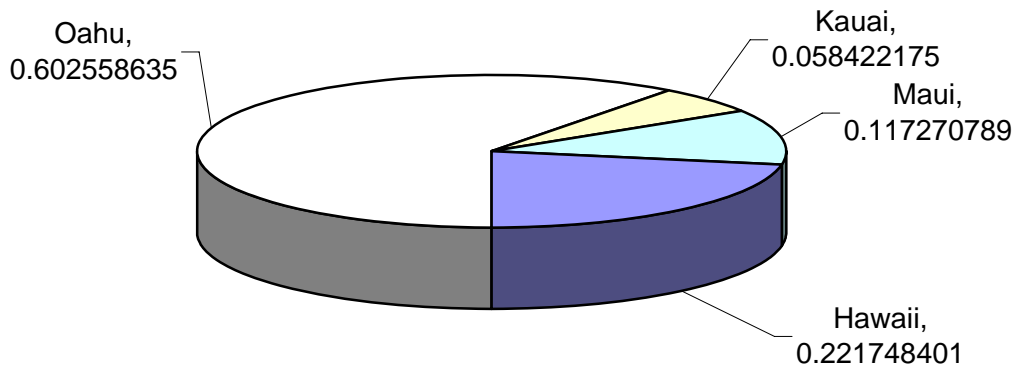
Note: In this report, data from 1999 and before were based on report date, data from 2000 and after were based on disposition date.

CHILD ABUSE AND NEGLECT IN HAWAII, 1970-2007
Duplicated Count of Children

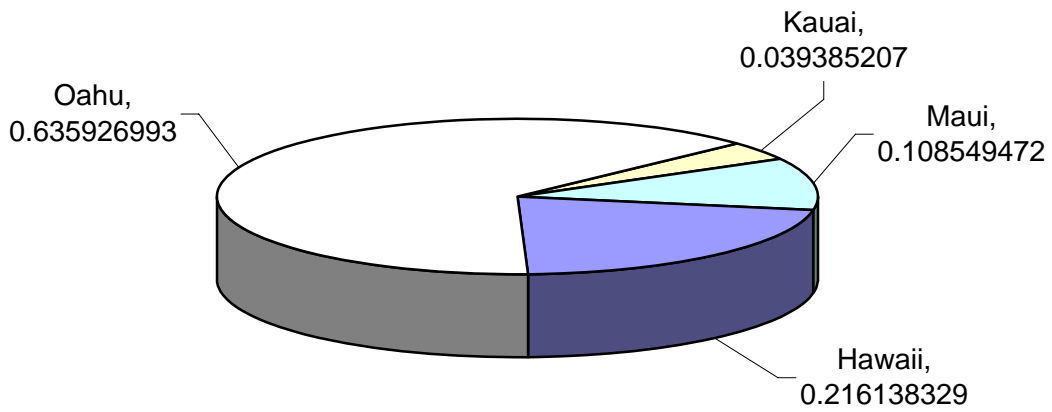


CHILD ABUSE AND NEGLECT IN HAWAII, 2007

Total Count of Children



Total Count of Children

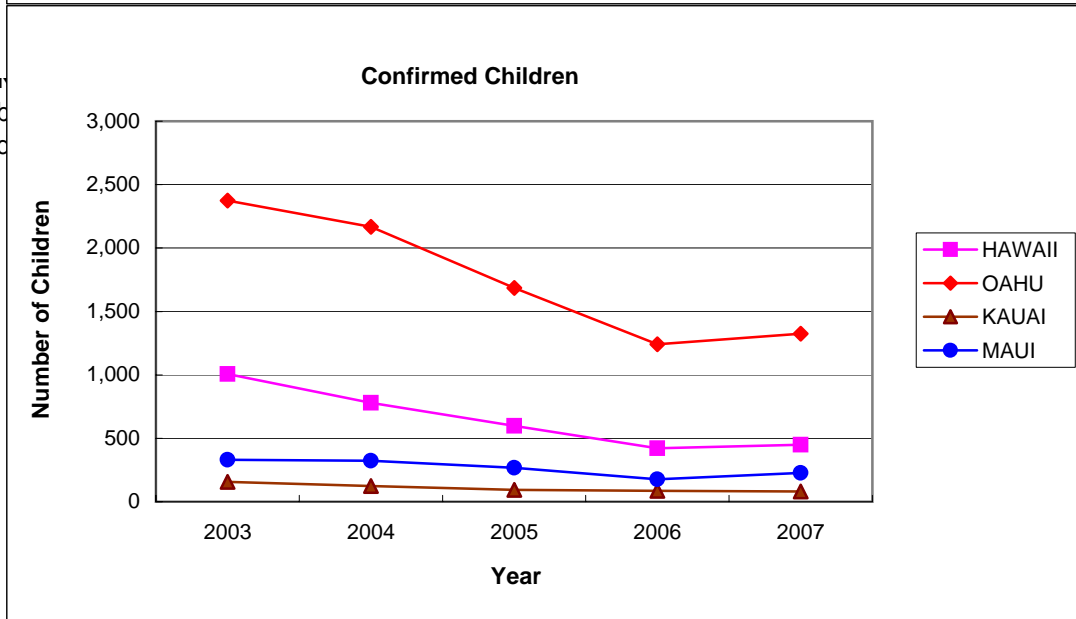
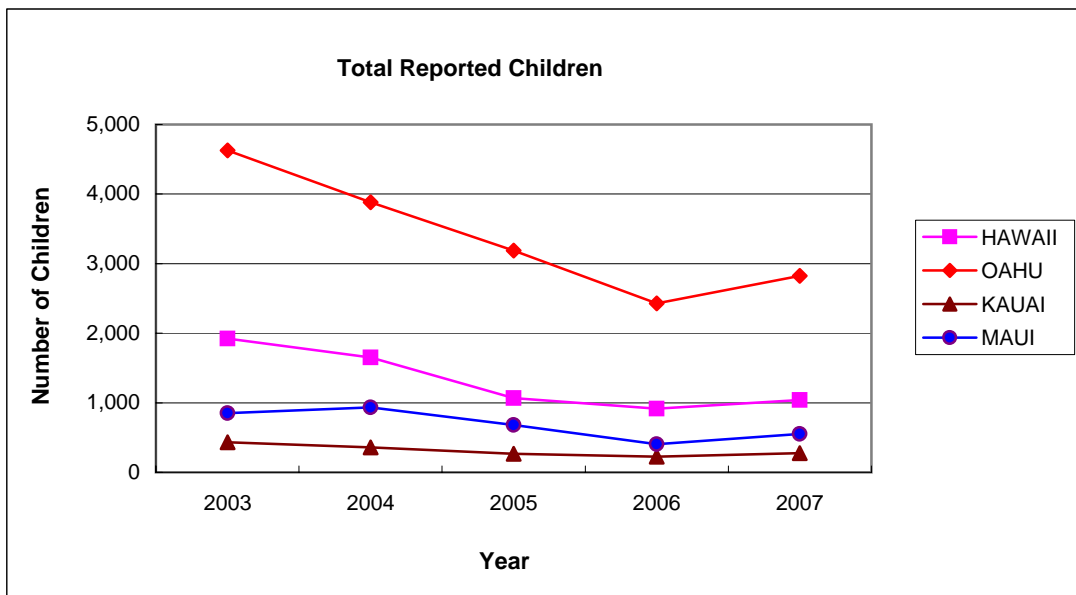


Count of Confirmed Children

CHILD ABUSE AND NEGLECT IN HAWAII, 2003-2007

Duplicated Count of Children by County

DISTRICT	REPORTED					CONFIRMED				
	2003	2004	2005	2006	2007	2003	2004	2005	2006	2007
HAWAII	1,924	1,653	1,069	914	1,040	1,006	780	598	422	450
OAHU	4,628	3,880	3,189	2,429	2,826	2,375	2,168	1,686	1,242	1,324
KAUAI	434	357	267	226	274	157	124	93	87	82
MAUI	849	933	682	405	550	330	324	268	177	226
STATE	7,835	6,823	5,207	3,974	4,690	3,868	3,396	2,645	1,928	2,082



CHILD ABUSE AND NEGLECT IN HAWAII, 2007

ABUSE AND NEGLECT TYPES BY COUNTY

DUPLICATED COUNT OF TYPES FOR EACH CHILD*

Total Reported:	HAWAII	OAHU	KAUAI	MAUI	Total
Physical Abuse	193	539	53	88	873
Neglect	181	506	41	110	838
Medical Neglect	20	43	6	6	75
Sexual Abuse	67	198	21	41	327
Psychological Abuse	17	47	6	7	77
Threatened Harm	974	2,642	261	517	4,394
Total	1,452	3,975	388	769	6,584

Confirmed:

Physical Abuse	40	156	19	13	228
Neglect	46	164	17	30	257
Medical Neglect	11	24	3	2	40
Sexual Abuse	19	81	3	17	120
Psychological Abuse	2	16	2	2	22
Threatened Harm	416	1,226	74	206	1,922
Total	534	1,667	118	270	2,589

Confirmation Rate by Type

Physical Abuse	21%	29%	36%	15%	26%
Neglect	25%	32%	41%	27%	31%
Medical Neglect	55%	56%	50%	33%	53%
Sexual Abuse	28%	41%	14%	41%	37%
Psychological Abuse	12%	34%	33%	29%	29%
Threatened Harm	43%	46%	28%	40%	44%
Total	37%	42%	30%	35%	39%

* A child may have more than one type of abuse/neglect per report and may have been reported more than once within the reporting period. Therefore, the sum of the abuse/neglect types exceeds the count of children.

CHILD ABUSE AND NEGLECT IN HAWAII, 2007

ABUSE AND NEGLECT TYPES BY COUNTY

UNDUPLICATED COUNT OF TYPES FOR EACH CHILD*

Total Reported:

	HAWAII	OAHU	KAUAI	MAUI	Total
Physical Abuse	186	535	53	85	859
Neglect	179	493	40	110	822
Medical Neglect	20	43	6	6	75
Sexual Abuse	67	195	21	41	324
Psychological Abuse	17	47	6	7	77
Threatened Harm	920	2,550	247	489	4,206
Total	1,389	3,863	373	738	6,363

Confirmed:

Physical Abuse	40	156	19	13	228
Neglect	45	163	17	30	255
Medical Neglect	11	24	3	2	40
Sexual Abuse	19	81	3	17	120
Psychological Abuse	2	16	2	2	22
Threatened Harm	398	1,205	73	200	1,876
Total	515	1,645	117	264	2,541

Confirmation Rate by Type

Physical Abuse	22%	29%	36%	15%	27%
Neglect	25%	33%	43%	27%	31%
Medical Neglect	55%	56%	50%	33%	53%
Sexual Abuse	28%	42%	14%	41%	37%
Psychological Abuse	12%	34%	33%	29%	29%
Threatened Harm	43%	47%	30%	41%	45%
Total	37%	43%	31%	36%	40%

* A child may have more than one type of abuse/neglect per report and may have been reported more than once within the reporting period, but the same maltreatment was counted only once . Therefore, the sum of the abuse/neglect types exceeds the count of children.

CHILD ABUSE AND NEGLECT IN HAWAII, 2007

NUMBER OF UNDUPLICATED CHILDREN BY DISTRICT

	CONFIRMED	NOT CONFIRMED	TOTAL
HAWAII			
N. Hilo	1	2	3
S. Hilo	63	88	151
Puna	45	124	169
Kau	25	6	31
S. Kona	12	3	15
N. Kona	17	24	41
S. Kohala	25	16	41
N. Kohala	3	4	7
Hamakua	2	5	7
Unspecified	236	274	510
Total	429	546	975
OAHU			
Honolulu	332	376	708
Ewa	376	401	777
Wahiawa	102	87	189
Waianae	242	250	492
Waialua	19	26	45
Koolauloa	24	26	50
Koolaupoko	108	165	273
Unspecified	99	88	187
Total	1,302	1,419	2,721
KAUAI			
Lihue	19	39	58
Koloa	7	27	34
Waimea	6	19	25
Hanalei	3	11	14
Kawaihau	29	39	68
Unspecified	17	42	59
Total	81	177	258
MAUI			
Lahaina	15	20	35
Wailuku	72	94	166
Makawao	40	38	78
Hana	0	1	1
Molokai	9	21	30
Lanai	8	4	12
Unspecified	76	123	199
Total	220	301	521
STATE TOTAL	2,032	2,443	4,475

CHILD ABUSE AND NEGLECT IN HAWAII, 2003-2007

Duplicated Count of Children by County District

DISTRICT	REPORTED					CONFIRMED				
	2003	2004	2005	2006	2007	2003	2004	2005	2006	2007
HAWAII COUNTY	1,924	1,653	1,069	914	1,040	1,006	780	598	422	450
N. Hilo	8	20	9	4	3	4	7	0	0	1
S. Hilo	564	473	197	157	167	252	160	121	86	67
Puna	594	525	247	181	177	242	216	129	79	45
Kau	40	51	36	26	32	21	30	20	21	25
S. Kona	112	42	28	25	16	79	23	17	8	12
N. Kona	154	134	90	45	41	111	89	53	23	17
S. Kohala	95	78	59	42	44	61	54	36	15	26
N. Kohala	43	34	14	16	7	29	23	8	4	3
Hamakua	52	55	9	14	7	9	12	4	3	2
Unspecified	262	241	380	404	546	198	166	210	183	252
OAHU	4,628	3,880	3,189	2,429	2,826	2,375	2,168	1,686	1,242	1,324
Honolulu	1084	959	815	634	740	549	530	415	302	336
Ewa	975	719	759	665	809	510	391	410	336	377
Wahiawa	276	151	270	193	200	128	83	140	103	108
Waianae	660	801	705	466	505	399	472	440	283	248
Waialua	56	39	40	43	45	22	21	18	22	19
Koolauloa	72	34	55	44	51	37	20	31	21	25
Koolaupoko	498	384	363	246	284	213	211	153	108	109
Unspecified	1007	793	182	138	192	517	440	79	67	102
KAUAI COUNTY	434	357	267	226	274	157	124	93	87	82
Lihue	95	68	54	47	60	38	20	18	17	19
Koloa	79	58	50	30	34	21	14	17	6	7
Waimea	55	53	32	30	26	6	17	11	2	6
Hanalei	48	33	9	19	15	23	11	2	8	3
Kawaihau	150	128	68	62	76	66	53	26	34	30
Unspecified	7	17	54	38	63	3	9	19	20	17
MAUI COUNTY	849	933	682	405	550	330	324	268	177	226
Lahaina	55	109	68	26	36	22	35	26	11	15
Wailuku	423	447	338	174	178	151	174	140	79	72
Makawao	204	194	134	70	88	65	60	51	36	45
Hana	14	20	2		1	8	2	0	0	0
Molokai	89	40	21	11	31	56	14	9	4	9
Lanai	17	14	5	1	12	17	6	2	1	8
Unspecified	47	109	114	123	204	11	33	40	46	77
STATE TOTAL	7,835	6,823	5,207	3,974	4,690	3,868	3,396	2,645	1,928	2,082

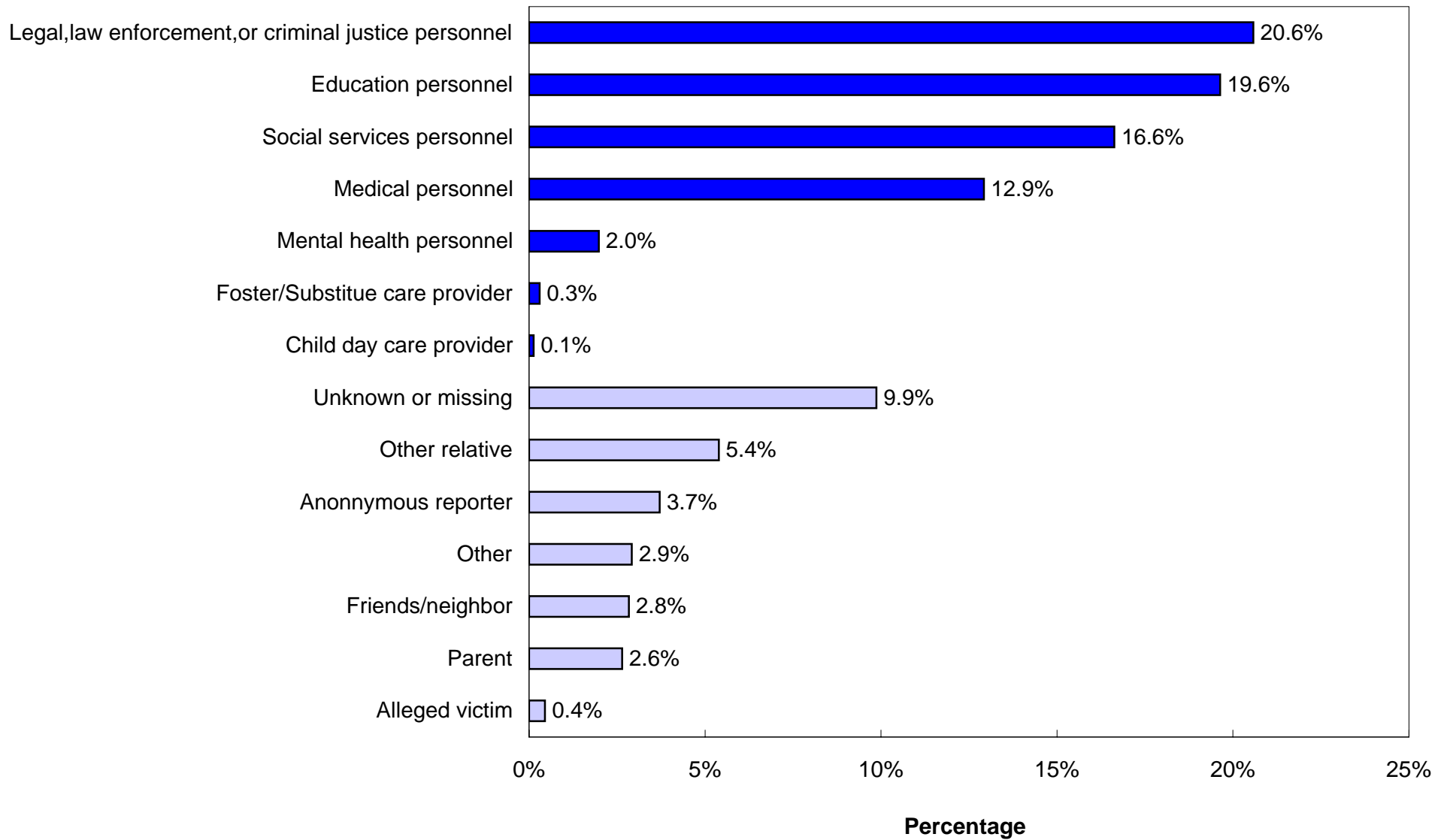
CHILD ABUSE AND NEGLECT IN HAWAII, 2003- 2007

Duplicated Count of Children by Source of Initial Reporter

SOURCE	REPORTED					CONFIRMED				
	2003	2004	2005	2006	2007	2003	2004	2005	2006	2007
MANDATED REPORTERS										
Social services personnel	960	907	744	419	780	457	423	364	182	359
Medical personnel	1152	1045	945	748	606	717	662	606	443	355
Mental health personnel	229	152	106	53	93	103	74	41	28	50
Legal, law enforcement, or criminal justice personnel	1256	1310	1,082	844	965	729	784	606	492	477
Education personnel	1138	1090	872	681	921	555	500	377	294	333
Child day care provider	32	13	4	2	6	27	6	0	0	3
Foster/Substitute care provider	58	60	17	12	14	30	37	9	5	11
Total Mandatory Reporters	4,825	4,577	3,770	2,759	3,385	2,618	2,486	2,003	1,444	1,588
OTHER REPORTERS										
Alleged victim	25	12	12	9	21	6	5	4	9	11
Parent	339	267	190	80	124	153	112	82	41	49
Other relative	576	541	369	255	253	320	251	204	120	134
Friends/neighbor	298	402	233	155	133	84	153	81	58	30
Perpetrator	2	0	0	0	0	0	0	0	0	0
Anonymous	698	566	246	152	174	230	205	89	49	40
Other	477	315	243	161	137	150	112	104	65	66
Unknown	595	143	144	403	463	307	72	78	142	164
Total Other Reporters	3,010	2,246	1,437	1,215	1,305	1,250	910	642	484	494
STATE TOTAL	7,835	6,823	5,207	3,974	4,690	3,868	3,396	2,645	1,928	2,082

CHILD ABUSE AND NEGLECT IN HAWAII, 2007
Mandated and Non-Mandated Source of Initial Reporter

Sources ■ Mandated Sources ■ Non-Mandated Sources



**CHILD ABUSE AND NEGLECT IN HAWAII, 2003-2007
VICTIM**

CONFIRMED DUPLICATED COUNT OF CHILDREN

AGE	2003	2004	2005	2006	2007
Less Than One Year	535	534	464	353	316
1 Year	231	225	174	117	148
2 Years	235	226	156	112	139
3 Years	230	200	145	87	126
4 Years	225	158	156	94	118
5 Years	194	174	141	121	105
6 Years	215	183	123	84	95
7 Years	208	161	116	78	103
8 Years	183	177	130	86	107
9 Years	220	158	127	78	93
10 Years	198	156	122	86	82
11 Years	202	157	111	79	84
12 Years	216	165	107	103	102
13 Years	182	192	147	92	101
14 Years	190	175	159	92	105
15 Years	149	145	107	108	100
16 Years	140	129	80	80	97
17 Years	93	63	67	65	53
Unknown	22	18	13	13	8
Median age	7	6	6	6	6
TOTAL	3,868	3,396	2,645	1,928	2,082
SEX	2003	2004	2005	2006	2007
Male	1,927	1,646	1,274	945	1,004
Female	1,920	1,739	1,366	976	1,071
Unknown	21	11	5	7	7
TOTAL	3,868	3,396	2,645	1,928	2,082

**CHILD ABUSE AND NEGLECT IN HAWAII, 2003-2007
VICTIM**

CONFIRMED DUPLICATED COUNT OF CHILDREN

RACE	2003	2004	2005	2006	2007
Hawaiian/Part Hawaiian	1,588	1,302	1,092	728	641
Mixed	486	455	358	283	345
White	395	352	247	220	228
Filipino	223	230	200	125	148
Samoaan	103	127	90	72	45
Black	83	78	52	40	29
Japanese	49	46	31	34	35
Korean	7	16	6	5	1
American Indian	27	25	20	10	11
Chinese	16	14	10	10	9
Other Pacific Islander	79	66	55	56	66
Hispanic/Spanish	62	95	65	56	55
Vietnamese	6	9	7	7	11
Laotian	3	5	3	3	0
Cambodian	0	2	0	1	1
Alaskan Native	0	5	1	0	0
Unable to Determine	115	108	64	59	97
Missing	626	461	344	219	360
TOTAL	3,868	3,396	2,645	1,928	2,082

SEVERITY OF HARM	2003	2004	2005	2006	2007
Fatal	7*	6	2	5	2
No treatment necessary	2,153	1,919	1,481	1,020	949
Treatment required	568	412	282	217	284
Serious	51	79	96	90	53
Permanent disability	0	1	2	0	0
No injury	1,089	979	782	596	794
TOTAL	3,861	3,396	2,645	1,928	2,082

*There were six victims, one of them was reported twice.

CHILD ABUSE AND NEGLECT IN HAWAII, 2007 VICTIM

CONFIRMED UNDUPLICATED COUNT OF CHILDREN*: AGE, SEX, RACE, SEVERITY

AGE	Number	Percent	RACE	Number	Percent
Less Than One Year	310	15.3			
1 Year	148	7.3	Hawaiian/Part Hawaiian	622	30.6
2 Years	136	6.7	MISSING	353	17.4
3 Years	121	6.0	Mixed	339	16.7
4 Years	113	5.6	White	220	10.8
5 Years	102	5.0	Filipino	146	7.2
6 Years	93	4.6	Unable to determine	94	4.6
7 Years	99	4.9	Other pacific islander	65	3.2
8 Years	102	5.0	Hispanic/Spanish	55	2.7
9 Years	91	4.5	Samoan	45	2.2
10 Years	82	4.0	Japanese	35	1.7
11 Years	81	4.0	Black	26	1.3
12 Years	100	4.9	American Indian	11	0.5
13 Years	99	4.9	Vietnamese	11	0.5
14 Years	101	5.0	Chinese	8	0.4
15 Years	99	4.9	Korean	1	0.0
16 Years	94	4.6	Cambodian	1	0.0
17 Years	53	2.6			
Unknown	8	0.4			
TOTAL	2,032	100.0	TOTAL	2,032	100.0

SEX	Number	Percent	SEVERITY OF HARM	Number	Percent
Male	980	48.2	No treatment necessary	930	45.8
Female	1045	51.4	Treatment required	272	13.4
Unknown	7	0.3	Serious	53	2.6
			Fatal	2	0.1
			No injury	775	38.1
TOTAL	2,032	100.0	TOTAL	2,032	100.0

*A child is only counted once, regardless of how many times he/she was reported.
The highest severity level was selected for a child with more than one confirmed severity.

CHILD ABUSE AND NEGLECT IN HAWAII, 2007
Recurrence*

	Frequency	Percent
No Recurrence**	1,002	97.85
Recurrence***	22	2.15
Total	1,024	100.0

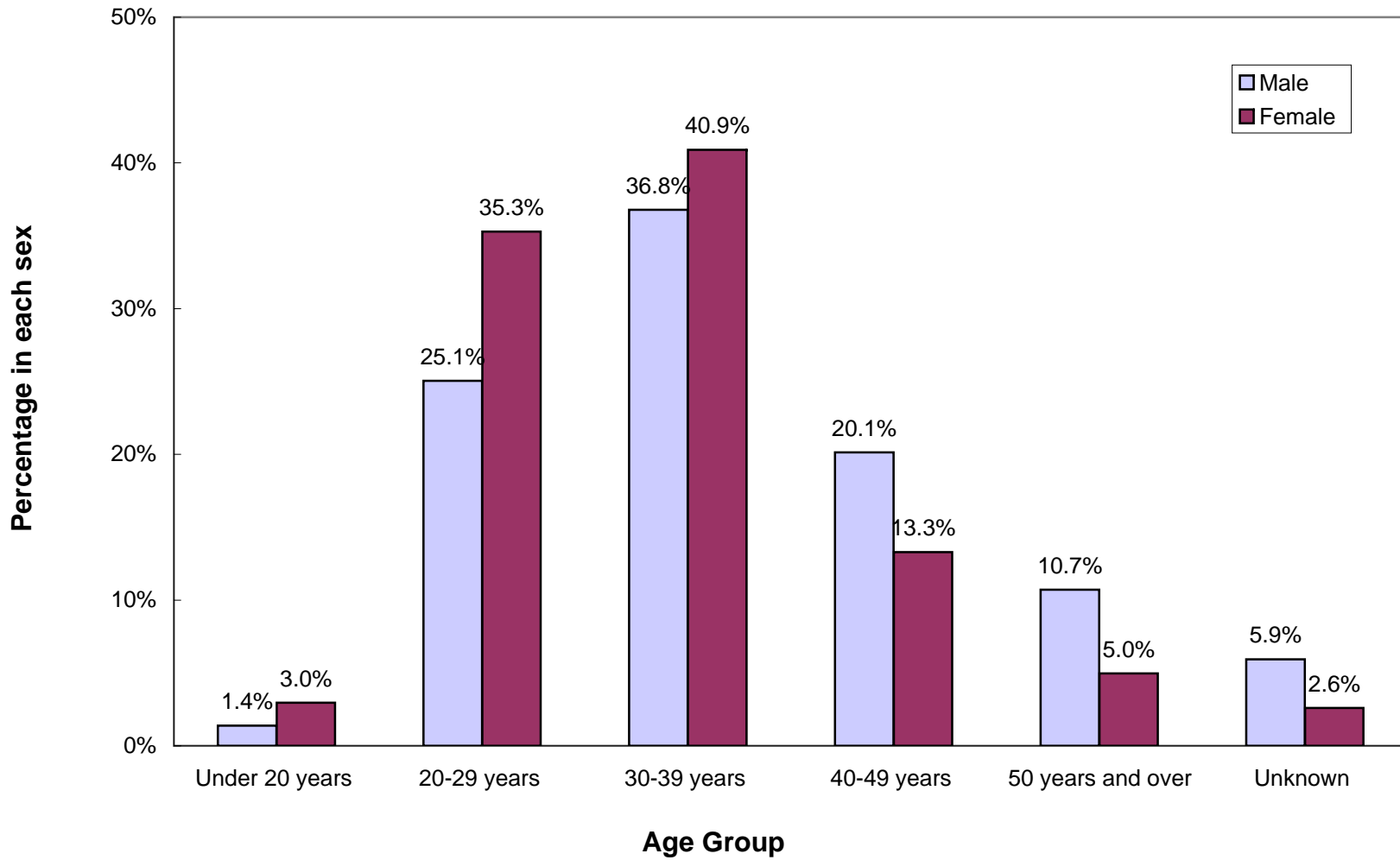
*Only confirmed child victims, whose report year and disposition year were both in 2007 and the initial maltreatment report date fell between January-June, 2007, were included in the recurrence rate calculation.

**Maltreatment occurred between January and June. There was no recurrence within six months.

***First maltreatment occurred between January and June. The second maltreatment occurred within six months.

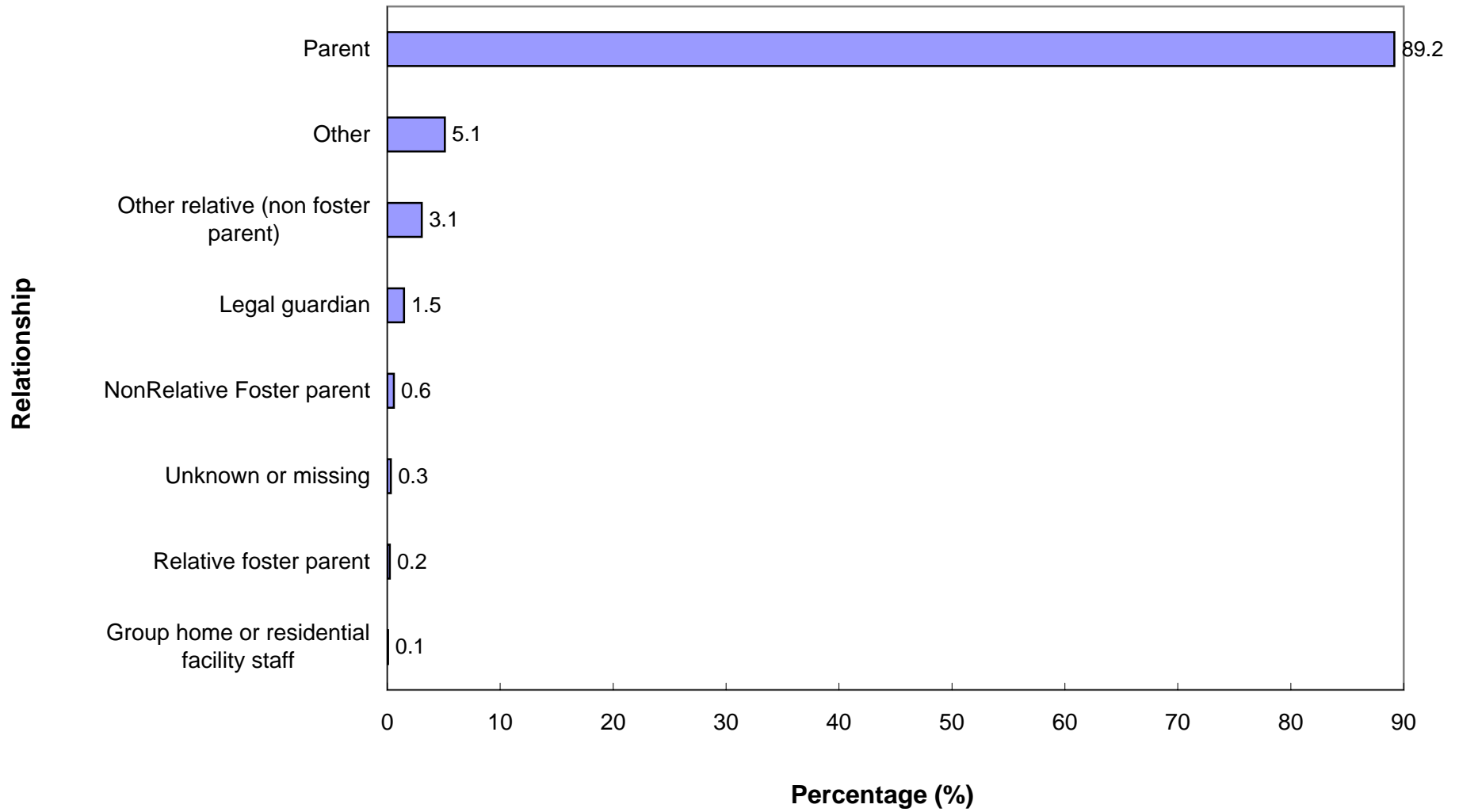
CHILD ABUSE AND NEGLECT IN HAWAII, 2007

Duplicated Count of Perpetrators: Age Group by Sex



CHILD ABUSE AND NEGLECT IN HAWAII, 2007

Relationship of Perpetrator to Confirmed Victim



CHILD ABUSE AND NEGLECT IN HAWAII, 2007

UNDUPLICATED PERPETRATORS FOR CONFIRMED VICTIMS*

AGE	Number	Percent
Under 20 years	61	3.6
20-29 years	527	31.3
30-39 years	576	34.2
40-49 years	301	17.9
50 years and over	139	8.2
Unknown	82	4.9
TOTAL	1,686	100.0

SEX	Number	Percent
Male	736	43.7
Female	943	55.9
Unknown or missing	7	0.4
TOTAL	1,686	100.0

* A perpetrator was counted only once regardless of how many times he/she was associated with a child victim.

CHILD ABUSE AND NEGLECT IN HAWAII, 2003-2007
PERPETRATORS OF CONFIRMED VICTIMS
Duplicated Count of Perpetrators*

RELATIONSHIP TO VICTIM	2003	2004	2005	2006	2007
Parent	5,040	4,244	3,417	2,588	2,752
Other relative	249	233	176	83	94
Foster parent	115	62			
Relative foster parent			58	6	7
NonRelative Foster parent			21	26	18
Group home/Residential facility staff	6	1	2	3	2
Legal guardian	39	53	102	56	46
Foster parent, relationship unspecified				2	0
Other	352	312	210	151	157
Unknown/missing	52	48	37	16	10
TOTAL	5,853	4,953	4,023	2,931	3,086

PERPETRATOR AGE	2003	2004	2005	2006	2007
Under 20 Years	188	199	131	66	69
20 - 29 Years	1,737	1,500	1,336	921	947
30 - 39 Years	2,467	1,988	1,478	1,111	1,200
40 - 49 Years	1,008	814	732	521	503
50 Years or Older	296	331	262	236	232
Unknown	157	121	84	76	135
TOTAL	5,853	4,953	4,023	2,931	3,086

PERPETRATOR SEX	2003	2004	2005	2006	2007
Male	2,578	2199	1,698	1,263	1,381
Female	3,266	2738	2,316	1,647	1,692
Unknown	9	16	9	21	13
TOTAL	5,853	4,953	4,023	2,931	3,086

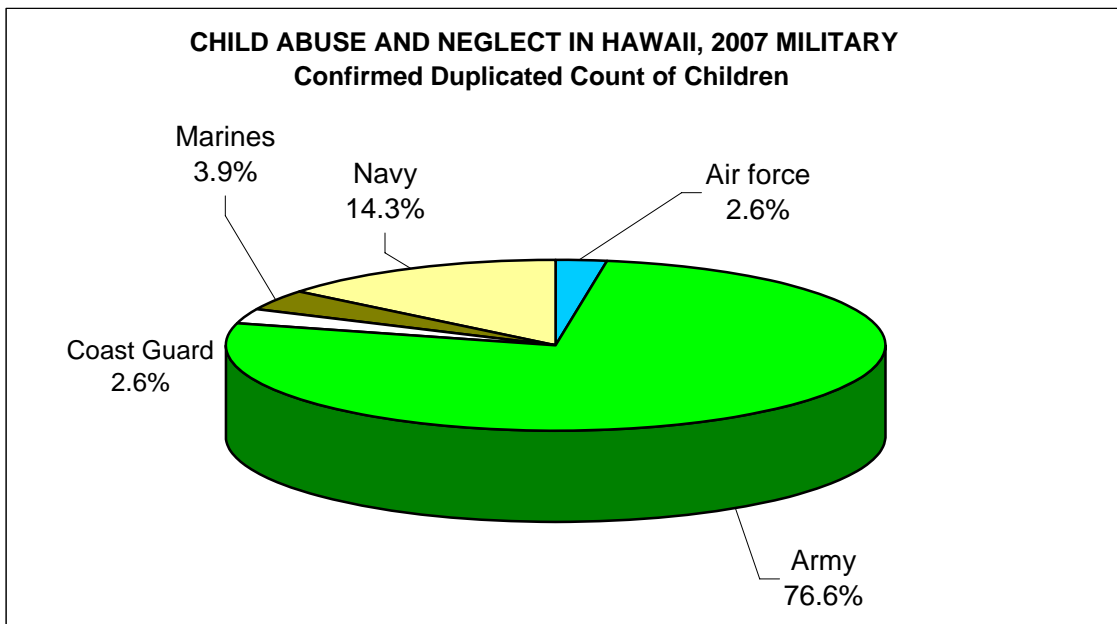
*A perpetrator was counted each time that he/she was associated with a child victim, therefore one perpetrator may have been counted more than once. For example, if an intake had 2 confirmed victims and 2 perpetrators, then the count of perpetrators would be 4.

CHILD ABUSE AND NEGLECT IN HAWAII, 2003-2007 MILITARY

DUPLICATED COUNT OF CHILDREN

Military Branch	REPORTED					CONFIRMED				
	2003	2004	2005	2006	2007	2003	2004	2005	2006	2007
Air force	14	10	7	15	5	6	5	5	5	2
Army	195	117	106	93	123	104	77	58	46	59
Coast Guard	0	3	6	5	3	0	1	2	2	2
Marines	19	21	24	22	19	11	10	6	7	3
Navy	127	62	61	52	26	56	27	26	26	11
National Guard	0	1	0	0	0	0	1	0	0	0
State Total	355	214	204	187	176	177	121	97	86	77

Military Rank	2003	2004	2005	2006	2007	2003	2004	2005	2006	2007
Unspecified	158	72	97	73	43	66	44	49	32	21
Enlisted	179	129	95	100	123	100	70	42	53	52
Non-Commissioned	11	11	11	7	5	8	7	5	1	4
Officer	7	2	1	7	5	3	0	1	0	0
State Total	355	214	204	187	176	177	121	97	86	77



**CHILD ABUSE AND NEGLECT IN HAWAII, 2007
MILITARY**

ABUSE AND NEGLECT TYPES PER CHILD

Total Reported	DUPLICATED COUNT OF TYPES*					UNDUPLICATED COUNT OF TYPES**				
	HAWAII	OAHU	KAUAI	MAUI	TOTAL	HAWAII	OAHU	KAUAI	MAUI	TOTAL
Physical Abuse	0	42	0	0	42	0	41	0	0	41
Neglect	0	48	0	0	48	0	48	0	0	48
Medical Neglect	0	5	0	0	5	0	5	0	0	5
Sexual Abuse	0	9	0	0	9	0	9	0	0	9
Psychological Abuse	0	2	0	0	2	0	2	0	0	2
Threatened Harm	0	155	0	0	155	0	152	0	0	152
Total	0	261	0	0	261	0	257	0	0	257

Confirmed

Physical Abuse	0	9	0	0	9	0	9	0	0	9
Neglect	0	19	0	0	19	0	19	0	0	19
Medical Neglect	0	3	0	0	3	0	3	0	0	3
Sexual Abuse	0	4	0	0	4	0	4	0	0	4
Psychological Abuse	0	1	0	0	1	0	1	0	0	1
Threatened Harm	0	68	0	0	68	0	68	0	0	68
Total	0	104	0	0	104	0	104	0	0	104

Confirmation Rate by Type

Physical Abuse	0%	21%	0%	0%	21%	0%	22%	0%	0%	22%
Neglect	0%	40%	0%	0%	40%	0%	40%	0%	0%	40%
Medical Neglect	0%	60%	0%	0%	60%	0%	60%	0%	0%	60%
Sexual Abuse	0%	44%	0%	0%	44%	0%	44%	0%	0%	44%
Psychological Abuse	0%	0%	0%	0%	0%	0%	0%	0%	0%	0%
Threatened Harm	0%	44%	0%	0%	44%	0%	45%	0%	0%	45%
Total	0%	40%	0%	0%	40%	0%	40%	0%	0%	40%

* A child may have more than one type of abuse/neglect per report and may have been reported more than once within the reporting period. Therefore, the sum of the abuse/neglect types exceeds the count of children.

** A child may have more than one type of abuse/neglect per report and may have been reported more than once within the reporting period, but the same maltreatment was counted only once. Therefore, the sum of the abuse/neglect types exceeds the count of children.

CHILD ABUSE AND NEGLECT IN HAWAII, 2003- 2007
MILITARY
Duplicated Count of Children by Source of Initial Reporter

SOURCE	REPORTED					CONFIRMED				
	2003	2004	2005	2006	2007	2003	2004	2005	2006	2007
MANDATED REPORTERS										
Social services personnel	47	46	20	20	14	28	25	14	13	5
Medical personnel	45	24	47	46	33	16	12	22	19	13
Mental health personnel	6	2	4	1	15	3	1	4	0	10
Legal, law enforcement, or criminal justice personnel	92	71	58	55	44	71	53	33	30	22
Education personnel	54	21	14	15	25	25	7	2	8	7
Child day care provider	2	3	2	1	0	0	0	0	0	0
Substitute/Foster care provider	8	1	0	0	0	0	1	0	0	0
Total Mandatory Reporters	254	168	145	138	131	143	99	75	70	57
OTHER REPORTERS										
Alleged victim	0	0	0	0	0	0	0	0	0	0
Parent	25	7	10	2	3	9	6	5	1	1
Other relative	8	1	5	7	6	3	1	5	2	4
Friends/neighbor	19	12	20	13	10	3	4	4	2	5
Perpetrator	0	0	0	0	0	0	0	0	0	0
Anonymous	8	9	6	6	3	5	8	0	4	0
Other	21	17	10	2	7	5	3	2	1	4
Unknown	20	0	8	19	16	9	0	6	6	6
Total Other Reporters	101	46	59	49	45	34	22	22	16	20
STATE TOTAL	355	214	204	187	176	177	121	97	86	77

CHILD ABUSE AND NEGLECT IN HAWAII, 2003-2007
MILITARY

CONFIRMED DUPLICATED COUNT OF CHILDREN: AGE AND SEX

AGE	2003	2004	2005	2006	2007
Less Than One Year	16	17	22	19	14
1 Year	23	10	14	7	8
2 Years	21	12	12	9	5
3 Years	16	8	4	5	4
4 Years	15	9	4	6	7
5 Years	9	9	10	6	5
6 Years	13	11	4	6	4
7 Years	6	7	6	3	5
8 Years	8	7	2	4	4
9 Years	8	7	5	3	4
10 Years	8	5	3	3	1
11 Years	5	3	2	1	3
12 Years	8	4	4	2	3
13 Years	3	2	0	3	4
14 Years	7	4	1	1	2
15 Years	4	2	0	1	3
16 Years	4	3	0	1	1
17 Years	2	1	2	3	0
Unspecified	1	0	2	3	0
	177	121	97	86	77
SEX	2003	2004	2005	2006	2007
Male	101	57	50	42	42
Female	75	64	46	44	35
Unspecified	1	0	1	0	0
STATE TOTAL	177	121	97	86	77

CHILD ABUSE AND NEGLECT IN HAWAII, 2003-2007
MILITARY

CONFIRMED DUPLICATED COUNT OF CHILDREN: RACE AND SEVERITY

RACE	2003	2004	2005	2006	2007
White	71	43	29	30	20
Black	35	34	24	12	6
Mixed	34	16	16	6	28
Filipino	5	5	4	3	0
Hawaiian/Part Hawaiian	9	3	10	10	6
Japanese	0	1	0	0	0
Mexican	0	0	0	0	0
Korean	0	0	0	0	0
Cambodian	0	0	0	0	0
Chinese	1	1	0	0	0
Puerto Rican	0	0	0	0	0
Other pacific islander	0	0	0	1	1
Samoan	0	0	0	1	0
Vietnamese	0	0	0	0	0
American Indian	1	8	0	1	3
Hispanic/Spanish	3	5	3	10	6
Other	0	0	0	0	0
Unable to determine	2	1	0	4	0
Unknown	16	4	11	8	7
STATE TOTAL	177	121	97	86	77

SEVERITY	2003	2004	2005	2006	2007
Fatal	1	0	0	1	0
Permanent Disability	0	0	0	0	0
Serious	2	4	5	1	0
Treatment	5	7	9	4	18
No Treatment	113	64	60	47	29
No Injury	56	46	23	33	30
Unspecified	0	0	0	0	0
STATE TOTAL	177	121	97	86	77