

A Statistical Report on

**CHILD ABUSE AND NEGLECT
IN HAWAII**

2008

Prepared by

**State of Hawaii
Department of Human Services
Management Services Office**

TABLE OF CONTENTS

LIST OF TABLES

| | |
|---|----|
| Summary | 1 |
| Duplicated Count of Children by County: Reported and Confirmed, 2004 - 2008 | 4 |
| Abuse and Neglect Types By County, Duplicated Count of Types for Each Child | 5 |
| Abuse and Neglect Types By County, Unduplicated Count of Types for Each Child | 6 |
| Unduplicated Count of Children by County District | 7 |
| Duplicated Count of Children by County Districts, 2004 - 2008 | 8 |
| Duplicated Count of Children by Source of Initial Reporter, 2004 - 2008 | 9 |
| Age of Confirmed Duplicated Count of Children, 2004 - 2008 | 11 |
| Sex of Confirmed Duplicated Count of Children, 2004 - 2008 | 11 |
| Race of Confirmed Duplicated Count of Children, 2004 - 2008 | 12 |
| Severity of Harm of Confirmed Duplicated Count of Children, 2004 - 2008 | 12 |
| Age, Sex, and Race of Confirmed Unduplicated Children | 13 |
| Recurrence Rate | 14 |
| Perpetrators of Confirmed Victims: Age and Sex | 17 |
| Perpetrator Relationship to Victim, 2004 - 2008 | 18 |
| Age of Perpetrator, 2004 - 2008 | 18 |
| Sex of Perpetrator, 2004 - 2008 | 18 |

LIST OF FIGURES

| | |
|---|----|
| Duplicated Count of Children, 2004 - 2008 | 2 |
| Percentage of Duplicated Count of Children by County | 3 |
| Duplicated Count of Children by County: Reported and Confirmed, 2004 - 2008 | 4 |
| Duplicated Count of Children by Source of Initial Reporter | 10 |
| Age and Sex of Perpetrators of Confirmed Duplicated Count of Children | 15 |
| Perpetrator Relationship to Victim | 16 |

MILITARY

| | |
|---|----|
| Duplicated Count of Children by Military Branch and Rank, 2004 - 2008 | 19 |
| Abuse and Neglect Types, Duplicated and Unduplicated Count of Types | 20 |
| Duplicated Count of Children by Source of Initial Reporter, 2004 - 2008 | 21 |
| Age of Confirmed Duplicated Count of Children, 2004 - 2008 | 22 |
| Sex of Confirmed Duplicated Count of Children, 2004 - 2008 | 22 |
| Race of Confirmed Duplicated Count of Children, 2004 - 2008 | 23 |
| Severity of Harm of Confirmed Duplicated Count of Children, 2004 - 2008 | 23 |

CHILD ABUSE AND NEGLECT IN HAWAII, 2008 SUMMARY

| | HAWAII | OAHU | KAUAI | MAUI | TOTAL |
|---|--------|-------|-------|------|-------|
| INTAKES | | | | | |
| Confirmed | 181 | 674 | 65 | 136 | 1,056 |
| Not Confirmed | 300 | 840 | 116 | 210 | 1,466 |
| Total Reported | 481 | 1,514 | 181 | 346 | 2,522 |
| Percent Confirmed | 38% | 45% | 36% | 39% | 42% |
| DUPLICATED COUNT OF CHILDREN | | | | | |
| Confirmed | 339 | 1,196 | 95 | 220 | 1,850 |
| Not Confirmed | 583 | 1,594 | 221 | 380 | 2,778 |
| Total Reported | 922 | 2,790 | 316 | 600 | 4,628 |
| Percent Confirmed | 37% | 43% | 30% | 37% | 40% |
| UNDUPLICATED COUNT OF CHILDREN | | | | | |
| Confirmed | 331 | 1,159 | 95 | 206 | 1,791 |
| Not Confirmed | 542 | 1,467 | 206 | 326 | 2,541 |
| Total Reported | 873 | 2,626 | 301 | 532 | 4,332 |
| Percent Confirmed | 38% | 44% | 32% | 39% | 41% |

Intakes: reports accepted for investigation.

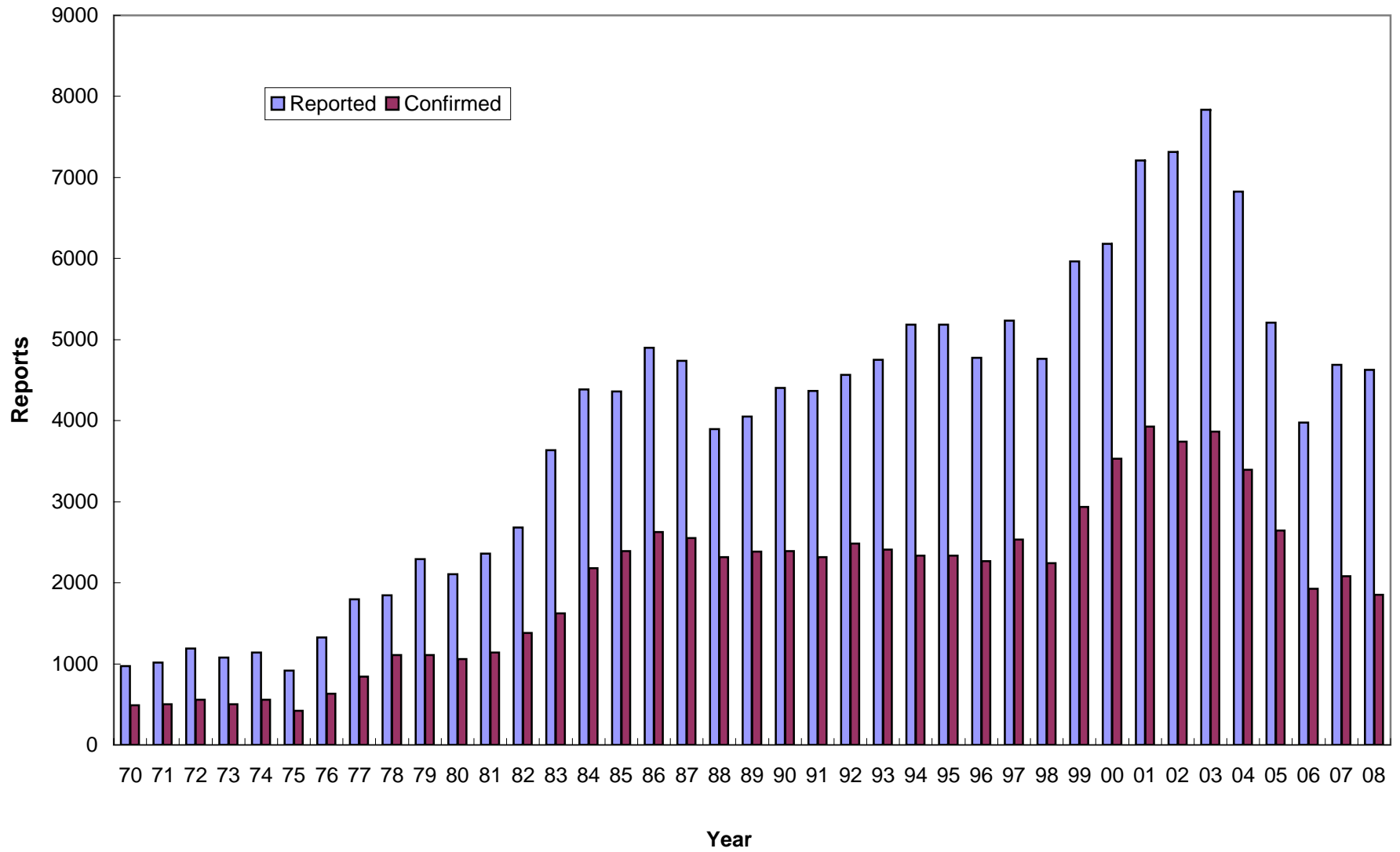
Duplicated count: counted by reports, a child is counted each time that he/she was found to be a victim.

Unduplicated count: counted by child, a child is counted only once during the reporting period, regardless of how many times the child was reported.

Note: In this report, data from 1999 and before were based on report date, data from 2000 and after were based on disposition date.

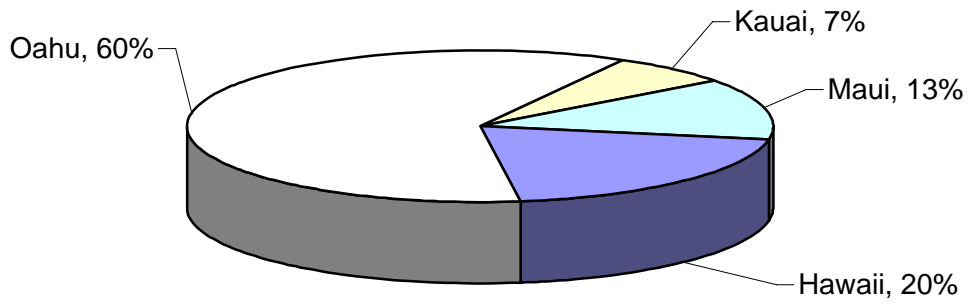
CHILD ABUSE AND NEGLECT IN HAWAII, 1970-2008

Duplicated Count of Children

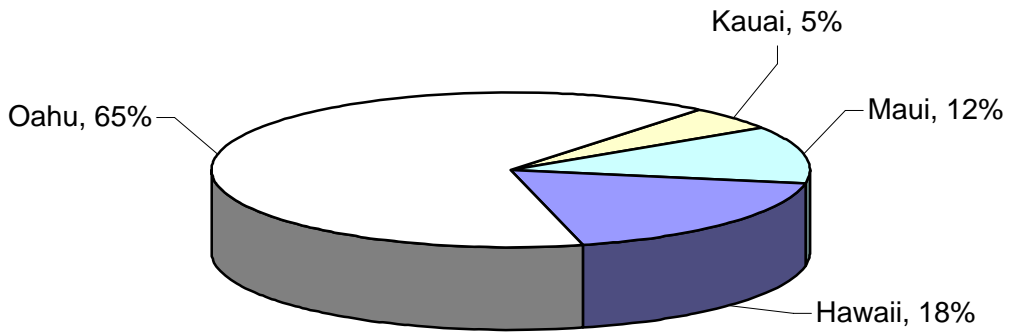


CHILD ABUSE AND NEGLECT IN HAWAII, 2008

Total Count of Children



Total Count of Children

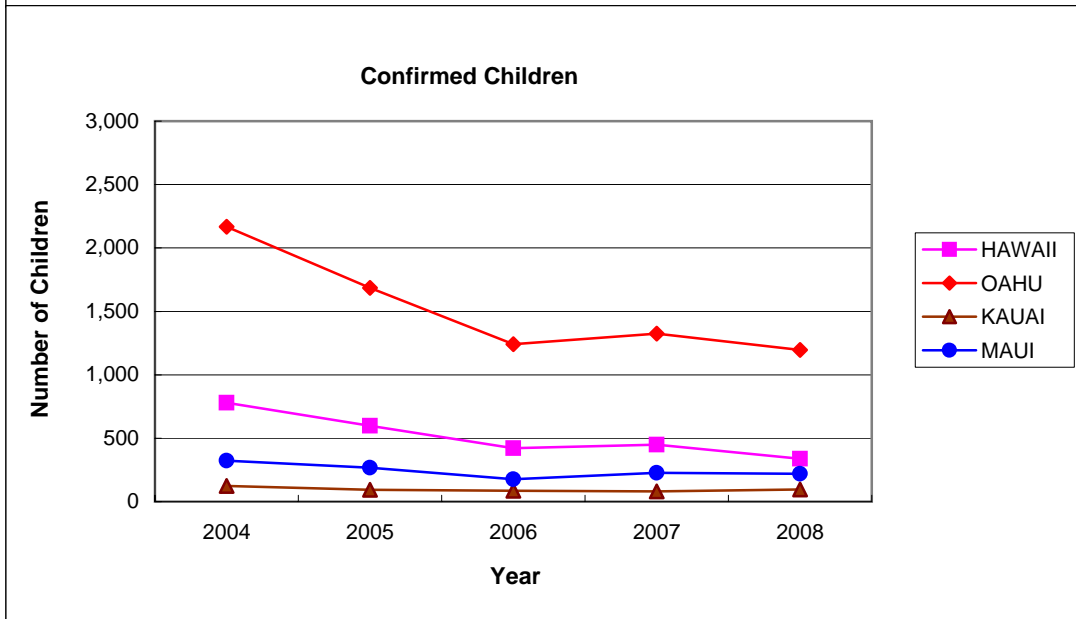
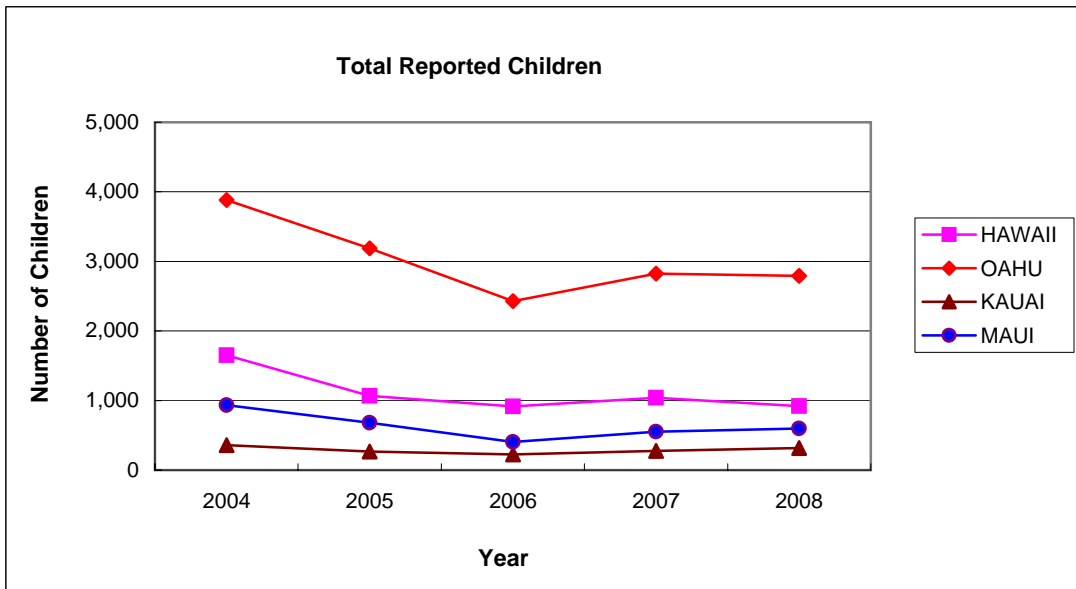


Count of Confirmed Children

CHILD ABUSE AND NEGLECT IN HAWAII, 2004-2008

Duplicated Count of Children by County

| DISTRICT | REPORTED | | | | | CONFIRMED | | | | |
|---------------|--------------|--------------|--------------|--------------|--------------|--------------|--------------|--------------|--------------|--------------|
| | 2004 | 2005 | 2006 | 2007 | 2008 | 2004 | 2005 | 2006 | 2007 | 2008 |
| HAWAII | 1,653 | 1,069 | 914 | 1,040 | 922 | 780 | 598 | 422 | 450 | 339 |
| OAHU | 3,880 | 3,189 | 2,429 | 2,826 | 2,790 | 2,168 | 1,686 | 1,242 | 1,324 | 1,196 |
| KAUAI | 357 | 267 | 226 | 274 | 316 | 124 | 93 | 87 | 82 | 95 |
| MAUI | 933 | 682 | 405 | 550 | 600 | 324 | 268 | 177 | 226 | 220 |
| STATE | 6,823 | 5,207 | 3,974 | 4,690 | 4,628 | 3,396 | 2,645 | 1,928 | 2,082 | 1,850 |



CHILD ABUSE AND NEGLECT IN HAWAII, 2008

ABUSE AND NEGLECT TYPES BY COUNTY

DUPLICATED COUNT OF TYPES FOR EACH CHILD*

| Total Reported: | HAWAII | OAHU | KAUAI | MAUI | Total |
|------------------------|---------------|--------------|--------------|-------------|--------------|
| Physical Abuse | 150 | 525 | 61 | 113 | 849 |
| Neglect | 150 | 572 | 64 | 94 | 880 |
| Medical Neglect | 10 | 52 | 7 | 7 | 76 |
| Sexual Abuse | 81 | 190 | 17 | 44 | 332 |
| Psychological Abuse | 14 | 37 | 6 | 7 | 64 |
| Threatened Harm | 859 | 2,632 | 296 | 559 | 4,346 |
| Total | 1,264 | 4,008 | 451 | 824 | 6,547 |

Confirmed:

| | | | | | |
|---------------------|------------|--------------|------------|------------|--------------|
| Physical Abuse | 28 | 151 | 8 | 18 | 205 |
| Neglect | 31 | 206 | 9 | 24 | 270 |
| Medical Neglect | 3 | 20 | 5 | 2 | 30 |
| Sexual Abuse | 24 | 63 | 5 | 15 | 107 |
| Psychological Abuse | 5 | 17 | 4 | 0 | 26 |
| Threatened Harm | 312 | 1,096 | 83 | 199 | 1,690 |
| Total | 403 | 1,553 | 114 | 258 | 2,328 |

Confirmation Rate by Type

| | | | | | |
|---------------------|------------|------------|------------|------------|------------|
| Physical Abuse | 19% | 29% | 13% | 16% | 24% |
| Neglect | 21% | 36% | 14% | 26% | 31% |
| Medical Neglect | 30% | 38% | 71% | 29% | 39% |
| Sexual Abuse | 30% | 33% | 29% | 34% | 32% |
| Psychological Abuse | 36% | 46% | 67% | 0% | 41% |
| Threatened Harm | 36% | 42% | 28% | 36% | 39% |
| Total | 32% | 39% | 25% | 31% | 36% |

* A child may have more than one type of abuse/neglect per report and may have been reported more than once within the reporting period. Therefore, the sum of the abuse/neglect types exceeds the count of children.

CHILD ABUSE AND NEGLECT IN HAWAII, 2008

ABUSE AND NEGLECT TYPES BY COUNTY

UNDUPLICATED COUNT OF TYPES FOR EACH CHILD*

Total Reported:

| | HAWAII | OAHU | KAUAI | MAUI | Total |
|---------------------|--------------|--------------|------------|------------|--------------|
| Physical Abuse | 147 | 512 | 60 | 110 | 829 |
| Neglect | 148 | 563 | 61 | 87 | 859 |
| Medical Neglect | 10 | 52 | 7 | 7 | 76 |
| Sexual Abuse | 80 | 188 | 17 | 42 | 327 |
| Psychological Abuse | 14 | 37 | 6 | 7 | 64 |
| Threatened Harm | 815 | 2,485 | 283 | 498 | 4,081 |
| Total | 1,214 | 3,837 | 434 | 751 | 6,236 |

Confirmed:

| | | | | | |
|---------------------|------------|--------------|------------|------------|--------------|
| Physical Abuse | 28 | 148 | 8 | 18 | 202 |
| Neglect | 31 | 205 | 9 | 24 | 269 |
| Medical Neglect | 3 | 20 | 5 | 2 | 30 |
| Sexual Abuse | 24 | 63 | 5 | 15 | 107 |
| Psychological Abuse | 5 | 17 | 4 | 0 | 26 |
| Threatened Harm | 305 | 1,064 | 83 | 188 | 1,640 |
| Total | 396 | 1,517 | 114 | 247 | 2,274 |

Confirmation Rate by Type

| | | | | | |
|---------------------|------------|------------|------------|------------|------------|
| Physical Abuse | 19% | 29% | 13% | 16% | 24% |
| Neglect | 21% | 36% | 15% | 28% | 31% |
| Medical Neglect | 30% | 38% | 71% | 29% | 39% |
| Sexual Abuse | 30% | 34% | 29% | 36% | 33% |
| Psychological Abuse | 36% | 46% | 67% | 0% | 41% |
| Threatened Harm | 37% | 43% | 29% | 38% | 40% |
| Total | 33% | 40% | 26% | 33% | 36% |

* A child may have more than one type of abuse/neglect per report and may have been reported more than once within the reporting period, but the same maltreatment was counted only once . Therefore, the sum of the abuse/neglect types exceeds the count of children.

CHILD ABUSE AND NEGLECT IN HAWAII, 2008

NUMBER OF UNDUPLICATED CHILDREN BY DISTRICT

| | CONFIRMED | NOT CONFIRMED | TOTAL |
|--------------------|--------------|---------------|--------------|
| HAWAII | | | |
| N. Hilo | 0 | 0 | 0 |
| S. Hilo | 64 | 89 | 153 |
| Puna | 51 | 86 | 137 |
| Kau | 14 | 9 | 23 |
| S. Kona | 4 | 5 | 9 |
| N. Kona | 18 | 36 | 54 |
| S. Kohala | 7 | 4 | 11 |
| N. Kohala | 3 | 7 | 10 |
| Hamakua | 1 | 9 | 10 |
| Unspecified | 169 | 297 | 466 |
| Total | 331 | 542 | 873 |
| OAHU | | | |
| Honolulu | 284 | 420 | 704 |
| Ewa | 308 | 397 | 705 |
| Wahiawa | 101 | 84 | 185 |
| Waianae | 215 | 237 | 452 |
| Waialua | 9 | 14 | 23 |
| Koolauloa | 37 | 27 | 64 |
| Koolaupoko | 144 | 205 | 349 |
| Unspecified | 61 | 83 | 144 |
| Total | 1,159 | 1,467 | 2,626 |
| KAUAI | | | |
| Lihue | 20 | 46 | 66 |
| Koloa | 6 | 26 | 32 |
| Waimea | 15 | 35 | 50 |
| Hanalei | 13 | 11 | 24 |
| Kawaihau | 19 | 48 | 67 |
| Unspecified | 22 | 40 | 62 |
| Total | 95 | 206 | 301 |
| MAUI | | | |
| Lahaina | 19 | 15 | 34 |
| Wailuku | 56 | 83 | 139 |
| Makawao | 31 | 89 | 120 |
| Hana | 4 | 2 | 6 |
| Molokai | 19 | 9 | 28 |
| Lanai | 8 | 5 | 13 |
| Unspecified | 69 | 123 | 192 |
| Total | 206 | 326 | 532 |
| STATE TOTAL | 1,791 | 2,541 | 4,332 |

CHILD ABUSE AND NEGLECT IN HAWAII, 2004-2008

Duplicated Count of Children by County District

| DISTRICT | REPORTED | | | | | CONFIRMED | | | | |
|----------------------|--------------|--------------|--------------|--------------|--------------|--------------|--------------|--------------|--------------|--------------|
| | 2004 | 2005 | 2006 | 2007 | 2008 | 2004 | 2005 | 2006 | 2007 | 2008 |
| HAWAII COUNTY | 1,653 | 1,069 | 914 | 1,040 | 922 | 780 | 598 | 422 | 450 | 339 |
| N. Hilo | 20 | 9 | 4 | 3 | 0 | 7 | 0 | 0 | 1 | 0 |
| S. Hilo | 473 | 197 | 157 | 167 | 168 | 160 | 121 | 86 | 67 | 66 |
| Puna | 525 | 247 | 181 | 177 | 143 | 216 | 129 | 79 | 45 | 51 |
| Kau | 51 | 36 | 26 | 32 | 26 | 30 | 20 | 21 | 25 | 14 |
| S. Kona | 42 | 28 | 25 | 16 | 11 | 23 | 17 | 8 | 12 | 4 |
| N. Kona | 134 | 90 | 45 | 41 | 63 | 89 | 53 | 23 | 17 | 18 |
| S. Kohala | 78 | 59 | 42 | 44 | 11 | 54 | 36 | 15 | 26 | 7 |
| N. Kohala | 34 | 14 | 16 | 7 | 11 | 23 | 8 | 4 | 3 | 3 |
| Hamakua | 55 | 9 | 14 | 7 | 10 | 12 | 4 | 3 | 2 | 1 |
| Unspecified | 241 | 380 | 404 | 546 | 479 | 166 | 210 | 183 | 252 | 175 |
| OAHU | 3,880 | 3,189 | 2,429 | 2,826 | 2,790 | 2,168 | 1,686 | 1,242 | 1,324 | 1,196 |
| Honolulu | 959 | 815 | 634 | 740 | 735 | 530 | 415 | 302 | 336 | 293 |
| Ewa | 719 | 759 | 665 | 809 | 748 | 391 | 410 | 336 | 377 | 314 |
| Wahiawa | 151 | 270 | 193 | 200 | 191 | 83 | 140 | 103 | 108 | 103 |
| Waianae | 801 | 705 | 466 | 505 | 500 | 472 | 440 | 283 | 248 | 224 |
| Waialua | 39 | 40 | 43 | 45 | 24 | 21 | 18 | 22 | 19 | 9 |
| Koolauloa | 34 | 55 | 44 | 51 | 70 | 20 | 31 | 21 | 25 | 37 |
| Koolaupoko | 384 | 363 | 246 | 284 | 368 | 211 | 153 | 108 | 109 | 152 |
| Unspecified | 793 | 182 | 138 | 192 | 154 | 440 | 79 | 67 | 102 | 64 |
| KAUAI COUNTY | 357 | 267 | 226 | 274 | 316 | 124 | 93 | 87 | 82 | 95 |
| Lihue | 68 | 54 | 47 | 60 | 70 | 20 | 18 | 17 | 19 | 20 |
| Koloa | 58 | 50 | 30 | 34 | 33 | 14 | 17 | 6 | 7 | 6 |
| Waimea | 53 | 32 | 30 | 26 | 52 | 17 | 11 | 2 | 6 | 15 |
| Hanalei | 33 | 9 | 19 | 15 | 24 | 11 | 2 | 8 | 3 | 13 |
| Kawaihau | 128 | 68 | 62 | 76 | 68 | 53 | 26 | 34 | 30 | 19 |
| Unspecified | 17 | 54 | 38 | 63 | 69 | 9 | 19 | 20 | 17 | 22 |
| MAUI COUNTY | 933 | 682 | 405 | 550 | 600 | 324 | 268 | 177 | 226 | 220 |
| Lahaina | 109 | 68 | 26 | 36 | 44 | 35 | 26 | 11 | 15 | 19 |
| Wailuku | 447 | 338 | 174 | 178 | 158 | 174 | 140 | 79 | 72 | 60 |
| Makawao | 194 | 134 | 70 | 88 | 133 | 60 | 51 | 36 | 45 | 35 |
| Hana | 20 | 2 | | 1 | 6 | 2 | 0 | 0 | 0 | 4 |
| Molokai | 40 | 21 | 11 | 31 | 30 | 14 | 9 | 4 | 9 | 19 |
| Lanai | 14 | 5 | 1 | 12 | 25 | 6 | 2 | 1 | 8 | 14 |
| Unspecified | 109 | 114 | 123 | 204 | 204 | 33 | 40 | 46 | 77 | 69 |
| STATE TOTAL | 6,823 | 5,207 | 3,974 | 4,690 | 4,628 | 3,396 | 2,645 | 1,928 | 2,082 | 1,850 |

CHILD ABUSE AND NEGLECT IN HAWAII, 2004- 2008

Duplicated Count of Children by Source of Initial Reporter

| SOURCE | REPORTED | | | | | CONFIRMED | | | | |
|--|--------------|--------------|--------------|--------------|--------------|--------------|--------------|--------------|--------------|--------------|
| | 2004 | 2005 | 2006 | 2007 | 2008 | 2004 | 2005 | 2006 | 2007 | 2008 |
| MANDATED REPORTERS | | | | | | | | | | |
| Social services personnel | 907 | 744 | 419 | 780 | 821 | 423 | 364 | 182 | 359 | 314 |
| Medical personnel | 1045 | 945 | 748 | 606 | 559 | 662 | 606 | 443 | 355 | 306 |
| Mental health personnel | 152 | 106 | 53 | 93 | 76 | 74 | 41 | 28 | 50 | 25 |
| Legal, law enforcement, or criminal justice personnel | 1310 | 1,082 | 844 | 965 | 936 | 784 | 606 | 492 | 477 | 445 |
| Education personnel | 1090 | 872 | 681 | 921 | 919 | 500 | 377 | 294 | 333 | 326 |
| Child day care provider | 13 | 4 | 2 | 6 | 10 | 6 | 0 | 0 | 3 | 3 |
| Foster/Substitute care provider | 60 | 17 | 12 | 14 | 2 | 37 | 9 | 5 | 11 | 0 |
| Total Mandatory Reporters | 4,577 | 3,770 | 2,759 | 3,385 | 3,323 | 2,486 | 2,003 | 1,444 | 1,588 | 1,419 |
| OTHER REPORTERS | | | | | | | | | | |
| Alleged victim | 12 | 12 | 9 | 21 | 3 | 5 | 4 | 9 | 11 | 2 |
| Parent | 267 | 190 | 80 | 124 | 107 | 112 | 82 | 41 | 49 | 22 |
| Other relative | 541 | 369 | 255 | 253 | 276 | 251 | 204 | 120 | 134 | 109 |
| Friends/neighbor | 402 | 233 | 155 | 133 | 159 | 153 | 81 | 58 | 30 | 51 |
| Perpetrator | 0 | 0 | 0 | 0 | 0 | 0 | 0 | 0 | 0 | 0 |
| Anonymous | 566 | 246 | 152 | 174 | 190 | 205 | 89 | 49 | 40 | 69 |
| Other | 315 | 243 | 161 | 137 | 140 | 112 | 104 | 65 | 66 | 46 |
| Unknown | 143 | 144 | 403 | 463 | 430 | 72 | 78 | 142 | 164 | 132 |
| Total Other Reporters | 2,246 | 1,437 | 1,215 | 1,305 | 1,305 | 910 | 642 | 484 | 494 | 431 |
| STATE TOTAL | 6,823 | 5,207 | 3,974 | 4,690 | 4,628 | 3,396 | 2,645 | 1,928 | 2,082 | 1,850 |

CHILD ABUSE AND NEGLECT IN HAWAII, 2008
Mandated and Non-Mandated Source of Initial Reporter

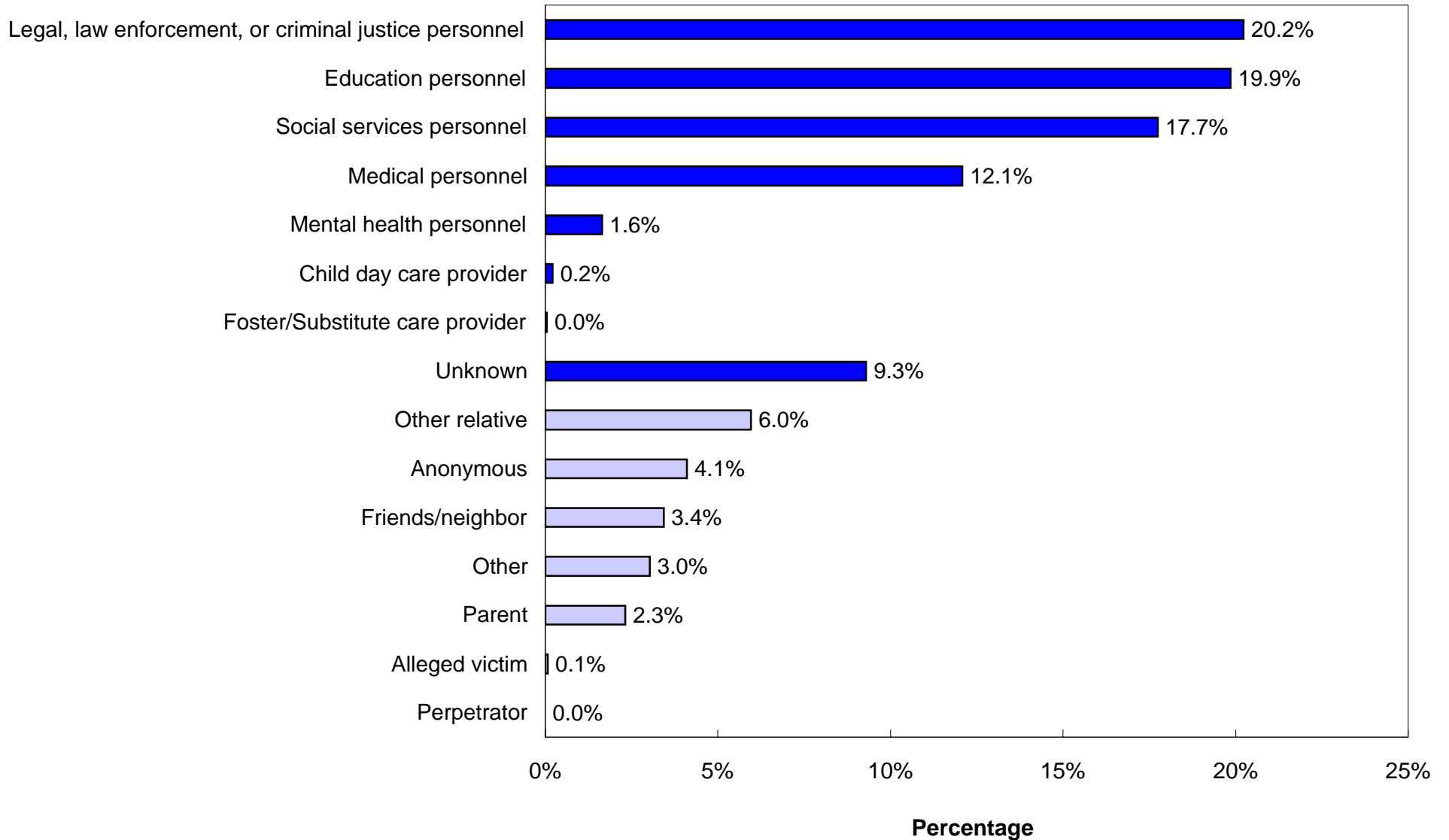
Sources



Mandated Sources



Non-Mandated Sources



**CHILD ABUSE AND NEGLECT IN HAWAII, 2004-2008
VICTIM**

CONFIRMED DUPLICATED COUNT OF CHILDREN

| AGE | 2004 | 2005 | 2006 | 2007 | 2008 |
|--------------------|--------------|--------------|--------------|--------------|--------------|
| Less Than One Year | 534 | 464 | 353 | 316 | 294 |
| 1 Year | 225 | 174 | 117 | 148 | 130 |
| 2 Years | 226 | 156 | 112 | 139 | 113 |
| 3 Years | 200 | 145 | 87 | 126 | 99 |
| 4 Years | 158 | 156 | 94 | 118 | 87 |
| 5 Years | 174 | 141 | 121 | 105 | 99 |
| 6 Years | 183 | 123 | 84 | 95 | 110 |
| 7 Years | 161 | 116 | 78 | 103 | 91 |
| 8 Years | 177 | 130 | 86 | 107 | 92 |
| 9 Years | 158 | 127 | 78 | 93 | 93 |
| 10 Years | 156 | 122 | 86 | 82 | 82 |
| 11 Years | 157 | 111 | 79 | 84 | 87 |
| 12 Years | 165 | 107 | 103 | 102 | 68 |
| 13 Years | 192 | 147 | 92 | 101 | 75 |
| 14 Years | 175 | 159 | 92 | 105 | 99 |
| 15 Years | 145 | 107 | 108 | 100 | 85 |
| 16 Years | 129 | 80 | 80 | 97 | 91 |
| 17 Years | 63 | 67 | 65 | 53 | 54 |
| Unknown | 18 | 13 | 13 | 8 | 1 |
| Median age | 6 | 6 | 6 | 6 | 6 |
| TOTAL | 3,396 | 2,645 | 1,928 | 2,082 | 1,850 |
| SEX | 2004 | 2005 | 2006 | 2007 | 2008 |
| Male | 1,646 | 1,274 | 945 | 1,004 | 899 |
| Female | 1,739 | 1,366 | 976 | 1,071 | 943 |
| Unknown | 11 | 5 | 7 | 7 | 8 |
| TOTAL | 3,396 | 2,645 | 1,928 | 2,082 | 1,850 |

**CHILD ABUSE AND NEGLECT IN HAWAII, 2004-2008
VICTIM**

CONFIRMED DUPLICATED COUNT OF CHILDREN

| RACE | 2004 | 2005 | 2006 | 2007 | 2008 |
|------------------------|--------------|--------------|--------------|--------------|--------------|
| Hawaiian/Part Hawaiian | 1,302 | 1,092 | 728 | 641 | 662 |
| Mixed | 455 | 358 | 283 | 345 | 272 |
| White | 352 | 247 | 220 | 228 | 231 |
| Filipino | 230 | 200 | 125 | 148 | 115 |
| Samoan | 127 | 90 | 72 | 45 | 100 |
| Black | 78 | 52 | 40 | 29 | 40 |
| Japanese | 46 | 31 | 34 | 35 | 34 |
| Korean | 16 | 6 | 5 | 1 | 6 |
| American Indian | 25 | 20 | 10 | 11 | 6 |
| Chinese | 14 | 10 | 10 | 9 | 6 |
| Other Pacific Islander | 66 | 55 | 56 | 66 | 69 |
| Hispanic/Spanish | 95 | 65 | 56 | 55 | 67 |
| Vietnamese | 9 | 7 | 7 | 11 | 3 |
| Laotian | 5 | 3 | 3 | 0 | 2 |
| Cambodian | 2 | 0 | 1 | 1 | 0 |
| Alaskan Native | 5 | 1 | 0 | 0 | 0 |
| Unable to Determine | 108 | 64 | 59 | 97 | 56 |
| Missing | 461 | 344 | 219 | 360 | 181 |
| TOTAL | 3,396 | 2,645 | 1,928 | 2,082 | 1,850 |

| SEVERITY OF HARM | 2004 | 2005 | 2006 | 2007 | 2008 |
|-------------------------|--------------|--------------|--------------|--------------|--------------|
| Fatal | 6 | 2 | 5 | 2 | 1 |
| No treatment necessary | 1,919 | 1,481 | 1,020 | 949 | 828 |
| Treatment required | 412 | 282 | 217 | 284 | 212 |
| Serious | 79 | 96 | 90 | 53 | 51 |
| Permanent disability | 1 | 2 | 0 | 0 | 1 |
| No injury | 979 | 782 | 596 | 794 | 757 |
| TOTAL | 3,396 | 2,645 | 1,928 | 2,082 | 1,850 |

CHILD ABUSE AND NEGLECT IN HAWAII, 2008 VICTIM

CONFIRMED UNDUPLICATED COUNT OF CHILDREN*: AGE, SEX, RACE, SEVERITY

| AGE | Number | Percent | RACE | Number | Percent |
|--------------------|--------------|--------------|------------------------|--------------|--------------|
| Less Than One Year | 288 | 16.1 | MISSING | 177 | 9.9 |
| 1 Year | 129 | 7.2 | American Indian | 6 | 0.3 |
| 2 Years | 103 | 5.8 | Black | 40 | 2.2 |
| 3 Years | 97 | 5.4 | Chinese | 6 | 0.3 |
| 4 Years | 86 | 4.8 | Filipino | 111 | 6.2 |
| 5 Years | 96 | 5.4 | Hawaiian/Part Hawaiian | 634 | 35.4 |
| 6 Years | 106 | 5.9 | Hispanic/Spanish | 64 | 3.6 |
| 7 Years | 89 | 5.0 | Japanese | 33 | 1.8 |
| 8 Years | 89 | 5.0 | Korean | 6 | 0.3 |
| 9 Years | 87 | 4.9 | Laotian | 2 | 0.1 |
| 10 Years | 79 | 4.4 | Mixed | 264 | 14.7 |
| 11 Years | 83 | 4.6 | Other pacific islander | 64 | 3.6 |
| 12 Years | 64 | 3.6 | Samoan | 99 | 5.5 |
| 13 Years | 72 | 4.0 | Unable to determine | 55 | 3.1 |
| 14 Years | 97 | 5.4 | Vietnamese | 3 | 0.2 |
| 15 Years | 81 | 4.5 | White | 227 | 12.7 |
| 16 Years | 91 | 5.1 | | | |
| 17 Years | 53 | 3.0 | | | |
| Unknown | 1 | 0.1 | | | |
| TOTAL | 1,791 | 100.0 | TOTAL | 1,791 | 100.0 |

| SEX | Number | Percent | SEVERITY OF HARM | Number | Percent |
|--------------------|--------------|------------|------------------------|--------------|--------------|
| Male | 868 | 48.5 | No treatment necessary | 802 | 44.8 |
| Female | 915 | 51.1 | Treatment required | 205 | 11.5 |
| Unknown or missing | 8 | 0.5 | Serious | 50 | 2.8 |
| | | | Permanent disability | 1 | 0.1 |
| | | | Fatal | 1 | 0.1 |
| | | | No injury | 732 | 40.9 |
| TOTAL | 1,791 | 100 | TOTAL | 1,791 | 100.0 |

*A child is only counted once, regardless of how many times he/she was reported.

The highest severity level was selected for a child with more than one confirmed severity.

CHILD ABUSE AND NEGLECT IN HAWAII, 2008
Recurrence*

| | Frequency | Percent |
|------------------------|------------|--------------|
| No Recurrence** | 922 | 96.54 |
| Recurrence*** | 33 | 3.46 |
| Total | 955 | 100.0 |

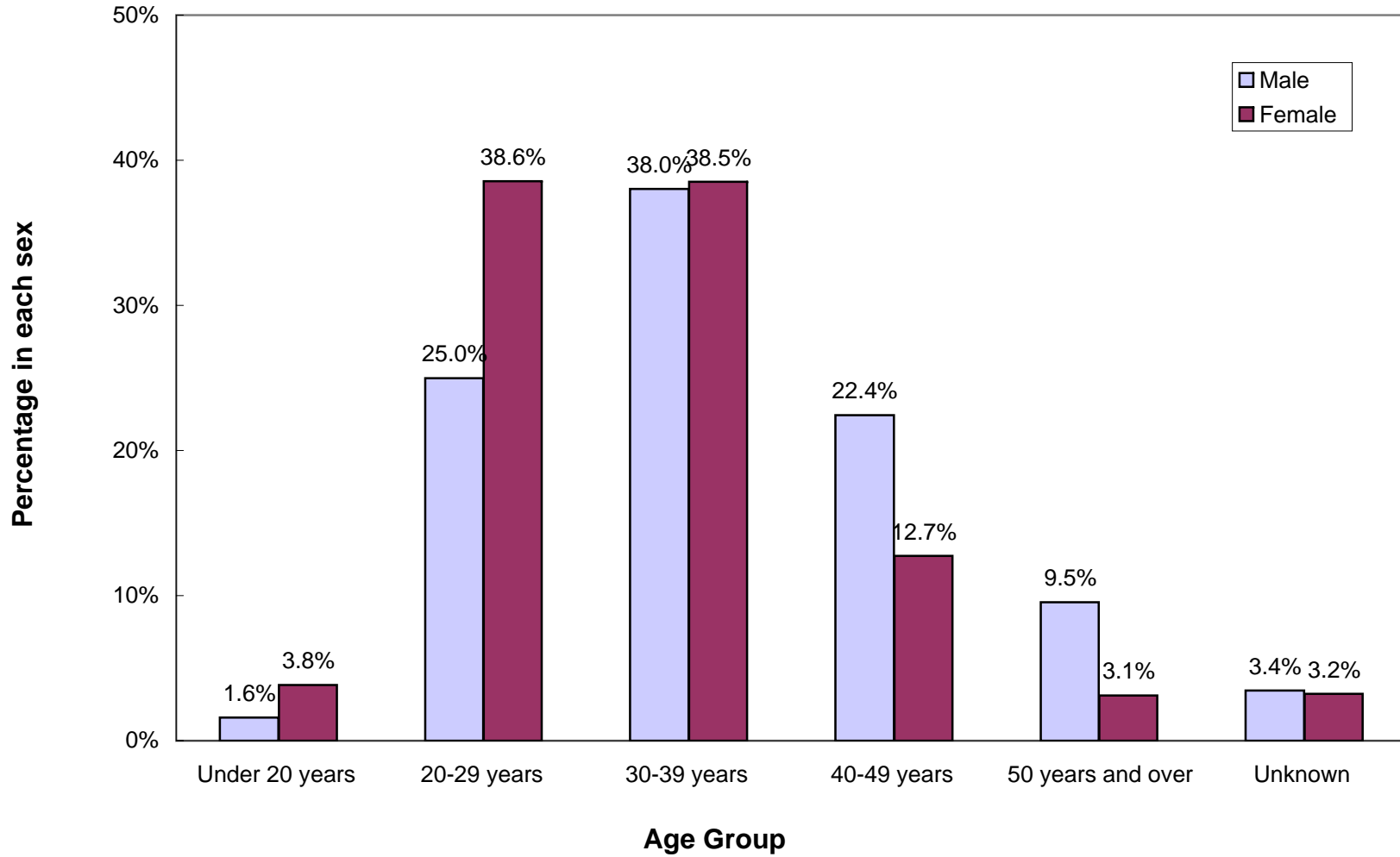
*Only confirmed child victims, whose report year and disposition year were both in 2008 and the initial maltreatment report date fell between January-June, 2008, were included in the recurrence rate calculation.

**Maltreatment occurred between January and June. There was no recurrence within six months.

***First maltreatment occurred between January and June. The second maltreatment occurred within six months.

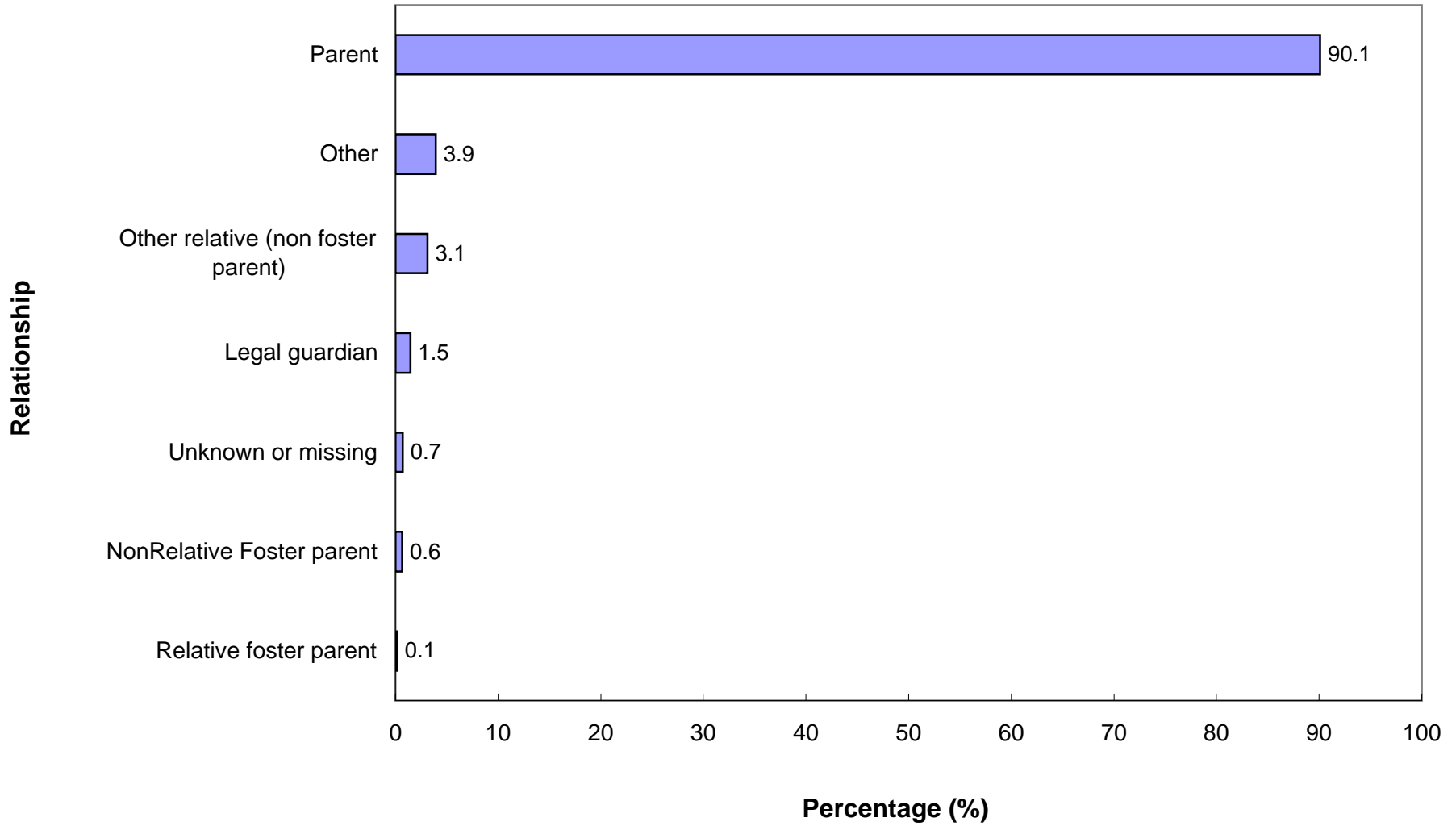
CHILD ABUSE AND NEGLECT IN HAWAII, 2008

Duplicated Count of Perpetrators: Age Group by Sex



CHILD ABUSE AND NEGLECT IN HAWAII, 2008

Relationship of Perpetrator to Confirmed Victim



CHILD ABUSE AND NEGLECT IN HAWAII, 2008

UNDUPLICATED PERPETRATORS FOR CONFIRMED VICTIMS*

| AGE | Number | Percent |
|-------------------|---------------|----------------|
| Under 20 years | 65 | 4.3 |
| 20-29 years | 492 | 32.5 |
| 30-39 years | 504 | 33.3 |
| 40-49 years | 279 | 18.4 |
| 50 years and over | 109 | 7.2 |
| Unknown | 67 | 4.4 |
| TOTAL | 1,516 | 100.0 |

| SEX | Number | Percent |
|--------------------|---------------|----------------|
| Male | 666 | 43.9 |
| Female | 839 | 55.3 |
| Unknown or missing | 11 | 0.7 |
| TOTAL | 1,516 | 100.0 |

* A perpetrator was counted only once regardless of how many times he/she was associated with a child victim.

CHILD ABUSE AND NEGLECT IN HAWAII, 2004-2008
PERPETRATORS OF CONFIRMED VICTIMS
Duplicated Count of Perpetrators*

| RELATIONSHIP TO VICTIM | 2004 | 2005 | 2006 | 2007 | 2008 |
|---|--------------|--------------|--------------|--------------|--------------|
| Parent | 4,244 | 3,417 | 2,588 | 2,752 | 2,531 |
| Other relative | 233 | 176 | 83 | 94 | 87 |
| Foster parent | 62 | | | | |
| Relative foster parent | | 58 | 6 | 7 | 4 |
| NonRelative Foster parent | | 21 | 26 | 18 | 18 |
| Group home/Residential facility staff | 1 | 2 | 3 | 2 | 0 |
| Legal guardian | 53 | 102 | 56 | 46 | 41 |
| Foster parent, relationship unspecified | | | 2 | 0 | 0 |
| Other | 312 | 210 | 151 | 157 | 110 |
| Unknown/missing | 48 | 37 | 16 | 10 | 19 |
| TOTAL | 4,953 | 4,023 | 2,931 | 3,086 | 2,810 |

| PERPETRATOR AGE | 2004 | 2005 | 2006 | 2007 | 2008 |
|------------------------|--------------|--------------|--------------|--------------|--------------|
| Under 20 Years | 199 | 131 | 66 | 69 | 79 |
| 20 - 29 Years | 1,500 | 1,336 | 921 | 947 | 908 |
| 30 - 39 Years | 1,988 | 1,478 | 1,111 | 1,200 | 1068 |
| 40 - 49 Years | 814 | 732 | 521 | 503 | 480 |
| 50 Years or Older | 331 | 262 | 236 | 232 | 172 |
| Unknown | 121 | 84 | 76 | 135 | 103 |
| TOTAL | 4,953 | 4,023 | 2,931 | 3,086 | 2,810 |

| PERPETRATOR SEX | 2004 | 2005 | 2006 | 2007 | 2008 |
|------------------------|--------------|--------------|--------------|--------------|--------------|
| Male | 2199 | 1,698 | 1,263 | 1,381 | 1,249 |
| Female | 2738 | 2,316 | 1,647 | 1,692 | 1,540 |
| Unknown | 16 | 9 | 21 | 13 | 21 |
| TOTAL | 4,953 | 4,023 | 2,931 | 3,086 | 2,810 |

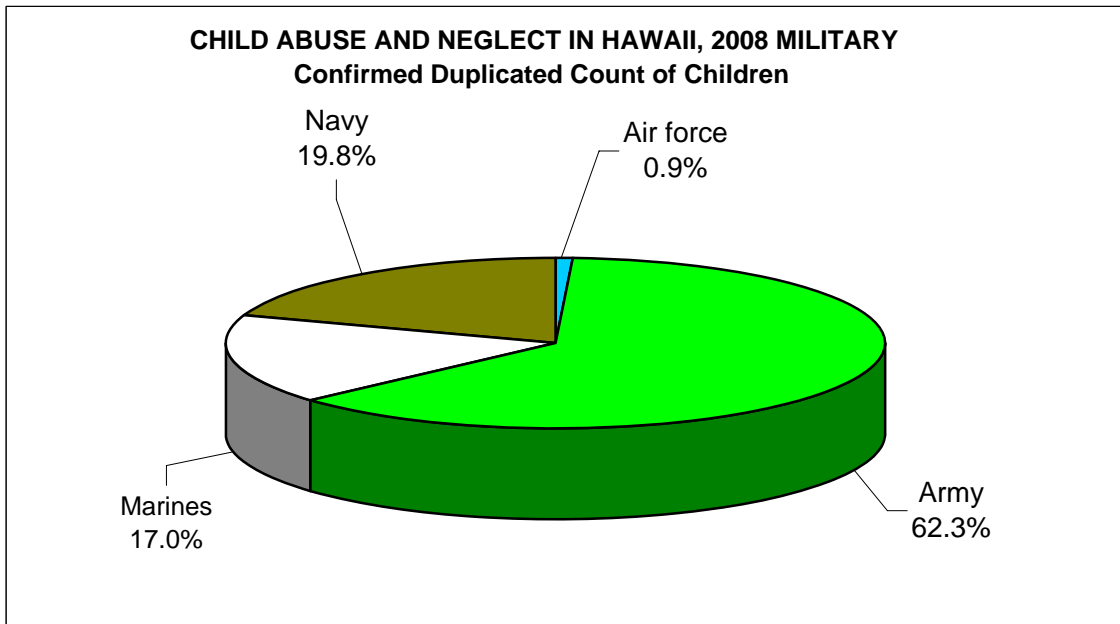
*A perpetrator was counted each time that he/she was associated with a child victim, therefore one perpetrator may have been counted more than once. For example, if an intake had 2 confirmed victims and 2 perpetrators, then the count of perpetrators would be 4.

CHILD ABUSE AND NEGLECT IN HAWAII, 2004-2008 MILITARY

DUPLICATED COUNT OF CHILDREN

| Military Branch | REPORTED | | | | | CONFIRMED | | | | |
|--------------------|------------|------------|------------|------------|------------|------------|-----------|-----------|-----------|------------|
| | 2004 | 2005 | 2006 | 2007 | 2008 | 2004 | 2005 | 2006 | 2007 | 2008 |
| Air force | 10 | 7 | 15 | 5 | 6 | 5 | 5 | 5 | 2 | 1 |
| Army | 117 | 106 | 93 | 123 | 141 | 77 | 58 | 46 | 59 | 66 |
| Coast Guard | 3 | 6 | 5 | 3 | 0 | 1 | 2 | 2 | 2 | 0 |
| Marines | 21 | 24 | 22 | 19 | 32 | 10 | 6 | 7 | 3 | 18 |
| Navy | 62 | 61 | 52 | 26 | 44 | 27 | 26 | 26 | 11 | 21 |
| National Guard | 1 | 0 | 0 | 0 | 0 | 1 | 0 | 0 | 0 | 0 |
| State Total | 214 | 204 | 187 | 176 | 223 | 121 | 97 | 86 | 77 | 106 |

| Military Rank | 2004 | 2005 | 2006 | 2007 | 2008 | 2004 | 2005 | 2006 | 2007 | 2008 |
|--------------------|------------|------------|------------|------------|------------|------------|-----------|-----------|-----------|------------|
| Unspecified | 72 | 97 | 73 | 43 | 51 | 44 | 49 | 32 | 21 | 18 |
| Enlisted | 129 | 95 | 100 | 123 | 157 | 70 | 42 | 53 | 52 | 80 |
| Non-Commissioned | 11 | 11 | 7 | 5 | 14 | 7 | 5 | 1 | 4 | 8 |
| Officer | 2 | 1 | 7 | 5 | 1 | 0 | 1 | 0 | 0 | 0 |
| State Total | 214 | 204 | 187 | 176 | 223 | 121 | 97 | 86 | 77 | 106 |



**CHILD ABUSE AND NEGLECT IN HAWAII, 2008
MILITARY**

ABUSE AND NEGLECT TYPES PER CHILD

| Total Reported | DUPLICATED COUNT OF TYPES* | | | | | UNDUPLICATED COUNT OF TYPES** | | | | |
|-----------------------|-----------------------------------|-------------|--------------|-------------|--------------|--------------------------------------|-------------|--------------|-------------|--------------|
| | HAWAII | OAHU | KAUAI | MAUI | TOTAL | HAWAII | OAHU | KAUAI | MAUI | TOTAL |
| Physical Abuse | 0 | 68 | 0 | 0 | 68 | 0 | 68 | 0 | 0 | 68 |
| Neglect | 0 | 48 | 0 | 0 | 48 | 0 | 46 | 0 | 0 | 46 |
| Medical Neglect | 0 | 12 | 0 | 0 | 12 | 0 | 12 | 0 | 0 | 12 |
| Sexual Abuse | 0 | 18 | 0 | 0 | 18 | 0 | 18 | 0 | 0 | 18 |
| Psychological Abuse | 0 | 4 | 0 | 0 | 4 | 0 | 4 | 0 | 0 | 4 |
| Threatened Harm | 1 | 201 | 0 | 1 | 203 | 1 | 193 | 0 | 1 | 195 |
| Total | 1 | 351 | 0 | 1 | 353 | 1 | 341 | 0 | 1 | 343 |

Confirmed

| | | | | | | | | | | |
|---------------------|----------|------------|----------|----------|------------|----------|------------|----------|----------|------------|
| Physical Abuse | 0 | 22 | 0 | 0 | 22 | 0 | 22 | 0 | 0 | 22 |
| Neglect | 0 | 23 | 0 | 0 | 23 | 0 | 23 | 0 | 0 | 23 |
| Medical Neglect | 0 | 6 | 0 | 0 | 6 | 0 | 6 | 0 | 0 | 6 |
| Sexual Abuse | 0 | 7 | 0 | 0 | 7 | 0 | 7 | 0 | 0 | 7 |
| Psychological Abuse | 0 | 1 | 0 | 0 | 1 | 0 | 1 | 0 | 0 | 1 |
| Threatened Harm | 0 | 91 | 0 | 1 | 92 | 0 | 90 | 0 | 1 | 91 |
| Total | 0 | 150 | 0 | 1 | 151 | 0 | 149 | 0 | 1 | 150 |

Confirmation Rate by Type

| | | | | | | | | | | |
|---------------------|-----------|------------|-----------|-----------|------------|-----------|------------|-----------|-----------|------------|
| Physical Abuse | 0% | 32% | 0% | 0% | 32% | 0% | 32% | 0% | 0% | 32% |
| Neglect | 0% | 48% | 0% | 0% | 48% | 0% | 50% | 0% | 0% | 50% |
| Medical Neglect | 0% | 50% | 0% | 0% | 50% | 0% | 50% | 0% | 0% | 50% |
| Sexual Abuse | 0% | 39% | 0% | 0% | 39% | 0% | 39% | 0% | 0% | 39% |
| Psychological Abuse | 0% | 0% | 0% | 0% | 0% | 0% | 0% | 0% | 0% | 0% |
| Threatened Harm | 0% | 45% | 0% | 0% | 45% | 0% | 47% | 0% | 0% | 47% |
| Total | 0% | 43% | 0% | 0% | 43% | 0% | 44% | 0% | 0% | 44% |

* A child may have more than one type of abuse/neglect per report and may have been reported more than once within the reporting period. Therefore, the sum of the abuse/neglect types exceeds the count of children.

** A child may have more than one type of abuse/neglect per report and may have been reported more than once within the reporting period, but the same maltreatment was counted only once. Therefore, the sum of the abuse/neglect types exceeds the count of children.

CHILD ABUSE AND NEGLECT IN HAWAII, 2004- 2008
MILITARY
Duplicated Count of Children by Source of Initial Reporter

| SOURCE | REPORTED | | | | | CONFIRMED | | | | |
|--|------------|------------|------------|------------|------------|------------|-----------|-----------|-----------|------------|
| | 2004 | 2005 | 2006 | 2007 | 2008 | 2004 | 2005 | 2006 | 2007 | 2008 |
| MANDATED REPORTERS | | | | | | | | | | |
| Social services personnel | 46 | 20 | 20 | 14 | 46 | 25 | 14 | 13 | 5 | 16 |
| Medical personnel | 24 | 47 | 46 | 33 | 33 | 12 | 22 | 19 | 13 | 19 |
| Mental health personnel | 2 | 4 | 1 | 15 | 0 | 1 | 4 | 0 | 10 | 0 |
| Legal, law enforcement, or criminal justice personnel | 71 | 58 | 55 | 44 | 75 | 53 | 33 | 30 | 22 | 44 |
| Education personnel | 21 | 14 | 15 | 25 | 36 | 7 | 2 | 8 | 7 | 8 |
| Child day care provider | 3 | 2 | 1 | 0 | 4 | 0 | 0 | 0 | 0 | 2 |
| Substitute/Foster care provider | 1 | 0 | 0 | 0 | 0 | 1 | 0 | 0 | 0 | 0 |
| Total Mandatory Reporters | 168 | 145 | 138 | 131 | 194 | 99 | 75 | 70 | 57 | 89 |
| OTHER REPORTERS | | | | | | | | | | |
| Alleged victim | 0 | 0 | 0 | 0 | 0 | 0 | 0 | 0 | 0 | 0 |
| Parent | 7 | 10 | 2 | 3 | 1 | 6 | 5 | 1 | 1 | 0 |
| Other relative | 1 | 5 | 7 | 6 | 4 | 1 | 5 | 2 | 4 | 2 |
| Friends/neighbor | 12 | 20 | 13 | 10 | 9 | 4 | 4 | 2 | 5 | 6 |
| Perpetrator | 0 | 0 | 0 | 0 | 0 | 0 | 0 | 0 | 0 | 0 |
| Anonymous | 9 | 6 | 6 | 3 | 5 | 8 | 0 | 4 | 0 | 5 |
| Other | 17 | 10 | 2 | 7 | 3 | 3 | 2 | 1 | 4 | 0 |
| Unknown | 0 | 8 | 19 | 16 | 7 | 0 | 6 | 6 | 6 | 4 |
| Total Other Reporters | 46 | 59 | 49 | 45 | 29 | 22 | 22 | 16 | 20 | 17 |
| STATE TOTAL | 214 | 204 | 187 | 176 | 223 | 121 | 97 | 86 | 77 | 106 |

CHILD ABUSE AND NEGLECT IN HAWAII, 2004-2008
MILITARY

CONFIRMED DUPLICATED COUNT OF CHILDREN: AGE AND SEX

| AGE | 2004 | 2005 | 2006 | 2007 | 2008 |
|--------------------|-------------|-------------|-------------|-------------|-------------|
| Less Than One Year | 17 | 22 | 19 | 14 | 24 |
| 1 Year | 10 | 14 | 7 | 8 | 6 |
| 2 Years | 12 | 12 | 9 | 5 | 15 |
| 3 Years | 8 | 4 | 5 | 4 | 9 |
| 4 Years | 9 | 4 | 6 | 7 | 9 |
| 5 Years | 9 | 10 | 6 | 5 | 6 |
| 6 Years | 11 | 4 | 6 | 4 | 4 |
| 7 Years | 7 | 6 | 3 | 5 | 8 |
| 8 Years | 7 | 2 | 4 | 4 | 4 |
| 9 Years | 7 | 5 | 3 | 4 | 5 |
| 10 Years | 5 | 3 | 3 | 1 | 2 |
| 11 Years | 3 | 2 | 1 | 3 | 3 |
| 12 Years | 4 | 4 | 2 | 3 | 3 |
| 13 Years | 2 | 0 | 3 | 4 | 2 |
| 14 Years | 4 | 1 | 1 | 2 | 1 |
| 15 Years | 2 | 0 | 1 | 3 | 3 |
| 16 Years | 3 | 0 | 1 | 1 | 1 |
| 17 Years | 1 | 2 | 3 | 0 | 1 |
| Unspecified | 0 | 2 | 3 | 0 | 0 |
| | 121 | 97 | 86 | 77 | 106 |
| | | | | | |
| SEX | 2004 | 2005 | 2006 | 2007 | 2008 |
| Male | 57 | 50 | 42 | 42 | 42 |
| Female | 64 | 46 | 44 | 35 | 60 |
| Unspecified | 0 | 1 | 0 | 0 | 4 |
| | | | | | |
| STATE TOTAL | 121 | 97 | 86 | 77 | 106 |

CHILD ABUSE AND NEGLECT IN HAWAII, 2004-2008
MILITARY

CONFIRMED DUPLICATED COUNT OF CHILDREN: RACE AND SEVERITY

| RACE | 2004 | 2005 | 2006 | 2007 | 2008 |
|------------------------|-------------|-------------|-------------|-------------|-------------|
| White | 43 | 29 | 30 | 20 | 49 |
| Black | 34 | 24 | 12 | 6 | 13 |
| Mixed | 16 | 16 | 6 | 28 | 15 |
| Filipino | 5 | 4 | 3 | 0 | 1 |
| Hawaiian/Part Hawaiian | 3 | 10 | 10 | 6 | 6 |
| Japanese | 1 | 0 | 0 | 0 | 1 |
| Mexican | 0 | 0 | 0 | 0 | 0 |
| Korean | 0 | 0 | 0 | 0 | 0 |
| Cambodian | 0 | 0 | 0 | 0 | 0 |
| Chinese | 1 | 0 | 0 | 0 | 0 |
| Puerto Rican | 0 | 0 | 0 | 0 | 0 |
| Other pacific islander | 0 | 0 | 1 | 1 | 0 |
| Samoan | 0 | 0 | 1 | 0 | 0 |
| Vietnamese | 0 | 0 | 0 | 0 | 0 |
| American Indian | 8 | 0 | 1 | 3 | 4 |
| Hispanic/Spanish | 5 | 3 | 10 | 6 | 8 |
| Other | 0 | 0 | 0 | 0 | 0 |
| Unable to determine | 1 | 0 | 4 | 0 | 2 |
| Unknown | 4 | 11 | 8 | 7 | 7 |
| STATE TOTAL | 121 | 97 | 86 | 77 | 106 |

| SEVERITY | 2004 | 2005 | 2006 | 2007 | 2008 |
|----------------------|-------------|-------------|-------------|-------------|-------------|
| Fatal | 0 | 0 | 1 | 0 | 0 |
| Permanent Disability | 0 | 0 | 0 | 0 | 0 |
| Serious | 4 | 5 | 1 | 0 | 2 |
| Treatment | 7 | 9 | 4 | 18 | 15 |
| No Treatment | 64 | 60 | 47 | 29 | 55 |
| No Injury | 46 | 23 | 33 | 30 | 34 |
| Unspecified | 0 | 0 | 0 | 0 | 0 |
| STATE TOTAL | 121 | 97 | 86 | 77 | 106 |