

*A Statistical Report on*

**CHILD ABUSE AND NEGLECT  
IN HAWAII**

**2010**

**Prepared by**

**State of Hawaii  
Department of Human Services  
Management Services Office**

## TABLE OF CONTENTS

### LIST OF TABLES

Summary	1
Duplicated Count of Children by County: Reported and Confirmed, 2006 - 2010	4
Abuse and Neglect Types By County, Duplicated Count of Types for Each Child	5
Abuse and Neglect Types By County, Unduplicated Count of Types for Each Child	6
Unduplicated Count of Children by County District	7
Duplicated Count of Children by County Districts, 2006 - 2010	8
Duplicated Count of Children by Source of Initial Reporter, 2006 - 2010	9
Age of Confirmed Duplicated Count of Children, 2006 - 2010	11
Sex of Confirmed Duplicated Count of Children, 2006 - 2010	11
Race of Confirmed Duplicated Count of Children, 2006 - 2010	12
Severity of Harm of Confirmed Duplicated Count of Children, 2006 - 2010	12
Age, Sex, and Race of Confirmed Unduplicated Children	13
Recurrence Rate	14
Perpetrators of Confirmed Victims: Age and Sex	17
Perpetrator Relationship to Victim, 2006 - 2010	18
Age of Perpetrator, 2006 - 2010	18
Sex of Perpetrator, 2006 - 2010	18

### LIST OF FIGURES

Duplicated Count of Children, 2006 - 2010	2
Percentage of Duplicated Count of Children by County	3
Duplicated Count of Children by County: Reported and Confirmed, 2006 - 2010	4
Duplicated Count of Children by Source of Initial Reporter	10
Age and Sex of Perpetrators of Confirmed Duplicated Count of Children	15
Perpetrator Relationship to Victim	16

### MILITARY

Duplicated Count of Children by Military Branch and Rank, 2006 - 2010	19
Abuse and Neglect Types, Duplicated and Unduplicated Count of Types	20
Duplicated Count of Children by Source of Initial Reporter, 2006 - 2010	21
Age of Confirmed Duplicated Count of Children, 2006 - 2010	22
Sex of Confirmed Duplicated Count of Children, 2006 - 2010	22
Race of Confirmed Duplicated Count of Children, 2006 - 2010	23
Severity of Harm of Confirmed Duplicated Count of Children, 2006 - 2010	23

## CHILD ABUSE AND NEGLECT IN HAWAII, 2010 SUMMARY

	HAWAII	OAHU	KAUAI	MAUI	TOTAL
<b>INTAKES</b>					
Confirmed	174	504	50	140	868
Not Confirmed	243	808	95	184	1,330
Total Reported	417	1,312	145	324	2,198
Percent Confirmed	42%	38%	34%	43%	39%
 <b>DUPLICATED COUNT OF CHILDREN</b>					
Confirmed	321	898	82	274	1,575
Not Confirmed	472	1,614	189	349	2,624
Total Reported	793	2,512	271	623	4,199
Percent Confirmed	40%	36%	30%	44%	38%
 <b>UNDUPLICATED COUNT OF CHILDREN</b>					
Confirmed	304	875	81	263	1,523
Not Confirmed	439	1,500	184	312	2,435
Total Reported	743	2,375	265	575	3,958
Percent Confirmed	41%	37%	31%	46%	38%

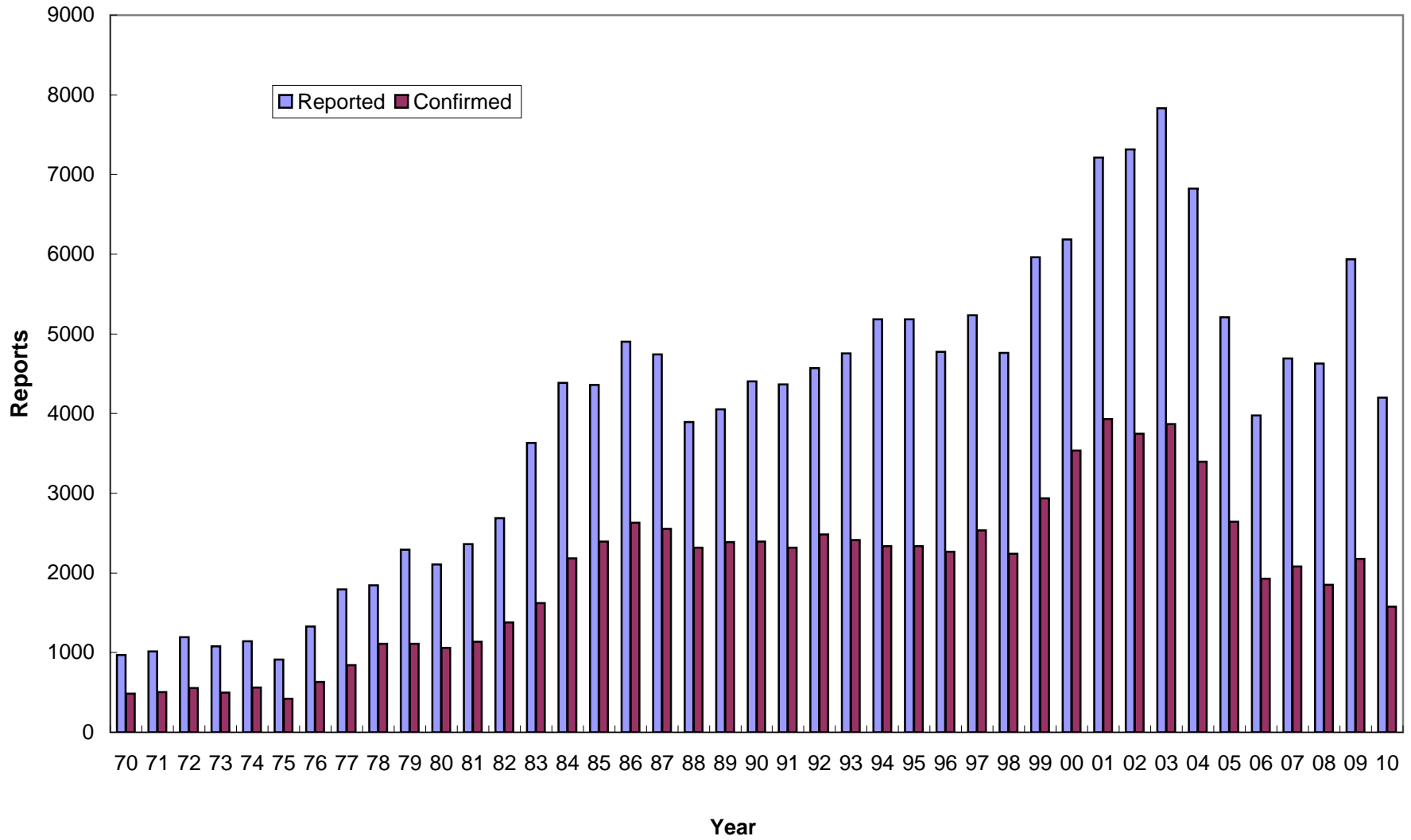
**Intakes:** reports accepted for investigation.

**Duplicated count:** counted by reports, a child is counted each time that he/she was found to be a victim.

**Unduplicated count:** counted by child, a child is counted only once during the reporting period, regardless of how many times the child was reported.

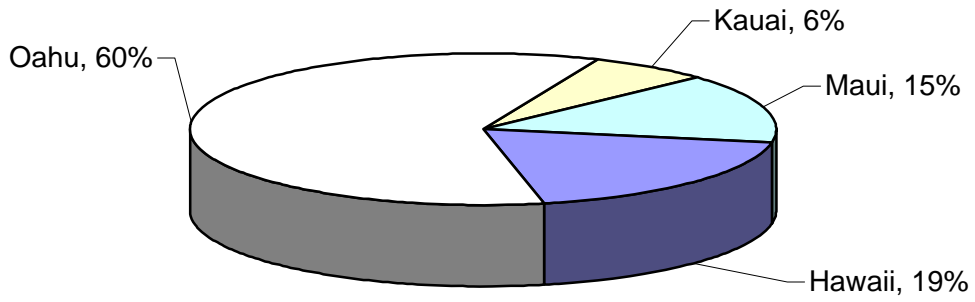
**Note:** In this report, data from 1999 and before were based on report date, data from 2000 and after were based on disposition date.

### CHILD ABUSE AND NEGLECT IN HAWAII, 1970-2010 Duplicated Count of Children

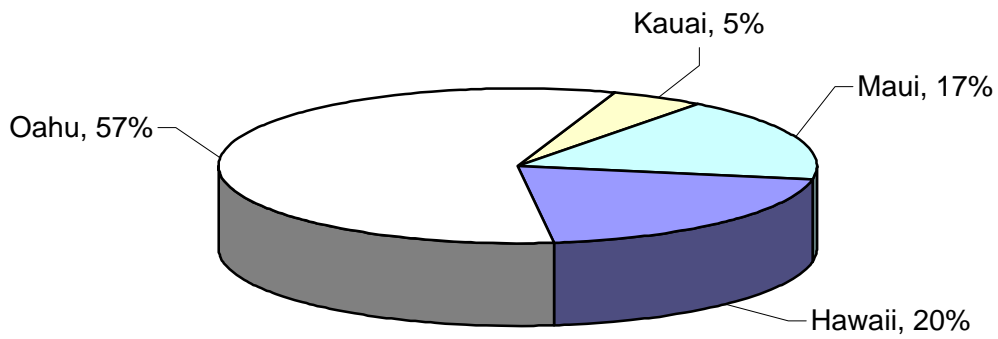


# CHILD ABUSE AND NEGLECT IN HAWAII, 2010

## Total Count of Children



## Total Count of Children

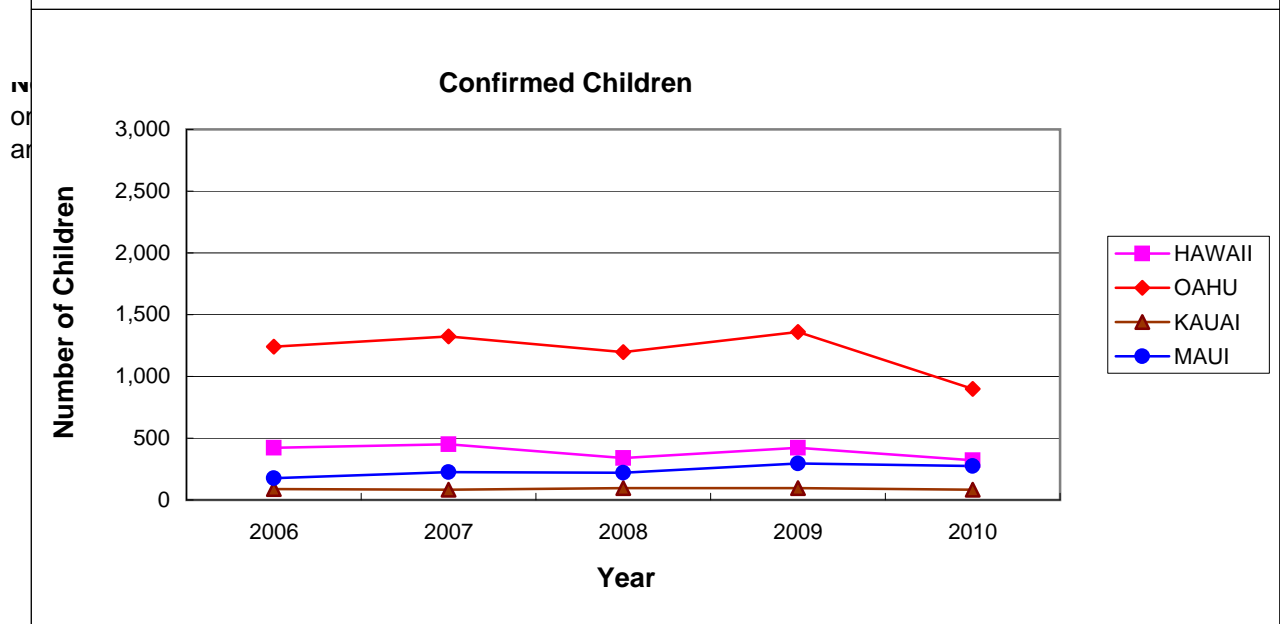
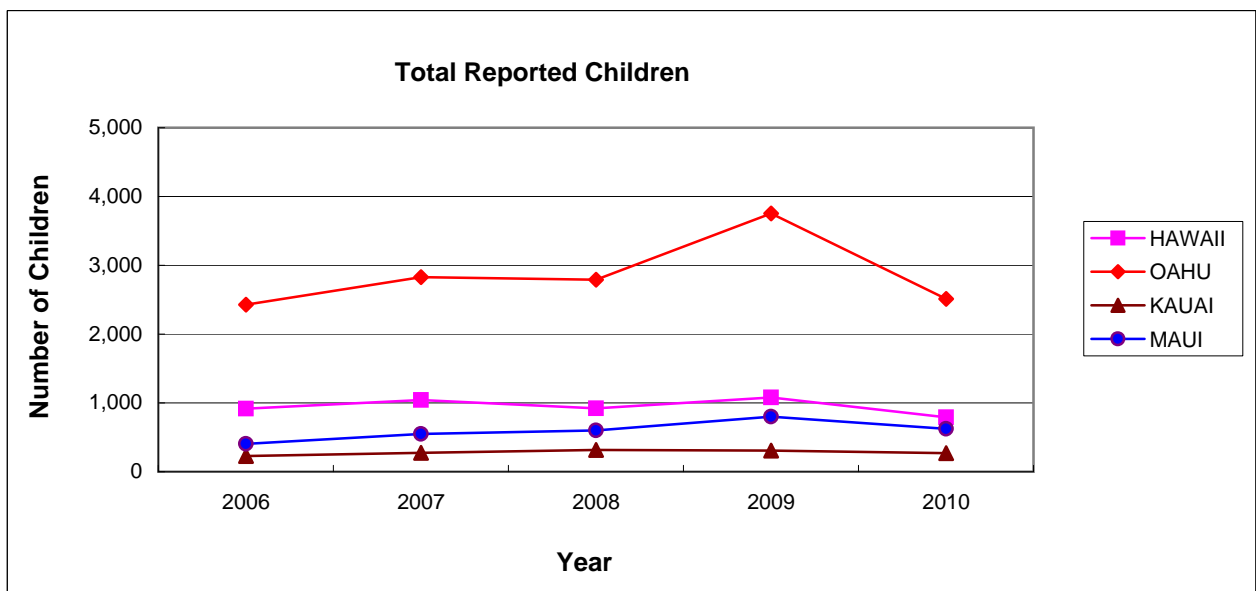


## Count of Confirmed Children

## CHILD ABUSE AND NEGLECT IN HAWAII, 2006-2010

### Duplicated Count of Children by County

DISTRICT	REPORTED					CONFIRMED				
	2006	2007	2008	2009	2010	2006	2007	2008	2009	2010
<b>HAWAII</b>	914	1,040	922	1,081	793	422	450	339	422	321
<b>OAHU</b>	2,429	2,826	2,790	3,753	2,512	1,242	1,324	1,196	1,360	898
<b>KAUAI</b>	226	274	316	305	271	87	82	95	96	82
<b>MAUI</b>	405	550	600	800	623	177	226	220	296	274
<b>STATE</b>	<b>3,974</b>	<b>4,690</b>	<b>4,628</b>	<b>5,939</b>	<b>4,199</b>	<b>1,928</b>	<b>2,082</b>	<b>1,850</b>	<b>2,174</b>	<b>1,575</b>



## CHILD ABUSE AND NEGLECT IN HAWAII, 2010

### ABUSE AND NEGLECT TYPES BY COUNTY

#### DUPLICATED COUNT OF TYPES FOR EACH CHILD\*

<b>Total Reported:</b>	<b>HAWAII</b>	<b>OAHU</b>	<b>KAUAI</b>	<b>MAUI</b>	<b>Total</b>
Physical Abuse	157	442	32	85	716
Neglect	141	373	47	78	639
Medical Neglect	9	49	4	13	75
Sexual Abuse	59	132	20	52	263
Psychological Abuse	6	16	6	10	38
Threatened Harm	756	2,428	259	604	4,047
<b>Total</b>	<b>1,128</b>	<b>3,440</b>	<b>368</b>	<b>842</b>	<b>5,778</b>

#### **Confirmed:**

Physical Abuse	38	117	9	23	187
Neglect	43	117	11	18	189
Medical Neglect	2	16	0	3	21
Sexual Abuse	25	47	9	13	94
Psychological Abuse	0	2	1	4	7
Threatened Harm	301	834	74	259	1,468
<b>Total</b>	<b>409</b>	<b>1,133</b>	<b>104</b>	<b>320</b>	<b>1,966</b>

#### **Confirmation Rate by Type**

Physical Abuse	24%	26%	28%	27%	26%
Neglect	30%	31%	23%	23%	30%
Medical Neglect	22%	33%	0%	23%	28%
Sexual Abuse	42%	36%	45%	25%	36%
Psychological Abuse	0%	13%	17%	40%	18%
Threatened Harm	40%	34%	29%	43%	36%
<b>Total</b>	<b>36%</b>	<b>33%</b>	<b>28%</b>	<b>38%</b>	<b>34%</b>

\* A child may have more than one type of abuse/neglect per report and may have been reported more than once within the reporting period. Therefore, the sum of the abuse/neglect types exceeds the count of children.

## CHILD ABUSE AND NEGLECT IN HAWAII, 2010

### ABUSE AND NEGLECT TYPES BY COUNTY

#### UNDUPLICATED COUNT OF TYPES FOR EACH CHILD\*

#### Total Reported:

	HAWAII	OAHU	KAUAI	MAUI	Total
Physical Abuse	153	432	32	82	699
Neglect	140	368	45	76	629
Medical Neglect	9	49	4	13	75
Sexual Abuse	59	132	20	51	262
Psychological Abuse	6	16	6	10	38
Threatened Harm	707	2,310	254	556	3,827
<b>Total</b>	<b>1,074</b>	<b>3,307</b>	<b>361</b>	<b>788</b>	<b>5,530</b>

#### Confirmed:

Physical Abuse	38	115	9	23	185
Neglect	43	117	11	18	189
Medical Neglect	2	16	0	3	21
Sexual Abuse	25	47	9	13	94
Psychological Abuse	0	2	1	4	7
Threatened Harm	284	814	74	248	1,420
<b>Total</b>	<b>392</b>	<b>1,111</b>	<b>104</b>	<b>309</b>	<b>1,916</b>

#### Confirmation Rate by Type

Physical Abuse	25%	27%	28%	28%	26%
Neglect	31%	32%	24%	24%	30%
Medical Neglect	22%	33%	0%	23%	28%
Sexual Abuse	42%	36%	45%	25%	36%
Psychological Abuse	0%	13%	17%	40%	18%
Threatened Harm	40%	35%	29%	45%	37%
<b>Total</b>	<b>36%</b>	<b>34%</b>	<b>29%</b>	<b>39%</b>	<b>35%</b>

\* A child may have more than one type of abuse/neglect per report and may have been reported more than once within the reporting period, but the same maltreatment was counted only once . Therefore, the sum of the abuse/neglect types exceeds the count of children.



## CHILD ABUSE AND NEGLECT IN HAWAII, 2010

### NUMBER OF UNDUPLICATED CHILDREN BY DISTRICT

	CONFIRMED	NOT CONFIRMED	TOTAL
<b>HAWAII</b>			
N. Hilo	7	3	10
S. Hilo	73	156	229
Puna	96	132	228
Kau	6	2	8
S. Kona	10	6	16
N. Kona	11	19	30
S. Kohala	7	1	8
N. Kohala	3	5	8
Hamakua	4	8	12
Unspecified	87	107	194
<b>Total</b>	<b>304</b>	<b>439</b>	<b>743</b>
<b>OAHU</b>			
Honolulu	256	402	658
Ewa	201	467	668
Wahiawa	80	129	209
Waianae	161	194	355
Waialua	23	21	44
Koolauloa	20	19	39
Koolaupoko	93	162	255
Unspecified	41	106	147
<b>Total</b>	<b>875</b>	<b>1,500</b>	<b>2,375</b>
<b>KAUAI</b>			
Lihue	15	26	41
Koloa	9	28	37
Waimea	4	8	12
Hanalei	3	9	12
Kawaihau	14	32	46
Unspecified	36	81	117
<b>Total</b>	<b>81</b>	<b>184</b>	<b>265</b>
<b>MAUI</b>			
Lahaina	16	12	28
Wailuku	119	102	221
Makawao	38	56	94
Hana	2	2	4
Molokai	15	8	23
Lanai	8	3	11
Unspecified	65	129	194
<b>Total</b>	<b>263</b>	<b>312</b>	<b>575</b>
<b>STATE TOTAL</b>	<b>1,523</b>	<b>2,435</b>	<b>3,958</b>

## CHILD ABUSE AND NEGLECT IN HAWAII, 2006-2010

### Duplicated Count of Children by County District

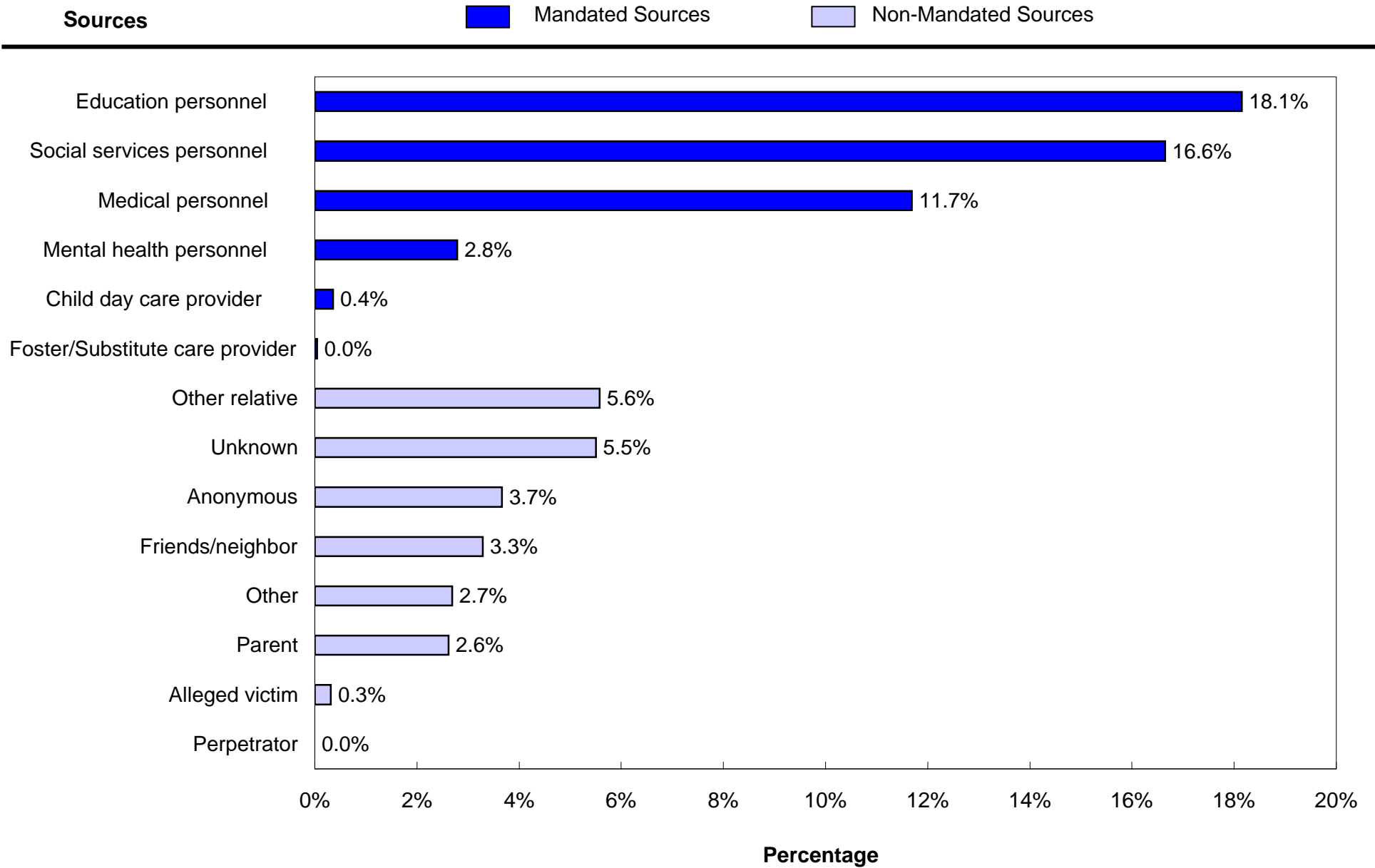
DISTRICT	REPORTED					CONFIRMED				
	2006	2007	2008	2009	2010	2006	2007	2008	2009	2010
<b>HAWAII COUNTY</b>	<b>914</b>	<b>1,040</b>	<b>922</b>	<b>1,081</b>	<b>793</b>	<b>422</b>	<b>450</b>	<b>339</b>	<b>422</b>	<b>321</b>
N. Hilo	4	3	0	2	10	0	1	0	2	7
S. Hilo	157	167	168	236	240	86	67	66	86	74
Puna	181	177	143	248	246	79	45	51	100	105
Kau	26	32	26	31	12	21	25	14	25	10
S. Kona	25	16	11	30	20	8	12	4	12	10
N. Kona	45	41	63	56	32	23	17	18	21	11
S. Kohala	42	44	11	29	8	15	26	7	10	7
N. Kohala	16	7	11	6	8	4	3	3	0	3
Hamakua	14	7	10	24	14	3	2	1	5	4
Unspecified	404	546	479	419	203	183	252	175	161	90
<b>OAHU</b>	<b>2,429</b>	<b>2,826</b>	<b>2,790</b>	<b>3,753</b>	<b>2,512</b>	<b>1,242</b>	<b>1,324</b>	<b>1,196</b>	<b>1,360</b>	<b>898</b>
Honolulu	634	740	735	1,022	700	302	336	293	348	267
Ewa	665	809	748	1,051	697	336	377	314	367	206
Wahiawa	193	200	191	368	227	103	108	103	146	81
Waianae	466	505	500	556	374	283	248	224	239	162
Waialua	43	45	24	67	52	22	19	9	15	24
Koolauloa	44	51	70	75	39	21	25	37	29	20
Koolaupoko	246	284	368	449	274	108	109	152	154	96
Unspecified	138	192	154	165	149	67	102	64	62	42
<b>KAUAI COUNTY</b>	<b>226</b>	<b>274</b>	<b>316</b>	<b>305</b>	<b>271</b>	<b>87</b>	<b>82</b>	<b>95</b>	<b>96</b>	<b>82</b>
Lihue	47	60	70	60	43	17	19	20	18	15
Koloa	30	34	33	28	40	6	7	6	10	10
Waimea	30	26	52	45	12	2	6	15	8	4
Hanalei	19	15	24	9	12	8	3	13	1	3
Kawaihau	62	76	68	59	47	34	30	19	26	14
Unspecified	38	63	69	104	117	20	17	22	33	36
<b>MAUI COUNTY</b>	<b>405</b>	<b>550</b>	<b>600</b>	<b>800</b>	<b>623</b>	<b>177</b>	<b>226</b>	<b>220</b>	<b>296</b>	<b>274</b>
Lahaina	26	36	44	65	32	11	15	19	24	17
Wailuku	174	178	158	285	250	79	72	60	117	122
Makawao	70	88	133	129	97	36	45	35	50	38
Hana		1	6	2	4	0	0	4	0	2
Molokai	11	31	30	38	23	4	9	19	9	15
Lanai	1	12	25	8	11	1	8	14	7	8
Unspecified	123	204	204	273	206	46	77	69	89	72
<b>STATE TOTAL</b>	<b>3,974</b>	<b>4,690</b>	<b>4,628</b>	<b>5,939</b>	<b>4,199</b>	<b>1,928</b>	<b>2,082</b>	<b>1,850</b>	<b>2,174</b>	<b>1,575</b>

## CHILD ABUSE AND NEGLECT IN HAWAII, 2006- 2010

### Duplicated Count of Children by Source of Initial Reporter

SOURCE	REPORTED					CONFIRMED				
	2006	2007	2008	2009	2010	2006	2007	2008	2009	2010
<b>MANDATED REPORTERS</b>										
Social services personnel	419	780	821	898	699	182	359	314	387	312
Medical personnel	748	606	559	639	491	443	355	306	297	227
Mental health personnel	53	93	76	136	117	28	50	25	53	32
Legal, law enforcement, or criminal justice personnel	844	965	936	1709	1,120	492	477	445	695	445
Education personnel	681	921	919	942	762	294	333	326	281	286
Child day care provider	2	6	10	15	15	0	3	3	4	3
Foster/Substitute care provider	12	14	2	7	2	5	11	0	2	1
<b>Total Mandatory Reporters</b>	<b>2,759</b>	<b>3,385</b>	<b>3,323</b>	<b>4,346</b>	<b>3,206</b>	<b>1,444</b>	<b>1,588</b>	<b>1,419</b>	<b>1,719</b>	<b>1,306</b>
<b>OTHER REPORTERS</b>										
Alleged victim	9	21	3	12	13	9	11	2	6	1
Parent	80	124	107	167	110	41	49	22	43	42
Other relative	255	253	276	372	234	120	134	109	122	80
Friends/neighbor	155	133	159	145	138	58	30	51	30	25
Perpetrator	0	0	0	0	0	0	0	0	0	0
Anonymous	152	174	190	262	154	49	40	69	81	37
Other	161	137	140	208	113	65	66	46	61	30
Unknown	403	463	430	427	231	142	164	132	112	54
<b>Total Other Reporters</b>	<b>1,215</b>	<b>1,305</b>	<b>1,305</b>	<b>1,593</b>	<b>993</b>	<b>484</b>	<b>494</b>	<b>431</b>	<b>455</b>	<b>269</b>
<b>STATE TOTAL</b>	<b>3,974</b>	<b>4,690</b>	<b>4,628</b>	<b>5,939</b>	<b>4,199</b>	<b>1,928</b>	<b>2,082</b>	<b>1,850</b>	<b>2,174</b>	<b>1,575</b>

**CHILD ABUSE AND NEGLECT IN HAWAII, 2010**  
**Mandated and Non-Mandated Source of Initial Reporter**



**CHILD ABUSE AND NEGLECT IN HAWAII, 2006-2010  
VICTIM**

**CONFIRMED DUPLICATED COUNT OF CHILDREN**

<b>AGE</b>	<b>2006</b>	<b>2007</b>	<b>2008</b>	<b>2009</b>	<b>2010</b>
Less Than One Year	353	316	294	292	214
1 Year	117	148	130	182	96
2 Years	112	139	113	149	111
3 Years	87	126	99	125	113
4 Years	94	118	87	158	113
5 Years	121	105	99	126	86
6 Years	84	95	110	116	85
7 Years	78	103	91	105	80
8 Years	86	107	92	114	84
9 Years	78	93	93	89	73
10 Years	86	82	82	103	73
11 Years	79	84	87	97	66
12 Years	103	102	68	93	57
13 Years	92	101	75	92	75
14 Years	92	105	99	105	72
15 Years	108	100	85	86	66
16 Years	80	97	91	70	57
17 Years	65	53	54	71	51
Unknown	13	8	1	1	3
Median age	6	6	6	6	6
<b>TOTAL</b>	<b>1,928</b>	<b>2,082</b>	<b>1,850</b>	<b>2,174</b>	<b>1,575</b>
<b>SEX</b>	<b>2006</b>	<b>2007</b>	<b>2008</b>	<b>2009</b>	<b>2010</b>
Male	945	1,004	899	1,048	732
Female	976	1,071	943	1,123	839
Unknown	7	7	8	3	4
<b>TOTAL</b>	<b>1,928</b>	<b>2,082</b>	<b>1,850</b>	<b>2,174</b>	<b>1,575</b>

**CHILD ABUSE AND NEGLECT IN HAWAII, 2006-2010  
VICTIM**

**CONFIRMED DUPLICATED COUNT OF CHILDREN**

<b>RACE</b>	<b>2006</b>	<b>2007</b>	<b>2008</b>	<b>2009</b>	<b>2010</b>
Hawaiian/Part Hawaiian	728	641	662	856	613
Mixed	283	345	272	347	302
White	220	228	231	222	174
Filipino	125	148	115	169	76
Samoan	72	45	100	54	36
Black	40	29	40	45	30
Japanese	34	35	34	17	10
Korean	5	1	6	6	3
American Indian	10	11	6	17	7
Chinese	10	9	6	14	10
Other Pacific Islander	56	66	69	106	45
Hispanic/Spanish	56	55	67	88	48
Vietnamese	7	11	3	3	1
Laotian	3	0	2	3	2
Cambodian	1	1	0	1	0
Alaskan Native	0	0	0	1	0
Unable to Determine	59	97	56	50	62
Missing	219	360	181	175	156
<b>TOTAL</b>	<b>1,928</b>	<b>2,082</b>	<b>1,850</b>	<b>2,174</b>	<b>1,575</b>

<b>SEVERITY OF HARM</b>	<b>2006</b>	<b>2007</b>	<b>2008</b>	<b>2009</b>	<b>2010</b>
Fatal	5	2	1	5	0
No treatment necessary	1,020	949	828	959	725
Treatment required	217	284	212	178	156
Serious	90	53	51	44	28
Permanent disability	0	0	1	3	0
No injury	596	794	757	985	666
<b>TOTAL</b>	<b>1,928</b>	<b>2,082</b>	<b>1,850</b>	<b>2,174</b>	<b>1,575</b>

**CHILD ABUSE AND NEGLECT IN HAWAII, 2010  
VICTIM**

**CONFIRMED UNDUPLICATED COUNT OF CHILDREN\*: AGE, SEX, RACE, SEVERITY**

<b>AGE</b>	<b>Number</b>	<b>Percent</b>	<b>RACE</b>	<b>Number</b>	<b>Percent</b>
Less Than One Year	210	13.8	MISSING	155	10.2
1 Year	94	6.2	American Indian	7	0.5
2 Years	108	7.1	Black	29	1.9
3 Years	108	7.1	Chinese	9	0.6
4 Years	109	7.2	Filipino	75	4.9
5 Years	80	5.3	Hawaiian/Part Hawaiian	586	38.5
6 Years	78	5.1	Hispanic/Spanish	48	3.2
7 Years	76	5.0	Japanese	10	0.7
8 Years	81	5.3	Korean	3	0.2
9 Years	69	4.5	Laotian	2	0.1
10 Years	70	4.6	Mixed	285	18.7
11 Years	65	4.3	Other pacific islander	44	2.9
12 Years	56	3.7	Samoa	36	2.4
13 Years	73	4.8	Unable to determine	62	4.1
14 Years	69	4.5	Vietnamese	1	0.1
15 Years	66	4.3	White	171	11.2
16 Years	57	3.7			
17 Years	51	3.4			
Unknown	3	0.2			
<b>TOTAL</b>	<b>1,523</b>	<b>100.0</b>	<b>TOTAL</b>	<b>1,523</b>	<b>100.0</b>

<b>SEX</b>	<b>Number</b>	<b>Percent</b>	<b>SEVERITY OF HARM</b>	<b>Number</b>	<b>Percent</b>
Male	709	46.6	No treatment necessary	702	46.1
Female	810	53.2	Treatment required	153	10.1
Unknown or missing	4	0.3	Serious	26	1.7
			No injury	642	42.2
<b>TOTAL</b>	<b>1,523</b>	<b>100.0</b>	<b>TOTAL</b>	<b>1,523</b>	<b>100.0</b>

\*A child is only counted once, regardless of how many times he/she was reported.  
The highest severity level was selected for a child with more than one confirmed severity.

**CHILD ABUSE AND NEGLECT IN HAWAII, 2010**  
**Recurrence\***

	Frequency	Percent
<b>No Recurrence**</b>	768	97.22
<b>Recurrence***</b>	22	2.78
<b>Total</b>	<b>790</b>	<b>100.0</b>

\*Only confirmed child victims, whose report year and disposition year were both in 2010 and the initial maltreatment report date fell between January-June, 2010, were included in the recurrence rate calculation.

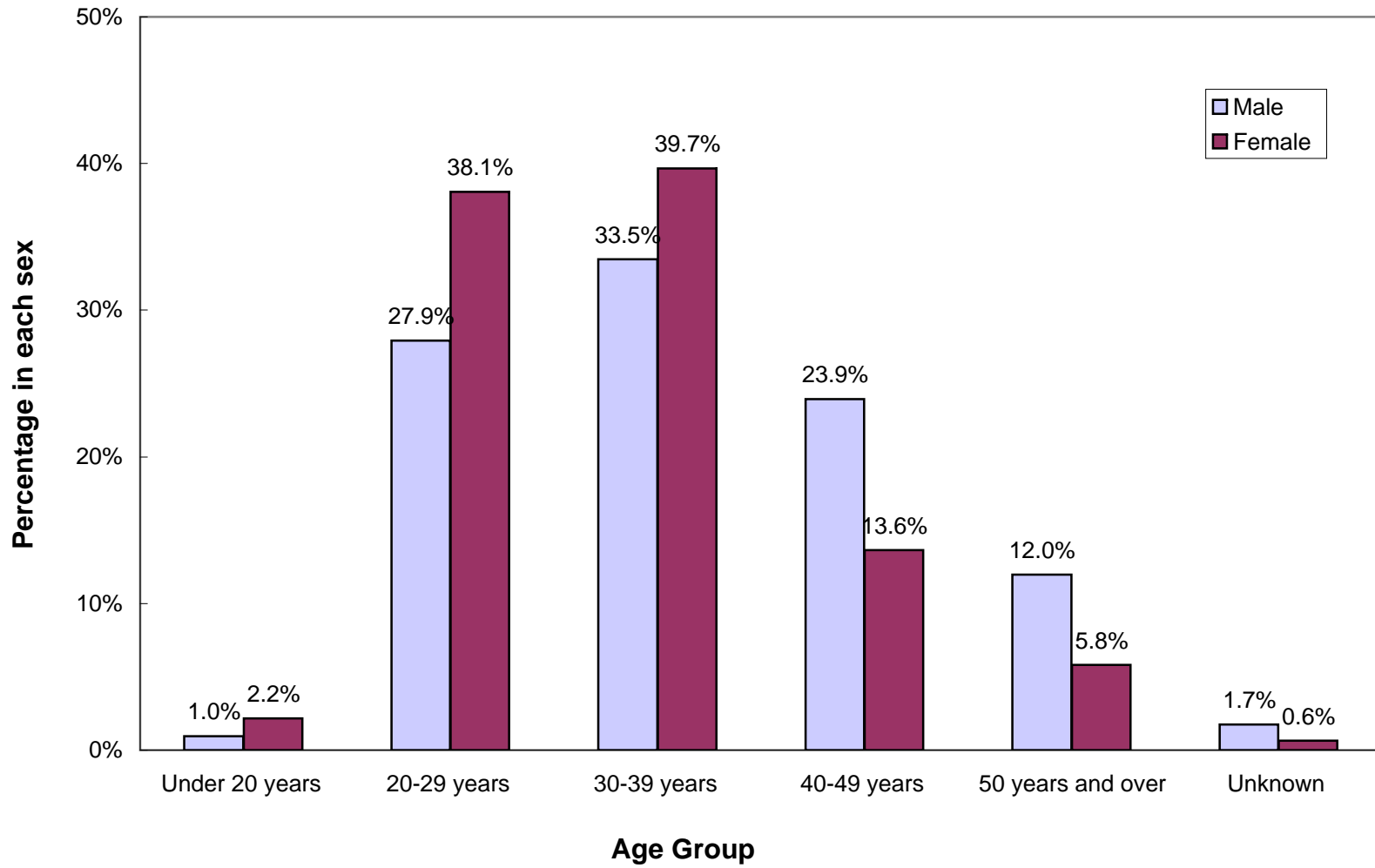
\*\*Maltreatment occurred between January and June. There was no recurrence within six months.

\*\*\*First maltreatment occurred between January and June. The second maltreatment occurred within six months.



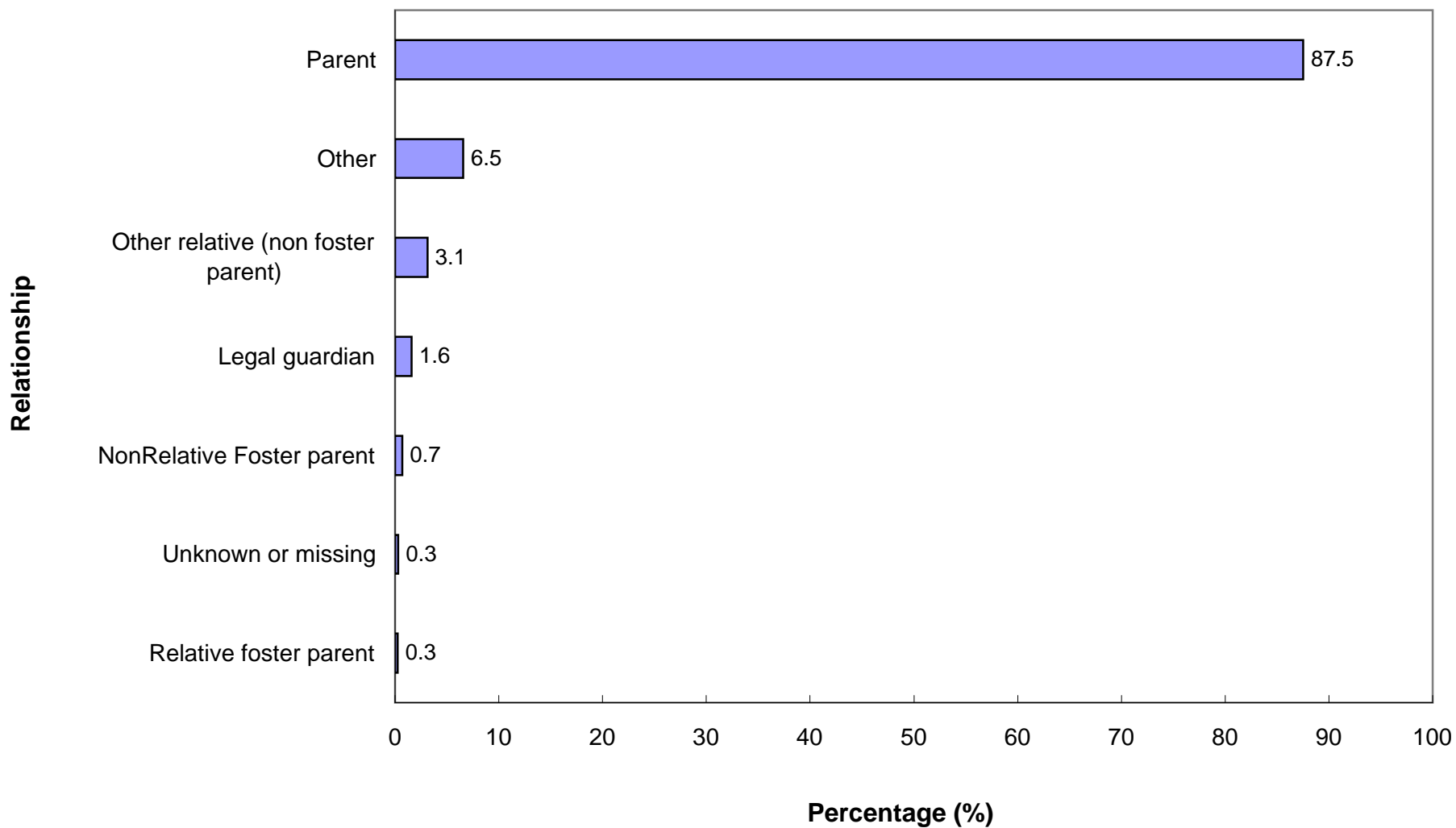
# CHILD ABUSE AND NEGLECT IN HAWAII, 2010

## Duplicated Count of Perpetrators: Age Group by Sex



# CHILD ABUSE AND NEGLECT IN HAWAII, 2010

## Relationship of Perpetrator to Confirmed Victim



## CHILD ABUSE AND NEGLECT IN HAWAII, 2010

### UNDUPLICATED PERPETRATORS FOR CONFIRMED VICTIMS\*

<b>AGE</b>	<b>Number</b>	<b>Percent</b>
Under 20 years	34	2.7
20-29 years	419	33.2
30-39 years	419	33.2
40-49 years	246	19.5
50 years and over	119	9.4
Unknown	24	1.9
<b>TOTAL</b>	<b>1,261</b>	<b>100.0</b>

<b>SEX</b>	<b>Number</b>	<b>Percent</b>
Male	606	48.1
Female	651	51.6
Unknown or missing	4	0.3
<b>TOTAL</b>	<b>1,261</b>	<b>100.0</b>

\* A perpetrator was counted only once regardless of how many times he/she was associated with a child victim.

**CHILD ABUSE AND NEGLECT IN HAWAII, 2006-2010**  
**PERPETRATORS OF CONFIRMED VICTIMS**  
**Duplicated Count of Perpetrators\***

<b>RELATIONSHIP TO VICTIM</b>	<b>2006</b>	<b>2007</b>	<b>2008</b>	<b>2009</b>	<b>2010</b>
Parent	2,588	2,752	2,531	2,922	2,101
Other relative	83	94	87	117	75
Relative foster parent	6	7	4	13	6
NonRelative Foster parent	26	18	18	13	17
Group home/Residential facility staff	3	2	0	0	0
Legal guardian	56	46	41	52	38
Other professionals	0	0	0	1	0
Foster parent, relationship unspecified	2	0	0	1	0
Other	151	157	110	160	157
Unknown/missing	16	10	19	30	7
<b>TOTAL</b>	<b>2,931</b>	<b>3,086</b>	<b>2,810</b>	<b>3,309</b>	<b>2,401</b>

<b>PERPETRATOR AGE</b>	<b>2006</b>	<b>2007</b>	<b>2008</b>	<b>2009</b>	<b>2010</b>
Under 20 Years	66	69	79	80	38
20 - 29 Years	921	947	908	1,015	795
30 - 39 Years	1,111	1,200	1068	1,286	878
40 - 49 Years	521	503	480	615	445
50 Years or Older	236	232	172	263	210
Unknown	76	135	103	50	35
<b>TOTAL</b>	<b>2,931</b>	<b>3,086</b>	<b>2,810</b>	<b>3,309</b>	<b>2,401</b>

<b>PERPETRATOR SEX</b>	<b>2006</b>	<b>2007</b>	<b>2008</b>	<b>2009</b>	<b>2010</b>
Male	1,263	1,381	1,249	1511	1,153
Female	1,647	1,692	1,540	1785	1,240
Unknown	21	13	21	13	8
<b>TOTAL</b>	<b>2,931</b>	<b>3,086</b>	<b>2,810</b>	<b>3,309</b>	<b>2,401</b>

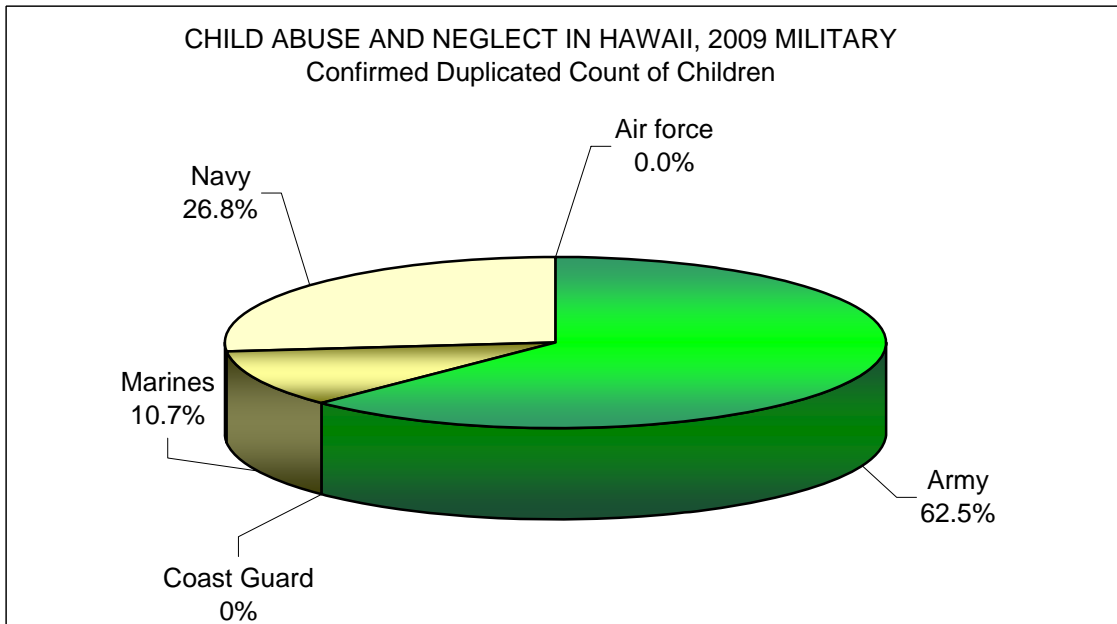
\*A perpetrator was counted each time that he/she was associated with a child victim, therefore one perpetrator may have been counted more than once. For example, if an intake had 2 confirmed victims and each victim had 2 perpetrators, then the count of perpetrators would be 4.

## CHILD ABUSE AND NEGLECT IN HAWAII, 2006-2010 MILITARY

### DUPLICATED COUNT OF CHILDREN

Military Branch	REPORTED					CONFIRMED				
	2006	2007	2008	2009	2010	2006	2007	2008	2009	2010
Air force	15	5	6	15	18	5	2	1	4	0
Army	93	123	141	201	148	46	59	66	63	35
Coast Guard	5	3	0	6	0	2	2	0	0	0
Marines	22	19	32	37	13	7	3	18	14	6
Navy	52	26	44	70	48	26	11	21	37	15
<b>State Total</b>	<b>187</b>	<b>176</b>	<b>223</b>	<b>329</b>	<b>227</b>	<b>86</b>	<b>77</b>	<b>106</b>	<b>118</b>	<b>56</b>

Military Rank	2006	2007	2008	2009	2010	2006	2007	2008	2009	2010
Unspecified	73	43	51	113	108	32	21	18	35	18
Enlisted	100	123	157	193	114	53	52	80	77	37
Non-Commissioned	7	5	14	19	5	1	4	8	6	1
Officer	7	5	1	4	0	0	0	0	0	0
<b>State Total</b>	<b>187</b>	<b>176</b>	<b>223</b>	<b>329</b>	<b>227</b>	<b>86</b>	<b>77</b>	<b>106</b>	<b>118</b>	<b>56</b>



**CHILD ABUSE AND NEGLECT IN HAWAII, 2010  
MILITARY**

**ABUSE AND NEGLECT TYPES PER CHILD**

<b>Total Reported</b>	<b>DUPLICATED COUNT OF TYPES*</b>					<b>UNDUPLICATED COUNT OF TYPES**</b>				
	<b>HAWAII</b>	<b>OAHU</b>	<b>KAUAI</b>	<b>MAUI</b>	<b>TOTAL</b>	<b>HAWAII</b>	<b>OAHU</b>	<b>KAUAI</b>	<b>MAUI</b>	<b>TOTAL</b>
Physical Abuse	0	53	0	3	56	0	52	0	3	55
Neglect	0	36	0	0	36	0	36	0	0	36
Medical Neglect	0	1	0	0	1	0	1	0	0	1
Sexual Abuse	0	14	0	0	14	0	14	0	0	14
Psychological Abuse	0	5	0	0	5	0	5	0	0	5
Threatened Harm	0	210	0	3	213	1	197	0	3	200
<b>Total</b>	<b>0</b>	<b>319</b>	<b>0</b>	<b>6</b>	<b>325</b>	<b>1</b>	<b>305</b>	<b>0</b>	<b>6</b>	<b>311</b>

**Confirmed**

Physical Abuse	0	16	0	0	16	0	16	0	0	16
Neglect	0	5	0	0	5	0	5	0	0	5
Medical Neglect	0	0	0	0	0	0	0	0	0	0
Sexual Abuse	0	4	0	0	4	0	4	0	0	4
Psychological Abuse	0	0	0	0	0	0	0	0	0	0
Threatened Harm	0	47	0	0	47	0	47	0	0	47
<b>Total</b>	<b>0</b>	<b>72</b>	<b>0</b>	<b>0</b>	<b>72</b>	<b>0</b>	<b>72</b>	<b>0</b>	<b>0</b>	<b>72</b>

**Confirmation Rate by Type**

Physical Abuse	0%	30%	0%	0%	29%	0%	31%	0%	0%	29%
Neglect	0%	14%	0%	0%	14%	0%	14%	0%	0%	14%
Medical Neglect	0%	0%	0%	0%	0%	0%	0%	0%	0%	0%
Sexual Abuse	0%	29%	0%	0%	29%	0%	29%	0%	0%	29%
Psychological Abuse	0%	0%	0%	0%	0%	0%	0%	0%	0%	0%
Threatened Harm	0%	22%	0%	0%	22%	0%	24%	0%	0%	24%
<b>Total</b>	<b>0%</b>	<b>23%</b>	<b>0%</b>	<b>0%</b>	<b>22%</b>	<b>0%</b>	<b>24%</b>	<b>0%</b>	<b>0%</b>	<b>23%</b>

\* A child may have more than one type of abuse/neglect per report and may have been reported more than once within the reporting period. Therefore, the sum of the abuse/neglect types exceeds the count of children.

\*\* A child may have more than one type of abuse/neglect per report and may have been reported more than once within the reporting period, but the same maltreatment was counted only once. Therefore, the sum of the abuse/neglect types exceeds the count of children.

**CHILD ABUSE AND NEGLECT IN HAWAII, 2006- 2010**  
**MILITARY**  
**Duplicated Count of Children by Source of Initial Reporter**

SOURCE	REPORTED					CONFIRMED				
	2006	2007	2008	2009	2010	2006	2007	2008	2009	2010
<b>MANDATED REPORTERS</b>										
Social services personnel	20	14	46	61	49	13	5	16	24	11
Medical personnel	46	33	33	36	43	19	13	19	13	13
Mental health personnel	1	15	0	7	4	0	10	0	5	1
Legal, law enforcement, or criminal justice personnel	55	44	75	99	49	30	22	44	32	12
Education personnel	15	25	36	48	34	8	7	8	17	15
Child day care provider	1	0	4	2	1	0	0	2	2	0
Substitute/Foster care provider	0	0	0	0	0	0	0	0	0	0
<b>Total Mandatory Reporters</b>	<b>138</b>	<b>131</b>	<b>194</b>	<b>253</b>	<b>180</b>	<b>70</b>	<b>57</b>	<b>89</b>	<b>93</b>	<b>52</b>
<b>OTHER REPORTERS</b>										
Alleged victim	0	0	0	0	0	0	0	0	0	0
Parent	2	3	1	7	5	1	1	0	1	0
Other relative	7	6	4	7	7	2	4	2	4	0
Friends/neighbor	13	10	9	12	2	2	5	6	6	1
Perpetrator	0	0	0	0	0	0	0	0		0
Anonymous	6	3	5	30	11	4	0	5	11	0
Other	2	7	3	6	9	1	4	0	2	2
Unknown	19	16	7	14	13	6	6	4	1	1
<b>Total Other Reporters</b>	<b>49</b>	<b>45</b>	<b>29</b>	<b>76</b>	<b>47</b>	<b>16</b>	<b>20</b>	<b>17</b>	<b>25</b>	<b>4</b>
<b>STATE TOTAL</b>	<b>187</b>	<b>176</b>	<b>223</b>	<b>329</b>	<b>227</b>	<b>86</b>	<b>77</b>	<b>106</b>	<b>118</b>	<b>56</b>

**CHILD ABUSE AND NEGLECT IN HAWAII, 2006-2010**  
**MILITARY**

**CONFIRMED DUPLICATED COUNT OF CHILDREN: AGE AND SEX**

<b>AGE</b>	<b>2006</b>	<b>2007</b>	<b>2008</b>	<b>2009</b>	<b>2010</b>
Less Than One Year	19	14	24	16	9
1 Year	7	8	6	15	4
2 Years	9	5	15	9	9
3 Years	5	4	9	5	3
4 Years	6	7	9	12	5
5 Years	6	5	6	10	7
6 Years	6	4	4	3	1
7 Years	3	5	8	6	2
8 Years	4	4	4	5	1
9 Years	3	4	5	5	2
10 Years	3	1	2	3	2
11 Years	1	3	3	6	2
12 Years	2	3	3	4	1
13 Years	3	4	2	6	3
14 Years	1	2	1	3	0
15 Years	1	3	3	3	2
16 Years	1	1	1	3	2
17 Years	3	0	1	4	1
Unspecified	3	0	0	0	0
	<b>86</b>	<b>77</b>	<b>106</b>	<b>118</b>	<b>56</b>
<b>SEX</b>	<b>2006</b>	<b>2007</b>	<b>2008</b>	<b>2009</b>	<b>2010</b>
Male	42	42	42	50	25
Female	44	35	60	68	30
Unspecified	0	0	4	0	1
<b>STATE TOTAL</b>	<b>86</b>	<b>77</b>	<b>106</b>	<b>118</b>	<b>56</b>



**CHILD ABUSE AND NEGLECT IN HAWAII, 2006-2010**  
**MILITARY**

**CONFIRMED DUPLICATED COUNT OF CHILDREN: RACE AND SEVERITY**

<b>RACE</b>	<b>2006</b>	<b>2007</b>	<b>2008</b>	<b>2009</b>	<b>2010</b>
White	30	20	49	48	22
Black	12	6	13	23	12
Mixed	6	28	15	26	10
Filipino	3	0	1	0	0
Hawaiian/Part Hawaiian	10	6	6	1	0
Japanese	0	0	1	0	0
Mexican	0	0	0	0	0
Korean	0	0	0	0	0
Cambodian	0	0	0	0	0
Chinese	0	0	0	0	0
Puerto Rican	0	0	0	0	0
Other pacific islander	1	1	0	0	0
Samoan	1	0	0	0	0
Vietnamese	0	0	0	0	0
American Indian	1	3	4	4	0
Hispanic/Spanish	10	6	8	12	4
Other	0	0	0	0	0
Unable to determine	4	0	2	0	1
Unknown	8	7	7	4	7
<b>STATE TOTAL</b>	<b>86</b>	<b>77</b>	<b>106</b>	<b>118</b>	<b>56</b>

<b>SEVERITY</b>	<b>2006</b>	<b>2007</b>	<b>2008</b>	<b>2009</b>	<b>2010</b>
Fatal	1	0	0	2	0
Permanent Disability	0	0	0	0	0
Serious	1	0	2	0	5
Treatment	4	18	15	9	7
No Treatment	47	29	55	51	26
No Injury	33	30	34	56	18
Unspecified	0	0	0	0	0
<b>STATE TOTAL</b>	<b>86</b>	<b>77</b>	<b>106</b>	<b>118</b>	<b>56</b>