

A Statistical Report on

**CHILD ABUSE AND NEGLECT
IN HAWAII**

2011

Prepared by

**State of Hawaii
Department of Human Services
Management Services Office**

TABLE OF CONTENTS

LIST OF TABLES

Summary	1
Duplicated Count of Children by County: Reported and Confirmed, 2007 - 2011	4
Abuse and Neglect Types By County, Duplicated Count of Types for Each Child	5
Abuse and Neglect Types By County, Unduplicated Count of Types for Each Child	6
Unduplicated Count of Children by County District	7
Duplicated Count of Children by County Districts, 2007 - 2011	8
Duplicated Count of Children by Source of Initial Reporter, 2007 - 2011	9
Age of Confirmed Duplicated Count of Children, 2007 - 2011	11
Sex of Confirmed Duplicated Count of Children, 2007 - 2011	11
Race of Confirmed Duplicated Count of Children, 2007 - 2011	12
Severity of Harm of Confirmed Duplicated Count of Children, 2007 - 2011	12
Age, Sex, and Race of Confirmed Unduplicated Children	13
Recurrence Rate	14
Perpetrators of Confirmed Victims: Age and Sex	17
Perpetrator Relationship to Victim, 2007 - 2011	18
Age of Perpetrator, 2007 - 2011	18
Sex of Perpetrator, 2007 - 2011	18

LIST OF FIGURES

Duplicated Count of Children, 2007 - 2011	2
Percentage of Duplicated Count of Children by County	3
Duplicated Count of Children by County: Reported and Confirmed, 2007 - 2011	4
Duplicated Count of Children by Source of Initial Reporter	10
Age and Sex of Perpetrators of Confirmed Duplicated Count of Children	15
Perpetrator Relationship to Victim	16

MILITARY

Duplicated Count of Children by Military Branch and Rank, 2007 - 2011	19
Duplicated Count of Children by Source of Initial Reporter, 2007 - 2011	20
Age of Confirmed Duplicated Count of Children, 2007 - 2011	21
Sex of Confirmed Duplicated Count of Children, 2007 - 2011	21
Race of Confirmed Duplicated Count of Children, 2007 - 2011	22
Severity of Harm of Confirmed Duplicated Count of Children, 2007 - 2011	22

CHILD ABUSE AND NEGLECT IN HAWAII, 2011 SUMMARY

	HAWAII	OAHU	KAUAI	MAUI	TOTAL
INTAKES					
Confirmed	189	464	47	130	830
Not Confirmed	249	817	80	187	1,333
Total Reported	438	1,281	127	317	2,163
Percent Confirmed	43%	36%	37%	41%	38%
 DUPLICATED COUNT OF CHILDREN					
Confirmed	334	782	89	219	1,424
Not Confirmed	452	1,414	136	325	2,327
Total Reported	786	2,196	225	544	3,751
Percent Confirmed	42%	36%	40%	40%	38%
 UNDUPLICATED COUNT OF CHILDREN					
Confirmed	321	772	89	215	1,397
Not Confirmed	416	1,352	131	304	2,203
Total Reported	737	2,124	220	519	3,600
Percent Confirmed	44%	36%	40%	41%	39%

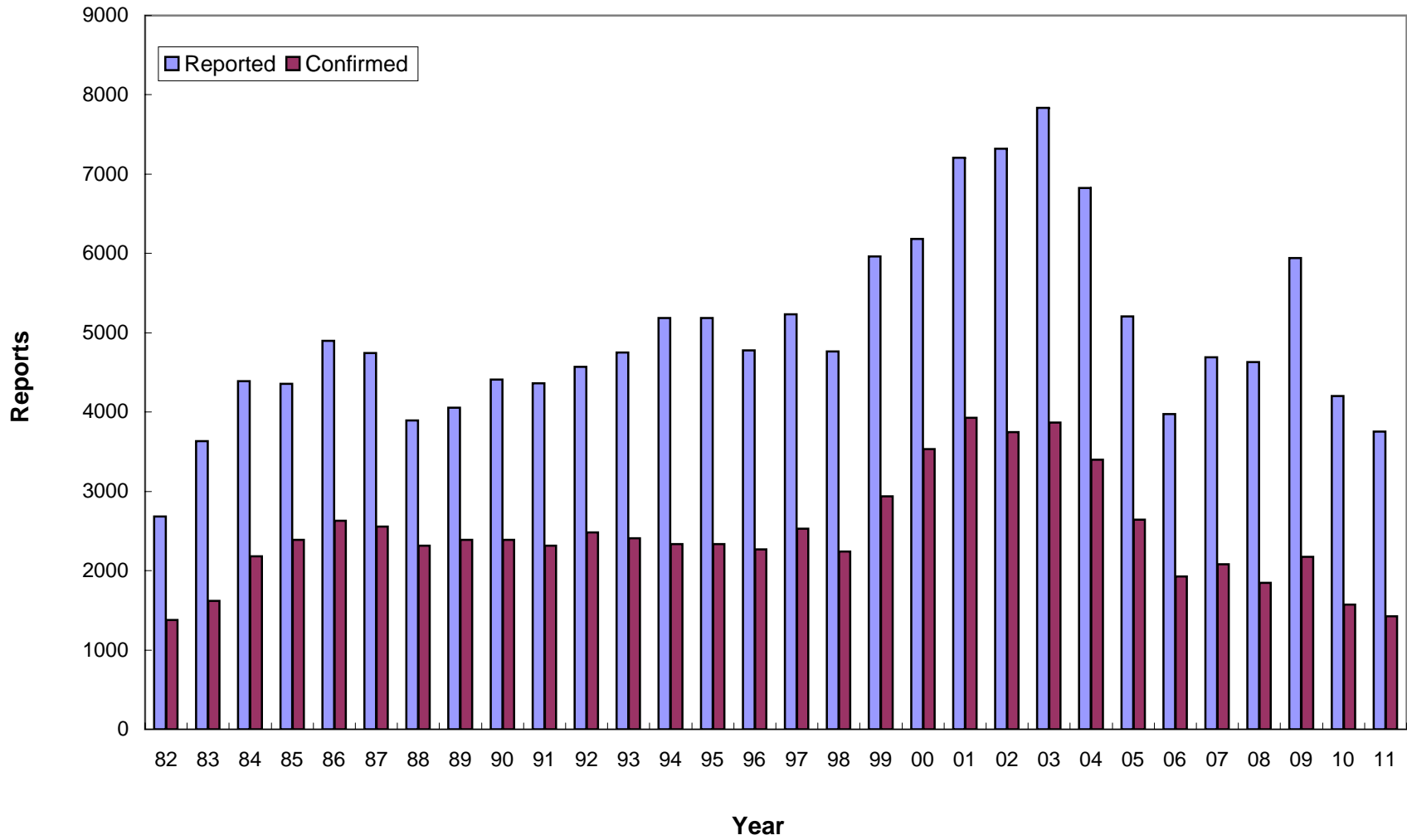
Intakes: reports accepted for investigation.

Duplicated count: counted by reports, a child is counted each time that he/she was found to be a victim.

Unduplicated count: counted by child, a child is counted only once during the reporting period, regardless of how many times the child was reported.

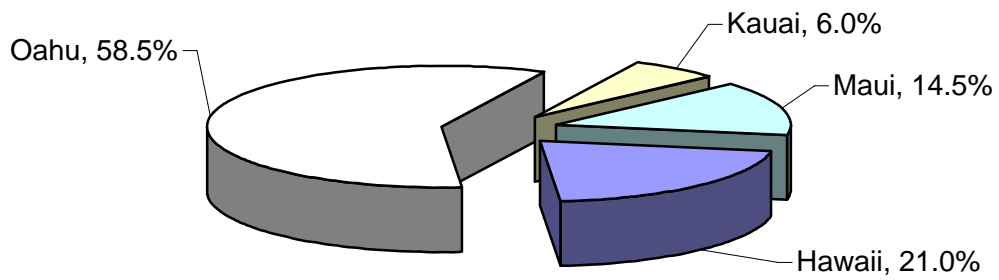
Note: In this report, data from 1999 and before were based on report date, data from 2000 and after were based on disposition date.

CHILD ABUSE AND NEGLECT IN HAWAII, 1982-2011 Duplicated Count of Children

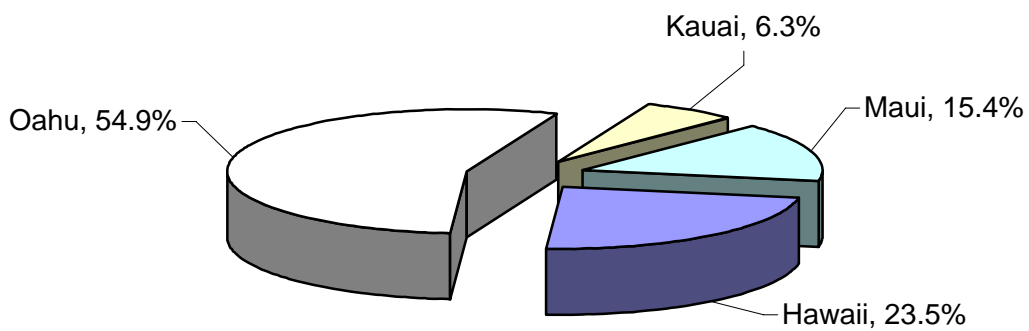


CHILD ABUSE AND NEGLECT IN HAWAII, 2011

Total Count of Children



Total Count of Children

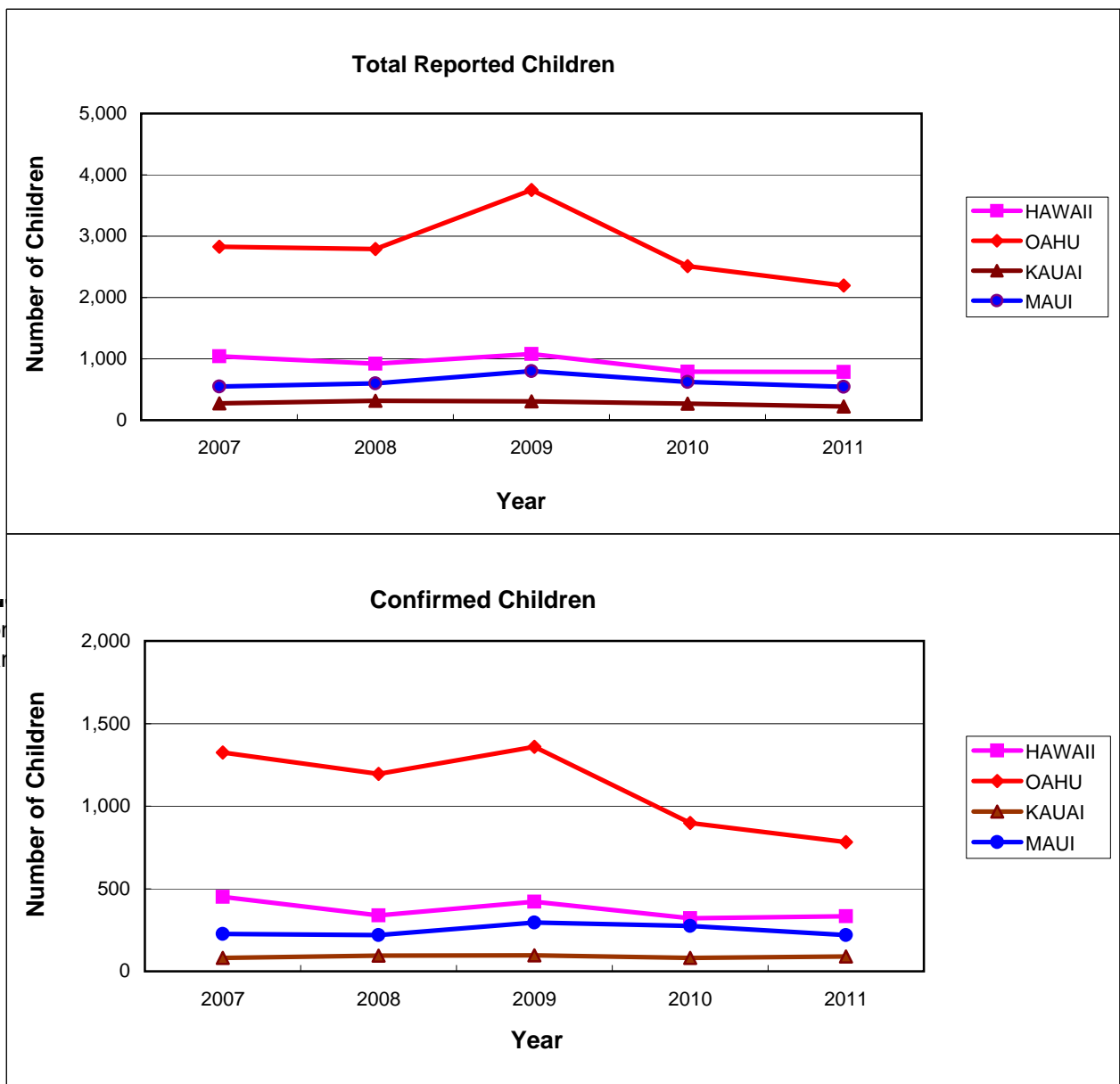


Count of Confirmed Children

CHILD ABUSE AND NEGLECT IN HAWAII, 2007-2011

Duplicated Count of Children by County

County	REPORTED					CONFIRMED				
	2007	2008	2009	2010	2011	2007	2008	2009	2010	2011
HAWAII	1,040	922	1,081	793	786	450	339	422	321	334
OAHU	2,826	2,790	3,753	2,512	2,196	1,324	1,196	1,360	898	782
KAUAI	274	316	305	271	225	82	95	96	82	89
MAUI	550	600	800	623	544	226	220	296	274	219
STATE	4,690	4,628	5,939	4,199	3,751	2,082	1,850	2,174	1,575	1,424



CHILD ABUSE AND NEGLECT IN HAWAII, 2011

ABUSE AND NEGLECT TYPES BY COUNTY

DUPLICATED COUNT OF TYPES FOR EACH CHILD*

Total Reported:	HAWAII	OAHU	KAUAI	MAUI	Total
Physical Abuse	160	484	37	87	768
Neglect	186	430	43	115	774
Medical Neglect	9	29	1	4	43
Sexual Abuse	51	133	22	35	241
Psychological Abuse	13	19	0	4	36
Threatened Harm	622	1,704	187	454	2,967
Total	1,041	2,799	290	699	4,829

Confirmed:

Physical Abuse	52	113	6	14	185
Neglect	44	133	17	42	236
Medical Neglect	4	10	0	3	17
Sexual Abuse	21	42	5	16	84
Psychological Abuse	9	3	0	2	14
Threatened Harm	279	629	73	176	1,157
Total	409	930	101	253	1,693

Confirmation Rate by Type

Physical Abuse	33%	23%	16%	16%	24%
Neglect	24%	31%	40%	37%	30%
Medical Neglect	44%	34%	0%	75%	40%
Sexual Abuse	41%	32%	23%	46%	35%
Psychological Abuse	69%	16%	#DIV/0!	50%	39%
Threatened Harm	45%	37%	39%	39%	39%
Total	39%	33%	35%	36%	35%

* A child may have more than one type of abuse/neglect per report and may have been reported more than once within the reporting period. Therefore, the sum of the abuse/neglect types exceeds the count of children.

CHILD ABUSE AND NEGLECT IN HAWAII, 2011

ABUSE AND NEGLECT TYPES BY COUNTY

UNDUPLICATED COUNT OF TYPES FOR EACH CHILD*

Total Reported:

	HAWAII	OAHU	KAUAI	MAUI	Total
Physical Abuse	160	470	35	83	748
Neglect	182	429	43	112	766
Medical Neglect	9	29	1	4	43
Sexual Abuse	51	132	22	35	240
Psychological Abuse	13	19	0	2	34
Threatened Harm	588	1,659	184	437	2,868
Total	1,003	2,738	285	673	4,699

Confirmed:

Physical Abuse	52	113	6	14	185
Neglect	42	132	17	40	231
Medical Neglect	4	10	0	3	17
Sexual Abuse	21	42	5	16	84
Psychological Abuse	9	3	0	1	13
Threatened Harm	268	622	73	174	1,137
Total	396	922	101	248	1,667

Confirmation Rate by Type

Physical Abuse	33%	24%	17%	17%	25%
Neglect	23%	31%	40%	36%	30%
Medical Neglect	44%	34%	0%	75%	40%
Sexual Abuse	41%	32%	23%	46%	35%
Psychological Abuse	69%	16%	#DIV/0!	50%	38%
Threatened Harm	46%	37%	40%	40%	40%
Total	39%	34%	35%	37%	35%

* A child may have more than one type of abuse/neglect per report and may have been reported more than once within the reporting period, but the same maltreatment was counted only once . Therefore, the sum of the abuse/neglect types exceeds the count of children.

CHILD ABUSE AND NEGLECT IN HAWAII, 2011

NUMBER OF UNDUPLICATED CHILDREN BY DISTRICT

	CONFIRMED	NOT CONFIRMED	TOTAL
HAWAII			
N. Hilo	0	2	2
S. Hilo	94	114	208
Puna	61	141	202
Kau	10	6	16
S. Kona	9	1	10
N. Kona	5	18	23
S. Kohala	3	5	8
N. Kohala	0	0	0
Hamakua	14	11	25
Unspecified	125	118	243
Total	321	416	737
OAHU			
Honolulu	179	331	510
Ewa	203	370	573
Wahiawa	59	105	164
Waianae	145	247	392
Waialua	17	20	37
Koolauloa	22	24	46
Koolaupoko	103	180	283
Unspecified	44	75	119
Total	772	1,352	2,124
KAUAI			
Lihue	24	15	39
Koloa	13	22	35
Waimea	6	13	19
Hanalei	0	1	1
Kawaihau	11	11	22
Unspecified	35	69	104
Total	89	131	220
MAUI			
Lahaina	22	14	36
Wailuku	84	109	193
Makawao	31	69	100
Hana	10	3	13
Molokai	19	12	31
Lanai	1	5	6
Unspecified	48	92	140
Total	215	304	519
STATE TOTAL	1,397	2,203	3,600

CHILD ABUSE AND NEGLECT IN HAWAII, 2007-2011

Duplicated Count of Children by County District

DISTRICT	REPORTED					CONFIRMED				
	2007	2008	2009	2010	2011	2007	2008	2009	2010	2011
HAWAII COUNTY	1,040	922	1,081	793	786	450	339	422	321	334
N. Hilo	3	0	2	10	2	1	0	2	7	0
S. Hilo	167	168	236	240	221	67	66	86	74	96
Puna	177	143	248	246	205	45	51	100	105	61
Kau	32	26	31	12	20	25	14	25	10	13
S. Kona	16	11	30	20	11	12	4	12	10	9
N. Kona	41	63	56	32	23	17	18	21	11	5
S. Kohala	44	11	29	8	11	26	7	10	7	3
N. Kohala	7	11	6	8	0	3	3	0	3	0
Hamakua	7	10	24	14	29	2	1	5	4	14
Unspecified	546	479	419	203	264	252	175	161	90	133
OAHU	2,826	2,790	3,753	2,512	2,196	1,324	1,196	1,360	898	782
Honolulu	740	735	1,022	700	530	336	293	348	267	181
Ewa	809	748	1,051	697	583	377	314	367	206	207
Wahiawa	200	191	368	227	173	108	103	146	81	60
Waianae	505	500	556	374	405	248	224	239	162	146
Waialua	45	24	67	52	40	19	9	15	24	17
Koolauloa	51	70	75	39	50	25	37	29	20	22
Koolaupoko	284	368	449	274	294	109	152	154	96	103
Unspecified	192	154	165	149	121	102	64	62	42	46
KAUAI COUNTY	274	316	305	271	225	82	95	96	82	89
Lihue	60	70	60	43	42	19	20	18	15	24
Koloa	34	33	28	40	36	7	6	10	10	13
Waimea	26	52	45	12	20	6	15	8	4	6
Hanalei	15	24	9	12	1	3	13	1	3	0
Kawaihau	76	68	59	47	22	30	19	26	14	11
Unspecified	63	69	104	117	104	17	22	33	36	35
MAUI COUNTY	550	600	800	623	544	226	220	296	274	219
Lahaina	36	44	65	32	36	15	19	24	17	22
Wailuku	178	158	285	250	206	72	60	117	122	85
Makawao	88	133	129	97	104	45	35	50	38	31
Hana	1	6	2	4	13	0	4	0	2	10
Molokai	31	30	38	23	31	9	19	9	15	19
Lanai	12	25	8	11	8	8	14	7	8	2
Unspecified	204	204	273	206	146	77	69	89	72	50
STATE TOTAL	4,690	4,628	5,939	4,199	3,751	2,082	1,850	2,174	1,575	1,424

CHILD ABUSE AND NEGLECT IN HAWAII, 2007- 2011

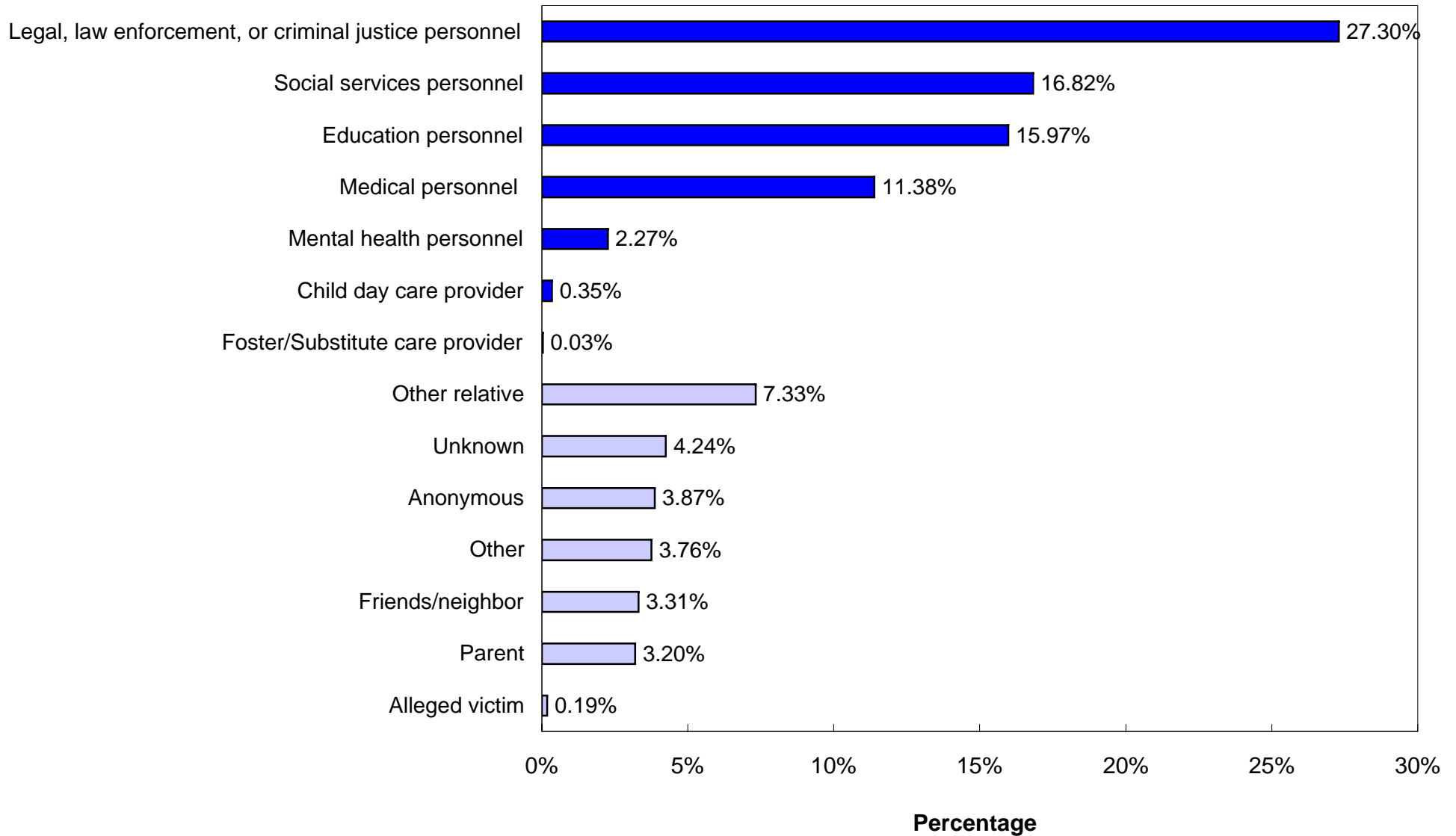
Duplicated Count of Children by Source of Initial Reporter

SOURCE	REPORTED					CONFIRMED				
	2007	2008	2009	2010	2011	2007	2008	2009	2010	2011
MANDATED REPORTERS										
Social services personnel	780	821	898	699	631	359	314	387	312	254
Medical personnel	606	559	639	491	427	355	306	297	227	211
Mental health personnel	93	76	136	117	85	50	25	53	32	28
Legal, law enforcement, or criminal justice personnel	965	936	1709	1,120	1,024	477	445	695	445	436
Education personnel	921	919	942	762	599	333	326	281	286	205
Child day care provider	6	10	15	15	13	3	3	4	3	3
Foster/Substitute care provider	14	2	7	2	1	11	0	2	1	0
Total Mandatory Reporters	3,385	3,323	4,346	3,206	2,780	1,588	1,419	1,719	1,306	1,137
OTHER REPORTERS										
Alleged victim	21	3	12	13	7	11	2	6	1	0
Parent	124	107	167	110	120	49	22	43	42	32
Other relative	253	276	372	234	275	134	109	122	80	97
Friends/neighbor	133	159	145	138	124	30	51	30	25	32
Anonymous	174	190	262	154	145	40	69	81	37	38
Other	137	140	208	113	141	66	46	61	30	45
Unknown	463	430	427	231	159	164	132	112	54	43
Total Other Reporters	1,305	1,305	1,593	993	971	494	431	455	269	287
STATE TOTAL	4,690	4,628	5,939	4,199	3,751	2,082	1,850	2,174	1,575	1,424

CHILD ABUSE AND NEGLECT IN HAWAII, 2011
Mandated and Non-Mandated Source of Initial Reporter

Sources

■ Mandated Sources ■ Non-Mandated Sources



**CHILD ABUSE AND NEGLECT IN HAWAII, 2007-2011
VICTIM**

CONFIRMED DUPLICATED COUNT OF CHILDREN

AGE	2007	2008	2009	2010	2011
Less Than One Year	316	294	292	214	224
1 Year	148	130	182	96	116
2 Years	139	113	149	111	86
3 Years	126	99	125	113	108
4 Years	118	87	158	113	96
5 Years	105	99	126	86	104
6 Years	95	110	116	85	84
7 Years	103	91	105	80	62
8 Years	107	92	114	84	39
9 Years	93	93	89	73	54
10 Years	82	82	103	73	55
11 Years	84	87	97	66	43
12 Years	102	68	93	57	65
13 Years	101	75	92	75	63
14 Years	105	99	105	72	67
15 Years	100	85	86	66	55
16 Years	97	91	70	57	61
17 Years	53	54	71	51	38
Unknown	8	1	1	3	4
Median age	6	6	6	6	5
TOTAL	2,082	1,850	2,174	1,575	1,424
SEX	2007	2008	2009	2010	2011
Male	1,004	899	1,048	732	707
Female	1,071	943	1,123	839	712
Unknown	7	8	3	4	5
TOTAL	2,082	1,850	2,174	1,575	1,424

**CHILD ABUSE AND NEGLECT IN HAWAII, 2007-2011
VICTIM**

CONFIRMED DUPLICATED COUNT OF CHILDREN

RACE	2007	2008	2009	2010	2011
Hawaiian/Part Hawaiian	641	662	856	613	582
Mixed	345	272	347	302	244
White	228	231	222	174	153
Filipino	148	115	169	76	89
Samoan	45	100	54	36	32
Black	29	40	45	30	42
Japanese	35	34	17	10	20
Korean	1	6	6	3	2
American Indian	11	6	17	7	9
Chinese	9	6	14	10	6
Other Pacific Islander	66	69	106	45	45
Hispanic/Spanish	55	67	88	48	26
Vietnamese	11	3	3	1	6
Laotian	0	2	3	2	1
Cambodian	1	0	1	0	0
Alaskan Native	0	0	1	0	0
Tongan					5
Unable to Determine	97	56	50	62	50
Missing	360	181	175	156	112
TOTAL	2,082	1,850	2,174	1,575	1,424

SEVERITY OF HARM	2007	2008	2009	2010	2011
Fatal	2	1	5	0	4
No treatment necessary	949	828	959	725	685
Treatment required	284	212	178	156	146
Serious	53	51	44	28	29
Permanent disability	0	1	3	0	7
No injury	794	757	985	666	553
TOTAL	2,082	1,850	2,174	1,575	1,424

**CHILD ABUSE AND NEGLECT IN HAWAII, 2011
VICTIM**

CONFIRMED UNDUPLICATED COUNT OF CHILDREN*: AGE, SEX, RACE, SEVERITY

AGE	Number	Percent	RACE	Number	Percent
Less Than One Year	222	15.9	MISSING	110	7.9
1 Year	112	8.0	American Indian	9	0.6
2 Years	84	6.0	Black	41	2.9
3 Years	106	7.6	Chinese	6	0.4
4 Years	94	6.7	Filipino	87	6.2
5 Years	100	7.2	Hawaiian/Part Hawaiian	572	40.9
6 Years	81	5.8	Hispanic/Spanish	26	1.9
7 Years	62	4.4	Japanese	20	1.4
8 Years	39	2.8	Korean	2	0.1
9 Years	52	3.7	Laotian	1	0.1
10 Years	53	3.8	Mixed	236	16.9
11 Years	42	3.0	Other pacific islander	45	3.2
12 Years	63	4.5	Samoan	32	2.3
13 Years	63	4.5	Tongan	5	0.4
14 Years	67	4.8	Unable to determine	50	3.6
15 Years	55	3.9	Vietnamese	6	0.4
16 Years	60	4.3	White	149	10.7
17 Years	38	2.7			
Unknown	4	0.3			
TOTAL	1,397	100.0	TOTAL	1,397	100.0

SEX	Number	Percent	SEVERITY OF HARM	Number	Percent
Male	694	49.7	No treatment necessary	669	47.9
Female	698	50.0	Treatment required	144	10.3
Unknown or missing	5	0.4	Serious	29	2.1
			Permanent disability	7	0.5
			Fatal	3	0.2
			No injury	545	39.0
TOTAL	1,397	100.0	TOTAL	1,397	100.0

*A child is only counted once, regardless of how many times he/she was reported.
The highest severity level was selected for a child with more than one confirmed severity.

CHILD ABUSE AND NEGLECT IN HAWAII, 2011
Recurrence*

	Frequency	Percent
No Recurrence**	690	99.28
Recurrence***	5	0.72
Total	695	100.0

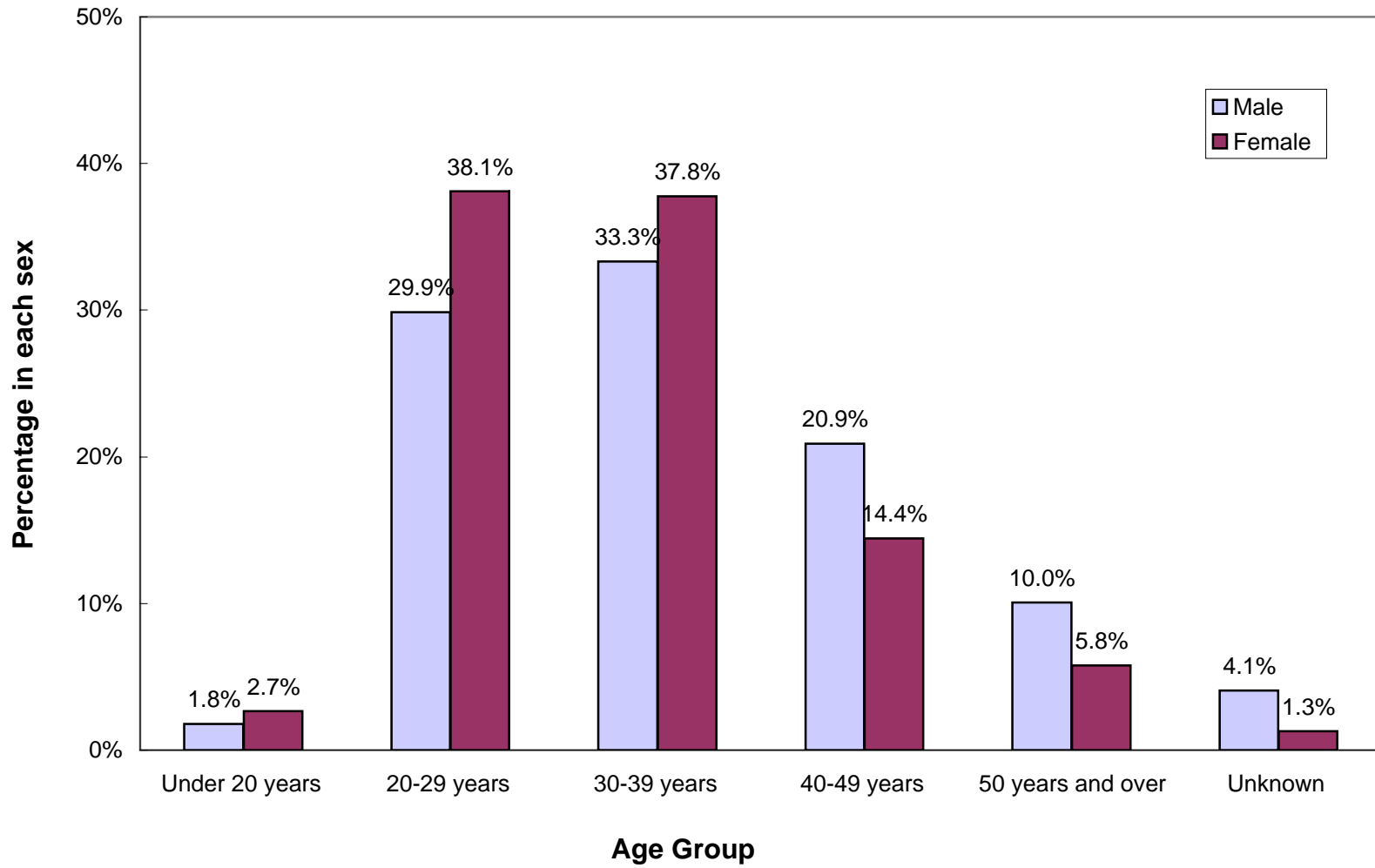
*Only confirmed child victims, whose report year and disposition year were both in 2011 and the initial maltreatment report date fell between January-June, 2011, were included in the recurrence rate calculation.

**Maltreatment occurred between January and June. There was no recurrence within six months.

***First maltreatment occurred between January and June. The second maltreatment occurred within six months.

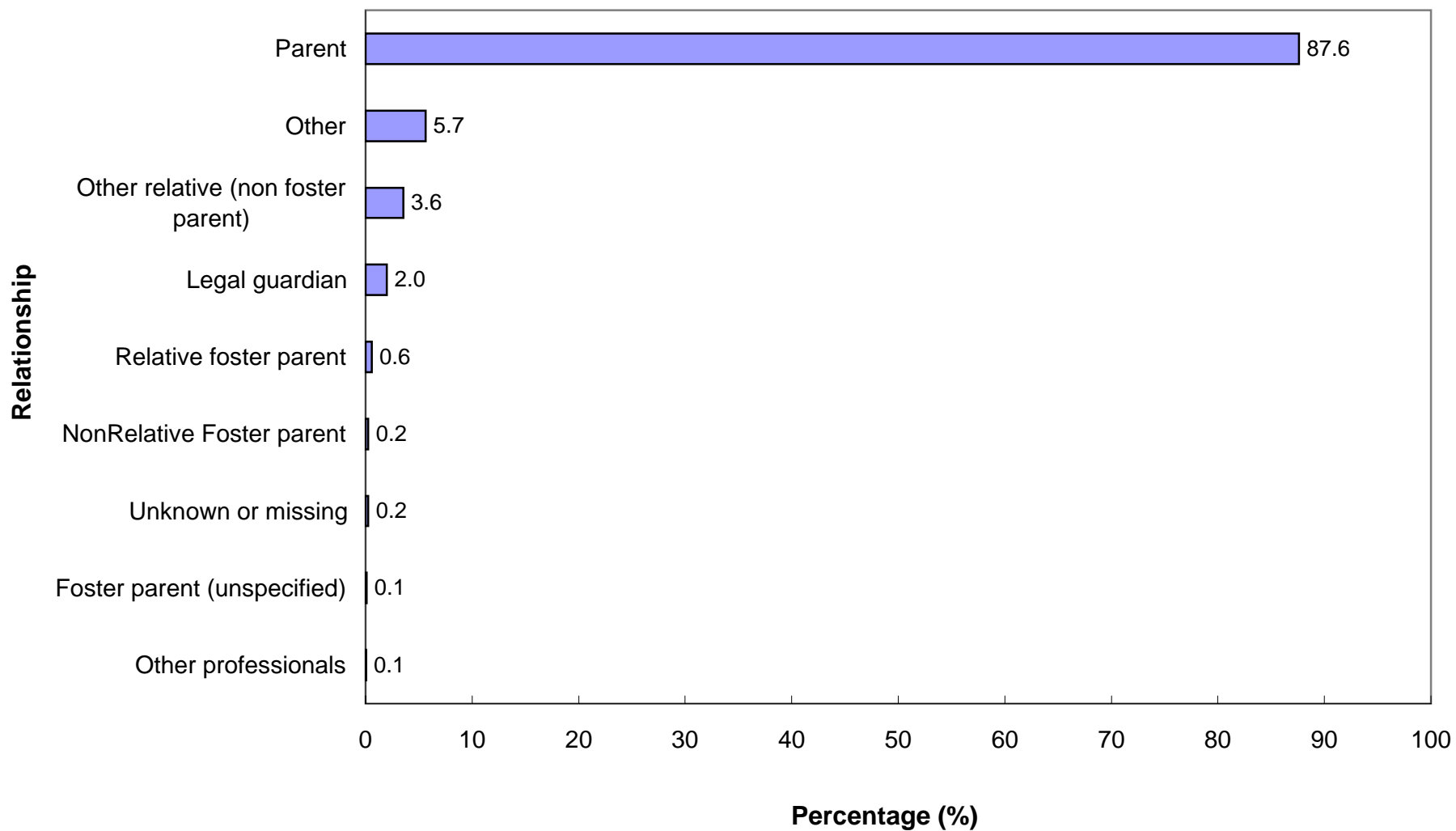
CHILD ABUSE AND NEGLECT IN HAWAII, 2011

Duplicated Count of Perpetrators: Age Group by Sex



CHILD ABUSE AND NEGLECT IN HAWAII, 2011

Relationship of Perpetrator to Confirmed Victim



CHILD ABUSE AND NEGLECT IN HAWAII, 2011

UNDUPLICATED PERPETRATORS FOR CONFIRMED VICTIMS*

AGE	Number	Percent
Under 20 years	40	3.4
20-29 years	410	34.7
30-39 years	384	32.5
40-49 years	215	18.2
50 years and over	96	8.1
Unknown	36	3.1
TOTAL	1,181	100.0

SEX	Number	Percent
Male	552	46.7
Female	625	52.9
Unknown or missing	4	0.3
TOTAL	1,181	100.0

* A perpetrator was counted only once regardless of how many times he/she was associated with a child victim.

**CHILD ABUSE AND NEGLECT IN HAWAII, 2007-2011
PERPETRATORS OF CONFIRMED VICTIMS**

Duplicated Count of Perpetrators*

RELATIONSHIP TO VICTIM	2007	2008	2009	2010	2011
Parent	2,752	2,531	2,922	2,101	1,844
Other relative	94	87	117	75	75
Relative foster parent	7	4	13	6	12
NonRelative Foster parent	18	18	13	17	5
Group home/Residential facility staff	2	0	0	0	0
Legal guardian	46	41	52	38	42
Other professionals	0	0	1	0	1
Foster parent, relationship unspecified	0	0	1	0	2
Other	157	110	160	157	119
Unknown/missing	10	19	30	7	5
TOTAL	3,086	2,810	3,309	2,401	2,105

PERPETRATOR AGE	2007	2008	2009	2010	2011
Under 20 Years	69	79	80	38	47
20 - 29 Years	947	908	1,015	795	719
30 - 39 Years	1,200	1068	1,286	878	749
40 - 49 Years	503	480	615	445	368
50 Years or Older	232	172	263	210	165
Unknown	135	103	50	35	57
TOTAL	3,086	2,810	3,309	2,401	2,105

PERPETRATOR SEX	2007	2008	2009	2010	2011
Male	1,381	1,249	1511	1,153	1,005
Female	1,692	1,540	1785	1,240	1,094
Unknown	13	21	13	8	6
TOTAL	3,086	2,810	3,309	2,401	2,105

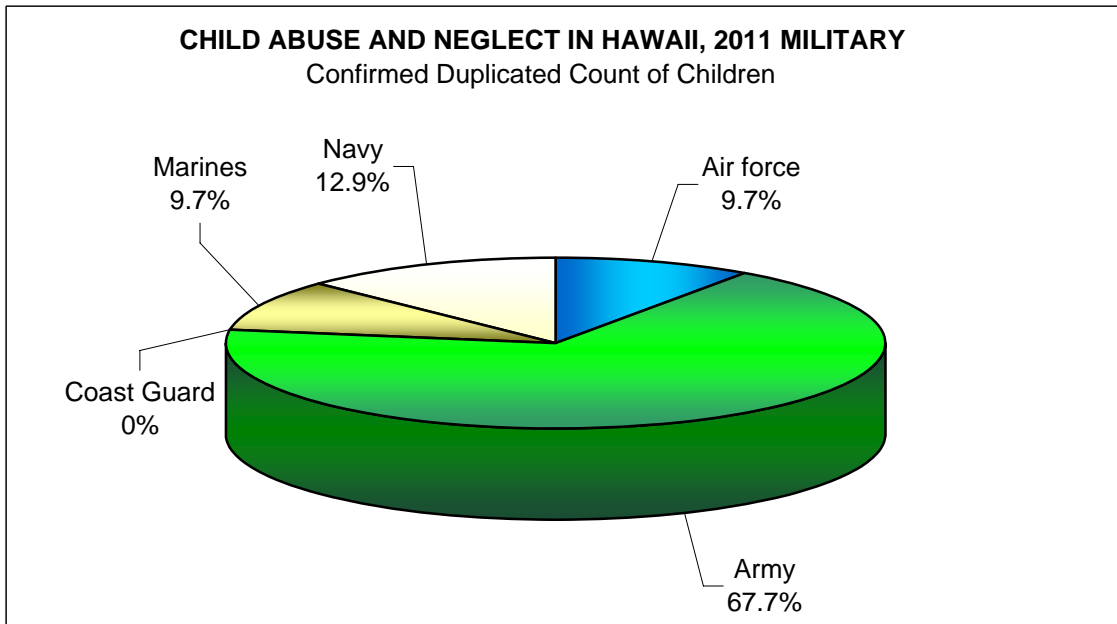
*A perpetrator was counted each time that he/she was associated with a child victim, therefore one perpetrator may have been counted more than once. For example, if an intake had 2 confirmed victims and each victim had 2 perpetrators, then the count of perpetrators would be 4.

CHILD ABUSE AND NEGLECT IN HAWAII, 2007-2011 MILITARY

DUPLICATED COUNT OF CHILDREN

Military Branch	REPORTED					CONFIRMED				
	2007	2008	2009	2010	2011	2007	2008	2009	2010	2011
Air force	5	6	15	18	13	2	1	4	0	6
Army	123	141	201	148	110	59	66	63	35	42
Coast Guard	3	0	6	0	3	2	0	0	0	0
Marines	19	32	37	13	21	3	18	14	6	6
Navy	26	44	70	48	28	11	21	37	15	8
State Total	176	223	329	227	175	77	106	118	56	62

Military Rank	2007	2008	2009	2010	2011	2007	2008	2009	2010	2011
Unspecified	43	51	113	108	83	21	18	35	18	32
Enlisted	123	157	193	114	91	52	80	77	37	30
Non-Commissioned	5	14	19	5	0	4	8	6	1	0
Officer	5	1	4	0	1	0	0	0	0	0
State Total	176	223	329	227	175	77	106	118	56	62



CHILD ABUSE AND NEGLECT IN HAWAII, 2007-2011
MILITARY
Duplicated Count of Children by Source of Initial Reporter

SOURCE	REPORTED					CONFIRMED				
	2007	2008	2009	2010	2011	2007	2008	2009	2010	2011
MANDATED REPORTERS										
Social services personnel	14	46	61	49	46	5	16	24	11	14
Medical personnel	33	33	36	43	33	13	19	13	13	10
Mental health personnel	15	0	7	4	1	10	0	5	1	0
Legal, law enforcement, or criminal justice personnel	44	75	99	49	44	22	44	32	12	24
Education personnel	25	36	48	34	16	7	8	17	15	9
Child day care provider	0	4	2	1	3	0	2	2	0	3
Substitute/Foster care provider	0	0	0	0	1	0	0	0	0	0
Total Mandatory Reporters	131	194	253	180	144	57	89	93	52	60
OTHER REPORTERS										
Alleged victim	0	0	0	0	0	0	0	0	0	0
Parent	3	1	7	5	5	1	0	1	0	0
Other relative	6	4	7	7	4	4	2	4	0	0
Friends/neighbor	10	9	12	2	4	5	6	6	1	0
Anonymous	3	5	30	11	9	0	5	11	0	1
Other	7	3	6	9	4	4	0	2	2	1
Unknown	16	7	14	13	5	6	4	1	1	0
Total Other Reporters	45	29	76	47	31	20	17	25	4	2
STATE TOTAL	176	223	329	227	175	77	106	118	56	62

CHILD ABUSE AND NEGLECT IN HAWAII, 2007-2011
MILITARY

CONFIRMED DUPLICATED COUNT OF CHILDREN: AGE AND SEX

AGE	2007	2008	2009	2010	2011
Less Than One Year	14	24	16	9	11
1 Year	8	6	15	4	9
2 Years	5	15	9	9	6
3 Years	4	9	5	3	4
4 Years	7	9	12	5	7
5 Years	5	6	10	7	5
6 Years	4	4	3	1	1
7 Years	5	8	6	2	4
8 Years	4	4	5	1	0
9 Years	4	5	5	2	2
10 Years	1	2	3	2	5
11 Years	3	3	6	2	1
12 Years	3	3	4	1	2
13 Years	4	2	6	3	3
14 Years	2	1	3	0	1
15 Years	3	3	3	2	0
16 Years	1	1	3	2	1
17 Years	0	1	4	1	0
Unspecified	0	0	0	0	0
	77	106	118	56	62
SEX	2007	2008	2009	2010	2011
Male	42	42	50	25	32
Female	35	60	68	30	30
Unspecified	0	4	0	1	0
STATE TOTAL	77	106	118	56	62

CHILD ABUSE AND NEGLECT IN HAWAII, 2007-2011
MILITARY

CONFIRMED DUPLICATED COUNT OF CHILDREN: RACE AND SEVERITY

RACE	2007	2008	2009	2010	2011
White	20	49	48	22	22
Black	6	13	23	12	14
Mixed	28	15	26	10	11
Filipino	0	1	0	0	1
Hawaiian/Part Hawaiian	6	6	1	0	0
Japanese	0	1	0	0	3
Mexican	0	0	0	0	0
Korean	0	0	0	0	0
Cambodian	0	0	0	0	0
Chinese	0	0	0	0	0
Puerto Rican	0	0	0	0	0
Other pacific islander	1	0	0	0	0
Samoan	0	0	0	0	0
Vietnamese	0	0	0	0	0
American Indian	3	4	4	0	0
Hispanic/Spanish	6	8	12	4	3
Other	0	0	0	0	0
Unable to determine	0	2	0	1	1
Unknown	7	7	4	7	7
STATE TOTAL	77	106	118	56	62

SEVERITY	2007	2008	2009	2010	2011
Fatal	0	0	2	0	1
Permanent Disability	0	0	0	0	1
Serious	0	2	0	5	3
Treatment	18	15	9	7	12
No Treatment	29	55	51	26	33
No Injury	30	34	56	18	12
Unspecified	0	0	0	0	0
STATE TOTAL	77	106	118	56	62