

A Statistical Report on

**CHILD ABUSE AND NEGLECT
IN HAWAII**

2012

Prepared by

State of Hawaii

Department of Human Services

Management Services Office

TABLE OF CONTENTS

LIST OF TABLES

Summary	1
Duplicated Count of Children by County: Reported and Confirmed, 2008 - 2012	4
Abuse and Neglect Types By County, Duplicated Count of Types for Each Child	5
Abuse and Neglect Types By County, Unduplicated Count of Types for Each Child	6
Unduplicated Count of Children by County District	7
Duplicated Count of Children by County Districts, 2008 - 2012	8
Duplicated Count of Children by Source of Initial Reporter, 2008 - 2012	9
Age of Confirmed Duplicated Count of Children, 2008 - 2012	11
Sex of Confirmed Duplicated Count of Children, 2008 - 2012	11
Race of Confirmed Duplicated Count of Children, 2008 - 2012	12
Severity of Harm of Confirmed Duplicated Count of Children, 2008 - 2012	12
Age, Sex, and Race of Confirmed Unduplicated Children	13
Recurrence Rate	14
Perpetrators of Confirmed Victims: Age and Sex	17
Perpetrator Relationship to Victim, 2008 - 2012	18
Age of Perpetrator, 2008 - 2012	18
Sex of Perpetrator, 2008 - 2012	18

LIST OF FIGURES

Duplicated Count of Children, 2008 - 2012	2
Percentage of Duplicated Count of Children by County	3
Duplicated Count of Children by County: Reported and Confirmed, 2008 - 2012	4
Duplicated Count of Children by Source of Initial Reporter	10
Age and Sex of Perpetrators of Confirmed Duplicated Count of Children	15
Perpetrator Relationship to Victim	16

MILITARY

Duplicated Count of Children by Military Branch and Rank, 2008 - 2012	19
Duplicated Count of Children by Source of Initial Reporter, 2008 - 2012	20
Age of Confirmed Duplicated Count of Children, 2008 - 2012	21
Sex of Confirmed Duplicated Count of Children, 2008 - 2012	21
Race of Confirmed Duplicated Count of Children, 2008 - 2012	22
Severity of Harm of Confirmed Duplicated Count of Children, 2008 - 2012	22

CHILD ABUSE AND NEGLECT IN HAWAII, 2012 SUMMARY

	HAWAII	OAHU	KAUAI	MAUI	TOTAL
INTAKES					
Confirmed	185	463	59	139	846
Not Confirmed	283	856	119	218	1,476
Total Reported	468	1,319	178	357	2,322
Percent Confirmed	40%	35%	33%	39%	36%
 DUPLICATED COUNT OF CHILDREN					
Confirmed	306	750	103	233	1,392
Not Confirmed	481	1,528	197	350	2,556
Total Reported	787	2,278	300	583	3,948
Percent Confirmed	39%	33%	34%	40%	35%
 UNDUPLICATED COUNT OF CHILDREN					
Confirmed	301	740	98	229	1,368
Not Confirmed	459	1,448	187	337	2,431
Total Reported	760	2,188	285	566	3,799
Percent Confirmed	40%	34%	34%	40%	36%

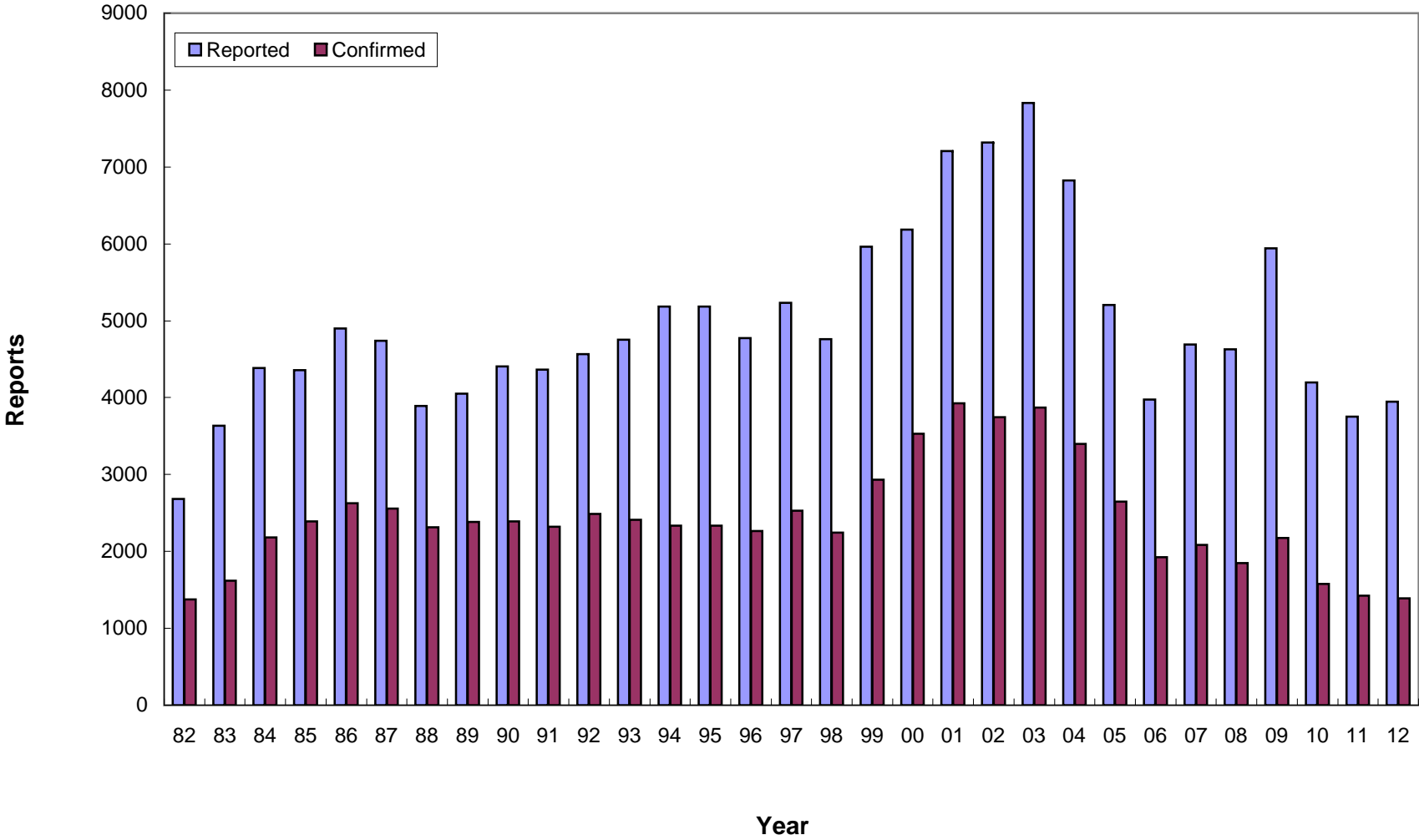
Intakes: reports accepted for investigation.

Duplicated count: counted by reports, a child is counted each time that he/she was found to be a victim.

Unduplicated count: counted by child, a child is counted only once during the reporting period, regardless of how many times the child was reported.

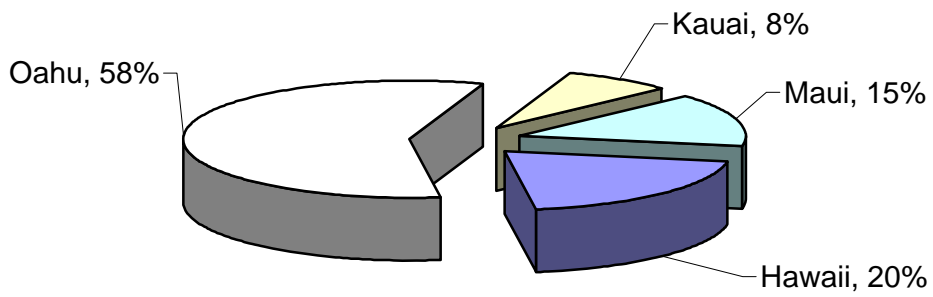
Note: In this report, data from 1999 and before were based on report date, data from 2000 and after were based on disposition date.

CHILD ABUSE AND NEGLECT IN HAWAII, 1982-2012
Duplicated Count of Children

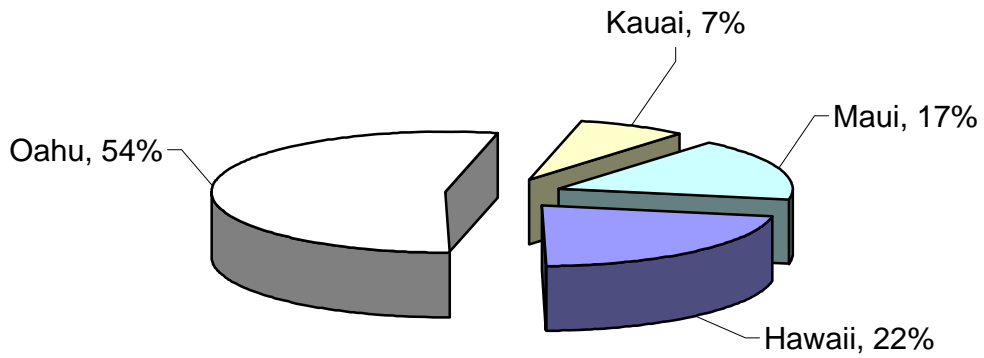


CHILD ABUSE AND NEGLECT IN HAWAII, 2012

Total Count of Children



Total Count of Children

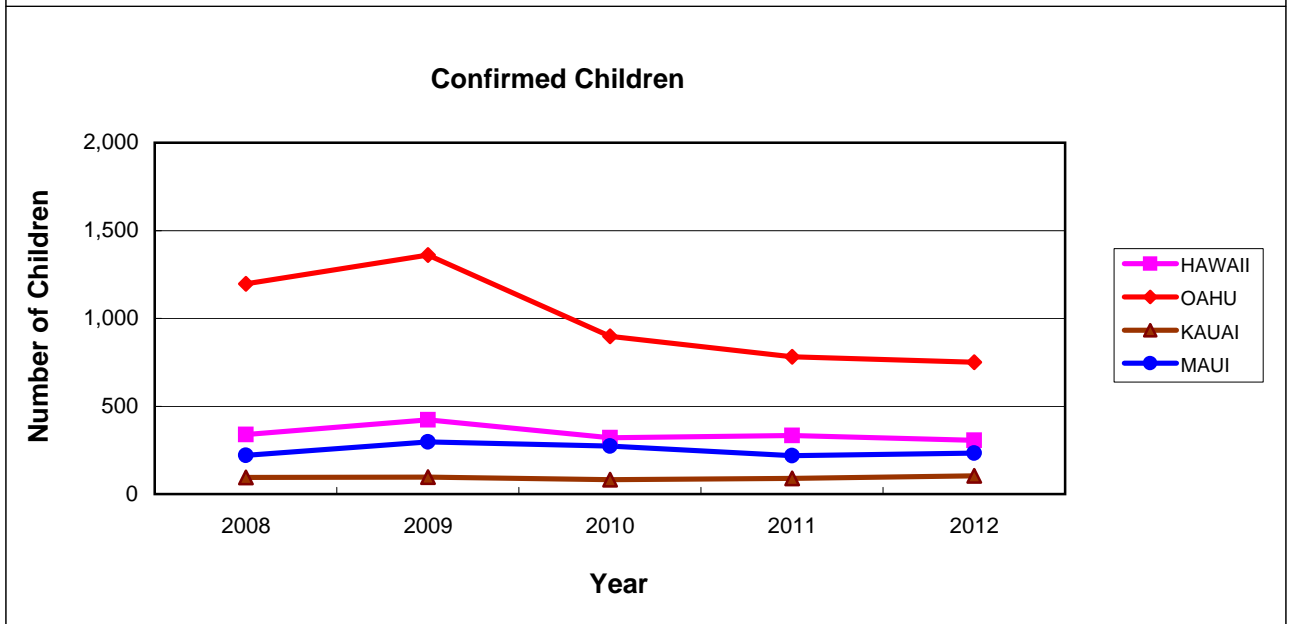
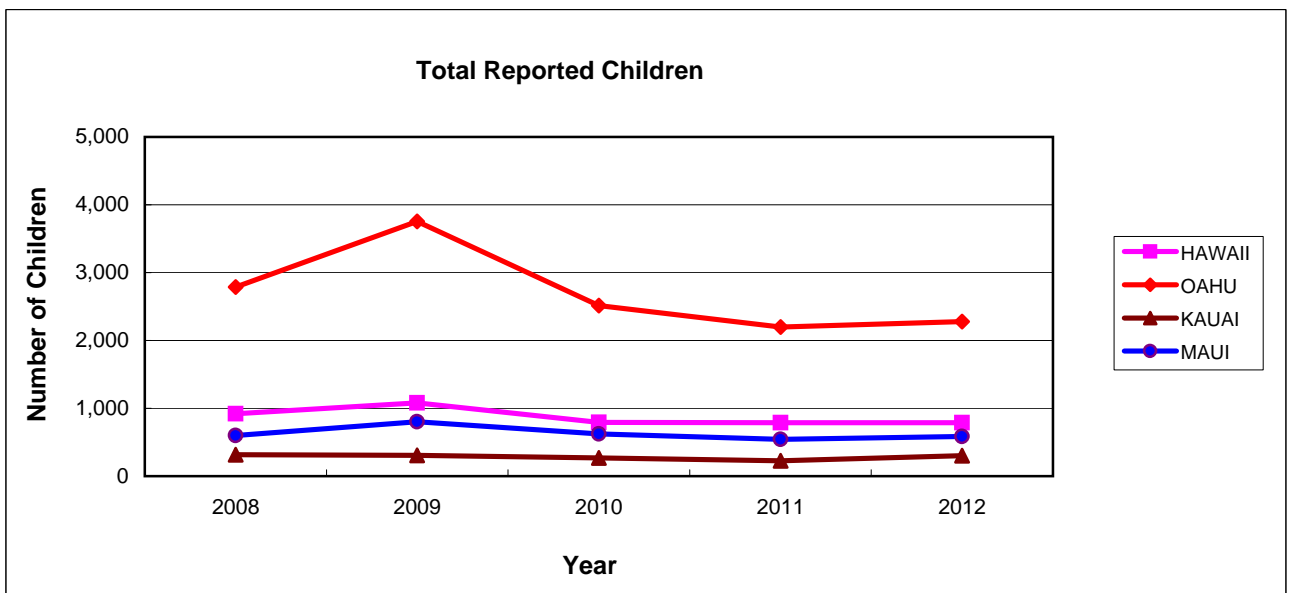


Count of Confirmed Children

CHILD ABUSE AND NEGLECT IN HAWAII, 2008-2012

Duplicated Count of Children by County

County	REPORTED					CONFIRMED				
	2008	2009	2010	2011	2012	2008	2009	2010	2011	2012
HAWAII	922	1,081	793	786	787	339	422	321	334	306
OAHU	2,790	3,753	2,512	2,196	2,278	1,196	1,360	898	782	750
KAUAI	316	305	271	225	300	95	96	82	89	103
MAUI	600	800	623	544	583	220	296	274	219	233
STATE	4,628	5,939	4,199	3,751	3,948	1,850	2,174	1,575	1,424	1,392



CHILD ABUSE AND NEGLECT IN HAWAII, 2012

ABUSE AND NEGLECT TYPES BY COUNTY

DUPLICATED COUNT OF TYPES FOR EACH CHILD*

Total Reported:	HAWAII	OAHU	KAUAI	MAUI	Total
Physical Abuse	178	456	43	93	770
Neglect	213	541	80	130	964
Medical Neglect	12	31	1	6	50
Sexual Abuse	46	152	18	23	239
Psychological Abuse	2	21	4	2	29
Threatened Harm	580	1,724	231	469	3,004
Total	1,031	2,925	377	723	5,056

Confirmed:

Physical Abuse	52	96	8	24	180
Neglect	44	129	9	25	207
Medical Neglect	7	13	0	2	22
Sexual Abuse	10	65	1	7	83
Psychological Abuse	1	2	0	1	4
Threatened Harm	239	568	92	198	1,097
Total	353	873	110	257	1,593

Confirmation Rate by Type

Physical Abuse	29%	21%	19%	26%	23%
Neglect	21%	24%	11%	19%	21%
Medical Neglect	58%	42%	0%	33%	44%
Sexual Abuse	22%	43%	6%	30%	35%
Psychological Abuse	50%	10%	0%	50%	14%
Threatened Harm	41%	33%	40%	42%	37%
Total	34%	30%	29%	36%	32%

* A child may have more than one type of abuse/neglect per report and may have been reported more than once within the reporting period. Therefore, the sum of the abuse/neglect types exceeds the count of children.

CHILD ABUSE AND NEGLECT IN HAWAII, 2012

ABUSE AND NEGLECT TYPES BY COUNTY

UNDUPLICATED COUNT OF TYPES FOR EACH CHILD*

Total Reported:

	HAWAII	OAHU	KAUAI	MAUI	Total
Physical Abuse	174	448	42	92	756
Neglect	209	530	80	126	945
Medical Neglect	12	30	1	6	49
Sexual Abuse	44	150	18	23	235
Psychological Abuse	2	21	4	2	29
Threatened Harm	568	1,667	221	458	2,914
Total	1,009	2,846	366	707	4,928

Confirmed:

Physical Abuse	51	96	7	23	177
Neglect	44	129	9	25	207
Medical Neglect	7	13	0	2	22
Sexual Abuse	10	65	1	7	83
Psychological Abuse	1	2	0	1	4
Threatened Harm	236	565	88	195	1,084
Total	349	870	105	253	1,577

Confirmation Rate by Type

Physical Abuse	29%	21%	17%	25%	23%
Neglect	21%	24%	11%	20%	22%
Medical Neglect	58%	43%	0%	33%	45%
Sexual Abuse	23%	43%	6%	30%	35%
Psychological Abuse	50%	10%	0%	50%	14%
Threatened Harm	42%	34%	40%	43%	37%
Total	35%	31%	29%	36%	32%

* A child may have more than one type of abuse/neglect per report and may have been reported more than once within the reporting period, but the same maltreatment was counted only once . Therefore, the sum of the abuse/neglect types exceeds the count of children.

CHILD ABUSE AND NEGLECT IN HAWAII, 2012

NUMBER OF UNDUPLICATED CHILDREN BY DISTRICT

	CONFIRMED	NOT CONFIRMED	TOTAL
HAWAII			
N. Hilo	0	0	0
S. Hilo	97	103	200
Puna	99	167	266
Kau	5	13	18
S. Kona	2	9	11
N. Kona	9	15	24
S. Kohala	4	10	14
N. Kohala	2	1	3
Hamakua	0	12	12
Unspecified	83	129	212
Total	301	459	760
OAHU			
Honolulu	233	381	614
Ewa	210	375	585
Wahiawa	56	130	186
Waianae	136	231	367
Waialua	9	24	33
Koolauloa	9	47	56
Koolaupoko	52	177	229
Unspecified	35	83	118
Total	740	1,448	2,188
KAUAI			
Lihue	20	15	35
Koloa	18	16	34
Waimea	5	24	29
Hanalei	0	7	7
Kawaihau	14	32	46
Unspecified	41	93	134
Total	98	187	285
MAUI			
Lahaina	23	29	52
Wailuku	67	79	146
Makawao	46	42	88
Hana	1	0	1
Molokai	12	17	29
Lanai	2	1	3
Unspecified	78	169	247
Total	229	337	566
STATE TOTAL	1,368	2,431	3,799

CHILD ABUSE AND NEGLECT IN HAWAII, 2008-2012

Duplicated Count of Children by County District

DISTRICT	REPORTED					CONFIRMED				
	2008	2009	2010	2011	2012	2008	2009	2010	2011	2012
HAWAII COUNTY	922	1,081	793	786	787	339	422	321	334	306
N. Hilo	0	2	10	2	0	0	2	7	0	0
S. Hilo	168	236	240	221	203	66	86	74	96	97
Puna	143	248	246	205	281	51	100	105	61	100
Kau	26	31	12	20	19	14	25	10	13	6
S. Kona	11	30	20	11	11	4	12	10	9	2
N. Kona	63	56	32	23	24	18	21	11	5	9
S. Kohala	11	29	8	11	15	7	10	7	3	4
N. Kohala	11	6	8	0	3	3	0	3	0	2
Hamakua	10	24	14	29	12	1	5	4	14	0
Unspecified	479	419	203	264	219	175	161	90	133	86
OAHU	2,790	3,753	2,512	2,196	2,278	1,196	1,360	898	782	750
Honolulu	735	1,022	700	530	639	293	348	267	181	234
Ewa	748	1,051	697	583	602	314	367	206	207	210
Wahiawa	191	368	227	173	205	103	146	81	60	60
Waianae	500	556	374	405	389	224	239	162	146	139
Waialua	24	67	52	40	34	9	15	24	17	9
Koolauloa	70	75	39	50	56	37	29	20	22	9
Koolaupoko	368	449	274	294	233	152	154	96	103	54
Unspecified	154	165	149	121	120	64	62	42	46	35
KAUAI COUNTY	316	305	271	225	300	95	96	82	89	103
Lihue	70	60	43	42	35	20	18	15	24	20
Koloa	33	28	40	36	36	6	10	10	13	19
Waimea	52	45	12	20	30	15	8	4	6	5
Hanalei	24	9	12	1	7	13	1	3	0	0
Kawaihau	68	59	47	22	49	19	26	14	11	14
Unspecified	69	104	117	104	143	22	33	36	35	45
MAUI COUNTY	600	800	623	544	583	220	296	274	219	233
Lahaina	44	65	32	36	54	19	24	17	22	23
Wailuku	158	285	250	206	153	60	117	122	85	70
Makawao	133	129	97	104	93	35	50	38	31	46
Hana	6	2	4	13	1	4	0	2	10	1
Molokai	30	38	23	31	29	19	9	15	19	12
Lanai	25	8	11	8	3	14	7	8	2	2
Unspecified	204	273	206	146	250	69	89	72	50	79
STATE TOTAL	4,628	5,939	4,199	3,751	3,948	1,850	2,174	1,575	1,424	1,392

CHILD ABUSE AND NEGLECT IN HAWAII, 2008- 2012

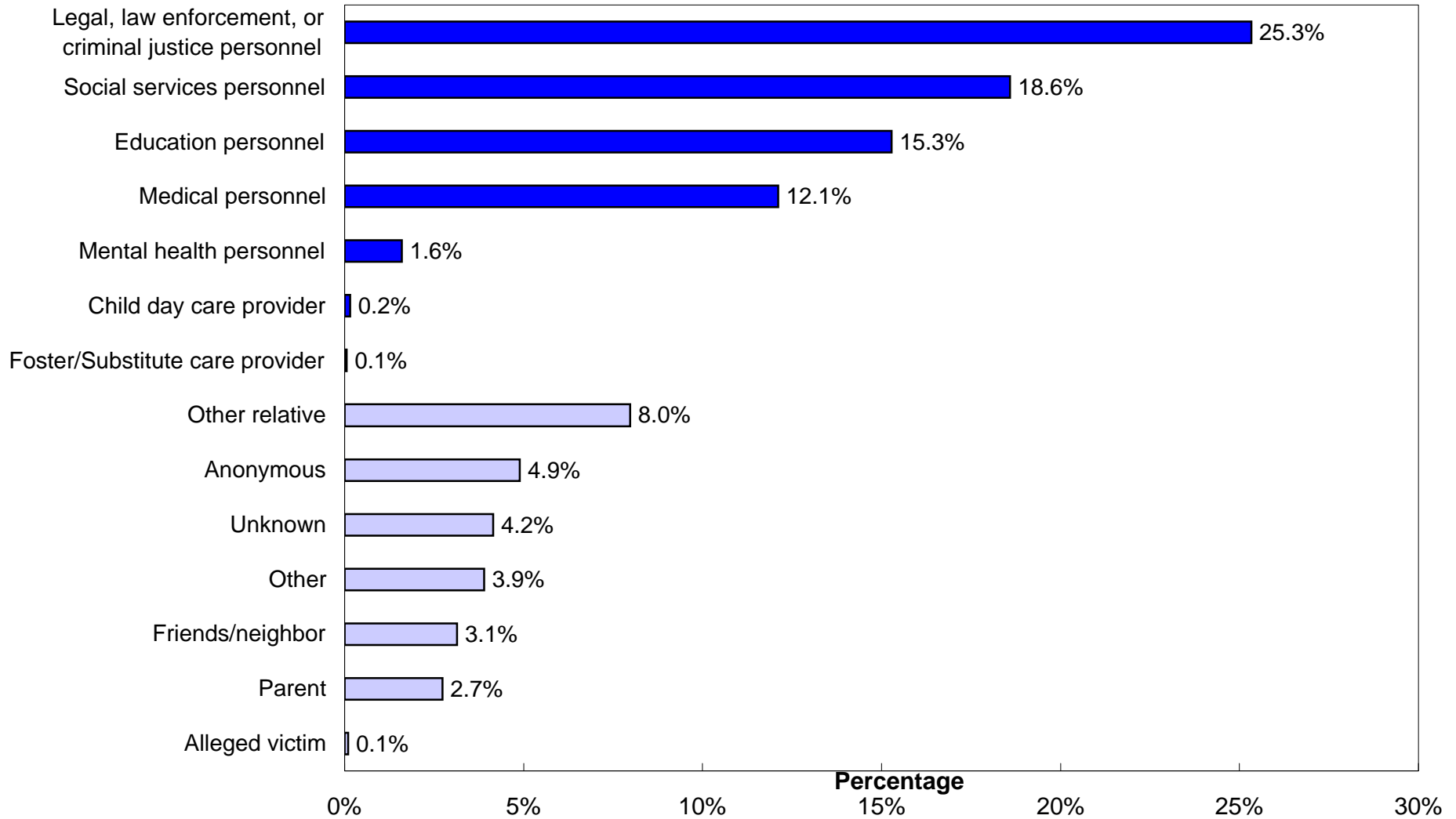
Duplicated Count of Children by Source of Initial Reporter

SOURCE	REPORTED					CONFIRMED				
	2008	2009	2010	2011	2012	2008	2009	2010	2011	2012
MANDATED REPORTERS										
Social services personnel	821	898	699	631	734	314	387	312	254	239
Medical personnel	559	639	491	427	478	306	297	227	211	224
Mental health personnel	76	136	117	85	63	25	53	32	28	21
Legal, law enforcement, or criminal justice personnel	936	1709	1,120	1,024	1000	445	695	445	436	451
Education personnel	919	942	762	599	603	326	281	286	205	201
Child day care provider	10	15	15	13	6	3	4	3	3	2
Foster/Substitute care provider	2	7	2	1	2	0	2	1	0	0
Total Mandatory Reporters	3,323	4,346	3,206	2,780	2,886	1,419	1,719	1,306	1,137	1,138
OTHER REPORTERS										
Alleged victim	3	12	13	7	4	2	6	1	0	2
Parent	107	167	110	120	108	22	43	42	32	32
Other relative	276	372	234	275	315	109	122	80	97	89
Friends/neighbor	159	145	138	124	124	51	30	25	32	16
Anonymous	190	262	154	145	193	69	81	37	38	35
Other	140	208	113	141	154	46	61	30	45	46
Unknown	430	427	231	159	164	132	112	54	43	34
Total Other Reporters	1,305	1,593	993	971	1,062	431	455	269	287	254
STATE TOTAL	4,628	5,939	4,199	3,751	3,948	1,850	2,174	1,575	1,424	1,392

CHILD ABUSE AND NEGLECT IN HAWAII, 2012
Mandated and Non-Mandated Source of Initial Reporter

Sources

Mandated Sources **Non-Mandated Sources**



**CHILD ABUSE AND NEGLECT IN HAWAII, 2008-2012
VICTIM**

CONFIRMED DUPLICATED COUNT OF CHILDREN

AGE	2008	2009	2010	2011	2012
Less Than One Year	294	292	214	224	224
1 Year	130	182	96	116	97
2 Years	113	149	111	86	97
3 Years	99	125	113	108	93
4 Years	87	158	113	96	89
5 Years	99	126	86	104	91
6 Years	110	116	85	84	72
7 Years	91	105	80	62	73
8 Years	92	114	84	39	64
9 Years	93	89	73	54	52
10 Years	82	103	73	55	58
11 Years	87	97	66	43	56
12 Years	68	93	57	65	63
13 Years	75	92	75	63	82
14 Years	99	105	72	67	46
15 Years	85	86	66	55	49
16 Years	91	70	57	61	46
17 Years	54	71	51	38	39
Unknown	1	1	3	4	1
Median age	6	6	6	5	6
TOTAL	1,850	2,174	1,575	1,424	1,392
SEX	2008	2009	2010	2011	2012
Male	899	1,048	732	707	680
Female	943	1,123	839	712	709
Unknown	8	3	4	5	3
TOTAL	1,850	2,174	1,575	1,424	1,392

**CHILD ABUSE AND NEGLECT IN HAWAII, 2008-2012
VICTIM**

CONFIRMED DUPLICATED COUNT OF CHILDREN

RACE	2008	2009	2010	2011	2012
Hawaiian/Part Hawaiian	662	856	613	582	607
Mixed	272	347	302	244	221
White	231	222	174	153	174
Filipino	115	169	76	89	124
Samoaan	100	54	36	32	32
Micronesia					32
Black	40	45	30	42	29
Japanese	34	17	10	20	21
Korean	6	6	3	2	1
American Indian	6	17	7	9	3
Chinese	6	14	10	6	3
Other Pacific Islander	69	106	45	45	24
Hispanic/Spanish	67	88	48	26	39
Vietnamese	3	3	1	6	11
Tongan				5	2
Laotian	2	3	2	1	6
Cambodian	0	1	0	0	1
Alaskan Native	0	1	0	0	0
Unable to Determine	56	50	62	50	53
Missing	181	175	156	112	9
TOTAL	1,850	2,174	1,575	1,424	1,392

SEVERITY OF HARM	2008	2009	2010	2011	2012
Fatal	1	5	0	4	1
No treatment necessary	828	959	725	685	623
Treatment required	212	178	156	146	123
Serious	51	44	28	29	18
Permanent disability	1	3	0	7	0
No injury	757	985	666	553	627
TOTAL	1,850	2,174	1,575	1,424	1,392

CHILD ABUSE AND NEGLECT IN HAWAII, 2012 VICTIM

CONFIRMED UNDUPLICATED COUNT OF CHILDREN*: AGE, SEX, RACE, SEVERITY

AGE	Number	Percent	RACE	Number	Percent
Less Than One Year	219	16.0	MISSING	9	0.7
1 Year	95	6.9	American Indian	3	0.2
2 Years	93	6.8	Black	29	2.1
3 Years	93	6.8	Cambodian	1	0.1
4 Years	86	6.3	Chinese	3	0.2
5 Years	91	6.7	Micronesia	31	2.3
6 Years	71	5.2	Filipino	124	9.1
7 Years	70	5.1	Hawaiian/Part Hawaiian	594	43.4
8 Years	64	4.7	Hispanic/Spanish	39	2.9
9 Years	52	3.8	Japanese	20	1.5
10 Years	57	4.2	Korean	1	0.1
11 Years	56	4.1	Laotian	6	0.4
12 Years	60	4.4	Mixed	214	15.6
13 Years	81	5.9	Other pacific islander	24	1.8
14 Years	45	3.3	Samoan	32	2.3
15 Years	49	3.6	Tongan	2	0.2
16 Years	46	3.4	Unable to determine	53	3.87
17 Years	39	2.9	Vietnamese	11	0.8
Unknown	1	0.1	White	172	12.6
TOTAL	1,368	100.0	TOTAL	1,368	100.0

SEX	Number	Percent	SEVERITY OF HARM	Number	Percent
Male	671	49.1	No treatment necessary	609	44.5
Female	694	50.7	Treatment required	119	8.7
Unknown or missing	3	0.2	Serious	17	1.2
			Fatal	1	0.1
			No injury	622	45.5
TOTAL	1,368	100.0	TOTAL	1,368	100.0

*A child is only counted once, regardless of how many times he/she was reported.
The highest severity level was selected for a child with more than one confirmed severity.

CHILD ABUSE AND NEGLECT IN HAWAII, 2012
Recurrence*

	Frequency	Percent
No Recurrence**	697	99.15
Recurrence***	6	0.85
Total	703	100.0

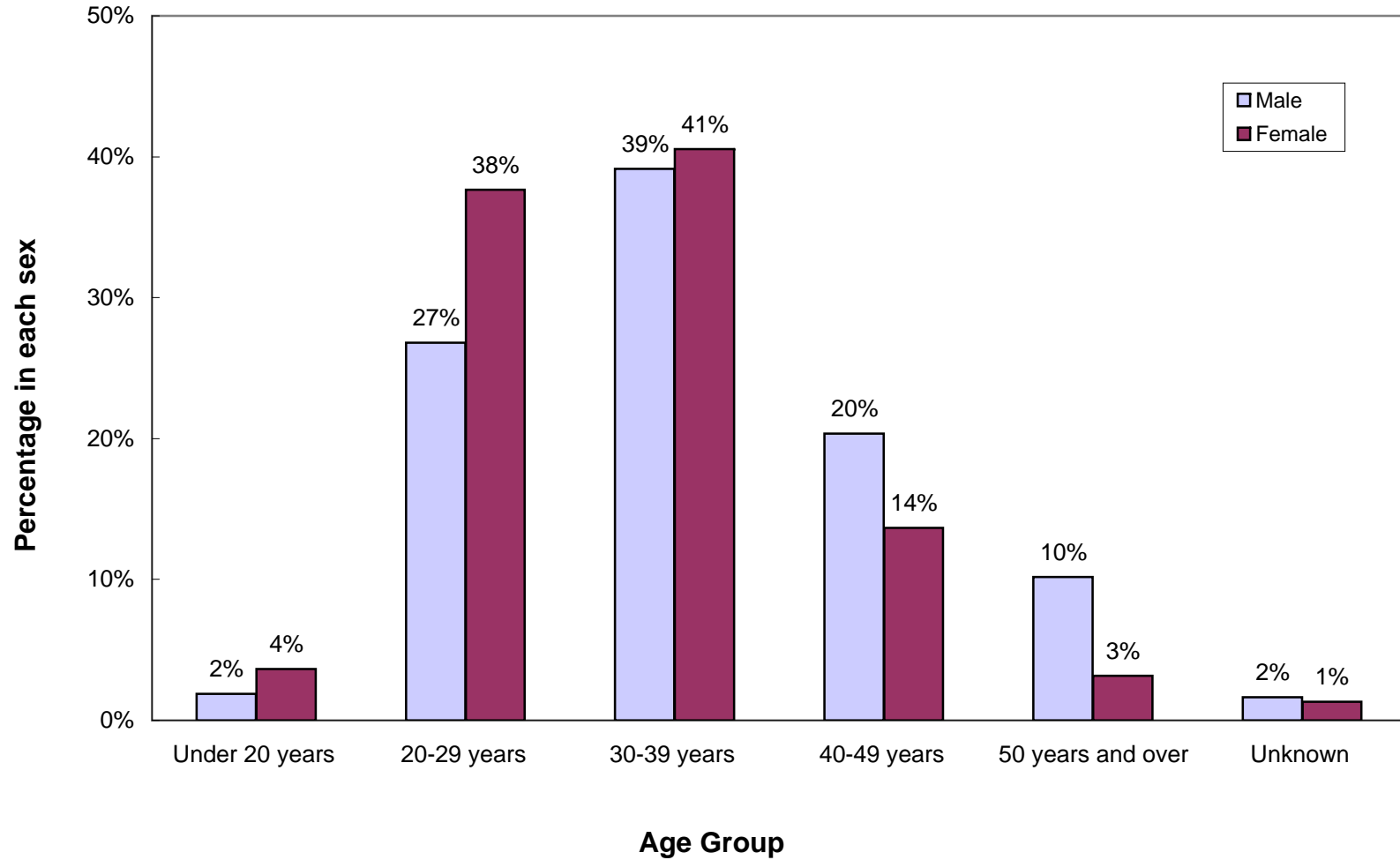
*Only confirmed child victims, whose report year and disposition year were both in 2012 and the initial maltreatment report date fell between January-June, 2012, were included in the recurrence rate calculation.

**Maltreatment occurred between January and June. There was no recurrence within six months.

***First maltreatment occurred between January and June. The second maltreatment occurred within six months.

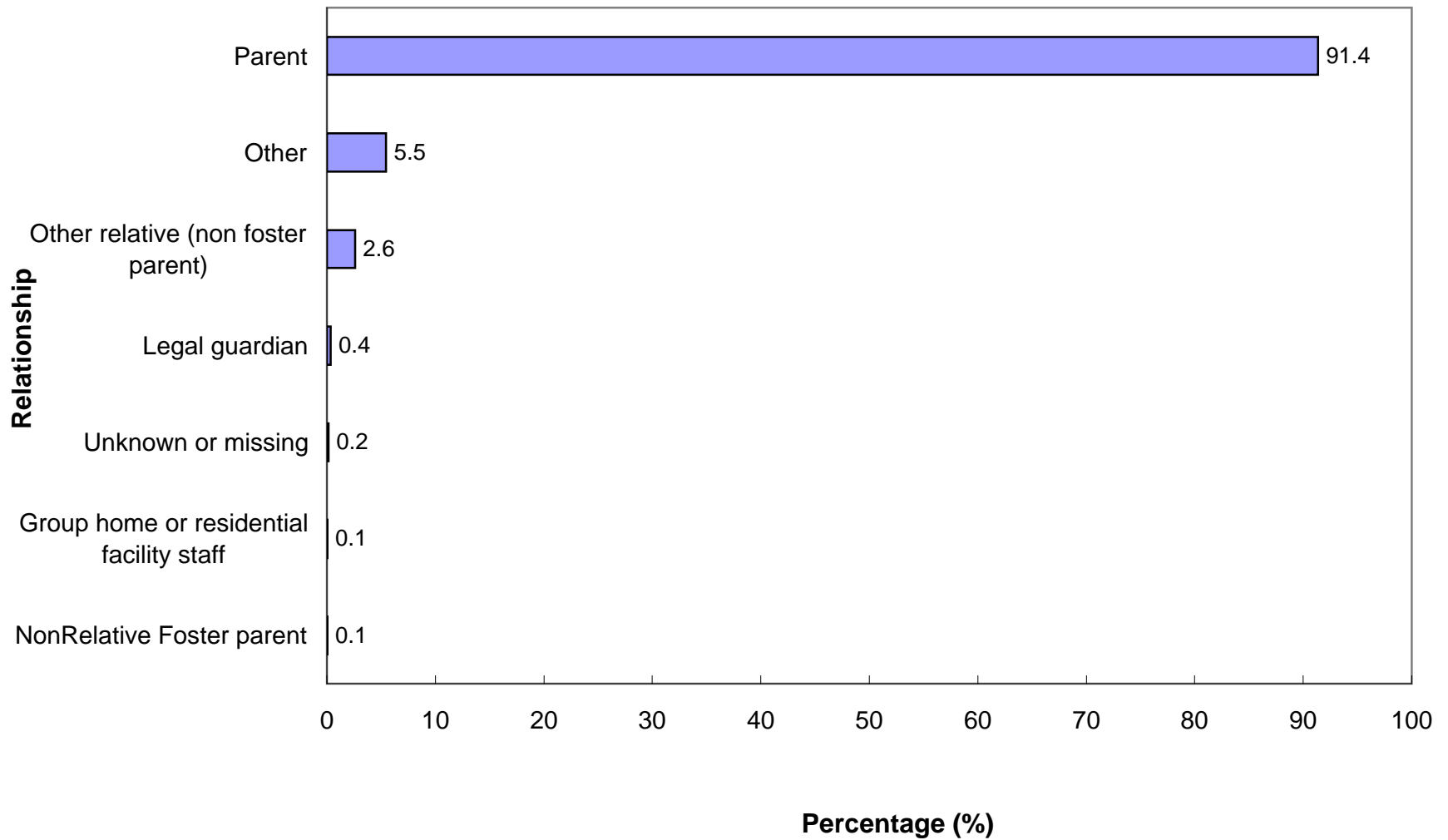
CHILD ABUSE AND NEGLECT IN HAWAII, 2012

Duplicated Count of Perpetrators: Age Group by Sex



CHILD ABUSE AND NEGLECT IN HAWAII, 2012

Relationship of Perpetrator to Confirmed Victim



CHILD ABUSE AND NEGLECT IN HAWAII, 2012

UNDUPLICATED PERPETRATORS FOR CONFIRMED VICTIMS*

AGE	Number	Percent
Under 20 years	46	4.0
20-29 years	359	31.0
30-39 years	419	36.2
40-49 years	219	18.9
50 years and over	87	7.5
Unknown	29	2.5
TOTAL	1,159	100.0

SEX	Number	Percent
Male	545	47.0
Female	611	52.7
Unknown or missing	3	0.3
TOTAL	1,159	100.0

* A perpetrator was counted only once regardless of how many times he/she was associated with a child victim.

CHILD ABUSE AND NEGLECT IN HAWAII, 2008-2012
PERPETRATORS OF CONFIRMED VICTIMS
Duplicated Count of Perpetrators*

RELATIONSHIP TO VICTIM	2008	2009	2010	2011	2012
Parent	2,531	2,922	2,101	1,844	1,839
Other relative	87	117	75	75	52
Relative foster parent	4	13	6	12	0
NonRelative Foster parent	18	13	17	5	1
Group home/Residential facility staff	0	0	0	0	1
Legal guardian	41	52	38	42	7
Other professionals	0	1	0	1	0
Foster parent, relationship unspecified	0	1	0	2	0
Other	110	160	157	119	110
Unknown/missing	19	30	7	5	3
TOTAL	2,810	3,309	2,401	2,105	2,013

PERPETRATOR AGE	2008	2009	2010	2011	2012
Under 20 Years	79	80	38	47	56
20 - 29 Years	908	1,015	795	719	652
30 - 39 Years	1068	1,286	878	749	802
40 - 49 Years	480	615	445	368	339
50 Years or Older	172	263	210	165	131
Unknown	103	50	35	57	33
TOTAL	2,810	3,309	2,401	2,105	2,013

PERPETRATOR SEX	2008	2009	2010	2011	2012
Male	1,249	1511	1,153	1,005	963
Female	1,540	1785	1,240	1,094	1,046
Unknown	21	13	8	6	4
TOTAL	2,810	3,309	2,401	2,105	2,013

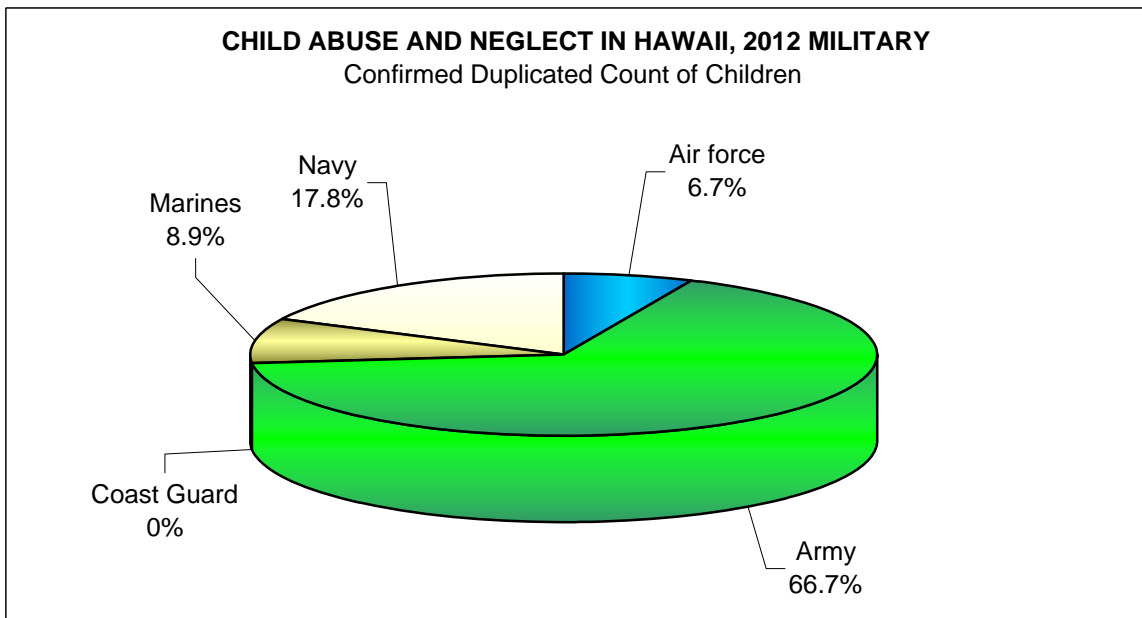
*A perpetrator was counted each time that he/she was associated with a child victim, therefore one perpetrator may have been counted more than once. For example, if an intake had 2 confirmed victims and each victim had 2 perpetrators, then the count of perpetrators would be 4.

CHILD ABUSE AND NEGLECT IN HAWAII, 2008-2012 MILITARY

DUPLICATED COUNT OF CHILDREN

Military Branch	REPORTED					CONFIRMED				
	2008	2009	2010	2011	2012	2008	2009	2010	2011	2012
Air force	6	15	18	13	12	1	4	0	6	3
Army	141	201	148	110	140	66	63	35	42	30
Coast Guard	0	6	0	3	1	0	0	0	0	0
Marines	32	37	13	21	20	18	14	6	6	4
Navy	44	70	48	28	25	21	37	15	8	8
State Total	223	329	227	175	198	106	118	56	62	45

Military Rank	2008	2009	2010	2011	2012	2008	2009	2010	2011	2012
Unspecified	51	113	108	83	95	18	35	18	32	28
Enlisted	157	193	114	91	98	80	77	37	30	17
Non-Commissioned Officer	14	19	5	0	3	8	6	1	0	0
Officer	1	4	0	1	2	0	0	0	0	0
State Total	223	329	227	175	198	106	118	56	62	45



CHILD ABUSE AND NEGLECT IN HAWAII, 2008-2012
MILITARY
Duplicated Count of Children by Source of Initial Reporter

SOURCE	REPORTED					CONFIRMED				
	2008	2009	2010	2011	2012	2008	2009	2010	2011	2012
MANDATED REPORTERS										
Social services personnel	46	61	49	46	65	16	24	11	14	9
Medical personnel	33	36	43	33	36	19	13	13	10	11
Mental health personnel	0	7	4	1	3	0	5	1	0	1
Legal, law enforcement, or criminal justice personnel	75	99	49	44	51	44	32	12	24	20
Education personnel	36	48	34	16	24	8	17	15	9	3
Child day care provider	4	2	1	3	2	2	2	0	3	1
Substitute/Foster care provider	0	0	0	1	0	0	0	0	0	0
Total Mandatory Reporters	194	253	180	144	181	89	93	52	60	45
OTHER REPORTERS										
Alleged victim	0	0	0	0	0	0	0	0	0	0
Parent	1	7	5	5	0	0	1	0	0	0
Other relative	4	7	7	4	0	2	4	0	0	0
Friends/neighbor	9	12	2	4	7	6	6	1	0	0
Anonymous	5	30	11	9	0	5	11	0	1	0
Other	3	6	9	4	6	0	2	2	1	0
Unknown	7	14	13	5	4	4	1	1	0	0
Total Other Reporters	29	76	47	31	17	17	25	4	2	0
STATE TOTAL	223	329	227	175	198	106	118	56	62	45

CHILD ABUSE AND NEGLECT IN HAWAII, 2008-2012
MILITARY

CONFIRMED DUPLICATED COUNT OF CHILDREN: AGE AND SEX

AGE	2008	2009	2010	2011	2012
Less Than One Year	24	16	9	11	4
1 Year	6	15	4	9	4
2 Years	15	9	9	6	4
3 Years	9	5	3	4	7
4 Years	9	12	5	7	4
5 Years	6	10	7	5	4
6 Years	4	3	1	1	3
7 Years	8	6	2	4	0
8 Years	4	5	1	0	1
9 Years	5	5	2	2	3
10 Years	2	3	2	5	0
11 Years	3	6	2	1	3
12 Years	3	4	1	2	0
13 Years	2	6	3	3	2
14 Years	1	3	0	1	2
15 Years	3	3	2	0	1
16 Years	1	3	2	1	1
17 Years	1	4	1	0	2
Unspecified	0	0	0	0	0
	106	118	56	62	45
SEX	2008	2009	2010	2011	2012
Male	42	50	25	32	13
Female	60	68	30	30	31
Unspecified	4	0	1	0	1
STATE TOTAL	106	118	56	62	45

CHILD ABUSE AND NEGLECT IN HAWAII, 2008-2012
MILITARY

CONFIRMED DUPLICATED COUNT OF CHILDREN: RACE AND SEVERITY

RACE	2008	2009	2010	2011	2012
White	49	48	22	22	23
Black	13	23	12	14	6
Mixed	15	26	10	11	2
Filipino	1	0	0	1	1
Hawaiian/Part Hawaiian	6	1	0	0	1
Japanese	1	0	0	3	1
Mexican	0	0	0	0	0
Korean	0	0	0	0	0
Cambodian	0	0	0	0	0
Chinese	0	0	0	0	0
Puerto Rican	0	0	0	0	0
Other pacific islander	0	0	0	0	1
Samoan	0	0	0	0	0
Vietnamese	0	0	0	0	0
American Indian	4	4	0	0	0
Hispanic/Spanish	8	12	4	3	9
Other	0	0	0	0	0
Unable to determine	2	0	1	1	0
Unknown	7	4	7	7	1
STATE TOTAL	106	118	56	62	45

SEVERITY	2008	2009	2010	2011	2012
Fatal	0	2	0	1	0
Permanent Disability	0	0	0	1	0
Serious	2	0	5	3	0
Treatment	15	9	7	12	5
No Treatment	55	51	26	33	16
No Injury	34	56	18	12	24
Unspecified	0	0	0	0	0
STATE TOTAL	106	118	56	62	45