

*A Statistical Report on*

**CHILD ABUSE AND NEGLECT  
IN HAWAII**

**2004**

**Prepared by**

**State of Hawaii  
Department of Human Services  
Management Services Office**

## CHILD ABUSE AND NEGLECT IN HAWAII, 2004 SUMMARY

	HAWAII	OAHU	KAUAI	MAUI	TOTAL
<b>INTAKES</b>					
Confirmed	390	1,149	85	177	1,801
Not Confirmed	376	804	129	308	1,617
Total Reported	766	1,953	214	485	3,418
Percent Confirmed	51%	59%	40%	36%	53%
 <b>DUPLICATED COUNT OF CHILDREN</b>					
Confirmed	780	2,168	124	324	3,396
Not Confirmed	873	1,712	233	609	3,427
Total Reported	1,653	3,880	357	933	6,823
Percent Confirmed	47%	56%	35%	35%	50%
 <b>UNDUPLICATED COUNT OF CHILDREN</b>					
Confirmed	740	2,068	119	311	3,238
Not Confirmed	756	1,566	198	519	3,039
Total Reported	1,496	3,634	317	830	6,277
Percent Confirmed	49%	57%	38%	37%	52%

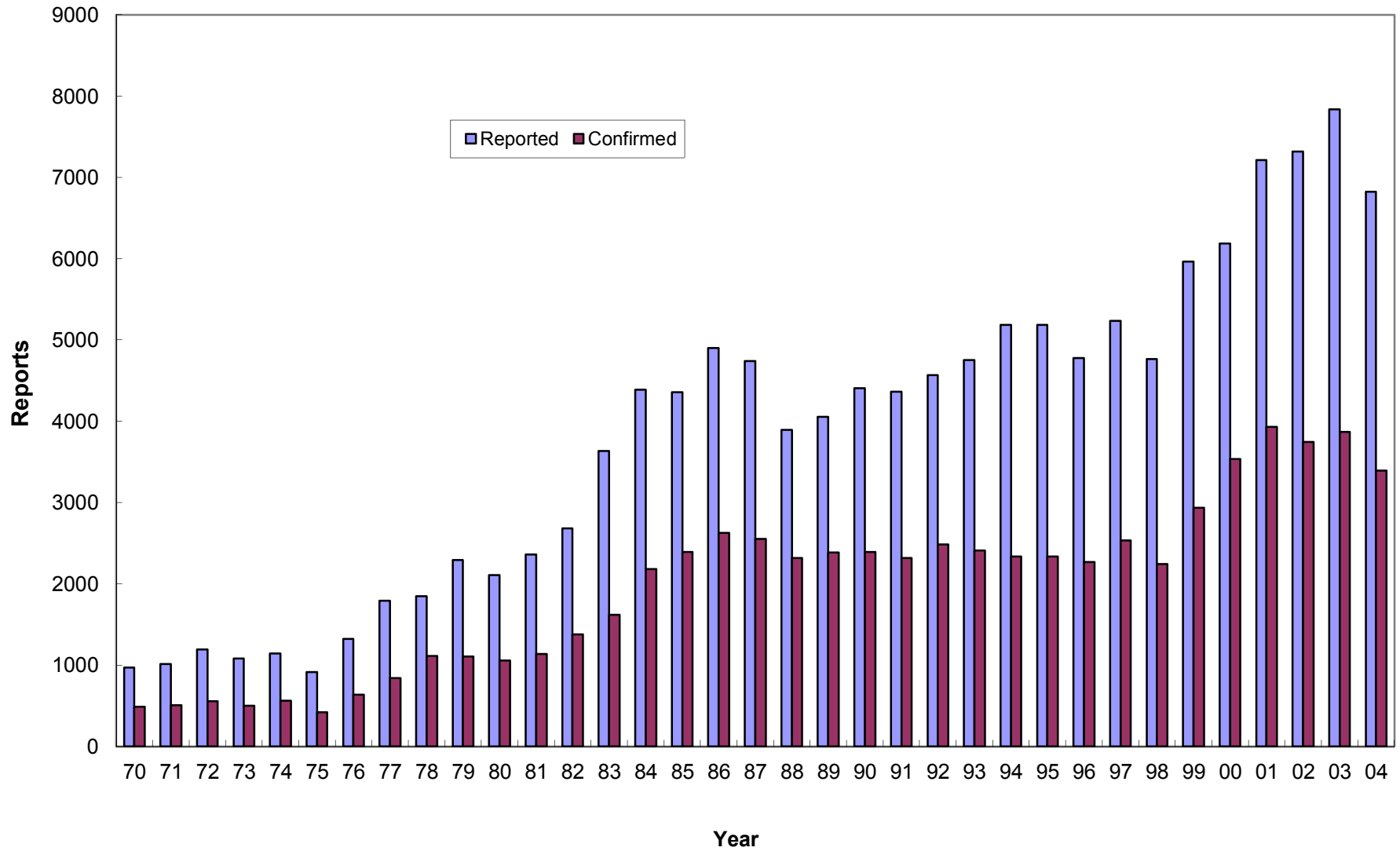
**Intakes:** reports accepted for investigation.

**Duplicated count:** counted by reports, it counts a child each time that he/she was found to be a victim.

**Unduplicated count:** counted by child, it counts a child only once during the reporting period, regardless of how many times the child was reported.

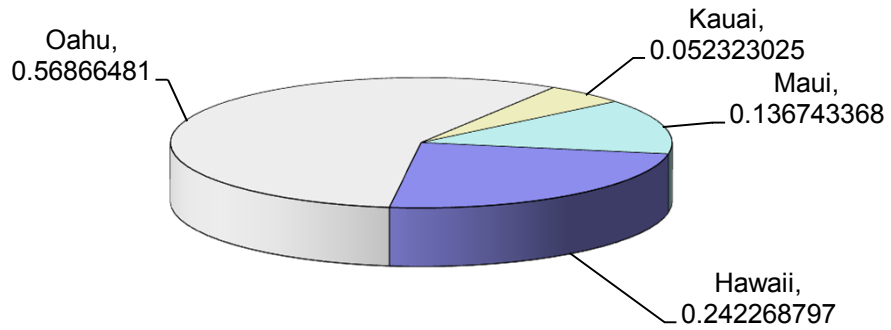
**Note:** In this report, data from 1999 and before were based on report date, data from 2000 and after were based on disposition date.

## CHILD ABUSE AND NEGLECT IN HAWAII, 1970-2004 Duplicated Count of Children

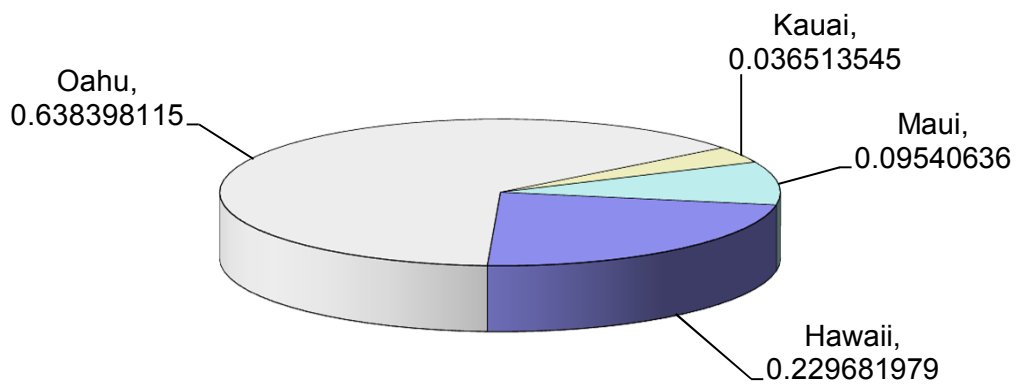


# CHILD ABUSE AND NEGLECT IN HAWAII, 2004

## Duplicated Count of Children



**Total Duplicated Count of Children**

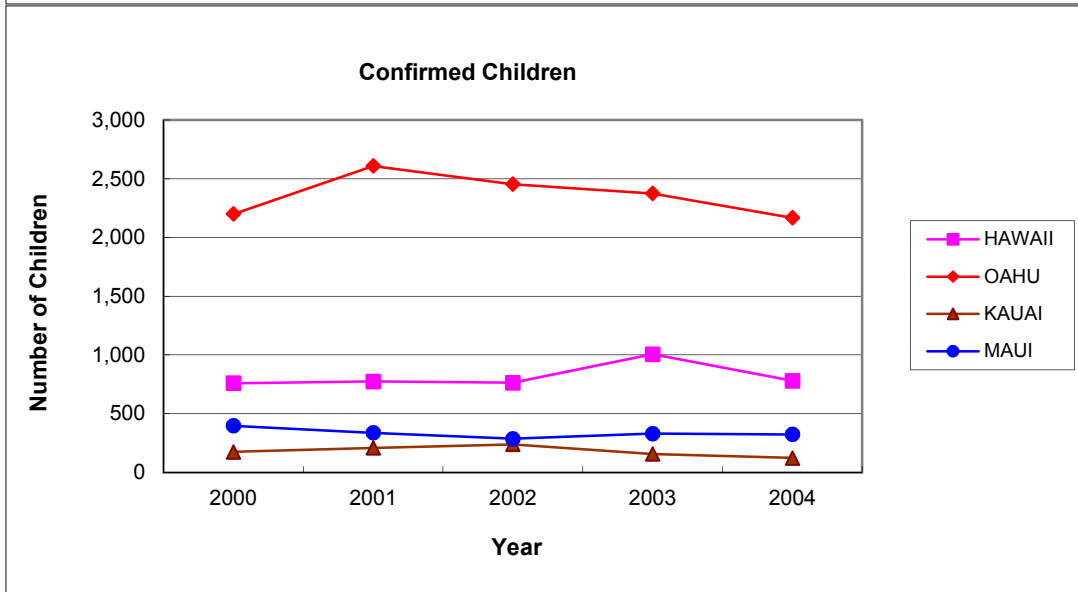
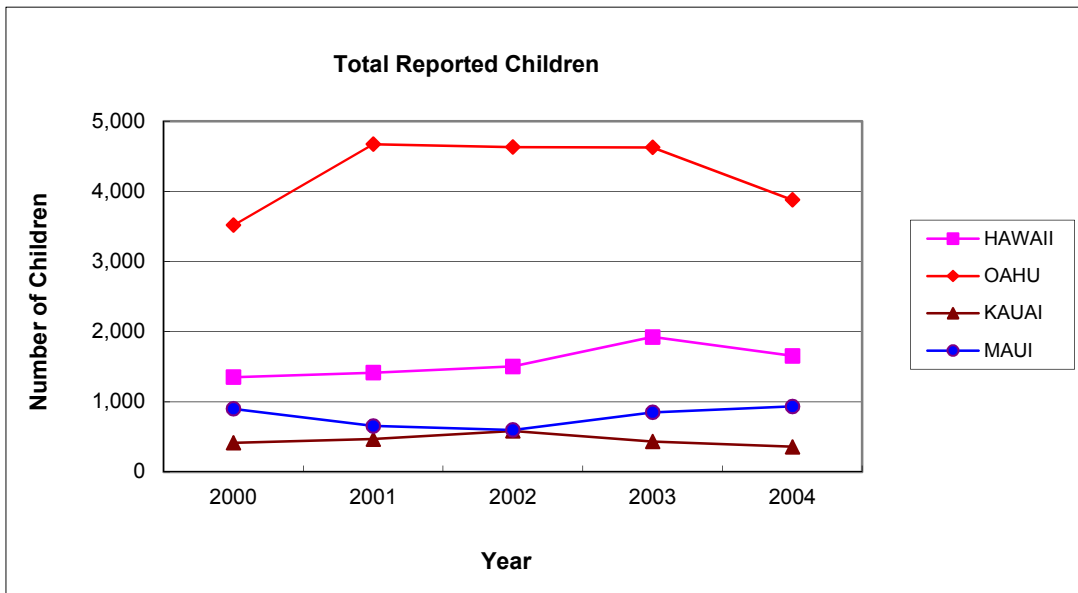


**Confirmed Duplicated Count of Children**

# CHILD ABUSE AND NEGLECT IN HAWAII, 2000-2004

## Duplicated Count of Children by County

DISTRICT	REPORTED					CONFIRMED				
	2000	2001	2002	2003	2004	2000	2001	2002	2003	2004
HAWAII	1,351	1,415	1,504	1,924	1,653	759	774	763	1,006	780
OAHU	3,519	4,672	4,632	4,628	3,880	2,200	2,609	2,454	2,375	2,168
KAUAI	415	468	584	434	357	176	210	240	157	124
MAUI	899	655	598	849	933	398	337	287	330	324
STATE	6,184	7,210	7,318	7,835	6,823	3,533	3,930	3,744	3,868	3,396



## CHILD ABUSE AND NEGLECT IN HAWAII, 2004

### ABUSE AND NEGLECT TYPES BY COUNTY

#### DUPLICATED COUNT OF TYPES FOR EACH CHILD\*

<b>Total Reported:</b>	<b>HAWAII</b>	<b>OAHU</b>	<b>KAUAI</b>	<b>MAUI</b>	<b>Total</b>
Physical Abuse	212	768	59	168	1,207
Neglect	325	801	222	230	1,578
Medical Neglect	41	78	6	23	148
Sexual Abuse	160	247	31	61	499
Psychological Abuse	53	73	39	51	216
Threatened Harm	1,449	3,559	105	840	5,953
<b>Total</b>	<b>2,240</b>	<b>5,526</b>	<b>462</b>	<b>1,373</b>	<b>9,601</b>

#### **Confirmed:**

Physical Abuse	71	277	16	21	385
Neglect	108	320	55	52	535
Medical Neglect	21	36	2	2	61
Sexual Abuse	60	108	16	25	209
Psychological Abuse	22	16	5	7	50
Threatened Harm	689	1,943	41	274	2,947
<b>Total</b>	<b>971</b>	<b>2,700</b>	<b>135</b>	<b>381</b>	<b>4,187</b>

#### **Confirmation Rate by Type**

Physical Abuse	33%	36%	27%	13%	32%
Neglect	33%	40%	25%	23%	34%
Medical Neglect	51%	46%	33%	9%	41%
Sexual Abuse	38%	44%	52%	41%	42%
Psychological Abuse	42%	22%	13%	14%	23%
Threatened Harm	48%	55%	39%	33%	50%
<b>Total</b>	<b>43%</b>	<b>49%</b>	<b>29%</b>	<b>28%</b>	<b>44%</b>

\* All occurrences of Child Abuse and Neglect (CAN) are included here. Each child may have one or more types of abuse and neglect in each report and one child may have been reported more than once. So the sum of the CAN types exceeds the total duplicated

## CHILD ABUSE AND NEGLECT IN HAWAII, 2004

### ABUSE AND NEGLECT TYPES BY COUNTY

#### UNDUPLICATED COUNT OF TYPES FOR EACH CHILD\*

#### Total Reported:

	HAWAII	OAHU	KAUAI	MAUI	Total
Physical Abuse	209	744	56	161	1,170
Neglect	314	781	195	211	1,501
Medical Neglect	41	77	6	23	147
Sexual Abuse	158	242	31	61	492
Psychological Abuse	53	73	39	51	216
Threatened Harm	1,326	3,349	101	754	5,530
<b>Total</b>	<b>2,101</b>	<b>5,266</b>	<b>428</b>	<b>1,261</b>	<b>9,056</b>

#### Confirmed:

Physical Abuse	71	269	16	21	377
Neglect	108	317	55	50	530
Medical Neglect	21	36	2	2	61
Sexual Abuse	58	107	16	25	206
Psychological Abuse	22	16	5	7	50
Threatened Harm	662	1,864	41	263	2,830
<b>Total</b>	<b>942</b>	<b>2,609</b>	<b>135</b>	<b>368</b>	<b>4,054</b>

#### Confirmation Rate by Type

Physical Abuse	34%	36%	29%	13%	32%
Neglect	34%	41%	28%	24%	35%
Medical Neglect	51%	47%	33%	9%	41%
Sexual Abuse	37%	44%	52%	41%	42%
Psychological Abuse	42%	22%	13%	14%	23%
Threatened Harm	50%	56%	41%	35%	51%
<b>Total</b>	<b>45%</b>	<b>50%</b>	<b>32%</b>	<b>29%</b>	<b>45%</b>

\* Unduplicated Child Abuse and Neglect (CAN) Types count each type of abuse and neglect once per child, regardless of how many times each type has been reported for the child. Each child may have one or more types of abuse in the report year. So the sum

## CHILD ABUSE AND NEGLECT IN HAWAII, 2004

### NUMBER OF UNDUPLICATED CHILDREN BY DISTRICT

	CONFIRMED	NOT CONFIRMED	TOTAL
<b>HAWAII</b>			
N. Hilo	7	12	19
S. Hilo	155	267	422
Puna	209	263	472
Kau	23	21	44
S. Kona	23	16	39
N. Kona	80	45	125
S. Kohala	54	18	72
N. Kohala	23	11	34
Hamakua	12	39	51
Unspecified	154	64	218
<b>Total</b>	<b>740</b>	<b>756</b>	<b>1,496</b>
<b>OAHU</b>			
Honolulu	503	403	906
Ewa	379	283	662
Wahiawa	82	58	140
Waianae	440	306	746
Waialua	19	18	37
Koolauloa	20	10	30
Koolaupoko	203	158	361
Unspecified	422	330	752
<b>Total</b>	<b>2,068</b>	<b>1,566</b>	<b>3,634</b>
<b>KAUAI</b>			
Lihue	20	37	57
Koloa	13	35	48
Waimea	17	31	48
Hanalei	11	21	32
Kawaihau	49	66	115
Unspecified	9	8	17
<b>Total</b>	<b>119</b>	<b>198</b>	<b>317</b>
<b>MAUI</b>			
Lahaina	35	55	90
Wailuku	167	234	401
Makawao	57	108	165
Hana	2	17	19
Molokai	12	21	33
Lanai	6	8	14
Unspecified	32	76	108
<b>Total</b>	<b>311</b>	<b>519</b>	<b>830</b>
<b>STATE TOTAL</b>	<b>3,238</b>	<b>3,039</b>	<b>6,277</b>



## CHILD ABUSE AND NEGLECT IN HAWAII, 2000-2004

### Duplicated Count of Children by County District

DISTRICT	REPORTED					CONFIRMED				
	2000	2001	2002	2003	2004	2000	2001	2002	2003	2004
<b>HAWAII COUNTY</b>	<b>1,351</b>	<b>1,415</b>	<b>1,504</b>	<b>1,924</b>	<b>1,653</b>	<b>759</b>	<b>774</b>	<b>763</b>	<b>1,006</b>	<b>780</b>
N. Hilo	11	6	6	8	20	11	2	2	4	7
S. Hilo	291	331	417	564	473	137	189	185	252	160
Puna	367	369	460	594	525	187	176	153	242	216
Kau	39	47	65	40	51	30	24	44	21	30
S. Kona	115	119	101	112	42	68	70	74	79	23
N. Kona	240	287	192	154	134	173	187	152	111	89
S. Kohala	153	115	101	95	78	88	70	72	61	54
N. Kohala	32	45	50	43	34	20	21	33	29	23
Hamakua	33	53	54	52	55	12	14	13	9	12
Unspecified	70	43	58	262	241	33	21	35	198	166
<b>OAHU</b>	<b>3,519</b>	<b>4,672</b>	<b>4,632</b>	<b>4,628</b>	<b>3,880</b>	<b>2,200</b>	<b>2,609</b>	<b>2,454</b>	<b>2,375</b>	<b>2,168</b>
Honolulu	1,078	1,398	1346	1084	959	657	737	719	549	530
Ewa	839	1,161	1091	975	719	524	625	565	510	391
Wahiawa	232	265	293	276	151	172	155	156	128	83
Waianae	694	889	710	660	801	485	553	409	399	472
Waialua	89	108	72	56	39	52	80	48	22	21
Koolauloa	79	105	96	72	34	41	63	44	37	20
Koolaupoko	389	601	484	498	384	208	319	247	213	211
Unspecified	119	145	540	1007	793	61	77	266	517	440
<b>KAUAI COUNTY</b>	<b>415</b>	<b>468</b>	<b>584</b>	<b>434</b>	<b>357</b>	<b>176</b>	<b>210</b>	<b>240</b>	<b>157</b>	<b>124</b>
Lihue	117	131	158	95	68	39	58	61	38	20
Koloa	56	82	83	79	58	26	28	28	21	14
Waimea	40	62	97	55	53	12	27	38	6	17
Hanalei	28	24	56	48	33	10	8	24	23	11
Kawaihau	143	152	178	150	128	67	84	78	66	53
Unspecified	31	17	12	7	17	22	5	11	3	9
<b>MAUI COUNTY</b>	<b>899</b>	<b>655</b>	<b>598</b>	<b>849</b>	<b>933</b>	<b>398</b>	<b>337</b>	<b>287</b>	<b>330</b>	<b>324</b>
Lahaina	61	41	48	55	109	21	17	16	22	35
Wailuku	444	366	292	423	447	197	187	150	151	174
Makawao	192	129	164	204	194	74	60	64	65	60
Hana	9	17	2	14	20	5	8	1	8	2
Molokai	86	52	51	89	40	49	30	40	56	14
Lanai	27	15	4	17	14	16	13	4	17	6
Unspecified	80	35	37	47	109	36	22	12	11	33
<b>STATE TOTAL</b>	<b>6,184</b>	<b>7,210</b>	<b>7,318</b>	<b>7,835</b>	<b>6,823</b>	<b>3,533</b>	<b>3,930</b>	<b>3,744</b>	<b>3,868</b>	<b>3,396</b>

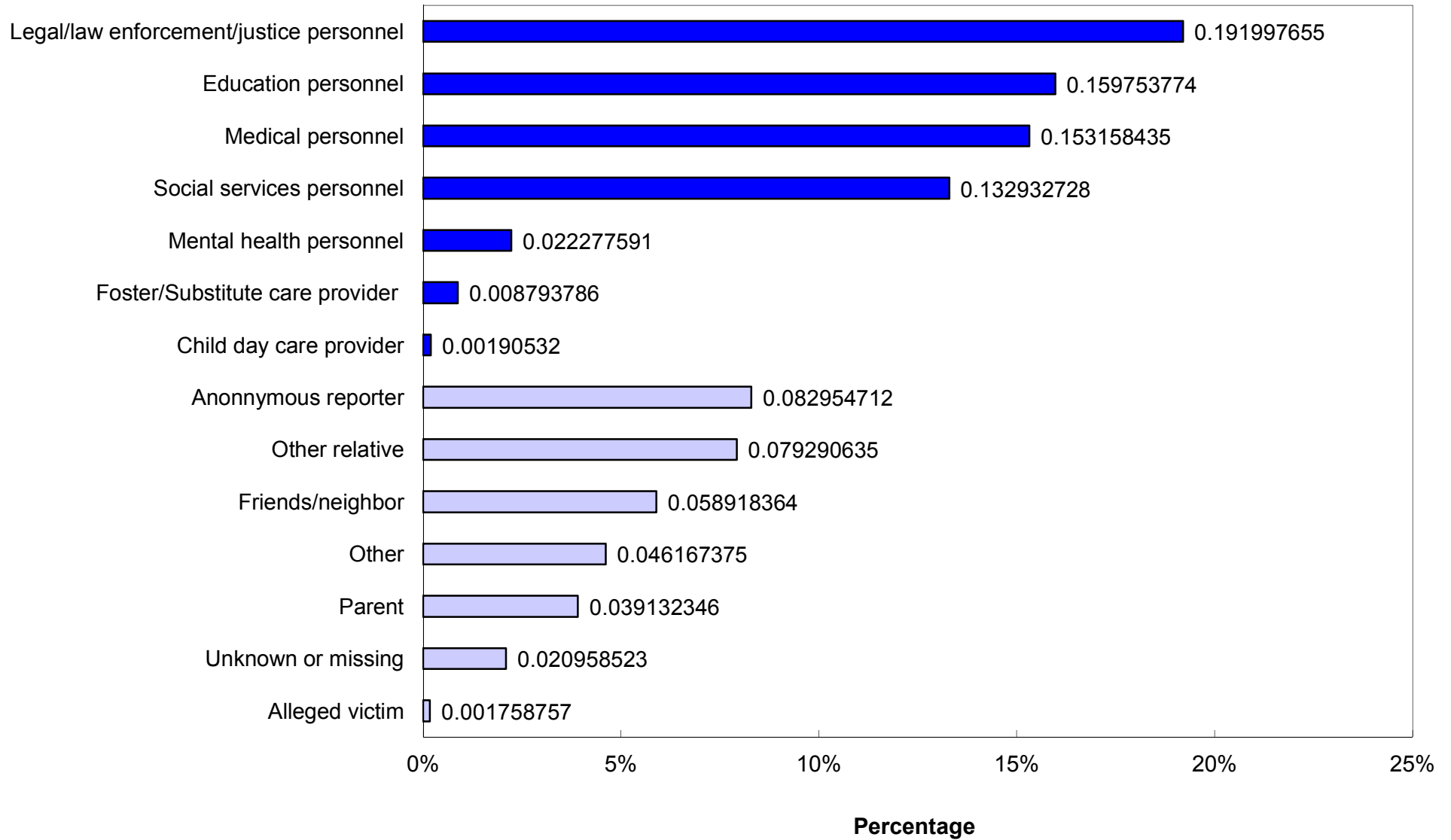
## CHILD ABUSE AND NEGLECT IN HAWAII, 2000- 2004

### Duplicated Count of Children by Source of Initial Reporter

SOURCE	REPORTED					CONFIRMED				
	2000	2001	2002	2003	2004	2000	2001	2002	2003	2004
<b>MANDATED REPORTERS</b>										
Social services personnel	767	1,035	866	960	907	424	546	438	457	423
Medical personnel	808	1,035	1155	1152	1045	590	719	759	717	662
Mental health personnel	111	210	234	229	152	69	106	98	103	74
Legal, law enforcement, or criminal justice personnel	1,098	1,128	1175	1256	1310	770	703	674	729	784
Education personnel	905	1,069	1032	1138	1090	495	575	492	555	500
Child day care provider	10	17	11	32	13	4	3	5	27	6
Foster/Substitute care provider	34	21	47	58	60	28	16	22	30	37
<b>Total Mandatory Reporters</b>	<b>3,733</b>	<b>4,515</b>	<b>4,520</b>	<b>4,825</b>	<b>4,577</b>	<b>2,380</b>	<b>2,668</b>	<b>2,488</b>	<b>2,618</b>	<b>2,486</b>
<b>OTHER REPORTERS</b>										
Alleged victim	45	10	38	25	12	23	5	16	6	5
Parent	186	370	357	339	267	80	182	155	153	112
Other relative	363	608	489	576	541	207	328	254	320	251
Friends/neighbor	262	339	249	298	402	119	171	76	84	153
Perpetrator	0	0	1	2	0	0	0	0	0	0
Anonymous	477	608	637	698	566	173	248	236	230	205
Other	309	468	411	477	315	145	193	179	150	112
Unknown	809	292	616	595	143	406	135	340	307	72
<b>Total Other Reporters</b>	<b>2,451</b>	<b>2,695</b>	<b>2,798</b>	<b>3,010</b>	<b>2,246</b>	<b>1,153</b>	<b>1,262</b>	<b>1,256</b>	<b>1,250</b>	<b>910</b>
<b>STATE TOTAL</b>	<b>6,184</b>	<b>7,210</b>	<b>7,318</b>	<b>7,835</b>	<b>6,823</b>	<b>3,533</b>	<b>3,930</b>	<b>3,744</b>	<b>3,868</b>	<b>3,396</b>

**CHILD ABUSE AND NEGLECT IN HAWAII, 2004**  
**Mandated and Non-Mandated Source of Initial Reporter**

**Sources**      ■ Mandated Sources      □ Non-Mandated Sources



**CHILD ABUSE AND NEGLECT IN HAWAII, 2000-2004  
VICTIM**

**CONFIRMED DUPLICATED COUNT OF CHILDREN**

<b>AGE</b>	<b>2000</b>	<b>2001</b>	<b>2002</b>	<b>2003</b>	<b>2004</b>
Less Than One Year	470	563	548	535	534
1 Year	212	272	218	231	225
2 Years	207	258	199	235	226
3 Years	197	224	215	230	200
4 Years	200	226	211	225	158
5 Years	201	225	221	194	174
6 Years	194	207	204	215	183
7 Years	208	233	208	208	161
8 Years	199	199	210	183	177
9 Years	211	191	189	220	158
10 Years	197	226	193	198	156
11 Years	180	166	202	202	157
12 Years	160	192	183	216	165
13 Years	154	184	185	182	192
14 Years	189	173	155	190	175
15 Years	120	142	154	149	145
16 Years	133	147	135	140	129
17 Years	73	85	99	93	63
Unknown	28	17	15	22	18
Median age	7	7	7	7	6
<b>TOTAL</b>	<b>3,533</b>	<b>3,930</b>	<b>3,744</b>	<b>3,868</b>	<b>3,396</b>
<b>SEX</b>	<b>2000</b>	<b>2001</b>	<b>2002</b>	<b>2003</b>	<b>2004</b>
Male	1,702	1,890	1,829	1,927	1,646
Female	1,816	2,029	1,901	1,920	1,739
Unknown	15	11	14	21	11
<b>TOTAL</b>	<b>3,396</b>	<b>3,533</b>	<b>3,930</b>	<b>3,744</b>	<b>3,396</b>

**CHILD ABUSE AND NEGLECT IN HAWAII, 2000-2004  
VICTIM**

**CONFIRMED DUPLICATED COUNT OF CHILDREN**

<b>RACE</b>	<b>2000</b>	<b>2001</b>	<b>2002</b>	<b>2003</b>	<b>2004</b>
Hawaiian/Part Hawaiian	1,456	1,718	1,621	1,588	1,302
Mixed	563	663	508	486	455
White	378	311	398	395	352
Filipino	260	264	243	223	230
Samoan	124	121	121	103	127
Black	61	59	61	83	78
Japanese	73	43	52	49	46
Korean	13	19	9	7	16
American Indian	15	31	20	27	25
Chinese	8	27	5	16	14
Other Pacific Islander	55	60	84	79	66
Hispanic/Spanish	69	80	59	62	95
Vietnamese	6	20	20	6	9
Laotian	7	3	2	3	5
Cambodian	2	6	2	0	2
Alaskan Native					5
Unable to Determine	173	87	93	115	108
Missing	270	418	446	626	461
<b>TOTAL</b>	<b>3,533</b>	<b>3,930</b>	<b>3,744</b>	<b>3,868</b>	<b>3,396</b>

<b>SEVERITY OF HARM</b>	<b>2000</b>	<b>2001</b>	<b>2002</b>	<b>2003</b>	<b>2004</b>
Fatal	3	3	7	7*	6
Permanent disability	2	3	6	0	1
Serious	138	166	118	51	79
Treatment required	527	609	522	568	412
No treatment necessary	2,234	2,447	2,388	2,153	1,919
No injury	613	701	703	1,089	979
Unspecified	16	1	0	0	0
<b>TOTAL</b>	<b>3,533</b>	<b>3,930</b>	<b>3,744</b>	<b>3,868</b>	<b>3,396</b>

\*There were six victims, one of them was reported twice.

## CHILD ABUSE AND NEGLECT IN HAWAII, 2004 VICTIM

### CONFIRMED UNDUPLICATED COUNT OF CHILDREN\*: AGE, SEX, RACE

AGE	Number	Percent	RACE	Number	Percent
Less Than One Year	521	16.1	Hawaiian/Part Hawaiian	1,221	37.7
1 Year	217	6.7	MISSING	453	14.0
2 Years	212	6.5	Mixed	438	13.5
3 Years	185	5.7	White	331	10.2
4 Years	149	4.6	Filipino	227	7.0
5 Years	164	5.1	Samoan	120	3.7
6 Years	176	5.4	Unable to determine	107	3.3
7 Years	149	4.6	Hispanic/Spanish	88	2.7
8 Years	171	5.3	Black	76	2.4
9 Years	150	4.6	Other pacific islander	65	2.0
10 Years	153	4.7	Japanese	44	1.4
11 Years	151	4.7	American Indian	23	0.7
12 Years	157	4.8	Korean	14	0.4
13 Years	181	5.6	Chinese	13	0.4
14 Years	166	5.1	Vietnamese	9	0.3
15 Years	134	4.1	Laotian	4	0.1
16 Years	126	3.9	Alaskan Native	3	0.1
17 Years	58	1.8	Cambodian	2	0.1
Unknown	18	0.6			
<b>TOTAL</b>	<b>3,238</b>	<b>100.0</b>	<b>TOTAL</b>	<b>3,238</b>	<b>100.0</b>

SEX	Number	Percent
Male	1,574	48.6
Female	1,653	51.1
Unknown	11	0.3
<b>TOTAL</b>	<b>3,238</b>	<b>100.0</b>

\*A child is only counted once, regardless of how many times he/she was reported.

## CHILD ABUSE AND NEGLECT IN HAWAII, 2004

### Recurrence\*

	Frequency	Percent
<b>No Recurrence**</b>	1,776	95.3
<b>Recurrence***</b>	87	4.7
<b>Total</b>	<b>1,863</b>	<b>100.0</b>

\*Only confirmed child victims, whose report year and disposition year were both in 2004 and the initial maltreatment report date fell between January-June, 2004, were included in the recurrence rate calculation.

\*\*Maltreatment occurred between January and June. There was no recurrence within six months.

\*\*\*First maltreatment occurred between January and June. The second maltreatment occurred within six months.

### Recurrence by Maltreatment Type\*

Maltreatment in 1st report	Maltreatment in 2nd report	Frequency	Percent
HARM_CON	HARM_CON	2	2.3
HARM_CON	TH_CON	5	5.8
HARM_CON	TH_CON_HARM_UNC	2	2.3
TH_CON	HARM_CON	6	6.9
TH_CON	TH_CON	29	33.3
TH_CON	TH_CON_HARM_CON	9	10.3
TH_CON	TH_CON_HARM_UNC	2	2.3
TH_CON	TH_UNC_HARM_CON	3	3.5
TH_CON_HARM_CON	HARM_CON	3	3.5
TH_CON_HARM_CON	TH_CON	2	2.3
TH_CON_HARM_CON	TH_CON_HARM_CON	5	5.8
TH_CON_HARM_CON	TH_UNC_HARM_CON	2	2.3
TH_CON_HARM_UNC	HARM_CON	3	3.5
TH_CON_HARM_UNC	TH_CON	8	9.2
TH_CON_HARM_UNC	TH_CON_HARM_CON	2	2.3
TH_CON_HARM_UNC	TH_CON_HARM_UNC	1	1.2
TH_UNC_HARM_CON	TH_CON_HARM_CON	3	3.5
<b>Total</b>		<b>87</b>	<b>100.0</b>

\*Only child victims with recurrence within 6 months were included.

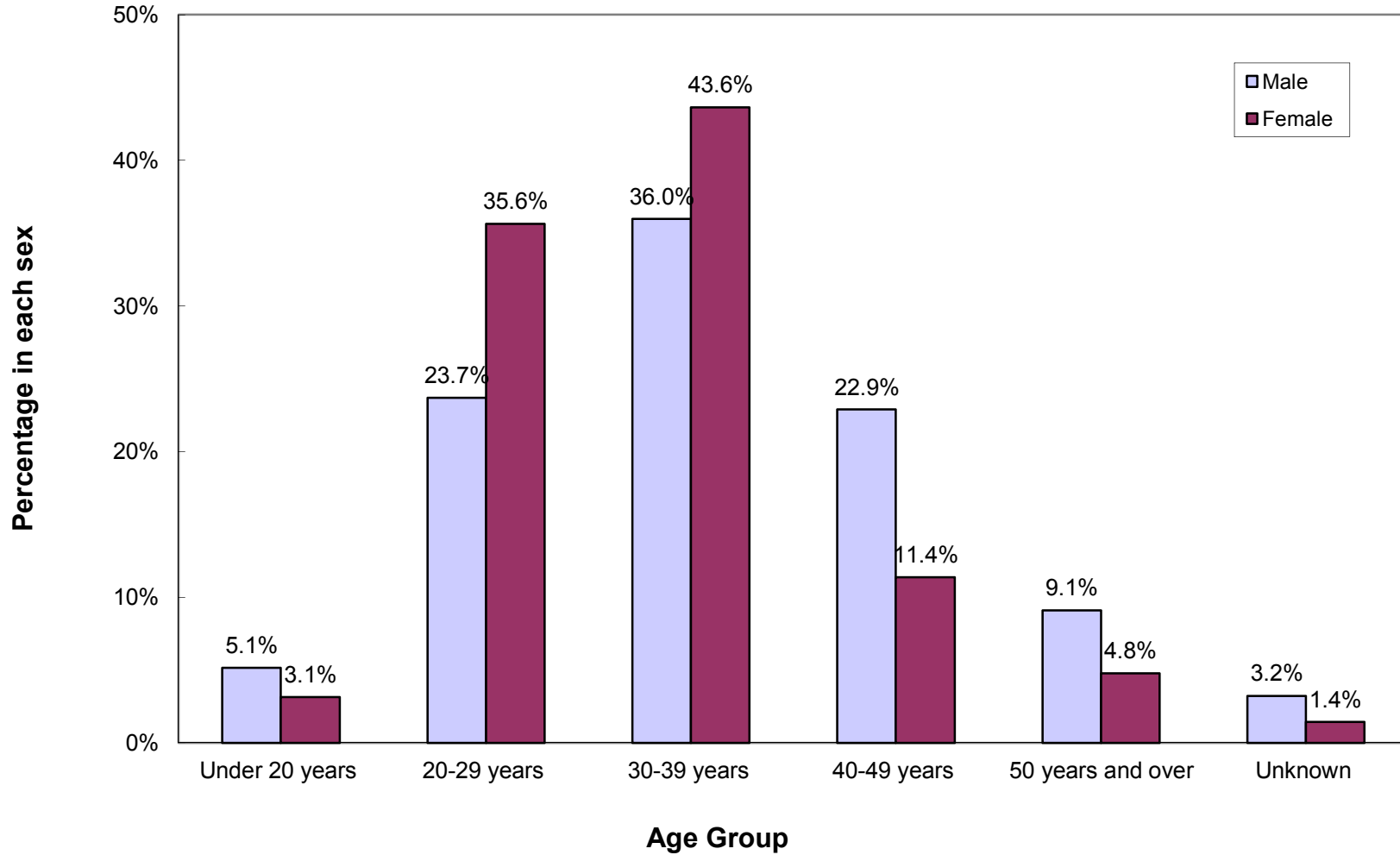
Type: HARM= physical abuse, neglect, medical neglect, sexual abuse, and psychological abuse, alone or combined.

TH= Threatened harm.

Level: CON=Confirmed, UNC=Not confirmed, UNK=unknwon.

# CHILD ABUSE AND NEGLECT IN HAWAII, 2004

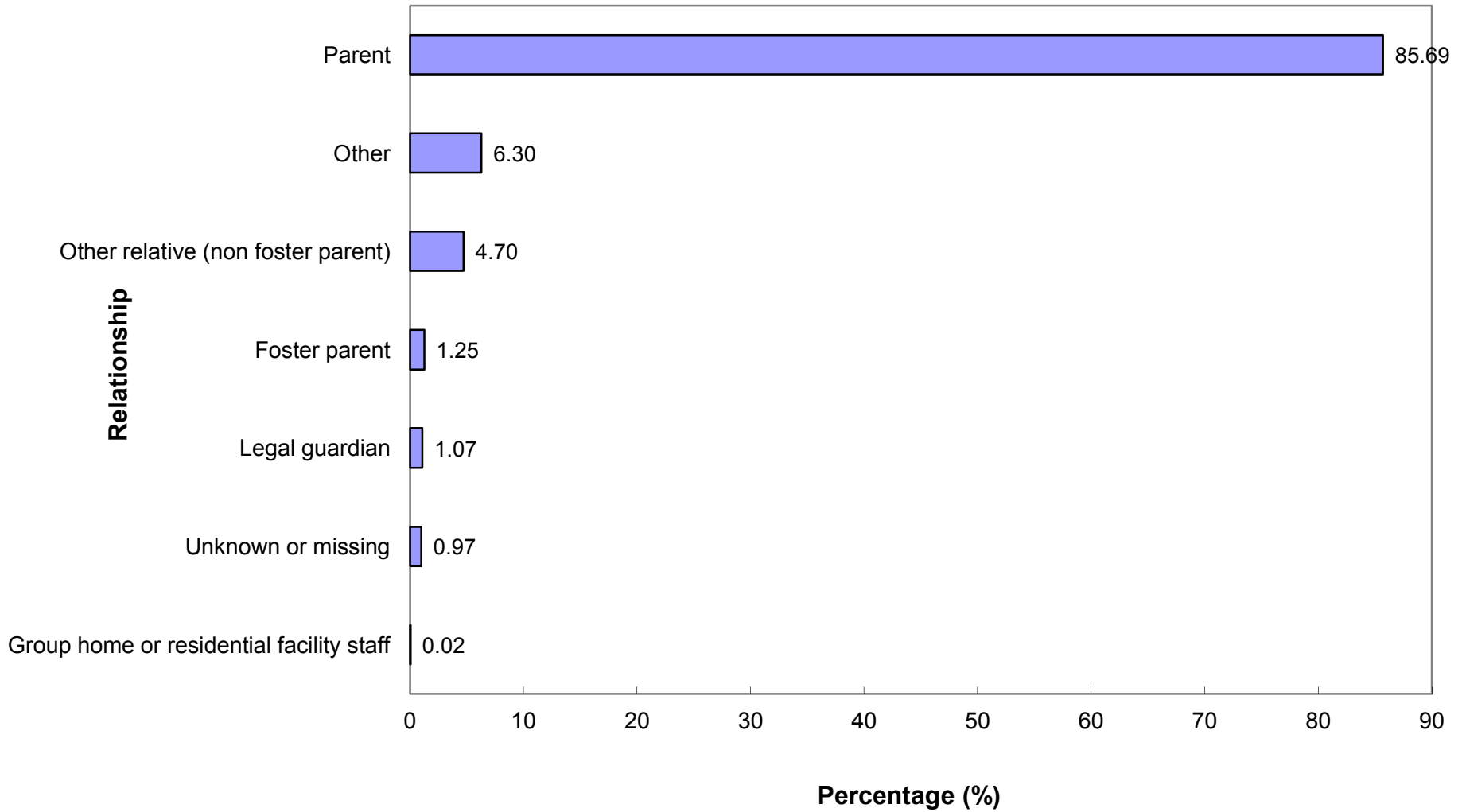
## Duplicated Count of Perpetrators: Age Group by Sex





# CHILD ABUSE AND NEGLECT IN HAWAII, 2004

## Relationship of Perpetrator to Confirmed Victim



## CHILD ABUSE AND NEGLECT IN HAWAII, 2004

### UNDUPLICATED PERPETRATORS FOR CONFIRMED VICTIMS\*

<b>AGE</b>	<b>Number</b>	<b>Percent</b>
Under 20 years	140	5.6
20-29 years	783	31.2
30-39 years	902	35.9
40-49 years	429	17.1
50 years and over	172	6.8
Unknown	87	3.5
<b>TOTAL</b>	<b>2,513</b>	<b>100.0</b>

<b>SEX</b>	<b>Number</b>	<b>Percent</b>
Male	1,107	44.1
Female	1,393	55.4
Unknown or missing	13	0.5
<b>TOTAL</b>	<b>2,513</b>	<b>100.0</b>

\* A perpetrator was counted only once regardless of how many times he/she was associated with a child victim.

**CHILD ABUSE AND NEGLECT IN HAWAII, 2000-2004**  
**PERPETRATORS OF CONFIRMED VICTIMS**  
**Duplicated Count of Perpetrators\***

<b>RELATIONSHIP TO VICTIM</b>	<b>2000</b>	<b>2001</b>	<b>2002</b>	<b>2003</b>	<b>2004</b>
Parent	3,925	4,714	4,617	5,040	4,244
Other relative	307	301	281	249	233
Foster parent	91	89	63	115	62
Group home/Residential facility staff	6	48	8	6	1
Legal guardian	21	33	51	39	53
Other	320	368	354	352	312
Unknown/missing	68	56	46	52	48
<b>TOTAL</b>	<b>4,738</b>	<b>5,609</b>	<b>5,420</b>	<b>5,853</b>	<b>4,953</b>

<b>PERPETRATOR AGE</b>	<b>2000</b>	<b>2001</b>	<b>2002</b>	<b>2003</b>	<b>2004</b>
Under 20 Years	199	265	223	188	199
20 - 29 Years	1,365	1,650	1,548	1,737	1,500
30 - 39 Years	2,013	2,293	2,269	2,467	1,988
40 - 49 Years	761	921	879	1,008	814
50 Years or Older	229	281	292	296	331
Unknown	171	199	209	157	121
<b>TOTAL</b>	<b>4,738</b>	<b>5,609</b>	<b>5,420</b>	<b>5,853</b>	<b>4,953</b>

<b>PERPETRATOR SEX</b>	<b>2000</b>	<b>2001</b>	<b>2002</b>	<b>2003</b>	<b>2004</b>
Male	2,117	2,467	2,335	2,578	2,199
Female	2,588	3,111	3,045	3,266	2,738
Unknown	33	31	40	9	16
<b>TOTAL</b>	<b>4,738</b>	<b>5,609</b>	<b>5,420</b>	<b>5,853</b>	<b>4,953</b>

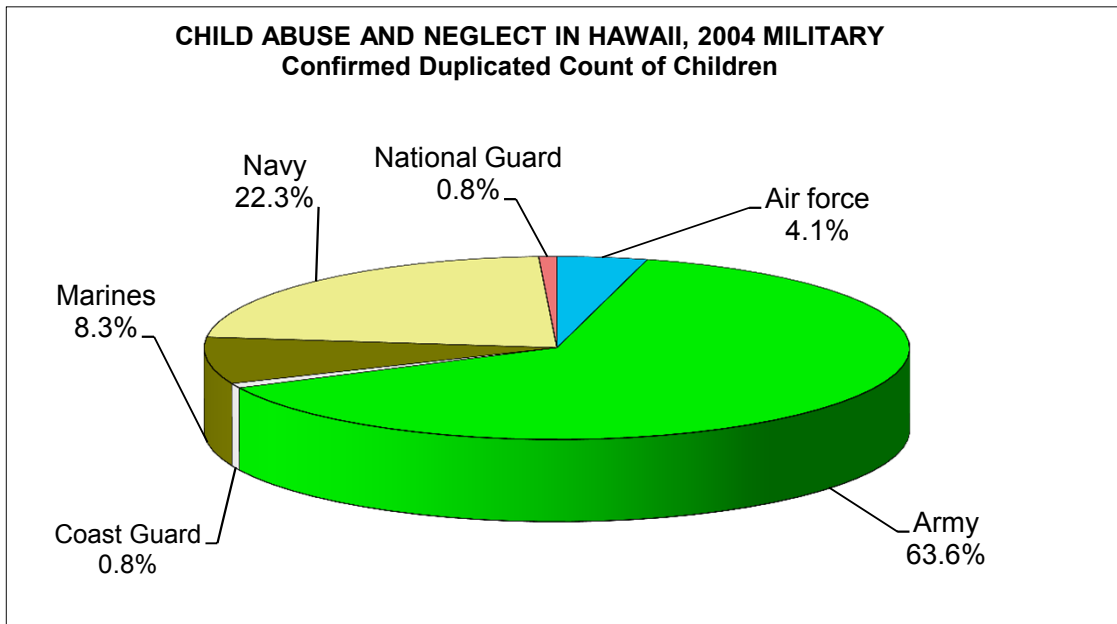
\*A perpetrator was counted each time that he/she was associated with a child victim, therefore one perpetrator may have been counted more than once.

## CHILD ABUSE AND NEGLECT IN HAWAII, 2000-2004 MILITARY

### DUPLICATED COUNT OF CHILDREN

Military Branch	REPORTED					CONFIRMED				
	2000	2001	2002	2003	2004	2000	2001	2002	2003	2004
Air force	11	23	9	14	10	3	3	6	6	5
Army	88	97	130	195	117	53	64	70	104	77
Coast Guard	1	3	1	0	3	1	3	0	0	1
Marines	23	22	21	19	21	10	13	10	11	10
Navy	67	79	95	127	62	29	37	50	56	27
National Guard	0	0	4	0	1	0	0	2	0	1
<b>State Total</b>	<b>190</b>	<b>224</b>	<b>260</b>	<b>355</b>	<b>214</b>	<b>96</b>	<b>120</b>	<b>138</b>	<b>177</b>	<b>121</b>

Military Rank	2000	2001	2002	2003	2004	2000	2001	2002	2003	2004
Unspecified	74	79	126	158	72	25	32	58	66	44
Enlisted	111	127	121	179	129	68	78	74	100	70
Non-Commissioned	0	14	11	11	11	0	8	6	8	7
Officer	5	4	2	7	2	3	2	0	3	0
<b>State Total</b>	<b>190</b>	<b>224</b>	<b>260</b>	<b>355</b>	<b>214</b>	<b>96</b>	<b>120</b>	<b>138</b>	<b>177</b>	<b>121</b>



**CHILD ABUSE AND NEGLECT IN HAWAII, 2004  
MILITARY**

**ABUSE AND NEGLECT TYPES PER CHILD**

<b>Total Reported</b>	<b>DUPLICATED COUNT OF TYPES*</b>				<b>UNDUPLICATED COUNT OF TYPES**</b>			
	<b>HAWAII</b>	<b>OAHU</b>	<b>MAUI</b>	<b>TOTAL</b>	<b>HAWAII</b>	<b>OAHU</b>	<b>MAUI</b>	<b>TOTAL</b>
Physical Abuse	0	63	0	63	0	62	0	62
Neglect	0	55	0	55	0	55	0	55
Medical Neglect	0	4	0	4	0	4	0	4
Sexual Abuse	0	10	0	10	0	10	0	10
Psychological Abuse	0	2	0	2	0	2	0	2
Threatened Harm	0	191	0	191	0	188	0	188
<b>Total</b>	<b>0</b>	<b>325</b>	<b>0</b>	<b>325</b>	<b>0</b>	<b>321</b>	<b>0</b>	<b>321</b>

**Confirmed**

Physical Abuse	0	22	0	22	0	22	0	22
Neglect	0	18	0	18	0	18	0	18
Medical Neglect	0	2	0	2	0	2	0	2
Sexual Abuse	0	6	0	6	0	6	0	6
Psychological Abuse	0	0	0	0	0	0	0	0
Threatened Harm	0	105	0	105	0	103	0	103
<b>Total</b>	<b>0</b>	<b>153</b>	<b>0</b>	<b>153</b>	<b>0</b>	<b>151</b>	<b>0</b>	<b>151</b>

**Confirmation Rate by Type**

Physical Abuse	0%	35%	0%	35%	0%	35%	0%	35%
Neglect	0%	33%	0%	33%	0%	33%	0%	33%
Medical Neglect	0%	50%	0%	50%	0%	50%	0%	50%
Sexual Abuse	0%	60%	0%	60%	0%	60%	0%	60%
Psychological Abuse	0%	0%	0%	0%	0%	0%	0%	0%
Threatened Harm	0%	55%	0%	55%	0%	55%	0%	55%
<b>Total</b>	<b>0%</b>	<b>47%</b>	<b>0%</b>	<b>47%</b>	<b>0%</b>	<b>47%</b>	<b>0%</b>	<b>47%</b>

\* All occurrences of Child Abuse and Neglect (CAN) are included here. Each child may have one or more types of abuse and neglect in each report and one child may have been reported more than once. So the sum of the CAN types exceeds the total duplicated

\* \*Unduplicated Child Abuse and Neglect (CAN) Types count each type of abuse and neglect once per child, regardless of how many times each type has been reported for the child. Each child may have one or more types of abuse in the report year. So the su

**CHILD ABUSE AND NEGLECT IN HAWAII, 2000- 2004**  
**MILITARY**  
**Duplicated Count of Children by Source of Initial Reporter**

SOURCE	REPORTED					CONFIRMED				
	2000	2001	2002	2003	2004	2000	2001	2002	2003	2004
<b>MANDATED REPORTERS</b>										
Social services personnel	32	38	30	47	46	19	21	15	28	25
Medical personnel	21	40	47	45	24	9	28	20	16	12
Mental health personnel	0	3	18	6	2	0	0	12	3	1
Legal, law enforcement, or criminal justice personnel	37	50	70	92	71	25	33	48	71	53
Education personnel	32	37	27	54	21	17	16	15	25	7
Child day care provider	1	0	4	2	3	0	0	1	0	0
Substitute/Foster care provider	0	0	0	8	1	0	0	0	0	1
<b>Total Mandatory Reporters</b>	<b>123</b>	<b>168</b>	<b>196</b>	<b>254</b>	<b>168</b>	<b>70</b>	<b>98</b>	<b>111</b>	<b>143</b>	<b>99</b>
<b>OTHER REPORTERS</b>										
Alleged victim	6	0	0	0	0	5	0	0	0	0
Parent	1	11	5	25	7	0	0	1	9	6
Other relative	2	2	3	8	1	2	0	0	3	1
Friends/neighbor	9	15	3	19	12	3	9	2	3	4
Perpetrator	0	0	0	0	0	0	0	0	0	0
Anonymous	11	9	22	8	9	4	1	7	5	8
Other	24	14	15	21	17	8	9	7	5	3
Unknown	14	5	16	20	0	4	3	10	9	0
<b>Total Other Reporters</b>	<b>67</b>	<b>56</b>	<b>64</b>	<b>101</b>	<b>46</b>	<b>26</b>	<b>22</b>	<b>27</b>	<b>34</b>	<b>22</b>
<b>STATE TOTAL</b>	<b>190</b>	<b>224</b>	<b>260</b>	<b>355</b>	<b>214</b>	<b>96</b>	<b>120</b>	<b>138</b>	<b>177</b>	<b>121</b>

**CHILD ABUSE AND NEGLECT IN HAWAII, 2000-2004**  
**MILITARY**

**CONFIRMED DUPLICATED COUNT OF CHILDREN: AGE AND SEX**

<b>AGE</b>	<b>2000</b>	<b>2001</b>	<b>2002</b>	<b>2003</b>	<b>2004</b>
Less Than One Year	7	12	20	16	17
1 Year	11	19	13	23	10
2 Years	12	12	14	21	12
3 Years	14	13	7	16	8
4 Years	9	9	13	15	9
5 Years	6	6	9	9	9
6 Years	2	4	6	13	11
7 Years	7	8	9	6	7
8 Years	5	8	7	8	7
9 Years	3	4	7	8	7
10 Years	1	3	5	8	5
11 Years	4	3	5	5	3
12 Years	2	3	6	8	4
13 Years	1	5	4	3	2
14 Years	7	3	4	7	4
15 Years	2	3	4	4	2
16 Years	1	4	2	4	3
17 Years	1	1	3	2	1
Unspecified	1	0	0	1	0
	<b>96</b>	<b>120</b>	<b>138</b>	<b>177</b>	<b>121</b>
<b>SEX</b>	<b>2000</b>	<b>2001</b>	<b>2002</b>	<b>2003</b>	<b>2004</b>
Male	44	61	67	101	57
Female	52	59	67	75	64
Unspecified	0	0	4	1	0
<b>STATE TOTAL</b>	<b>96</b>	<b>120</b>	<b>138</b>	<b>177</b>	<b>121</b>

**CHILD ABUSE AND NEGLECT IN HAWAII, 2000-2004**  
**MILITARY**

**CONFIRMED DUPLICATED COUNT OF CHILDREN: RACE AND SEVERITY**

<b>RACE</b>	<b>2000</b>	<b>2001</b>	<b>2002</b>	<b>2003</b>	<b>2004</b>
White	35	38	47	71	43
Black	25	15	22	35	34
Mixed	9	27	20	34	16
Filipino	4	2	3	5	5
Hawaiian/Part Hawaiian	7	12	7	9	3
Japanese	0	0	0	0	1
Mexican	0	0	0	0	0
Korean	0	0	0	0	0
Cambodian	0	0	0	0	0
Chinese	0	1	0	1	1
Puerto Rican	0	0	0	0	0
Other pacific islander	0	0	1	0	0
Samoan	0	1	6	0	0
Vietnamese	0	0	0	0	0
American Indian	2	4	0	1	8
Hispanic/Spanish	6	7	7	3	5
Other	6	0	0	0	0
Unable to determine	0		0	2	1
Unknown	2	13	25	16	4
<b>STATE TOTAL</b>	<b>96</b>	<b>120</b>	<b>138</b>	<b>177</b>	<b>121</b>

<b>SEVERITY</b>	<b>2000</b>	<b>2001</b>	<b>2002</b>	<b>2003</b>	<b>2004</b>
Fatal	0	0	0	1	0
Permanent Disability	0	0	0	0	0
Serious	8	10	7	2	4
Treatment	10	16	12	5	7
No Treatment	62	70	89	113	64
No Injury	15	24	30	56	46
Unspecified	1	0	0	0	0
<b>STATE TOTAL</b>	<b>96</b>	<b>120</b>	<b>138</b>	<b>177</b>	<b>121</b>