

A Statistical Report on

**CHILD ABUSE AND NEGLECT
IN HAWAII**

2006

Prepared by

**State of Hawaii
Department of Human Services
Management Services Office**

TABLE OF CONTENTS

LIST OF TABLES

Summary	1
Duplicated Count of Children by County: Reported and Confirmed, 2002 - 2006	4
Abuse and Neglect Types By County, Duplicated Count of Types for Each Child	5
Abuse and Neglect Types By County, Unduplicated Count of Types for Each Child	6
Unduplicated Count of Children by County District	7
Duplicated Count of Children by County Districts, 2002 - 2006	8
Duplicated Count of Children by Source of Initial Reporter, 2002 - 2006	9
Age of Confirmed Duplicated Count of Children, 2002 - 2006	11
Sex of Confirmed Duplicated Count of Children, 2002 - 2006	11
Race of Confirmed Duplicated Count of Children, 2002 - 2006	12
Severity of Harm of Confirmed Duplicated Count of Children, 2002 - 2006	12
Age, Sex, and Race of Confirmed Unduplicated Children	13
Recurrence Rate	14
Perpetrators of Confirmed Victims: Age and Sex	17
Perpetrator Relationship to Victim, 2002 - 2006	18
Age of Perpetrator, 2002 - 2006	18
Sex of Perpetrator, 2002 - 2006	18

LIST OF FIGURES

Duplicated Count of Children, 2002 - 2006	2
Percentage of Duplicated Count of Children by County	3
Duplicated Count of Children by County: Reported and Confirmed, 2002 - 2006	4
Duplicated Count of Children by Source of Initial Reporter	10
Age and Sex of Perpetrators of Confirmed Duplicated Count of Children	15
Perpetrator Relationship to Victim	16

MILITARY

Duplicated Count of Children by Military Branch and Rank, 2002 - 2006	19
Abuse and Neglect Types, Duplicated and Unduplicated Count of Types	20
Duplicated Count of Children by Source of Initial Reporter, 2002 - 2006	21
Age of Confirmed Duplicated Count of Children, 2002 - 2006	22
Sex of Confirmed Duplicated Count of Children, 2002 - 2006	22
Race of Confirmed Duplicated Count of Children, 2002 - 2006	23
Severity of Harm of Confirmed Duplicated Count of Children, 2002 - 2006	23

CHILD ABUSE AND NEGLECT IN HAWAII, 2006 SUMMARY

	HAWAII	OAHU	KAUAI	MAUI	TOTAL
INTAKES					
Confirmed	233	685	57	112	1,087
Not Confirmed	273	610	78	124	1,085
Total Reported	506	1,295	135	236	2,172
Percent Confirmed	46%	53%	42%	47%	50%
 DUPLICATED COUNT OF CHILDREN					
Confirmed	422	1,242	87	177	1,928
Not Confirmed	492	1,187	139	228	2,046
Total Reported	914	2,429	226	405	3,974
Percent Confirmed	46%	51%	38%	44%	49%
 UNDUPLICATED COUNT OF CHILDREN					
Confirmed	412	1,218	83	169	1,882
Not Confirmed	434	1,123	131	210	1,898
Total Reported	846	2,341	214	379	3,780
Percent Confirmed	49%	52%	39%	45%	50%

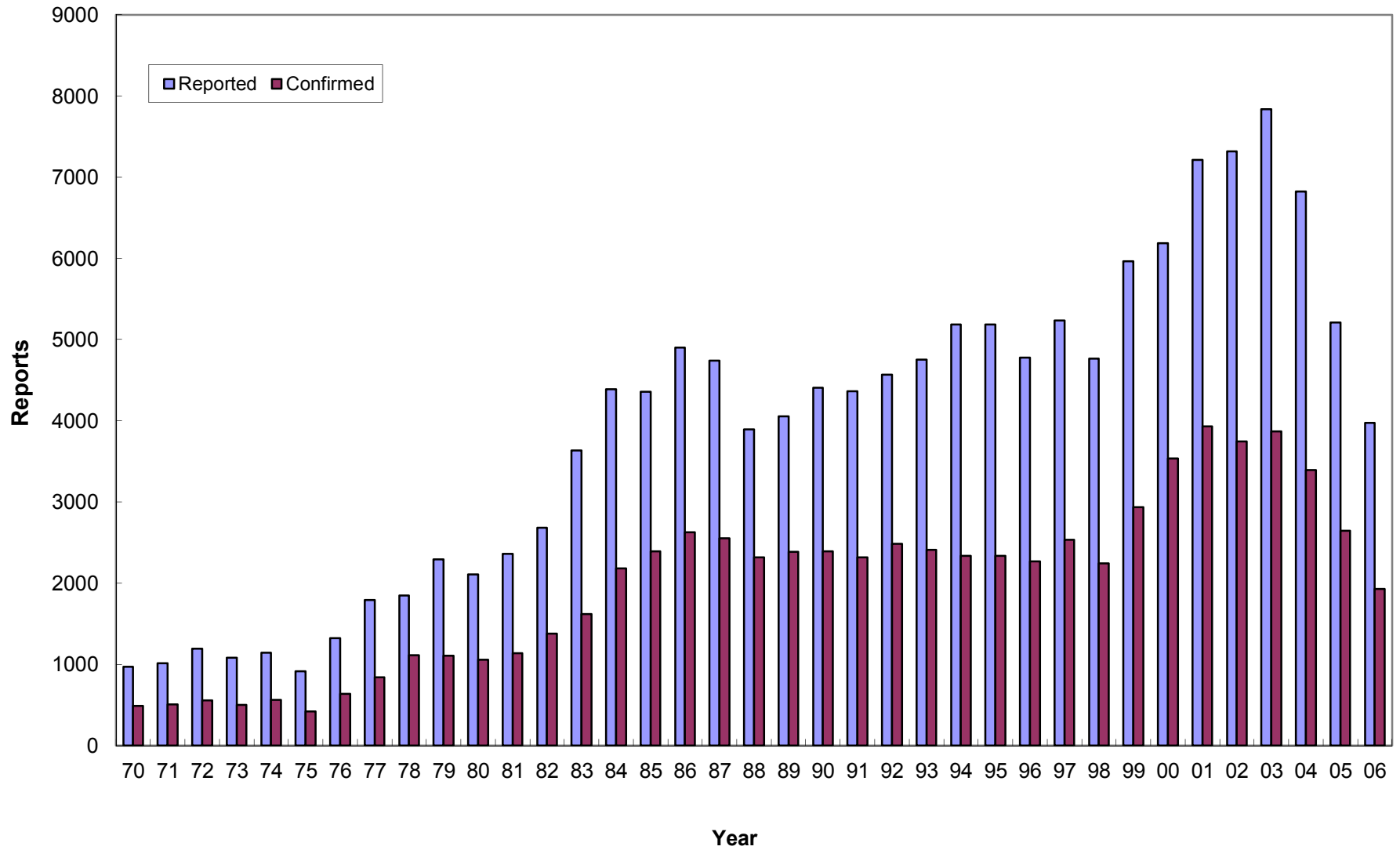
Intakes: reports accepted for investigation.

Duplicated count: counted by reports, a child is counted each time that he/she was found to be a victim.

Unduplicated count: counted by child, a child is counted only once during the reporting period, regardless of how many times the child was reported.

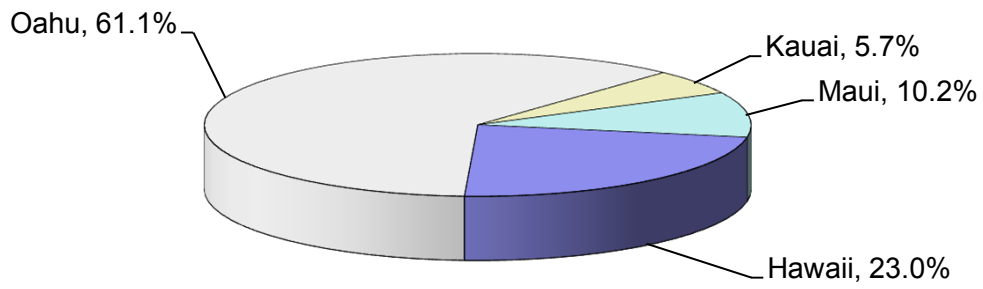
Note: In this report, data from 1999 and before were based on report date, data from 2000 and after were based on disposition date.

CHILD ABUSE AND NEGLECT IN HAWAII, 1970-2006 Duplicated Count of Children

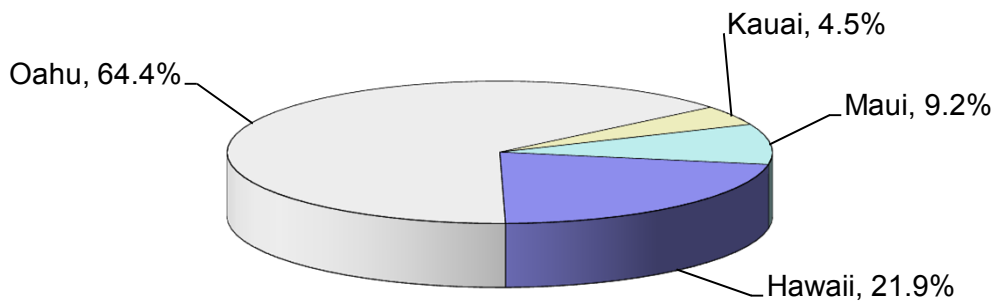


CHILD ABUSE AND NEGLECT IN HAWAII, 2006

Total Count of Children



Total Count of Children

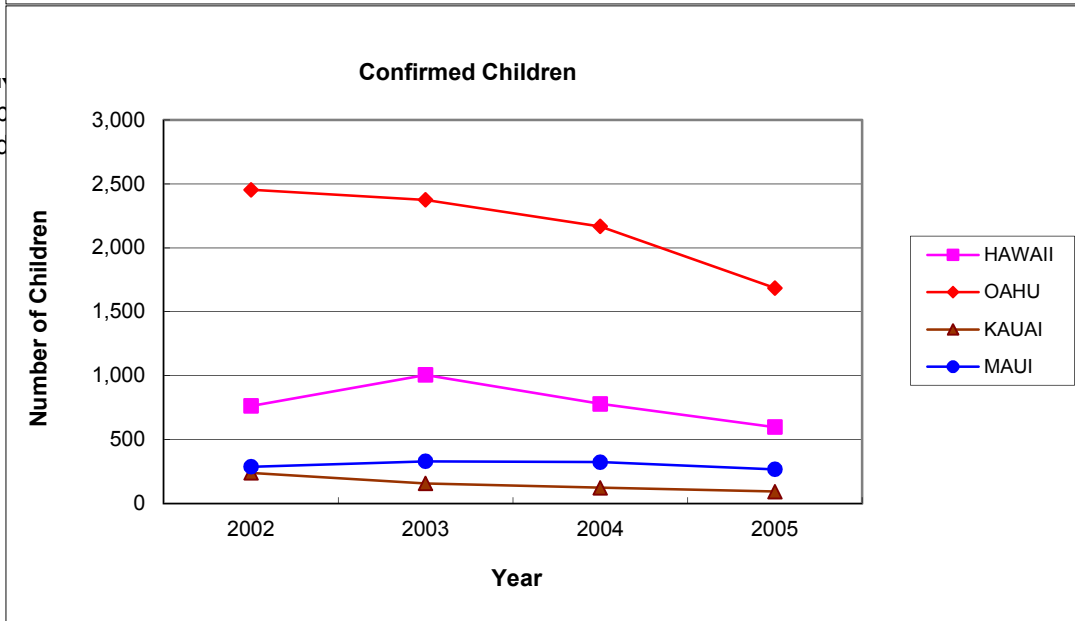
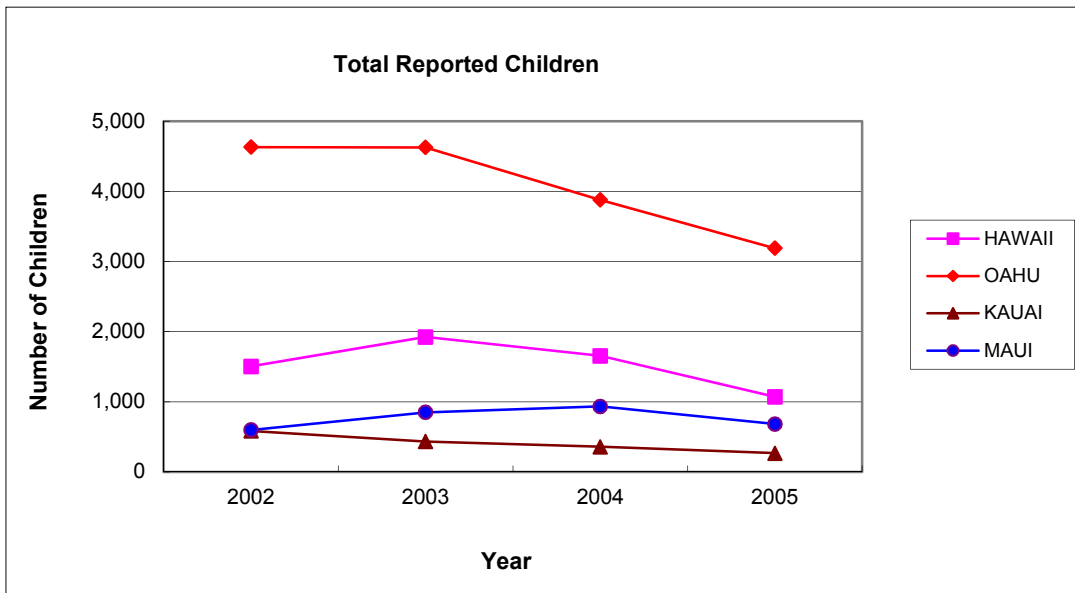


Count of Confirmed Children

CHILD ABUSE AND NEGLECT IN HAWAII, 2002-2006

Duplicated Count of Children by County

DISTRICT	REPORTED					CONFIRMED				
	2002	2003	2004	2005	2006	2002	2003	2004	2005	2006
HAWAII	1,504	1,924	1,653	1,069	914	763	1,006	780	598	422
OAHU	4,632	4,628	3,880	3,189	2,429	2,454	2,375	2,168	1,686	1,242
KAUAI	584	434	357	267	226	240	157	124	93	87
MAUI	598	849	933	682	405	287	330	324	268	177
STATE	7,318	7,835	6,823	5,207	3,974	3,744	3,868	3,396	2,645	1,928



CHILD ABUSE AND NEGLECT IN HAWAII, 2006

ABUSE AND NEGLECT TYPES BY COUNTY

DUPLICATED COUNT OF TYPES FOR EACH CHILD*

Total Reported:	HAWAII	OAHU	KAUAI	MAUI	Total
Physical Abuse	175	477	30	77	759
Neglect	187	577	52	95	911
Medical Neglect	23	49	8	7	87
Sexual Abuse	69	157	13	27	266
Psychological Abuse	29	48	4	8	89
Threatened Harm	852	2,237	208	353	3,650
Total	1,335	3,545	315	567	5,762

Confirmed:

Physical Abuse	41	153	10	18	222
Neglect	52	203	17	23	295
Medical Neglect	4	22	3	2	31
Sexual Abuse	25	61	2	4	92
Psychological Abuse	9	18	2	4	33
Threatened Harm	398	1,130	81	156	1,765
Total	529	1,587	115	207	2,438

Confirmation Rate by Type

Physical Abuse	23%	32%	33%	23%	29%
Neglect	28%	35%	33%	24%	32%
Medical Neglect	17%	45%	38%	29%	36%
Sexual Abuse	36%	39%	15%	15%	35%
Psychological Abuse	31%	38%	50%	50%	37%
Threatened Harm	47%	51%	39%	44%	48%
Total	40%	45%	37%	37%	42%

* A child may have more than one type of abuse/neglect per report and may have been reported more than once within the reporting period. Therefore, the sum of the abuse/neglect types exceeds the count of children.

CHILD ABUSE AND NEGLECT IN HAWAII, 2006

ABUSE AND NEGLECT TYPES BY COUNTY

UNDUPLICATED COUNT OF TYPES FOR EACH CHILD*

Total Reported:

	HAWAII	OAHU	KAUAI	MAUI	Total
Physical Abuse	171	475	29	75	750
Neglect	182	560	50	90	882
Medical Neglect	23	49	8	7	87
Sexual Abuse	68	155	13	27	263
Psychological Abuse	29	48	4	8	89
Threatened Harm	794	2,165	201	335	3,495
Total	1,267	3,452	305	542	5,566

Confirmed:

Physical Abuse	40	153	10	18	221
Neglect	52	194	15	22	283
Medical Neglect	4	22	3	2	31
Sexual Abuse	25	61	2	4	92
Psychological Abuse	9	18	2	4	33
Threatened Harm	388	1,117	79	150	1,734
Total	518	1,565	111	200	2,394

Confirmation Rate by Type

Physical Abuse	23%	32%	34%	24%	29%
Neglect	29%	35%	30%	24%	32%
Medical Neglect	17%	45%	38%	29%	36%
Sexual Abuse	37%	39%	15%	15%	35%
Psychological Abuse	31%	38%	50%	50%	37%
Threatened Harm	49%	52%	39%	45%	50%
Total	41%	45%	36%	37%	43%

* A child may have more than one type of abuse/neglect per report and may have been reported more than once within the reporting period, but the same maltreatment was counted only once. Therefore, the sum of the abuse/neglect types exceeds the count of children.

CHILD ABUSE AND NEGLECT IN HAWAII, 2006

NUMBER OF UNDUPLICATED CHILDREN BY DISTRICT

	CONFIRMED	NOT CONFIRMED	TOTAL
HAWAII			
N. Hilo	0	4	4
S. Hilo	84	62	146
Puna	78	88	166
Kau	21	3	24
S. Kona	8	16	24
N. Kona	22	21	43
S. Kohala	15	23	38
N. Kohala	4	12	16
Hamakua	3	11	14
Unspecified	177	194	371
Total	412	434	846
OAHU			
Honolulu	290	324	614
Ewa	335	319	654
Wahiawa	103	79	182
Waianae	272	171	443
Waialua	22	15	37
Koolauloa	21	21	42
Koolaupoko	108	131	239
Unspecified	67	63	130
Total	1,218	1,123	2,341
KAUAI			
Lihue	15	28	43
Koloa	6	24	30
Waimea	2	25	27
Hanalei	6	11	17
Kawaihau	34	28	62
Unspecified	20	15	35
Total	83	131	214
MAUI			
Lahaina	11	14	25
Wailuku	73	85	158
Makawao	35	30	65
Hana	0	0	0
Molokai	3	5	8
Lanai	1	0	1
Unspecified	46	76	122
Total	169	210	379
STATE TOTAL	1,882	1,898	3,780

CHILD ABUSE AND NEGLECT IN HAWAII, 2002-2006

Duplicated Count of Children by County District

DISTRICT	REPORTED					CONFIRMED				
	2002	2003	2004	2005	2006	2002	2003	2004	2005	2006
HAWAII COUNTY	1,504	1,924	1,653	1,069	914	763	1,006	780	598	422
N. Hilo	6	8	20	9	4	2	4	7	0	0
S. Hilo	417	564	473	197	157	185	252	160	121	86
Puna	460	594	525	247	181	153	242	216	129	79
Kau	65	40	51	36	26	44	21	30	20	21
S. Kona	101	112	42	28	25	74	79	23	17	8
N. Kona	192	154	134	90	45	152	111	89	53	23
S. Kohala	101	95	78	59	42	72	61	54	36	15
N. Kohala	50	43	34	14	16	33	29	23	8	4
Hamakua	54	52	55	9	14	13	9	12	4	3
Unspecified	58	262	241	380	404	35	198	166	210	183
OAHU	4,632	4,628	3,880	3,189	2,429	2,454	2,375	2,168	1,686	1,242
Honolulu	1346	1084	959	815	634	719	549	530	415	302
Ewa	1091	975	719	759	665	565	510	391	410	336
Wahiawa	293	276	151	270	193	156	128	83	140	103
Waianae	710	660	801	705	466	409	399	472	440	283
Waialua	72	56	39	40	43	48	22	21	18	22
Koolauloa	96	72	34	55	44	44	37	20	31	21
Koolaupoko	484	498	384	363	246	247	213	211	153	108
Unspecified	540	1007	793	182	138	266	517	440	79	67
KAUAI COUNTY	584	434	357	267	226	240	157	124	93	87
Lihue	158	95	68	54	47	61	38	20	18	17
Koloa	83	79	58	50	30	28	21	14	17	6
Waimea	97	55	53	32	30	38	6	17	11	2
Hanalei	56	48	33	9	19	24	23	11	2	8
Kawaihau	178	150	128	68	62	78	66	53	26	34
Unspecified	12	7	17	54	38	11	3	9	19	20
MAUI COUNTY	598	849	933	682	405	287	330	324	268	177
Lahaina	48	55	109	68	26	16	22	35	26	11
Wailuku	292	423	447	338	174	150	151	174	140	79
Makawao	164	204	194	134	70	64	65	60	51	36
Hana	2	14	20	2		1	8	2	0	0
Molokai	51	89	40	21	11	40	56	14	9	4
Lanai	4	17	14	5	1	4	17	6	2	1
Unspecified	37	47	109	114	123	12	11	33	40	46
STATE TOTAL	7,318	7,835	6,823	5,207	3,974	3,744	3,868	3,396	2,645	1,928

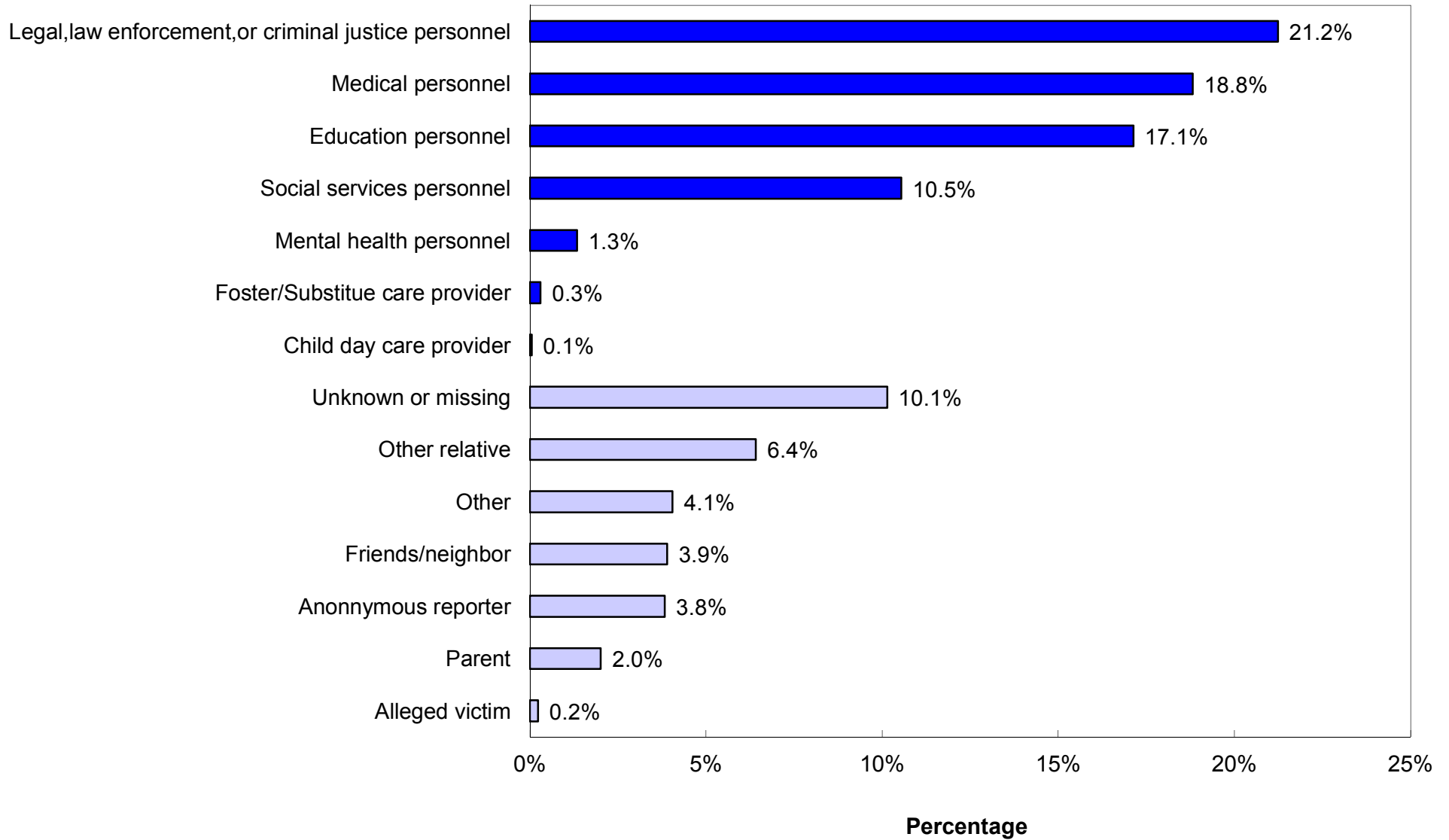
CHILD ABUSE AND NEGLECT IN HAWAII, 2002- 2006

Duplicated Count of Children by Source of Initial Reporter

SOURCE	REPORTED					CONFIRMED				
	2002	2003	2004	2005	2006	2002	2003	2004	2005	2005
MANDATED REPORTERS										
Social services personnel	866	960	907	744	419	438	457	423	364	182
Medical personnel	1155	1152	1045	945	748	759	717	662	606	443
Mental health personnel	234	229	152	106	53	98	103	74	41	28
Legal, law enforcement, or criminal justice personnel	1175	1256	1310	1,082	844	674	729	784	606	492
Education personnel	1032	1138	1090	872	681	492	555	500	377	294
Child day care provider	11	32	13	4	2	5	27	6	0	0
Foster/Substitute care provider	47	58	60	17	12	22	30	37	9	5
Total Mandatory Reporters	4,520	4,825	4,577	3,770	2,759	2,488	2,618	2,486	2,003	1,444
OTHER REPORTERS										
Alleged victim	38	25	12	12	9	16	6	5	4	9
Parent	357	339	267	190	80	155	153	112	82	41
Other relative	489	576	541	369	255	254	320	251	204	120
Friends/neighbor	249	298	402	233	155	76	84	153	81	58
Perpetrator	1	2	0	0		0	0	0	0	0
Anonymous	637	698	566	246	152	236	230	205	89	49
Other	411	477	315	243	161	179	150	112	104	65
Unknown	616	595	143	144	403	340	307	72	78	142
Total Other Reporters	2,798	3,010	2,246	1,437	1,215	1,256	1,250	910	642	484
STATE TOTAL	7,318	7,835	6,823	5,207	3,974	3,744	3,868	3,396	2,645	1,928

CHILD ABUSE AND NEGLECT IN HAWAII, 2006
Mandated and Non-Mandated Source of Initial Reporter

Sources ■ Mandated Sources □ Non-Mandated Sources



**CHILD ABUSE AND NEGLECT IN HAWAII, 2002-2006
VICTIM**

CONFIRMED DUPLICATED COUNT OF CHILDREN

AGE	2002	2003	2004	2005	2006
Less Than One Year	548	535	534	464	353
1 Year	218	231	225	174	117
2 Years	199	235	226	156	112
3 Years	215	230	200	145	87
4 Years	211	225	158	156	94
5 Years	221	194	174	141	121
6 Years	204	215	183	123	84
7 Years	208	208	161	116	78
8 Years	210	183	177	130	86
9 Years	189	220	158	127	78
10 Years	193	198	156	122	86
11 Years	202	202	157	111	79
12 Years	183	216	165	107	103
13 Years	185	182	192	147	92
14 Years	155	190	175	159	92
15 Years	154	149	145	107	108
16 Years	135	140	129	80	80
17 Years	99	93	63	67	65
Unknown	15	22	18	13	13
Median age	7	7	6	6	6
TOTAL	3,744	3,868	3,396	2,645	1,928
SEX	2002	2003	2004	2005	2006
Male	1,829	1,927	1,646	1,274	945
Female	1,901	1,920	1,739	1,366	976
Unknown	14	21	11	5	7
TOTAL	3,744	3,868	3,396	2,645	1,928

**CHILD ABUSE AND NEGLECT IN HAWAII, 2002-2006
VICTIM**

CONFIRMED DUPLICATED COUNT OF CHILDREN

RACE	2002	2003	2004	2005	2006
Hawaiian/Part Hawaiian	1,621	1,588	1,302	1,092	728
Mixed	508	486	455	358	283
White	398	395	352	247	220
Filipino	243	223	230	200	125
Samoaan	121	103	127	90	72
Black	61	83	78	52	40
Japanese	52	49	46	31	34
Korean	9	7	16	6	5
American Indian	20	27	25	20	10
Chinese	5	16	14	10	10
Other Pacific Islander	84	79	66	55	56
Hispanic/Spanish	59	62	95	65	56
Vietnamese	20	6	9	7	7
Laotian	2	3	5	3	3
Cambodian	2	0	2	0	1
Alaskan Native	0	0	5	1	0
Unable to Determine	93	115	108	64	59
Missing	446	626	461	344	219
TOTAL	3,744	3,868	3,396	2,645	1,928

SEVERITY OF HARM	2002	2003	2004	2005	2006
Fatal	7	7*	6	2	5
No treatment necessary	2,388	2,153	1,919	1,481	1,020
Treatment required	522	568	412	282	217
Serious	118	51	79	96	90
Permanent disability	6	0	1	2	0
No injury	703	1,089	979	782	596
Unspecified	0	0	0	0	0
TOTAL	3,744	3,861	3,396	2,645	1,928

*There were six victims, one of them was reported twice.

CHILD ABUSE AND NEGLECT IN HAWAII, 2006 VICTIM

CONFIRMED UNDUPLICATED COUNT OF CHILDREN*: AGE, SEX, RACE, SEVERITY

AGE	Number	Percent	RACE	Number	Percent
Less Than One Year	349	18.5			
1 Year	115	6.1	Hawaiian/Part Hawaiian	714	37.9
2 Years	110	5.8	Mixed	278	14.8
3 Years	86	4.6	MISSING	215	11.4
4 Years	91	4.8	White	205	10.9
5 Years	117	6.2	Filipino	122	6.5
6 Years	82	4.4	Samoan	72	3.8
7 Years	77	4.1	Unable to determine	58	3.1
8 Years	82	4.4	Other pacific islander	56	3.0
9 Years	75	4.0	Hispanic/Spanish	52	2.8
10 Years	84	4.5	Black	40	2.1
11 Years	76	4.0	Japanese	34	1.8
12 Years	100	5.3	American Indian	10	0.5
13 Years	90	4.8	Chinese	10	0.5
14 Years	87	4.6	Vietnamese	7	0.4
15 Years	105	5.6	Korean	5	0.3
16 Years	78	4.1	Laotian	3	0.2
17 Years	65	3.5	Cambodian	1	0.1
Unknown	13	0.7			
TOTAL	1,882	100.0	TOTAL	1,882	100.0

SEX	Number	Percent	SEVERITY OF HARM	Number	Percent
Male	919	48.8	No treatment necessary	989	52.6
Female	956	50.8	Treatment required	213	11.3
Unknown	7	0.4	Serious	89	4.7
			Fatal	5	0.3
			No injury	586	31.1
TOTAL	1,882	100.0	TOTAL	1,882	100.0

*A child is only counted once, regardless of how many times he/she was reported.
The highest severity level was selected for a child with more than one confirmed severity.

CHILD ABUSE AND NEGLECT IN HAWAII, 2006
Recurrence*

	Frequency	Percent
No Recurrence**	959	99.17
Recurrence***	8	0.83
Total	967	100.0

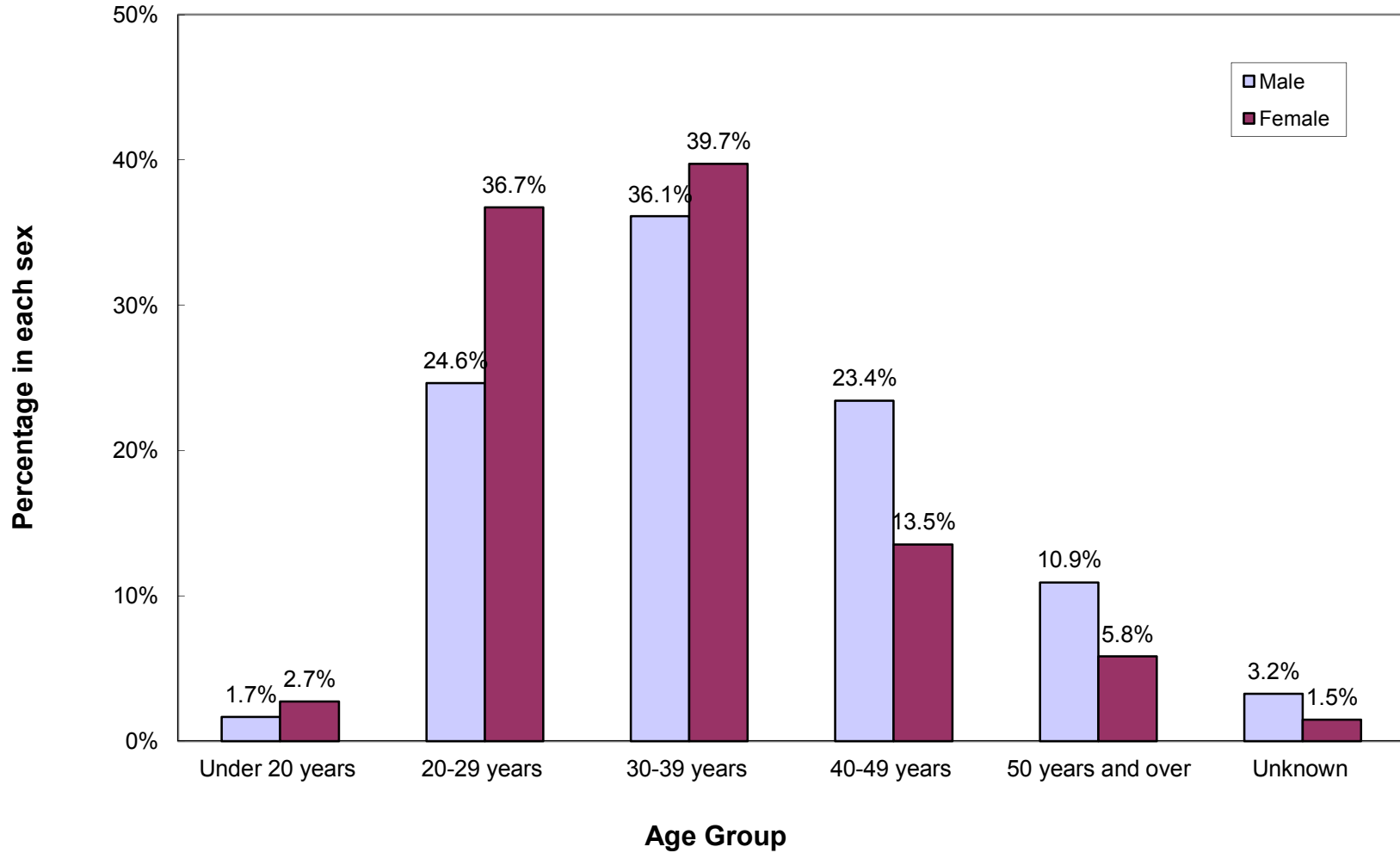
*Only confirmed child victims, whose report year and disposition year were both in 2006 and the initial maltreatment report date fell between January-June, 2006, were included in the recurrence rate calculation.

**Maltreatment occurred between January and June. There was no recurrence within six months.

***First maltreatment occurred between January and June. The second maltreatment occurred within six months.

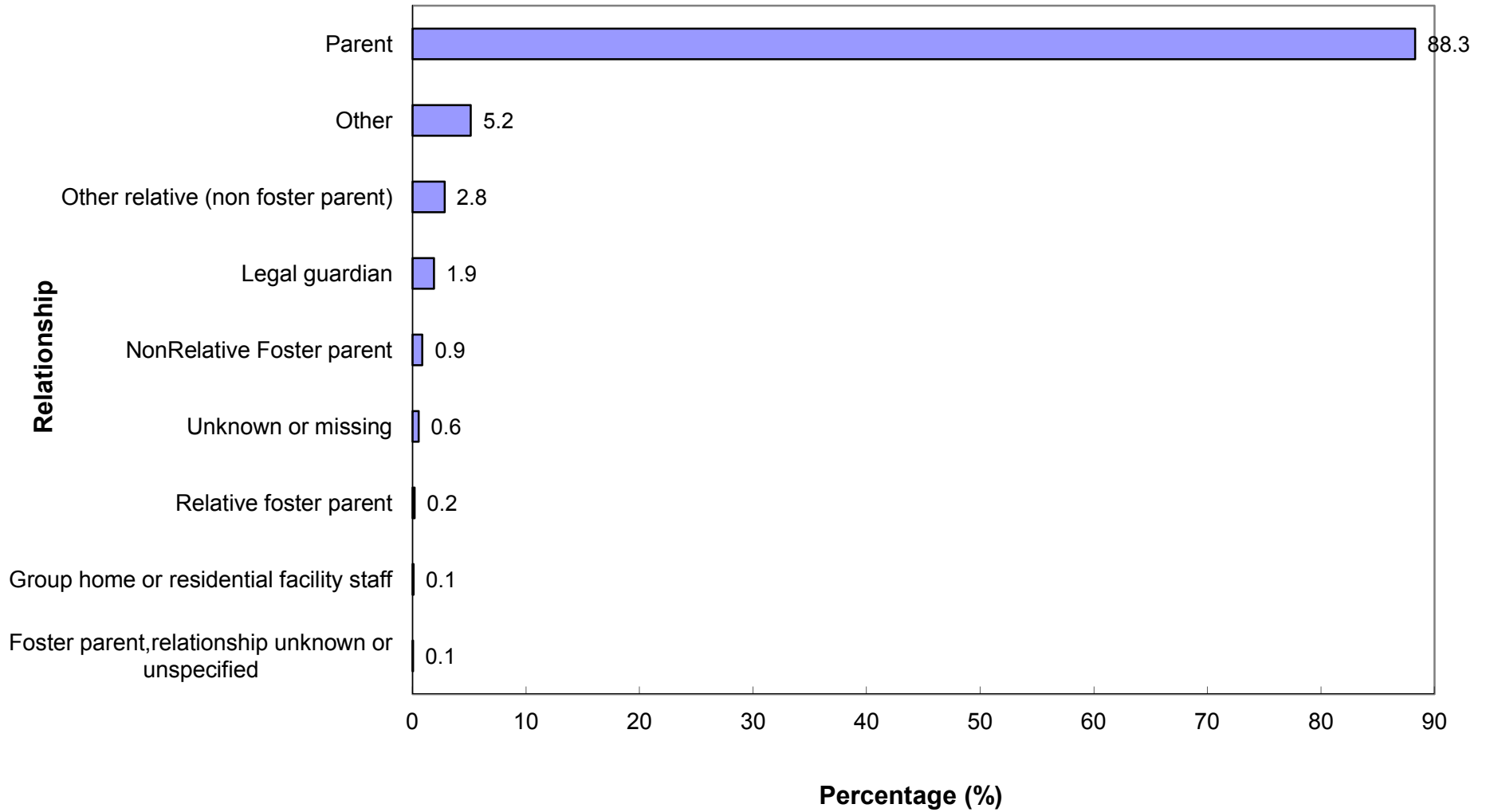
CHILD ABUSE AND NEGLECT IN HAWAII, 2006

Duplicated Count of Perpetrators: Age Group by Sex



CHILD ABUSE AND NEGLECT IN HAWAII, 2006

Relationship of Perpetrator to Confirmed Victim



CHILD ABUSE AND NEGLECT IN HAWAII, 2006

UNDUPLICATED PERPETRATORS FOR CONFIRMED VICTIMS*

AGE	Number	Percent
Under 20 years	55	3.5
20-29 years	497	31.5
30-39 years	551	34.9
40-49 years	292	18.5
50 years and over	140	8.9
Unknown	42	2.7
TOTAL	1,577	100.0

SEX	Number	Percent
Male	656	41.6
Female	910	57.7
Unknown or missing	11	0.7
TOTAL	1,577	100.0

* A perpetrator was counted only once regardless of how many times he/she was associated with a child victim.

CHILD ABUSE AND NEGLECT IN HAWAII, 2002-2006
PERPETRATORS OF CONFIRMED VICTIMS
Duplicated Count of Perpetrators*

RELATIONSHIP TO VICTIM	2002	2003	2004	2005	2006
Parent	4,617	5,040	4,244	3,417	2,588
Other relative	281	249	233	176	83
Foster parent	63	115	62		
Relative foster parent				58	6
NonRelative Foster parent				21	26
Group home/Residential facility staff	8	6	1	2	3
Legal guardian	51	39	53	102	56
Foster parent, relationship unspecified					2
Other	354	352	312	210	151
Unknown/missing	46	52	48	37	16
TOTAL	5,420	5,853	4,953	4,023	2,931

PERPETRATOR AGE	2002	2003	2004	2005	2006
Under 20 Years	223	188	199	131	66
20 - 29 Years	1,548	1,737	1,500	1,336	921
30 - 39 Years	2,269	2,467	1,988	1,478	1,111
40 - 49 Years	879	1,008	814	732	521
50 Years or Older	292	296	331	262	236
Unknown	209	157	121	84	76
TOTAL	5,420	5,853	4,953	4,023	2,931

PERPETRATOR SEX	2002	2003	2004	2005	2006
Male	2,335	2,578	2199	1,698	1,263
Female	3,045	3,266	2738	2,316	1,647
Unknown	40	9	16	9	21
TOTAL	5,420	5,853	4,953	4,023	2,931

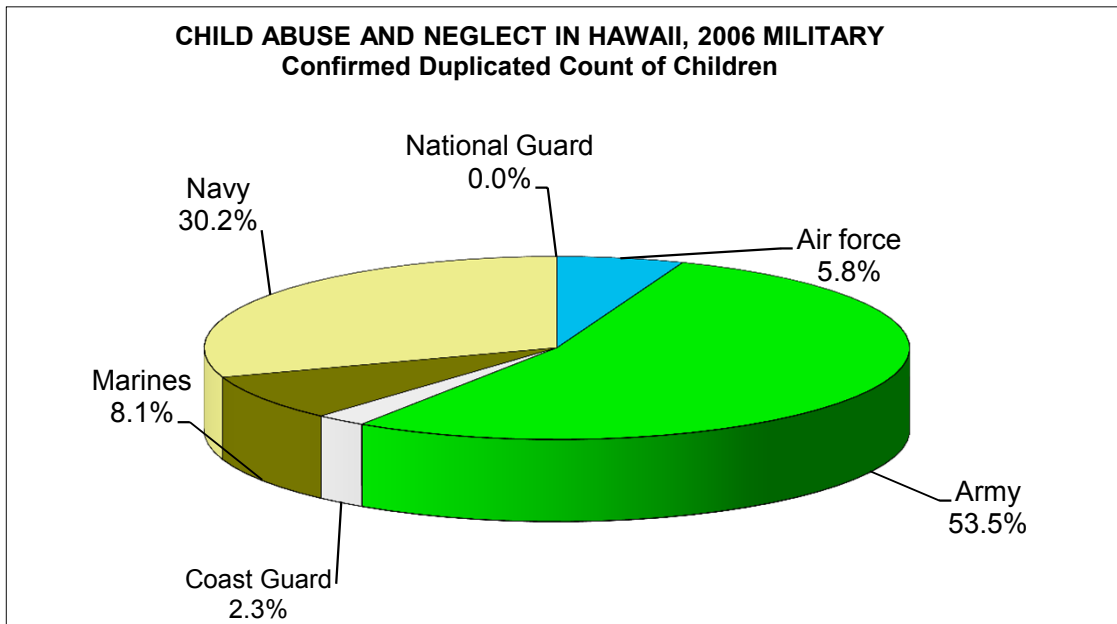
*A perpetrator was counted each time that he/she was associated with a child victim, therefore one perpetrator may have been counted more than once. For example, if an intake had 2 confirmed victims and 2 perpetrators, then the count of perpetrators would be 4.

CHILD ABUSE AND NEGLECT IN HAWAII, 2002-2006 MILITARY

DUPLICATED COUNT OF CHILDREN

Military Branch	REPORTED					CONFIRMED				
	2002	2003	2004	2005	2006	2002	2003	2004	2005	2006
Air force	9	14	10	7	15	6	6	5	5	5
Army	130	195	117	106	93	70	104	77	58	46
Coast Guard	1	0	3	6	5	0	0	1	2	2
Marines	21	19	21	24	22	10	11	10	6	7
Navy	95	127	62	61	52	50	56	27	26	26
National Guard	4	0	1	0		2	0	1	0	0
State Total	260	355	214	204	187	138	177	121	97	86

Military Rank	2002	2003	2004	2005	2006	2002	2003	2004	2005	2006
Unspecified	126	158	72	97	73	58	66	44	49	32
Enlisted	121	179	129	95	100	74	100	70	42	53
Non-Commissioned	11	11	11	11	7	6	8	7	5	1
Officer	2	7	2	1	7	0	3	0	1	0
State Total	260	355	214	204	187	138	177	121	97	86



**CHILD ABUSE AND NEGLECT IN HAWAII, 2006
MILITARY**

ABUSE AND NEGLECT TYPES PER CHILD

Total Reported	DUPLICATED COUNT OF TYPES*					UNDUPLICATED COUNT OF TYPES**				
	HAWAII	OAHU	KAUAI	MAUI	TOTAL	HAWAII	OAHU	KAUAI	MAUI	TOTAL
Physical Abuse	0	51	0	0	51	0	51	0	0	51
Neglect	0	44	0	0	44	0	44	0	0	44
Medical Neglect	0	5	0	0	5	0	5	0	0	5
Sexual Abuse	0	10	0	0	10	0	10	0	0	10
Psychological Abuse	0	2	0	0	2	0	2	0	0	2
Threatened Harm	0	174	0	0	174	0	166	0	0	166
Total	0	286	0	0	286	0	278	0	0	278

Confirmed

Physical Abuse	0	16	0	0	16	0	16	0	0	16
Neglect	0	15	0	0	15	0	15	0	0	15
Medical Neglect	0	2	0	0	2	0	2	0	0	2
Sexual Abuse	0	4	0	0	4	0	4	0	0	4
Psychological Abuse	0	1	0	0	1	0	1	0	0	1
Threatened Harm	0	80	0	0	80	0	80	0	0	80
Total	0	118	0	0	118	0	118	0	0	118

Confirmation Rate by Type

Physical Abuse	0%	31%	0%	0%	31%	0%	31%	0%	0%	31%
Neglect	0%	34%	0%	0%	34%	0%	34%	0%	0%	34%
Medical Neglect	0%	40%	0%	0%	40%	0%	40%	0%	0%	40%
Sexual Abuse	0%	40%	0%	0%	40%	0%	40%	0%	0%	40%
Psychological Abuse	0%	0%	0%	0%	0%	0%	0%	0%	0%	0%
Threatened Harm	0%	46%	0%	0%	46%	0%	48%	0%	0%	48%
Total	0%	41%	0%	0%	41%	0%	42%	0%	0%	42%

* A child may have more than one type of abuse/neglect per report and may have been reported more than once within the reporting period. Therefore, the sum of the abuse/neglect types exceeds the count of children.

** A child may have more than one type of abuse/neglect per report and may have been reported more than once within the reporting period, but the same maltreatment was counted only once. Therefore, the sum of the abuse/neglect types exceeds the count of children.

CHILD ABUSE AND NEGLECT IN HAWAII, 2002- 2006
MILITARY
Duplicated Count of Children by Source of Initial Reporter

SOURCE	REPORTED					CONFIRMED				
	2002	2003	2004	2005	2006	2002	2003	2004	2005	2006
MANDATED REPORTERS										
Social services personnel	30	47	46	20	20	15	28	25	14	13
Medical personnel	47	45	24	47	46	20	16	12	22	19
Mental health personnel	18	6	2	4	1	12	3	1	4	0
Legal, law enforcement, or criminal justice personnel	70	92	71	58	55	48	71	53	33	30
Education personnel	27	54	21	14	15	15	25	7	2	8
Child day care provider	4	2	3	2	1	1	0	0	0	0
Substitute/Foster care provider	0	8	1	0	0	0	0	1	0	0
Total Mandatory Reporters	196	254	168	145	138	111	143	99	75	70
OTHER REPORTERS										
Alleged victim	0	0	0	0	0	0	0	0	0	0
Parent	5	25	7	10	2	1	9	6	5	1
Other relative	3	8	1	5	7	0	3	1	5	2
Friends/neighbor	3	19	12	20	13	2	3	4	4	2
Perpetrator	0	0	0	0	0	0	0	0	0	0
Anonymous	22	8	9	6	6	7	5	8	0	4
Other	15	21	17	10	2	7	5	3	2	1
Unknown	16	20	0	8	19	10	9	0	6	6
Total Other Reporters	64	101	46	59	49	27	34	22	22	16
STATE TOTAL	260	355	214	204	187	138	177	121	97	86

CHILD ABUSE AND NEGLECT IN HAWAII, 2002-2006
MILITARY

CONFIRMED DUPLICATED COUNT OF CHILDREN: AGE AND SEX

AGE	2002	2003	2004	2005	2006
Less Than One Year	20	16	17	22	19
1 Year	13	23	10	14	7
2 Years	14	21	12	12	9
3 Years	7	16	8	4	5
4 Years	13	15	9	4	6
5 Years	9	9	9	10	6
6 Years	6	13	11	4	6
7 Years	9	6	7	6	3
8 Years	7	8	7	2	4
9 Years	7	8	7	5	3
10 Years	5	8	5	3	3
11 Years	5	5	3	2	1
12 Years	6	8	4	4	2
13 Years	4	3	2	0	3
14 Years	4	7	4	1	1
15 Years	4	4	2	0	1
16 Years	2	4	3	0	1
17 Years	3	2	1	2	3
Unspecified	0	1	0	2	3
	138	177	121	97	86
SEX	2002	2003	2004	2005	2006
Male	67	101	57	50	42
Female	67	75	64	46	44
Unspecified	4	1	0	1	0
STATE TOTAL	138	177	121	97	86

CHILD ABUSE AND NEGLECT IN HAWAII, 2002-2006
MILITARY

CONFIRMED DUPLICATED COUNT OF CHILDREN: RACE AND SEVERITY

RACE	2002	2003	2004	2005	2006
White	47	71	43	29	30
Black	22	35	34	24	12
Mixed	20	34	16	16	6
Filipino	3	5	5	4	3
Hawaiian/Part Hawaiian	7	9	3	10	10
Japanese	0	0	1	0	
Mexican	0	0	0	0	
Korean	0	0	0	0	
Cambodian	0	0	0	0	
Chinese	0	1	1	0	
Puerto Rican	0	0	0	0	
Other pacific islander	1	0	0	0	1
Samoan	6	0	0	0	1
Vietnamese	0	0	0	0	
American Indian	0	1	8	0	1
Hispanic/Spanish	7	3	5	3	10
Other	0	0	0	0	
Unable to determine	0	2	1	0	4
Unknown	25	16	4	11	8
STATE TOTAL	138	177	121	97	86

SEVERITY	2002	2003	2004	2005	2006
Fatal	0	1	0	0	1
Permanent Disability	0	0	0	0	0
Serious	7	2	4	5	1
Treatment	12	5	7	9	4
No Treatment	89	113	64	60	47
No Injury	30	56	46	23	33
Unspecified	0	0	0	0	0
STATE TOTAL	138	177	121	97	86