

# FACTS EVERYONE SHOULD KNOW ABOUT INTIMATE PARTNER VIOLENCE, SEXUAL VIOLENCE & STALKING

BY UNDERSTANDING THESE TYPES OF VIOLENCE, WE CAN TAKE ACTION TO STOP THEM BEFORE THEY START IN OUR COMMUNITIES.

## Intimate partner violence (IPV), sexual violence, and stalking are widespread

...impacting millions of Americans each year

**20**

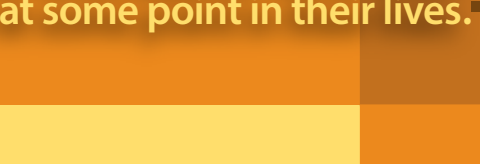
people per minute  
are victims of physical violence  
by an intimate partner in the  
United States.\*



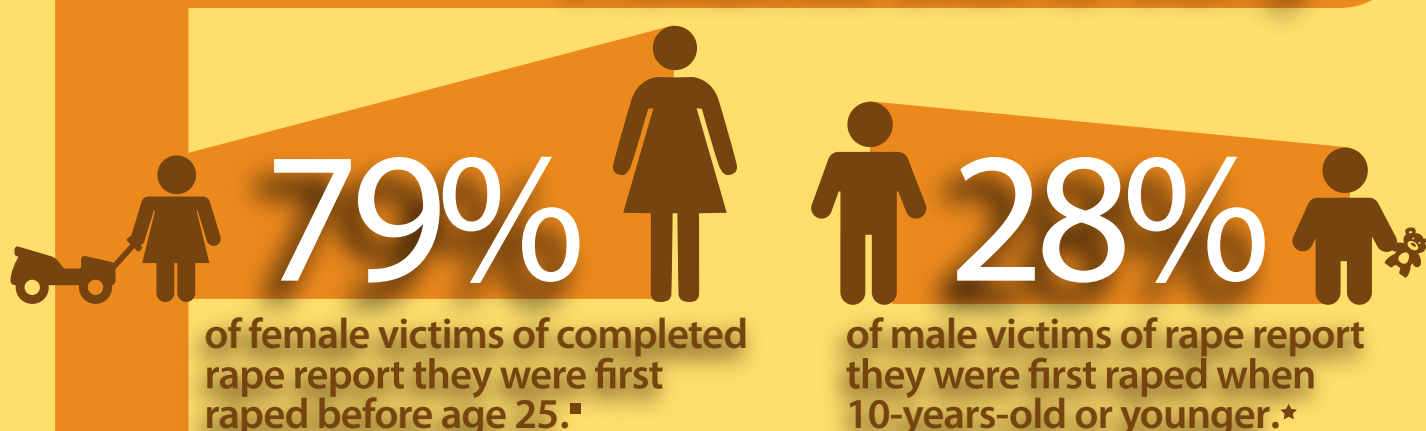
...and affecting both men and women.

Nearly **1 in 2** women and **1 in 5** men

experienced sexual violence victimization other than  
rape at some point in their lives.\*



## Violence starts early



More than **1/2**



female victims

and nearly

**1/2**



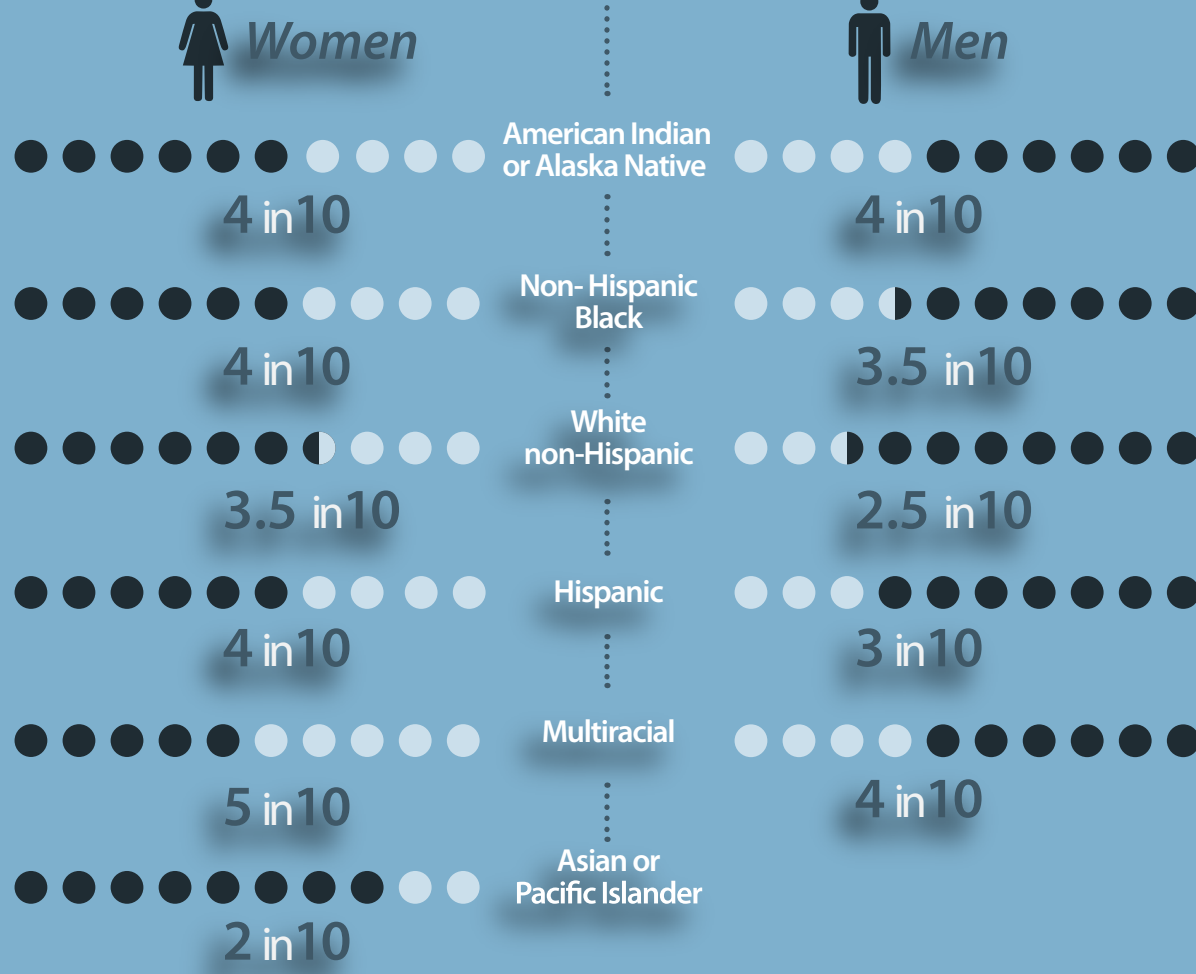
male victims

of stalking indicated they were first stalked  
**before age 25.\***

## They impact all types of people

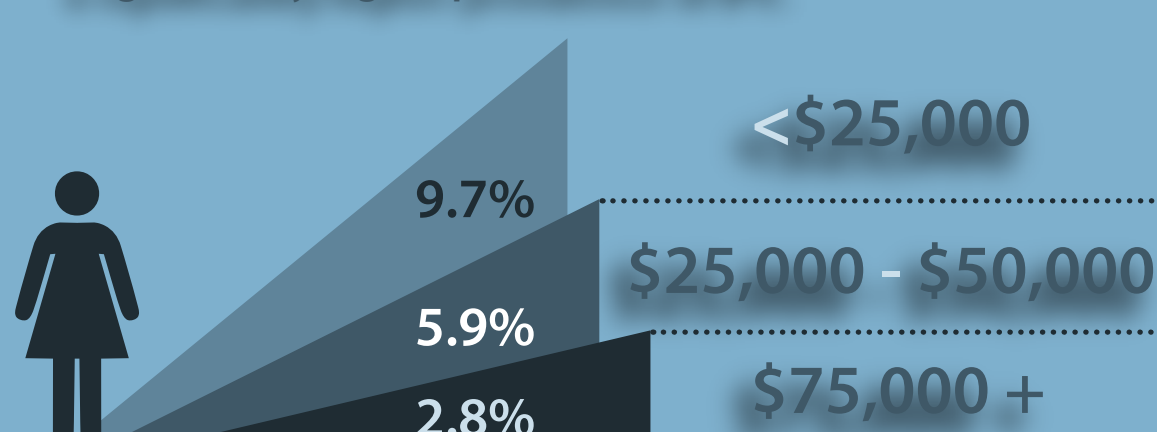
...of all races/ethnicities.

### Rape, Physical Violence, or Stalking Victimization in Lifetime\*

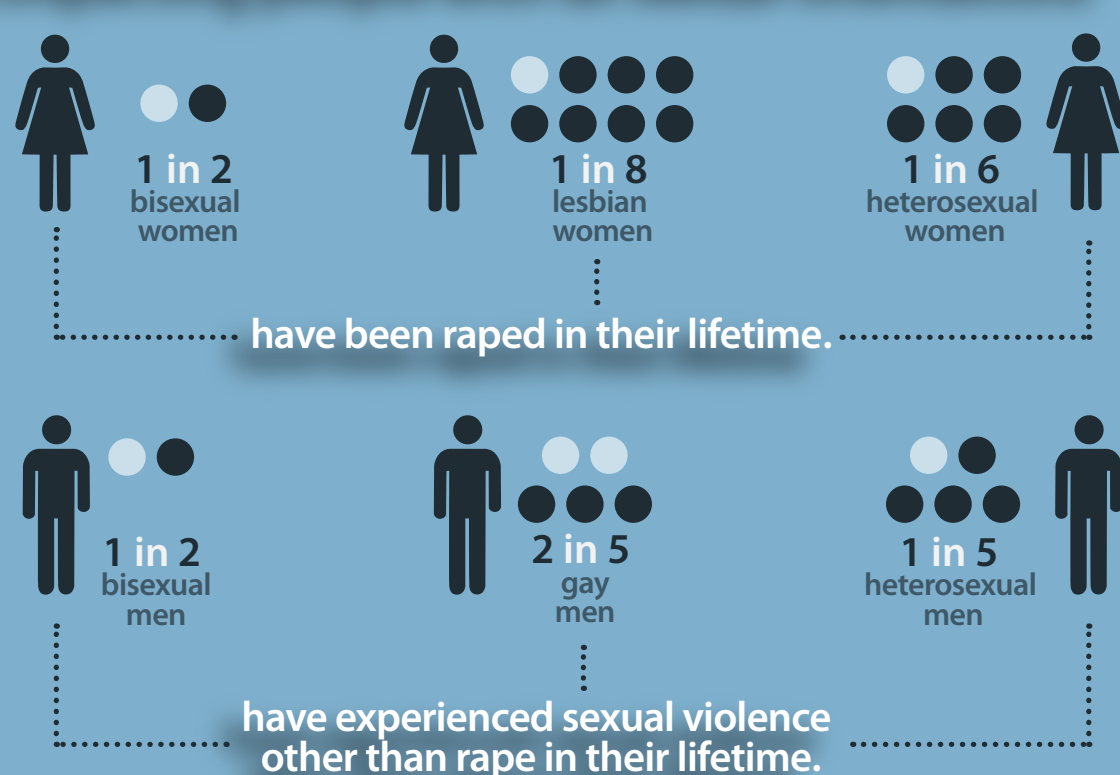


...varying by income.\*

Women with a household income less than \$50,000 have a significantly higher prevalence of IPV.



...impacting people with all sexual orientations.▲



## They cause far-reaching health issues

...creating a ripple effect of consequences beyond immediate injury.

**27%** of women **12%** of men

have experienced contact sexual violence, physical violence, or stalking by an intimate partner and reported significant short- or long-term impacts, such as post-traumatic stress disorder symptoms and injury.\*

**Everyone deserves a life free of violence.**  
*The good news is violence is preventable.*

Visit [www.cdc.gov/violenceprevention](http://www.cdc.gov/violenceprevention) and help make your community safer.



#### Sources:

- ★ The National Intimate Partner and Sexual Violence Survey (NISVS): 2010 Summary Report. Atlanta, GA: National Center for Injury Prevention and Control, Centers for Disease Control and Prevention.
- Prevalence and Characteristics of Sexual Violence, Stalking, and Intimate Partner Violence Victimization in the United States—National Intimate Partner and Sexual Violence Survey, United States, 2011. MMWR 2014; 63(SS-8): 1-18.
- Intimate Partner Violence in the United States — 2010. Atlanta, GA: National Center for Injury Prevention and Control, Centers for Disease Control and Prevention.
- ▲ The National Intimate Partner and Sexual Violence Survey (NISVS): 2010 Findings on Victimization by Sexual Orientation. Atlanta, GA: National Center for Injury Prevention and Control, Centers for Disease Control and Prevention.