

**STATE OF HAWAII  
DEPARTMENT OF HUMAN SERVICES**

**2016  
HAWAII CHILD CARE MARKET RATE STUDY  
SUMMARY OF RESULTS**

Audit, Quality Control and Research Office  
Research Staff  
March 2017

### **INTRODUCTION**

The purpose of this study is to examine current market rates for child care in Hawaii. Federal regulations 45 CFR Parts 98.43(b)(2) and 98.16 require that the Hawaii's Department of Human Services (DHS) complete a biennial child care market rate study as part of Hawaii's state plan for expenditure of federal Child Care Development Fund (CCDF) monies.

Information about current child care rates is used to determine subsidy payment rates which ensure equal access to child care. This would equate to access to child care which is comparable to child care received by and paid for by families who are ineligible for subsidies. The sole purpose of this study is to examine current market rate conditions for child care in Hawaii. The subsidy payment rate setting process will be completed at a later date.

### **METHODOLOGY**

#### **HAWAII'S CHILD CARE RESOURCE AND REFERRAL AGENCY**

PATCH (People Attentive to Children) is Hawaii's child care resource and referral (CCR&R) agency. Through a contractual agreement with DHS, PATCH provides child care referral services to the public and maintains rate and other information about child care providers in the community. PATCH is a member of the National Association of Child Care Resource and Referral Agencies (NACCRRRA), a national network of more than 600 child care resource and referral agencies across the United States.

PATCH maintains CCR&R information in a proprietary NACCRRRA data system. Annually, PATCH surveys child care providers in Hawaii and updates information maintained in this system. Providers can complete the survey in hard-copy or electronic format. The survey process includes follow-up contact with providers who have not completed the survey by the deadline date or, have submitted surveys but clarification is needed for incomplete information.

PATCH completed the survey process and a data extract was created from the NACCRRRA system in December 2016 and provided to DHS' Audit, Quality Control and Research Office - Research Staff. Using SAS statistical software, child care rate data was analyzed and summary reports were created.

## 2016 Hawaii Child Care Market Rate Study

---

### SURVEY PARTICIPATION

There were a total of 923 child care providers listed in the data extract. Of these providers, 287 were excluded from this study for the following reasons.

Providers affiliated with Head Start, Kamehameha Schools (private preschool) and local hotels/resorts were excluded from the analysis of survey data.

Although these providers may have completed a survey, they were not included in this study of market rates since they would not offer child care to the general public. Also excluded were providers licensed for before/after school child care but only offered this care to students who already were attending the school or facility during the regular school day. Other reasons that providers were excluded from this study:

- inactive/closed provider status,
- rate information that was missing,
- rate information that related to part-time, not full-time care, and
- missing capacity information.

After these exclusions, 636 surveyed providers were included in the final analysis. A total of 2,753 rates from these providers were used in the study.

Total Providers in Data Extract	Number of Providers Excluded	Total Providers Included in Study	Number of Rates From Providers Included in Study
923	287	636	2,753

### DATA ELEMENTS

#### License Type

Providers with the following license types were included in child care rate analysis: a) Licensed Before/After School Program, b) Licensed Family Home, c) Licensed Group Home, d) Licensed Infant/Toddler Center, and e) Licensed Preschool.

#### Full-time Monthly Rates

Only full-time monthly rates were analyzed. Monthly rate data that was zero or missing, or rate data that could not be associated with an age group range were excluded from the analysis. Additionally, rates were excluded if it was clearly indicated in the survey comments section that the rate listed as a full-time monthly rate was instead for a time period other than monthly (e.g. for an entire school year or for a summer school session). There was no conversion of longer-term rates to monthly rates.

## **2016 Hawaii Child Care Market Rate Study**

---

### Age Group

Full-time monthly rates were associated with the following age ranges:

a) 0 to 18 months, b) 18 months to 2 years, c) 2 to 3 years, d) 3 to 4 years, e) 4 to 5 years, f) 5 to 10 years, and g) 11 to 15 years. If age range information was missing, the corresponding monthly rate was excluded from analysis.

In some cases, multiple rates were listed for the same age group range. The higher of the rates was selected for that age range.

### Accreditation

For the purposes of this study, a child care provider was considered to be accredited if it possessed National Association for the Education of Young Children (NAEYC) or National Early Childhood Program Accreditation (NECPA) designation.

### Island and Zip Code

Rate information is presented as follows: a) Statewide, b) by island, and c) by county - Maui County is comprised of the islands of Maui, Molokai, and Lanai; Hawaii County is comprised of West and East sections of the island of Hawaii.

Child care market rate information is also shown by urban and rural classifications. For this study, urban was defined as providers with a zip code prefix of 968xx; this zip code prefix is assigned to Honolulu metropolitan areas. All other zip codes were classified as rural (zip codes with prefix 967xx).

## TYPE OF CARE

Based on the license types and age group ranges described above, child care rates were segregated into the following types of care: a) Center Based Infant/Toddler Care, b) NAEYC or NECPA Accredited Center Based Care, c) Licensed Center Based or Group Child Care Home, d) Licensed Family Child Care Home - Infant/Toddler Care, e) Licensed Family Child Care Home, and f) Licensed Before School Care/After School Care.

The following tables report child care market rate data by type of care groupings described above. Listed are figures for the number of providers, number of rates associated with these providers and summary statistical rate information: mean, median, minimum rate, maximum rate and 75% quantile. It is suggested by CCDF that as a benchmark, rates established at least at the 75<sup>th</sup> percentile “would be regarded as providing equal access”.<sup>1</sup>

---

<sup>1</sup> Deana Grobe, Roberta B. Weber, Clara C. Pratt, and Arthur C. Emlen; *Market Rate Study Guidebook: A Guide to Implementing a Child Care Market Rate Study Using Child Care Resource and Referral Data* (September 2003, Oregon Child Care Research Partnership; page 9 footnote.

## **2016 Hawaii Child Care Market Rate Study**

---

### WEIGHTING OF DATA

Full-time monthly rates were weighted by total desired capacity of each provider. The desired capacity rather than licensed capacity was used because individual providers do not always chose to enroll the maximum number of children they are licensed to serve.

For providers with missing desired capacity information, licensed capacity was used. A provider's rate data was excluded from the analysis if both desired and licensed capacity were missing.

### SUMMARY OF FINDINGS

This study examined current child care market rates in Hawaii. Monthly rate data was analyzed from a total of 636 child care providers. This data was obtained through surveys administered by the local CCR&R agency during the first half of 2016.

As in previous years, results showed that child care market rates are higher for younger children and center-based care, and rates are lower for family child care. It is preferable to examine child care rates by statewide, county, or urban/rural classifications rather than by island because limited rate information was available for some of the islands.

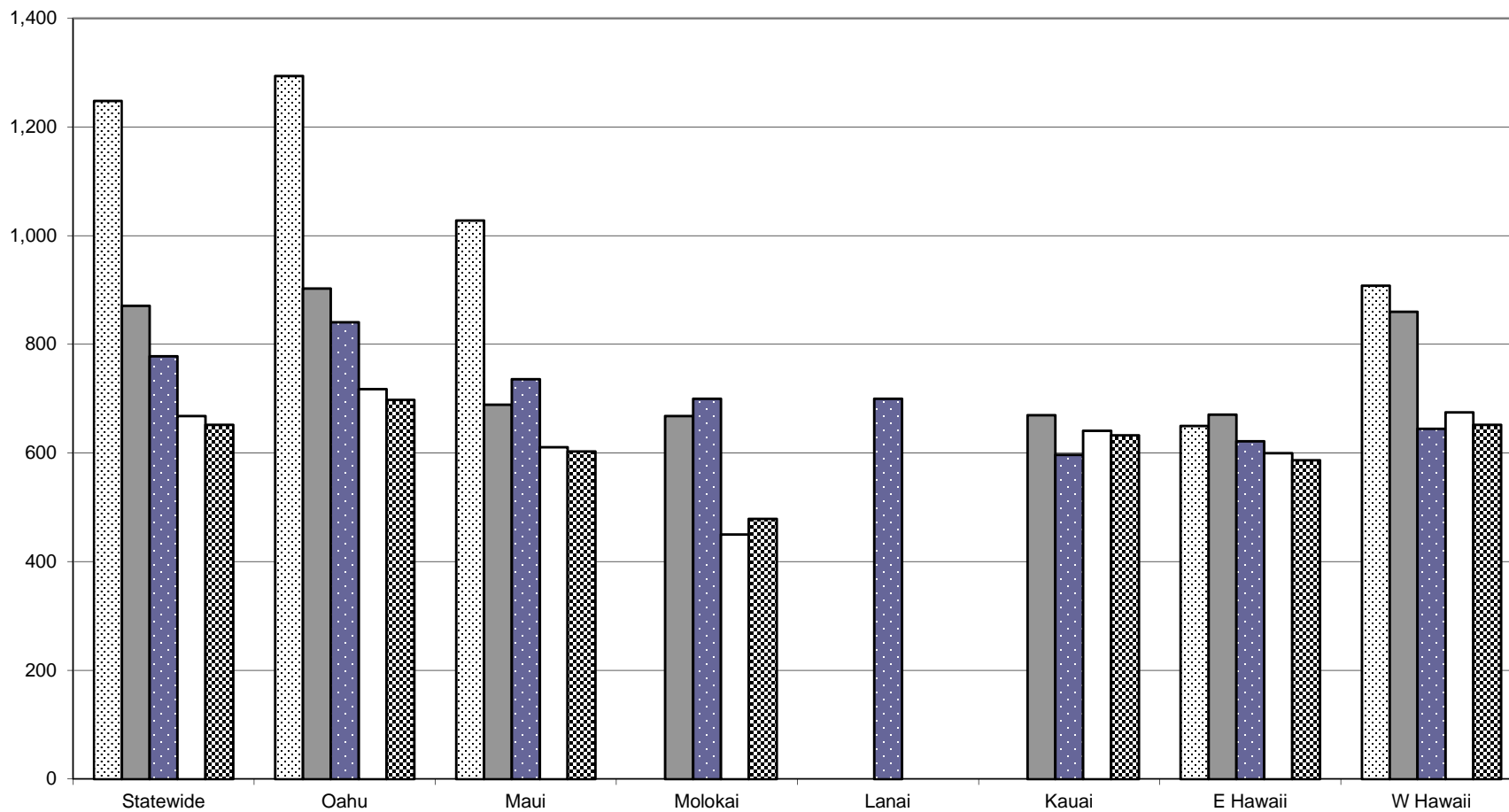
**Tables  
&  
Charts**

**STATEWIDE**

**Child Care Rate Study - 2016  
Full-time Monthly Rates**

<b>Type of Care</b>	<b># of Providers</b>	<b># of Rates</b>	<b>Mean<sup>1</sup></b> ( \$ )	<b>Median<sup>2</sup></b> ( \$ )	<b>Minimum Rate</b> ( \$ )	<b>Maximum Rate</b> ( \$ )	<b>75% Quantile<sup>3</sup></b> ( \$ )
Center Based Infant/Toddler Care	50	90	1,248	1,140	625	1,795	1,490
Accredited (NAEYC or NECPA) Center-Based Care	102	227	871	810	535	1,655	919
Licensed Center-Based or Group Child Care Home	177	434	778	740	450	1,749	875
Licensed Family Child Care Home - Infant/Toddler Care	334	642	670	650	425	1,350	700
Licensed Family Child Care Home	344	1,360	652	650	400	1,350	700
Licensed Before School Care/After School Care	<i>Insufficient number of providers</i>		---	---	---	---	---

STATEWIDE - Mean Full-time Monthly Rates - 2016



- Center Based Infant/Toddler Care
- Accredited (NAEYC or NECPA) Center-Based Care
- Licensed Center-Based or Group Child Care Home
- Licensed Family Child Care Home Infant/Toddler Care
- Licensed Family Child Care Home



**OAHU**

**Child Care Rate Study - 2016  
Full-time Monthly Rates**

<b>Type of Care</b>	<b># of Providers</b>	<b># of Rates</b>	<b>Mean<sup>1</sup></b> ( \$ )	<b>Median<sup>2</sup></b> ( \$ )	<b>Minimum Rate</b> ( \$ )	<b>Maximum Rate</b> ( \$ )	<b>75% Quantile<sup>3</sup></b> ( \$ )
Center Based Infant/Toddler Care	38	70	1,294	1,200	625	1,795	1,545
Accredited (NAEYC or NECPA) Center-Based Care	75	169	903	845	575	1,655	940
Licensed Center-Based or Group Child Care Home	100	254	841	800	481	1,749	910
Licensed Family Child Care Home - Infant/Toddler Care	173	334	718	700	450	1,350	775
Licensed Family Child Care Home	173	708	698	700	450	1,350	750
Licensed Before School Care/After School Care	<i>Insufficient number of providers</i>		---	---	---	---	---

**MAUI COUNTY**

**Child Care Rate Study - 2016  
Full-time Monthly Rates**

<b>Type of Care</b>	<b># of Providers</b>	<b># of Rates</b>	<b>Mean<sup>1</sup></b> ( \$ )	<b>Median<sup>2</sup></b> ( \$ )	<b>Minimum Rate</b> ( \$ )	<b>Maximum Rate</b> ( \$ )	<b>75% Quantile<sup>3</sup></b> ( \$ )
Center Based Infant/Toddler Care	8	13	1,028	950	829	1,260	1,120
Accredited (NAEYC or NECPA) Center-Based Care	19	40	687	675	535	940	730
Licensed Center-Based or Group Child Care Home	32	74	733	700	500	1,065	875
Licensed Family Child Care Home - Infant/Toddler Care	59	111	607	600	425	1,000	650
Licensed Family Child Care Home	61	211	599	600	400	875	650
Licensed Before School Care/After School Care	<i>Insufficient number of providers</i>		---	---	---	---	---

**MAUI**

**Child Care Rate Study - 2016  
Full-time Monthly Rates**

<b>Type of Care</b>	<b># of Providers</b>	<b># of Rates</b>	<b>Mean<sup>1</sup></b> ( \$ )	<b>Median<sup>2</sup></b> ( \$ )	<b>Minimum Rate</b> ( \$ )	<b>Maximum Rate</b> ( \$ )	<b>75% Quantile<sup>3</sup></b> ( \$ )
Center Based Infant/Toddler Care	8	13	1,028	950	829	1,260	1,120
Accredited (NAEYC or NECPA) Center-Based Care	17	36	689	675	535	940	730
Licensed Center-Based or Group Child Care Home	30	70	736	700	500	1,065	910
Licensed Family Child Care Home - Infant/Toddler Care	57	107	611	600	425	1,000	650
Licensed Family Child Care Home	59	203	603	600	400	875	650
Licensed Before School Care/After School Care	<i>Insufficient number of providers</i>		---	---	---	---	---

**MOLOKAI**

**Child Care Rate Study - 2016  
Full-time Monthly Rates**

<b>Type of Care</b>	<b># of Providers</b>	<b># of Rates</b>	<b>Mean<sup>1</sup></b> ( \$ )	<b>Median<sup>2</sup></b> ( \$ )	<b>Minimum Rate</b> ( \$ )	<b>Maximum Rate</b> ( \$ )	<b>75% Quantile<sup>3</sup></b> ( \$ )
Center Based Infant/Toddler Care	0	0	---	---	---	---	---
Accredited (NAEYC or NECPA) Center-Based Care	2	4	668	675	660	675	675
Licensed Center-Based or Group Child Care Home	1	2	700	700	700	700	700
Licensed Family Child Care Home - Infant/Toddler Care	2	4	473	450	450	500	500
Licensed Family Child Care Home	2	8	479	500	450	500	500
Licensed Before School Care/After School Care	<i>Insufficient number of providers</i>		---	---	---	---	---

**LANAI**

**Child Care Rate Study - 2016  
Full-time Monthly Rates**

<b>Type of Care</b>	<b># of Providers</b>	<b># of Rates</b>	<b>Mean<sup>1</sup></b> ( \$ )	<b>Median<sup>2</sup></b> ( \$ )	<b>Minimum Rate</b> ( \$ )	<b>Maximum Rate</b> ( \$ )	<b>75% Quantile<sup>3</sup></b> ( \$ )
Center Based Infant/Toddler Care	0	0	---	---	---	---	---
Accredited (NAEYC or NECPA) Center-Based Care	0	0	---	---	---	---	---
Licensed Center-Based or Group Child Care Home	1	2	700	700	700	700	700
Licensed Family Child Care Home - Infant/Toddler Care	0	0	---	---	---	---	---
Licensed Family Child Care Home	0	0	---	---	---	---	---
Licensed Before School Care/After School Care	<i>Insufficient number of providers</i>		---	---	---	---	---

**KAUAI**

**Child Care Rate Study - 2016  
Full-time Monthly Rates**

<b>Type of Care</b>	<b># of Providers</b>	<b># of Rates</b>	<b>Mean<sup>1</sup></b> ( \$ )	<b>Median<sup>2</sup></b> ( \$ )	<b>Minimum Rate</b> ( \$ )	<b>Maximum Rate</b> ( \$ )	<b>75% Quantile<sup>3</sup></b> ( \$ )
Center Based Infant/Toddler Care	0	0	---	---	---	---	---
Accredited (NAEYC or NECPA) Center-Based Care	2	5	670	630	630	715	715
Licensed Center-Based or Group Child Care Home	18	42	597	575	500	700	680
Licensed Family Child Care Home - Infant/Toddler Care	30	58	641	650	500	800	650
Licensed Family Child Care Home	33	134	633	650	500	850	650
Licensed Before School Care/After School Care	<i>Insufficient number of providers</i>		---	---	---	---	---

**HAWAII COUNTY**

**Child Care Rate Study - 2016  
Full-time Monthly Rates**

<b>Type of Care</b>	<b># of Providers</b>	<b># of Rates</b>	<b>Mean<sup>1</sup></b> ( \$ )	<b>Median<sup>2</sup></b> ( \$ )	<b>Minimum Rate</b> ( \$ )	<b>Maximum Rate</b> ( \$ )	<b>75% Quantile<sup>3</sup></b> ( \$ )
Center Based Infant/Toddler Care	4	7	878	925	650	925	925
Accredited (NAEYC or NECPA) Center-Based Care	6	13	756	680	600	925	850
Licensed Center-Based or Group Child Care Home	27	64	632	649	450	890	700
Licensed Family Child Care Home - Infant/Toddler Care	72	139	619	600	500	950	650
Licensed Family Child Care Home	77	307	605	600	400	800	650
Licensed Before School Care/After School Care	<i>Insufficient number of providers</i>		---	---	---	---	---

**EAST HAWAII**

**Child Care Rate Study - 2016  
Full-time Monthly Rates**

<b>Type of Care</b>	<b># of Providers</b>	<b># of Rates</b>	<b>Mean<sup>1</sup></b> ( \$ )	<b>Median<sup>2</sup></b> ( \$ )	<b>Minimum Rate</b> ( \$ )	<b>Maximum Rate</b> ( \$ )	<b>75% Quantile<sup>3</sup></b> ( \$ )
Center Based Infant/Toddler Care	1	1	650	650	650	650	650
Accredited (NAEYC or NECPA) Center-Based Care	2	5	671	680	600	680	680
Licensed Center-Based or Group Child Care Home	14	29	622	649	450	757	675
Licensed Family Child Care Home - Infant/Toddler Care	52	100	600	600	500	800	650
Licensed Family Child Care Home	57	213	587	600	400	700	650
Licensed Before School Care/After School Care	<i>Insufficient number of providers</i>		---	---	---	---	---



**WEST HAWAII**

**Child Care Rate Study - 2016  
Full-time Monthly Rates**

<b>Type of Care</b>	<b># of Providers</b>	<b># of Rates</b>	<b>Mean<sup>1</sup></b> ( \$ )	<b>Median<sup>2</sup></b> ( \$ )	<b>Minimum Rate</b> ( \$ )	<b>Maximum Rate</b> ( \$ )	<b>75% Quantile<sup>3</sup></b> ( \$ )
Center Based Infant/Toddler Care	3	6	908	925	675	925	925
Accredited (NAEYC or NECPA) Center-Based Care	4	8	860	850	850	925	850
Licensed Center-Based or Group Child Care Home	13	35	645	650	500	890	700
Licensed Family Child Care Home - Infant/Toddler Care	20	39	675	650	535	950	745
Licensed Family Child Care Home	20	94	652	650	535	800	725
Licensed Before School Care/After School Care	<i>Insufficient number of providers</i>		---	---	---	---	---

**URBAN**

**Child Care Rate Study - 2016  
Full-time Monthly Rates**

<b>Type of Care</b>	<b># of Providers</b>	<b># of Rates</b>	<b>Mean<sup>1</sup></b> ( \$ )	<b>Median<sup>2</sup></b> ( \$ )	<b>Minimum Rate</b> ( \$ )	<b>Maximum Rate</b> ( \$ )	<b>75% Quantile<sup>3</sup></b> ( \$ )
Center Based Infant/Toddler Care	19	34	1,199	1,140	625	1,795	1,385
Accredited (NAEYC or NECPA) Center-Based Care	36	83	971	900	645	1,655	990
Licensed Center-Based or Group Child Care Home	48	120	866	800	530	1,749	975
Licensed Family Child Care Home - Infant/Toddler Care	47	92	793	750	540	1,350	850
Licensed Family Child Care Home	46	179	785	750	600	1,350	850
Licensed Before School Care/After School Care	<i>Insufficient number of providers</i>		---	---	---	---	---

**RURAL**

**Child Care Rate Study - 2016  
Full-time Monthly Rates**

<b>Type of Care</b>	<b># of Providers</b>	<b># of Rates</b>	<b>Mean<sup>1</sup></b> ( \$ )	<b>Median<sup>2</sup></b> ( \$ )	<b>Minimum Rate</b> ( \$ )	<b>Maximum Rate</b> ( \$ )	<b>75% Quantile<sup>3</sup></b> ( \$ )
Center Based Infant/Toddler Care	31	56	1,281	1,200	650	1,795	1,545
Accredited (NAEYC or NECPA) Center-Based Care	66	144	797	740	535	1,655	850
Licensed Center-Based or Group Child Care Home	129	314	738	700	450	1,725	860
Licensed Family Child Care Home - Infant/Toddler Care	287	550	646	650	425	1,000	700
Licensed Family Child Care Home	298	1,181	632	630	400	950	675
Licensed Before School Care/After School Care	<i>Insufficient number of providers</i>		---	---	---	---	---

## FOOTNOTES

- <sup>1</sup> The (arithmetic) mean is computed as the sum of all rates in a population divided by the number of elements in the population.  
*Source: SAS statistical software documentation.*
- <sup>2</sup> The sample median is the midpoint of the data; the point below and above which 50 percent of the values fall.
- <sup>3</sup> The "75% Quantile" is the value below which 75% of the rates fall and 25% of the rates are above that value.

A footnote in the publication *Market Rate Study Guidebook - A Guide to Implementing a Child Care Market Rate Study Using Child Care Resource & Referral Data*; Grobe et al., September 2003, states "The preamble to the CCDF Final Rule suggests as a benchmark that rates established at least at the 75th percentile 'would be regarded as providing equal access'."

**Introductory Letter**  
**&**  
**Survey Instrument**



April, 2016

Aloha,

PATCH is required by the Department of Human Services (DHS) to maintain a database of all licensed child care providers for statistical purposes, even those not wanting to be referred to families. By keeping your information up-to-date, PATCH is able to provide DHS and lawmakers with accurate statistical information which is used for policy and funding decisions. These decisions impact you as a child care professional.

PATCH may have recently requested your business information for our quarterly update, however, we ask you to please complete all of your information for this 2016 Annual Survey (included here is a brief description of each survey field to help you understand the data we are trying to maintain):

- Part 1 of the survey is a Provider Profile for Referrals page. Use this page to list current details about your child care business, so that our referral system will reflect accurate information.
- Part 2 lets you choose whether or not you would like PATCH to refer you to families and if you accept children receiving DHS subsidies. This section contains extra questions related to the child care you provide and to whom.
- Part 3 asks for business information, including details of your shifts, rates, and types of care offered.
- Part 4 includes additional program information and Registry information.

After completing all parts of the survey, please ensure to sign and date the last page.

**Complete and promptly return the Annual Survey to PATCH by April 29, 2016.** The PDF is not “savable” unless you have Adobe capabilities (you can download Adobe at <http://www.adobe.com/products/reader.html>). Without PDF capabilities you must print out the completed form and mail it back to us or scan it & email it back to us. If you have questions regarding this survey please feel free to call your local PATCH office.

Each day you have a lasting impact on the lives of Hawaii’s young children and their families. Today, parents are increasingly reliant on child care to enable them to go to work so they can support their families. In addition, high quality early childhood programs are critical in determining a child’s early development by helping to build a solid foundation for school and success in life. Thank you for all that you do each day for Hawaii’s children!

Mahalo

**Oahu Main Office**

560 N. Nimitz Highway  
Suite 218  
Honolulu, HI 96817-5330  
Tel: (808) 839-1988  
Fax: (808) 694-3061  
Patch@PatchHawaii.org  
www.PatchHawaii.org

**Preschool Open Doors**

Oahu Tel: (808) 791-2130  
Fax: (808) 839-1799  
Toll-Free: 1-800-746-5620

**Kauai**

4485 Pahe`e Street  
Suite 124  
Lihue, HI 96766-2018  
Tel: (808) 246-0622  
Fax: (808) 482-3791

**Maui**

1063 Lower Main Street  
Suite C214  
Wailuku, HI 96793-2038  
Tel: (808) 242-9232  
Fax: (808) 442-9642

**East Hawaii**

26 Waianuenu Ave.  
Hilo, HI 96720-2440  
Tel: (808) 961-3169  
Fax: (808) 238-3236

**West Hawaii**

79-7393 Mamaloha Hwy.  
Unit 4A  
Kealahou, HI 96750-7928  
Tel: (808) 322-3500  
Fax: (808) 238-3240

**Member of:**

Child Care Aware



Aloha United Way  
Kauai United Way  
Hawaii Island United Way



Agency Partner

Better Business Bureau of Hawaii



# PATCH

## Annual Provider Survey - April 201\*

### Part 1. PROVIDER PROFILE FOR REFERRALS

Name: \_\_\_\_\_

Business Name: \_\_\_\_\_

Business Licensed Capacity: \_\_\_\_\_ Desired Capacity: \_\_\_\_\_

Address: \_\_\_\_\_

City: \_\_\_\_\_ State: \_\_\_\_\_ Zip: \_\_\_\_\_

Primary Phone: \_\_\_\_\_ Second Phone: \_\_\_\_\_

Email: \_\_\_\_\_ Fax \_\_\_\_\_

### Part 2. PATCH ANNUAL SURVEY

Although we are required by DHS to maintain your information in our database, you can choose whether or not you want PATCH to refer your childcare business to families.

- Do you want PATCH to refer parents to your childcare business?  
 YES                       NO
- Families can now search for child care via PATCH's website: [www.PatchHawaii.org](http://www.PatchHawaii.org). Do you want families to be able to find your child care business on PATCH's website?  
 YES                       NO
- If YES, do you want PATCH to disclose the rates you charge to families who call us?  
 YES                       NO
- PATCH will email you information, including our newsletters, announcements that could affect you and the families you serve.  
What email address would you like us to use?  
\_\_\_\_\_
- If you do not have e-mail, please check here:     I Do not have e-mail

### Part 2a. CHILD CARE SUBSIDIES

PATCH would like to know about numbers of children who are being cared for who currently receive Department of Human Services child care subsidies.

- Do you currently accept Department of Human Services subsidized children?  
 YES                       NO
- If YES, how many children receiving subsidies are currently enrolled? \_\_\_\_\_
- If you answered NO, you do not accept subsidized children, please explain why not:  
\_\_\_\_\_
- If you previously did not accept subsidized children, but now do, please indicate why:  
 TO FILL SPACES       ECONOMIC REASONS       OTHER (Please Explain):  
\_\_\_\_\_

- How many children in your care are Hawaiian or part Hawaiian? \_\_\_\_\_  
(Your best estimate is fine.)
- If applicable, how many children are on your waiting list? \_\_\_\_\_

### Part 3. PROVIDER SHIFT/S

#### REGULAR SHIFT:

Days Open:    Monday    Tuesday    Wednesday    Thursday    Friday

Times Open:    \_\_\_\_\_    \_\_\_\_\_    \_\_\_\_\_    \_\_\_\_\_    \_\_\_\_\_

Times Closed: \_\_\_\_\_    \_\_\_\_\_    \_\_\_\_\_    \_\_\_\_\_    \_\_\_\_\_

Accepts Children:     Full-Time     Part-Time     Both

Duration:     Full Year     School Year     Summer Only

Types of Care:     Drop-In     Temp/Emergency     Before School     After School  
 Rotating     24 hours     Open Holidays

#### OTHER SHIFTS:

Days Open:    Monday    Tuesday    Wednesday    Thursday    Friday    Saturday    Sunday

Times Open:    \_\_\_\_\_    \_\_\_\_\_    \_\_\_\_\_    \_\_\_\_\_    \_\_\_\_\_    \_\_\_\_\_    \_\_\_\_\_

Times Closed: \_\_\_\_\_    \_\_\_\_\_    \_\_\_\_\_    \_\_\_\_\_    \_\_\_\_\_    \_\_\_\_\_    \_\_\_\_\_

Accepts Children:     Full-Time     Part-Time     Both

Duration:     Full Year     School Year     Summer Only

Types of Care:     Drop-In     Temp/Emergency     Before School     After School     Summer  
 Rotating     24 hours     Open Holidays     Intersession

Days Open:    Saturday    Sunday

Times Open:    \_\_\_\_\_    \_\_\_\_\_

Times Closed: \_\_\_\_\_    \_\_\_\_\_

Accepts Children:     Full-Time     Part-Time     Both

Duration:     Full Year     School Year     Summer Only

Types of Care:     Drop-In     Temp/Emergency     Before School     After School     Summer  
 Rotating     24 hours     Open Holidays     Intersession

- *Use the grids on the following page to indicate the rate(s) you charge for various age groups, the type of care provided and how many available spaces and spaces in use you have in total for each age group. Data on child care rates will be used to determine whether the DHS will change its subsidy rates.*



### Part 3a. PROVIDER RATES, SPACES AND TYPES OF CARE OFFERED

EXAMPLE

WEEKLY Rates and Availability	Weekly PT \$Rate	Weekly FT \$Rate	# of spaces in Use	# of Spaces Vacant	Type of
0 – 6 Months		585	2	1	C D
6 – 12 Months			1	0	C D
12 – 18 Months	565	540	0	0	C D
18 – 24 Months	555	492	3	5	C D

**Type of Care:**

- A = After School      E = Emergency/Temp
- B = Before School    F = 24 hour
- C = Open Holidays    G = Rotating
- D = Drop-In

FT = Full Time  
PT = Part Time

➤ Complete the grid(s) which apply to your child care program OR Attach a Rate Sheet to your completed survey.

HOURLY Rates and Availability	Hourly PT \$Rate	Hourly FT \$Rate	# of Spaces in Use	# of Spaces Vacant	Type of Care	DAILY Rates and Availability	Daily PT \$Rate	Daily FT \$Rate	# of Spaces in Use	# of Spaces Vacant	Type of Care
0-6 Months						0-6 Months					
6-12 Months						6-12 Months					
12-18 Months						12-18 Months					
18-24 Months						18-24 Months					
2 Yrs						2 Yrs					
3 Yrs						3 Yrs					
4 Yrs						4 Yrs					
5 - 10 Yrs						5 - 10 Yrs					
11 - 15 Yrs						11 - 15 Yrs					

WEEKLY Rates and Availability	Weekly PT Rate	Weekly FT \$Rate	# of Spaces in Use	# of spaces Vacant	Type of Care	MONTHLY Rates and Availability	Monthly PT \$Rate	Monthly FT \$Rate	# of Spaces in Use	# of Spaces Vacant	Type of Care
0-6 Months						0-6 Months					
6-12 Months						6-12 Months					
12-18 Months						12-18 Months					
18-24 Months						18-24 Months					
2 Yrs						2 Yrs					
3 Yrs						3 Yrs					
4 Yrs						4 Yrs					
5 - 10 Yrs						5 - 10 Yrs					
11 - 15 Yrs						11 - 15 Yrs					

### Part 4. PROGRAM & PROFESSIONAL REGISTRY INFORMATION

➤ **Meals Provided:**

- Breakfast       Morning Snack       Lunch       Dinner
- Afternoon Snack       USDA FoodÚ\* {       Special Meal

If you are not enrolled in the USDA Food Program, please explain why:

---

➤ **Do you provide respite care?:**

- YES       NO

**Part 4. PROGRAM & PROFESSIONAL REGISTRY INFORMATION CONTINUED**

➤ **Accreditation/CDA (select below, fill expiration date here):**\_\_\_\_\_

- NAFCC     NAEYC     WASC     AMS     NECPA  
 AWSNA     HAIS     NLSA     WCEA     FCC CDA

**C.A.N.O.E.S. (Career Access and Navigation of Early Childhood Systems) Registry Update**

➤ Have you used the CANOES Registry services within the past three months?

- YES**                       **NO**

➤ If YES, please feel free to share your experience, comments, and/or suggestions:

**Suggestions to improve PATCH services:**

**Please indicate the island on which your business operates by checking a box, then sign and date below, and return the completed form to PATCH.**

- Island:**    Oahu     East     West     Kauai     Maui     Lanai/   
(Check One)    Hawaii    Hawaii                      Molokai

\_\_\_\_\_  
**Your Name**

\_\_\_\_\_  
**Business Name**

By checking this box I attach my electronic signature which verifies completed answers, consents and information contained in my return email to PATCH of this 2015 Survey.

\_\_\_\_\_  
**Signature**

\_\_\_\_\_  
**Date**

PLEASE ENSURE TO COMPLETE ALL 4 PAGES AND SIGN HERE BEFORE RETURNING SURVEY FORM  
*If you have any questions regarding this survey, please contact your local PATCH office.*

**Thank you for taking this survey.**

The information you provided will be released to those who request it as required by the Department of Human Services and as a matter of public record.



## Field Descriptions

**Contact Information** – this area provides your basic information.

**Primary Phone** – this is the number families can call

**Email** – email address where we can email to you important information.

**Total Desired Capacity** – total number of children you will accept (this number should not be more than your licensed capacity but can be smaller if you accept less than what you are licensed for)

**Ages Served** – the age range of the children you accept under this license type. The age range should fall within the age range stated on your license.

**Additional Fees** – indicates whether you charge additional fees (such as Extended Day, Late Pick-Up Fees, Registration Fees, Separate Meal Fees, Late Payment Fees, Activity Fees, etc.). The amount charged for each type of additional fee is not required. Please feel free to attach a separate sheet if you have multiple fees.

**Days** – these are the days and times you are normally open for business

**Care Available** – this identifies whether you accept children

- On a full-time or part-time basis
- On a full year (Jan –Dec), school year, or summer only basis

**Rates** – if you don't want us to publish your rates it will ask parents to call you for the rates. However, when we periodically call you to update your information we are required by DHS to ask for your rates.

- If you have different rates for different ages, please indicate the rates for each age group.
- Please feel free to attach a separate sheet if you have multiple rates.

**Curriculum** – regular or particular programming designed for specific ages.

**Respite** – temporary/short term care of children with special needs to provide relief to the primary caregiver.

**Meals** – these are the meals that you provide to the children. They do not include meals furnished by parents. It also indicates whether you participate in the USDA Child Care Food Program.

**Accreditation** – if your operation has been accredited by such organizations such as the National Association of Family Child Care (NAFCC), the National Association of the Education of Young Children (NAEYC), the Western Association of Schools and Colleges (WASC), etc. If you have not done so already, please furnish us a copy of your most recent certificate.

**C.A.N.O.E.S. Registry** –if you are employed in a Group Child Care Center you are required by DHS to be registered in the C.A.N.O.E.S. Registry. PATCH is the administrator of this program.



**PATCH**

Supporting Hawaii's Child Care Needs

**Oahu**

560 North Nimitz Highway  
Suite 218  
Honolulu, HI 96817  
Tel: (808) 839-1988  
Fax: (808) 694-3061  
Patch@PatchHawaii.org  
www.PatchHawaii.org

**Kauai**

4485 Pahe'e St.  
Suite 124  
Lihue, HI 96766-2018  
Tel: (808) 246-0622  
Fax: (808) 482-3791

**Maui**

1063 Lower Main St.  
Suite C214  
Wailuku, HI 96793  
Tel: (808) 242-9232  
Fax: (808) 442-9642

**East Hawaii**

26 Waianuenu Ave.  
Hilo, HI 96720  
Tel: (808) 961-3169  
Fax: (808) 238-3236

**West Hawaii**

79-7393 Mamalahoa Hwy.  
Suite 4A  
Kailua-Kona, HI 96740  
Tel: (808) 322-3500  
Fax: (808) 238-3240

Dear Child Care Provider:

Thank you for completing and returning the Annual Provider Survey 2016 to us. Your information has been entered into our database.

This letter is to confirm that you choose:

- To be referred to families looking for child care
- To have your rates given to families looking for child care
- Not to have your rates given to families looking for child care
- Not to be referred to families looking for child care
- To be referred to families looking for child care via PATCH's website at [www.PatchHawaii.org](http://www.PatchHawaii.org)
- Not to be referred to families looking for child care via PATCH's website

If you have agreed to be on our referral list, your name will be randomly listed along with other child care providers for families searching for child care as long as you remain licensed and in good standing with the State's Department of Human Services (DHS). We have included a sample of what PATCH will send to families looking for child care referrals.

We ask that you keep us informed of any changes so that we can provide parents with accurate and up-to-date information about you and your business. PATCH is required to call you to update your information each quarter.

If you have any questions or concerns please feel free to call your local PATCH office or email us at [Patch@patch-hi.org](mailto:Patch@patch-hi.org). We look forward to working with you and wish you all the best in your child care business.

Mahalo,

**Member of**

National Association of Child  
Care Resource & Referral  
Agencies

Aloha United Way

Kauai United Way

Attachment: Provider Referral Printout

