

# State of Hawai‘i Department of Human Services



Med-QUEST Division

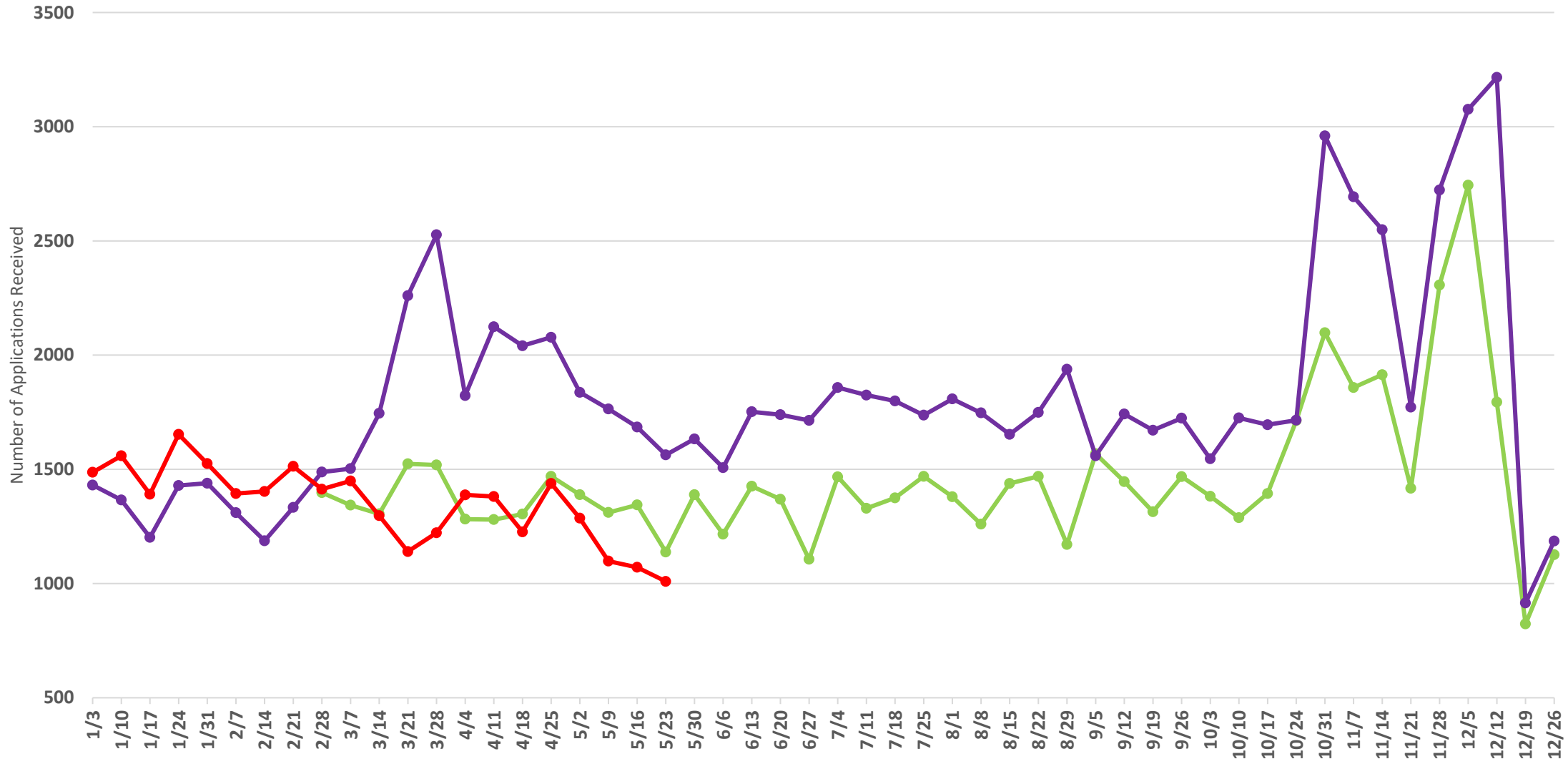
Weekly Application and Enrollment Data Update

6/1/2021

Increase in weekly applications received by County from the year before the pandemic (March 2019 – February 2020) compared to the period since March 2020

County	Average Weekly Application Count Year Before Pandemic	Average Weekly Application Count Since March 2020	Average Percentage Increase in Applications
Honolulu	884	1052	19%
Maui	198	275	39%
Hawai'i	264	270	2%
Kaua'i	89	116	30%
Statewide	1,435	1,713	19%

# Hawai'i Medicaid Applications Received Per Week



Week Beginning Based on 2021 Date and Corresponding Weeks From Previous Years

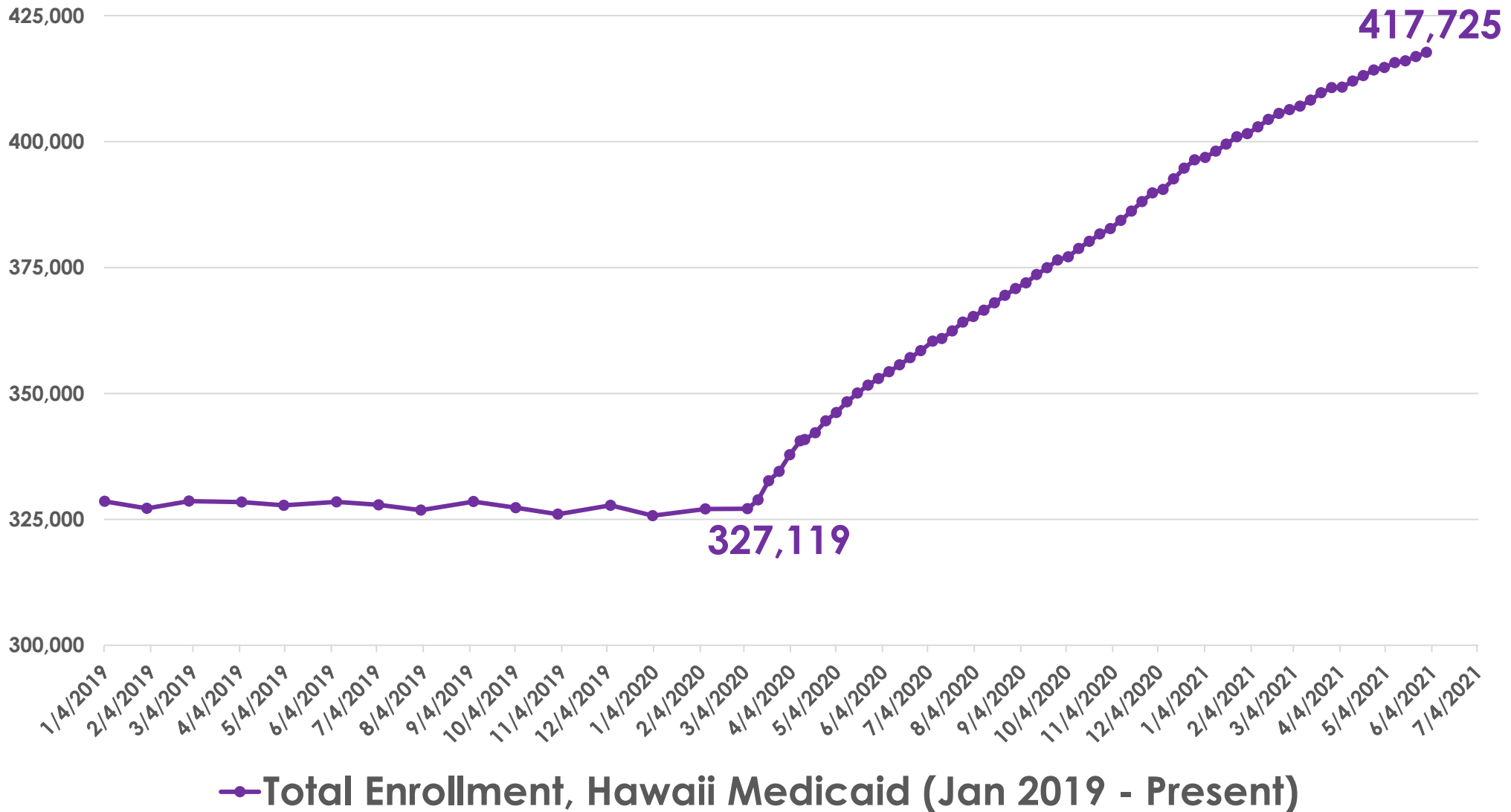
● 2019 ● 2020 ● 2021

Application increase in Nov-Dec reflects additional application activity due to the Federal Marketplace open enrollment period.

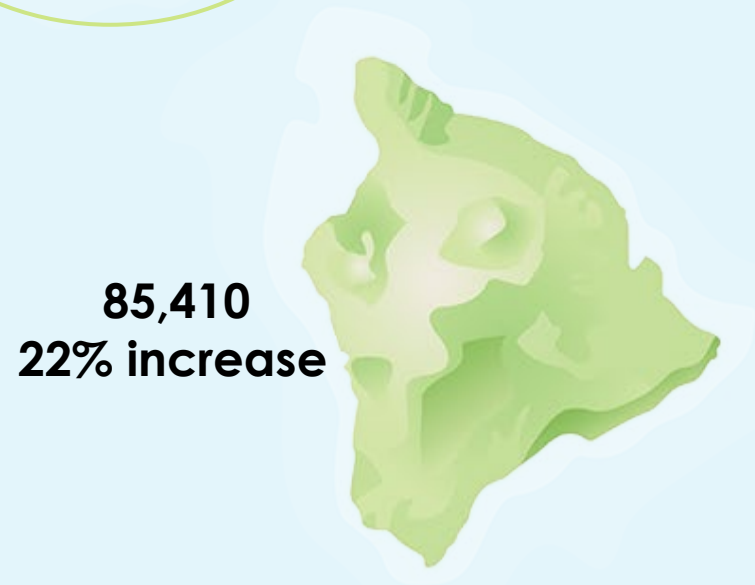
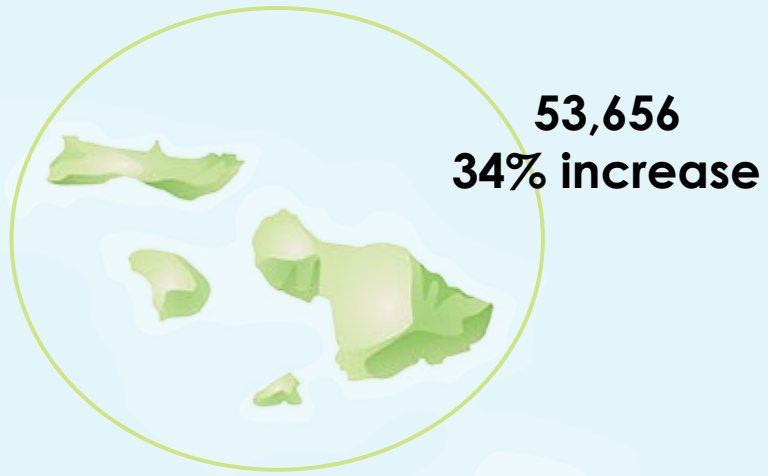
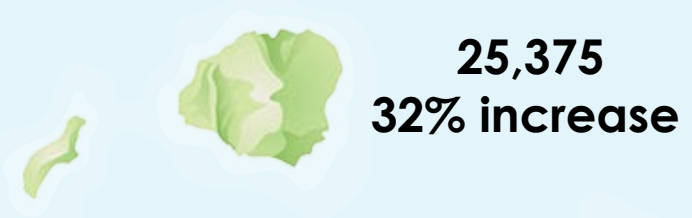
# Hawai'i Medicaid Monthly Enrollment: January 2019 to present

90,606 New Enrollments since 3/6/2020

28% Increase in enrollments in 64.5 weeks



Current Medicaid enrollment by County and Percentage increase in enrollments since March 6, 2020



## Since March 6, 2020:

Total Medicaid Applications Received:  
**110,219**

Total New Medicaid Enrollments:  
**90,606**

Percentage of Applications Eligible for Medicaid:  
**82.2%**