

State of Hawai‘i Department of Human Services



Med-QUEST Division

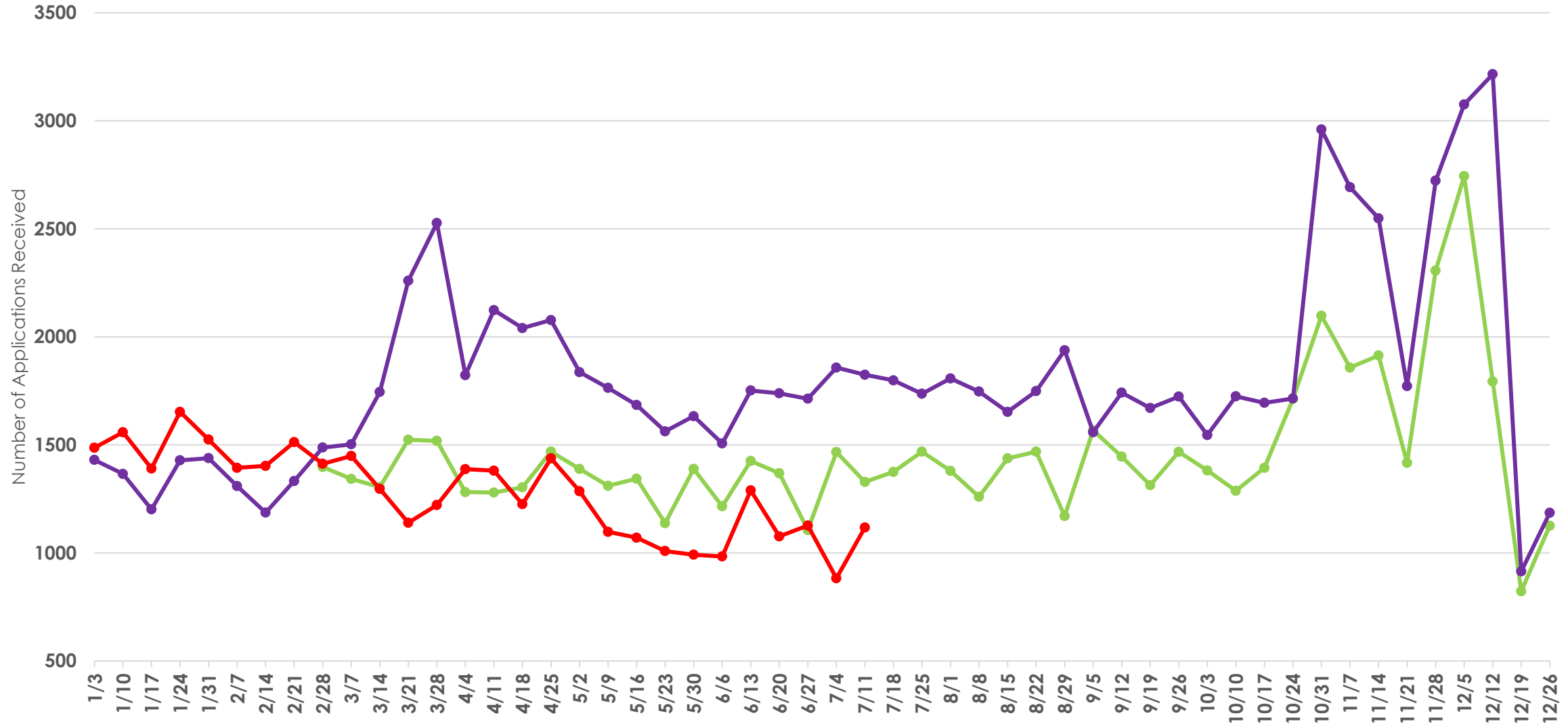
Weekly Application and Enrollment Data Update

7/19/2021

Increase in weekly applications received by County from the year before the pandemic (March 2019 – February 2020) compared to the period since March 2020

County	Average Weekly Application Count Year Before Pandemic	Average Weekly Application Count Since March 2020	Average Percentage Increase in Applications
Honolulu	884	1014	15%
Maui	198	263	33%
Hawai'i	264	262	-1%
Kaua'i	89	111	25%
Statewide	1,435	1,650	15%

Hawai'i Medicaid Applications Received Per Week



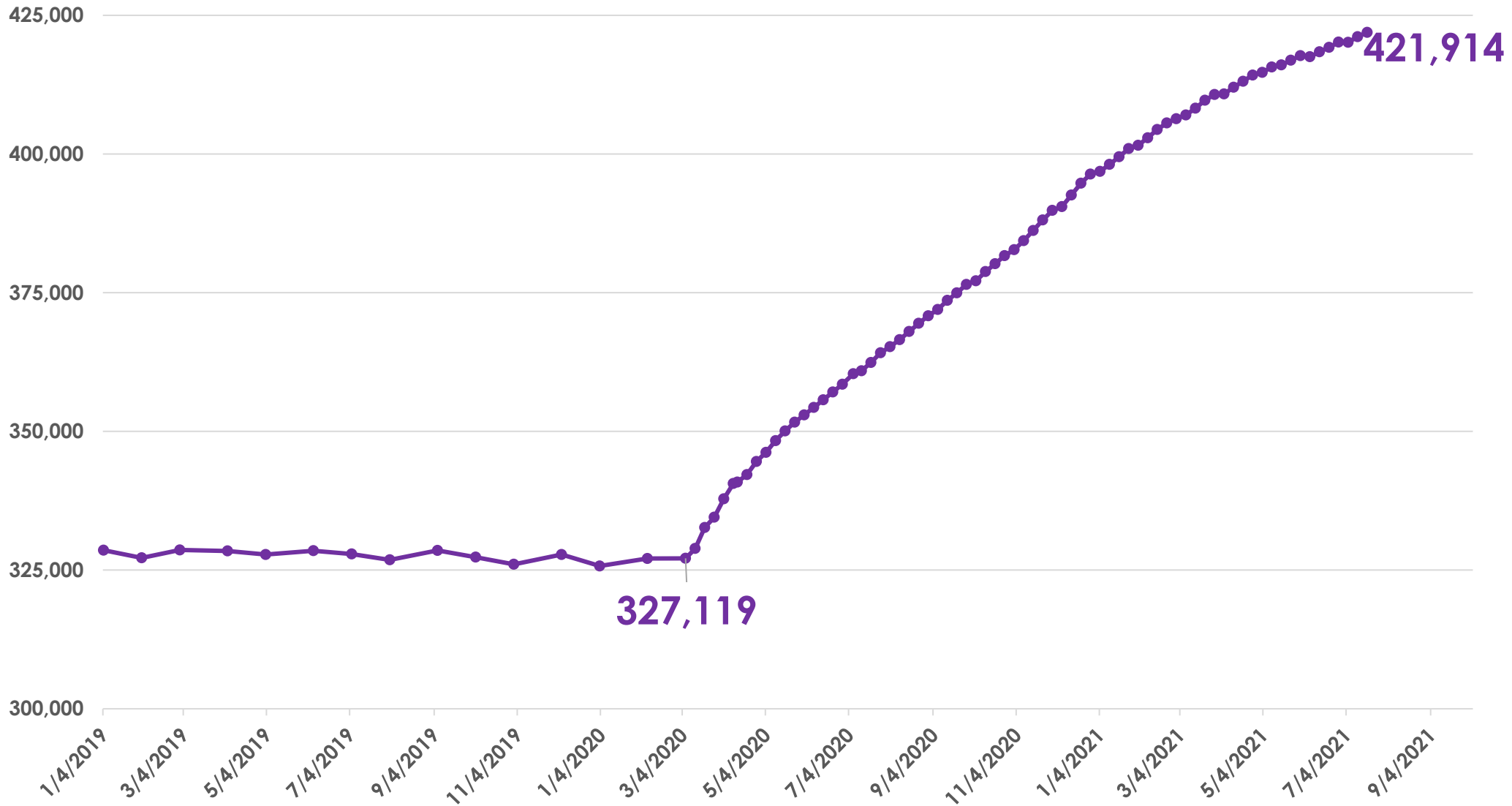
Week Beginning Based on 2021 Date and Corresponding Weeks From Previous Years

—●— 2019 —●— 2020 —●— 2021

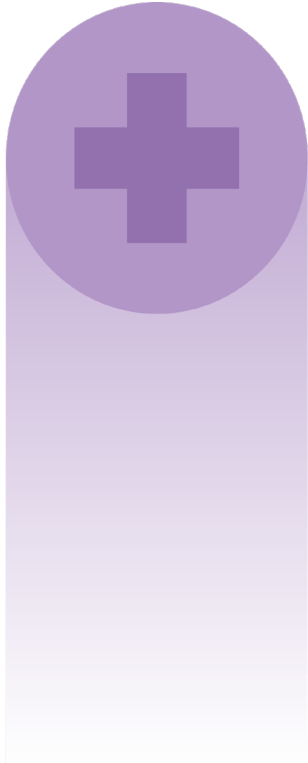
Application increase in Nov-Dec reflects additional application activity due to the Federal Marketplace open enrollment period.

Hawai'i Medicaid Monthly Enrollment: January 2019 to present

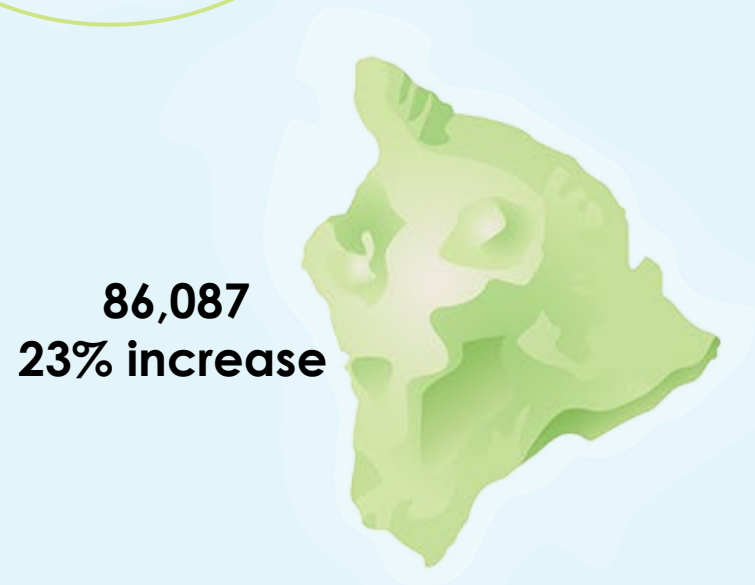
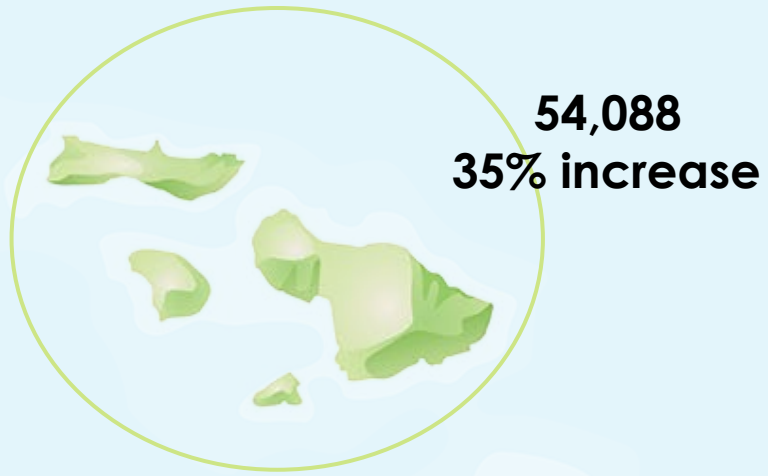
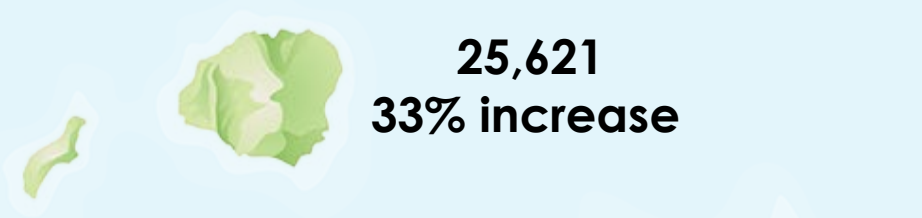
94,795 New Enrollments since 3/6/2020 (29% Increase)



—● Total Enrollment, Hawaii Medicaid (Jan 2019 - Present)



Current Medicaid enrollment by County and Percentage increase in enrollments since March 6, 2020



Since March 6, 2020:

Total Medicaid Applications Received:
117,690

Total New Medicaid Enrollments:
94,795

Percentage of Applications Eligible for Medicaid:
80.5%