

# State of Hawai‘i Department of Human Services

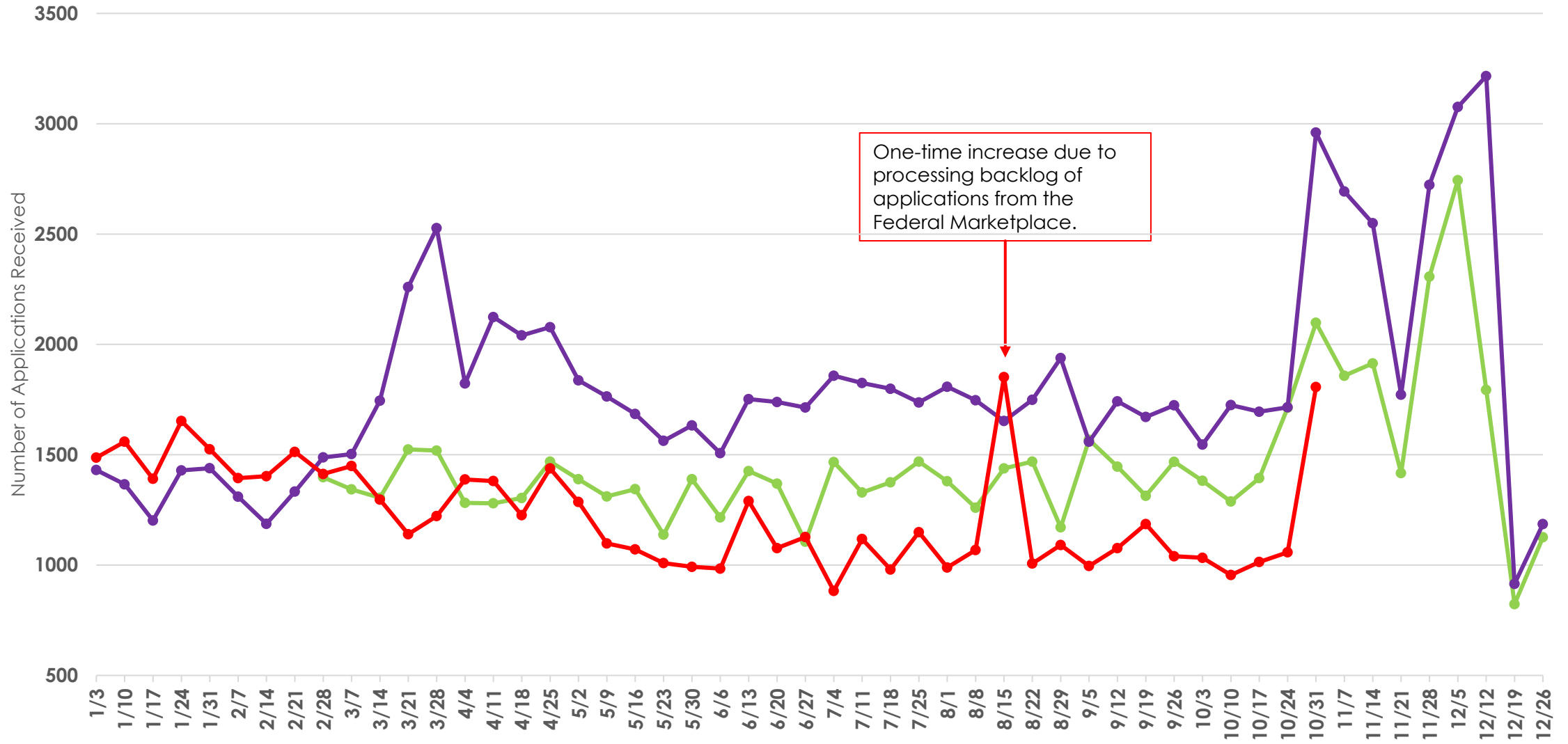


Med-QUEST Division

Application and Enrollment Data Update

11/08/2021

# Hawai'i Medicaid Applications Received Per Week



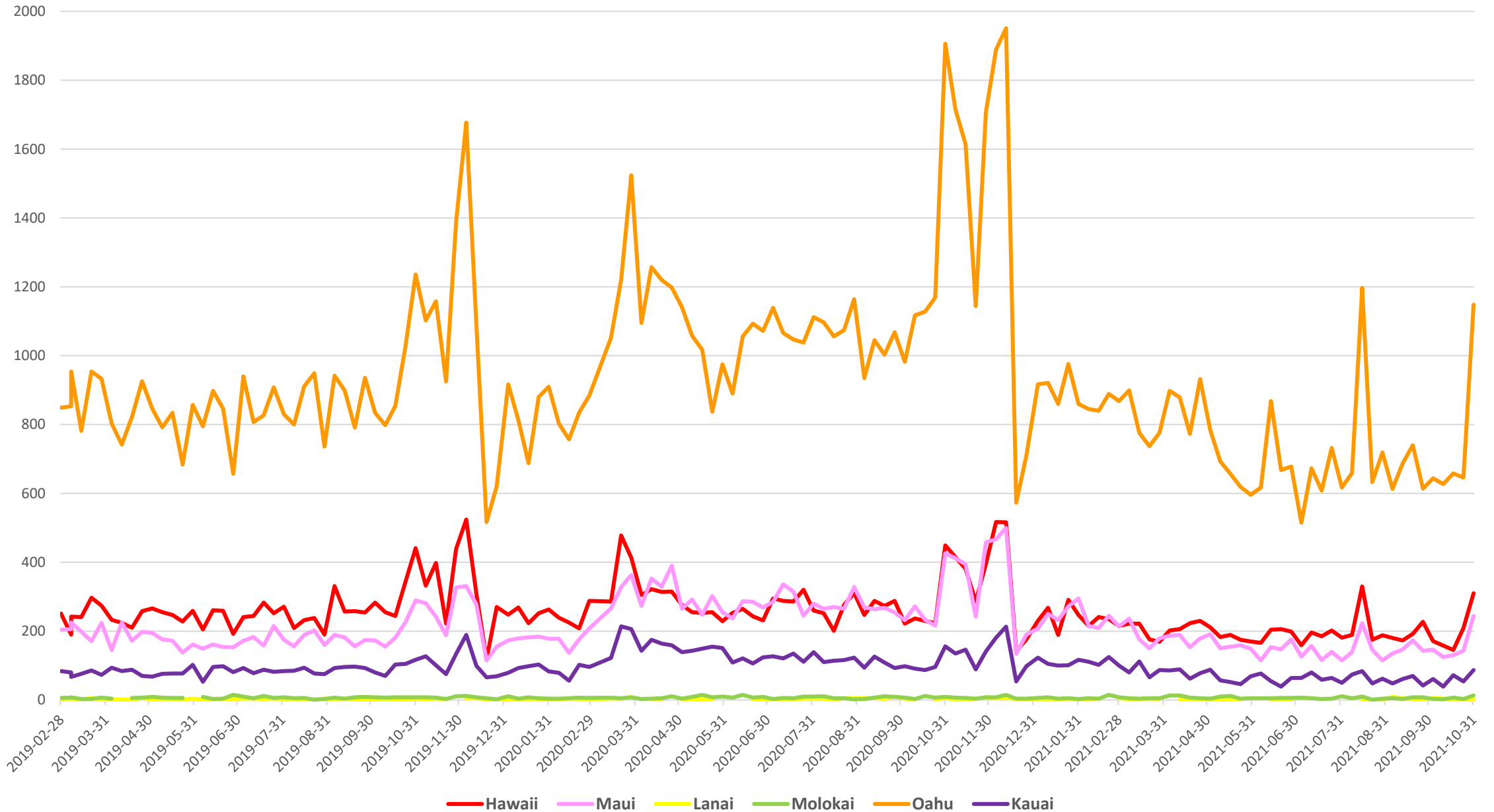
One-time increase due to processing backlog of applications from the Federal Marketplace.

Week Beginning Based on 2021 Date and Corresponding Weeks From Previous Years

2019 2020 2021

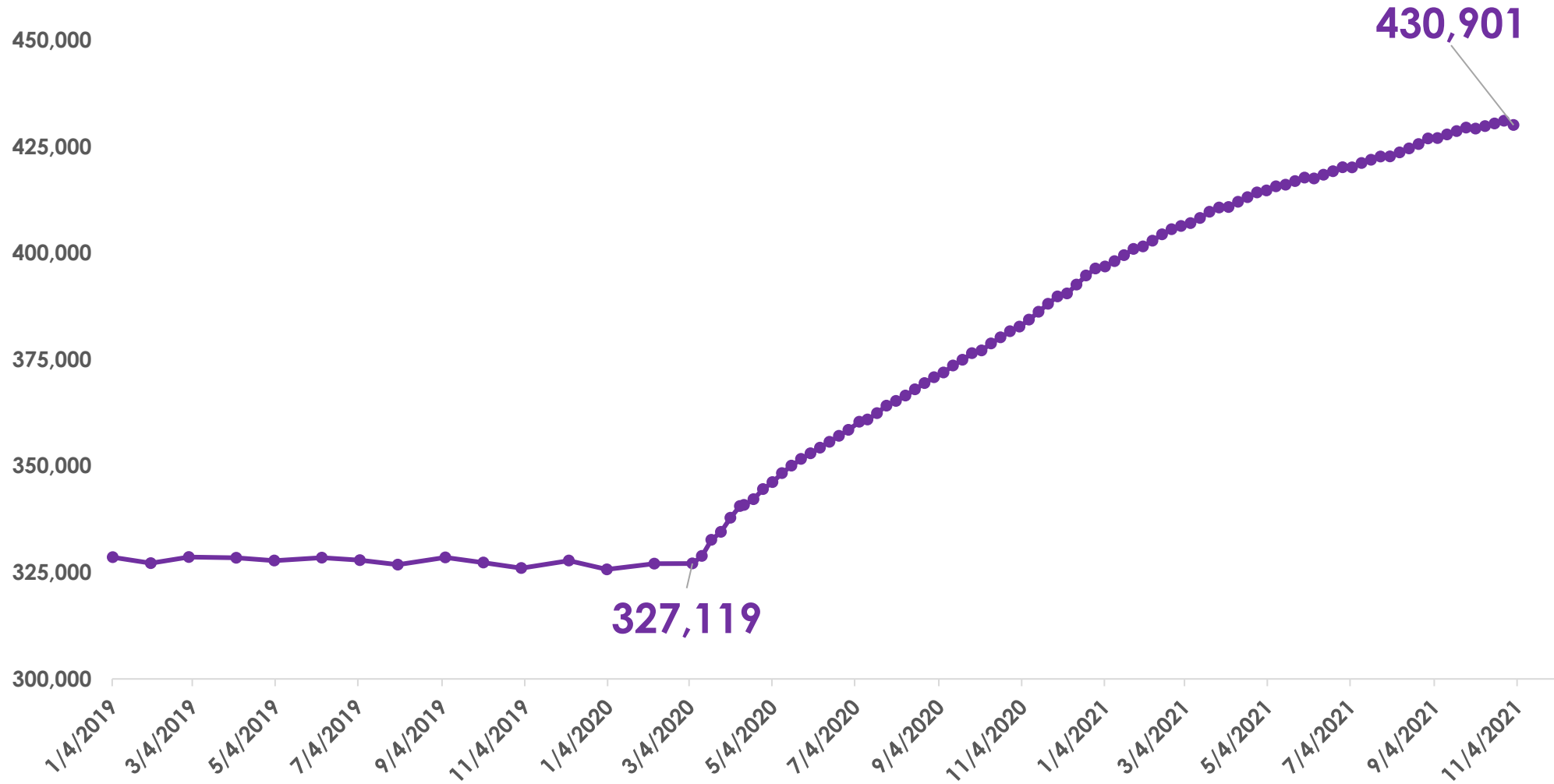
Application increase in Nov-Dec reflects additional application activity due to the Federal Marketplace open enrollment period.

# Applications by Island from March 2020 through present

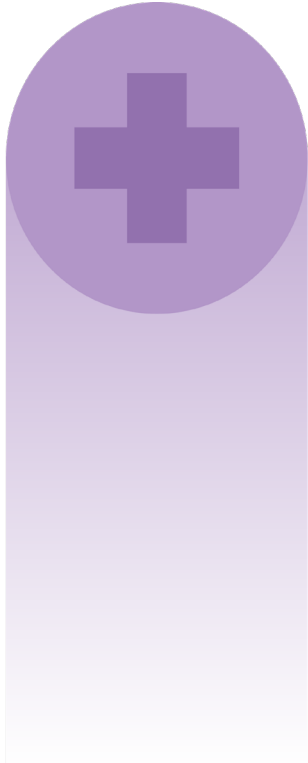


# Hawai'i Medicaid Monthly Enrollment: January 2019 to present

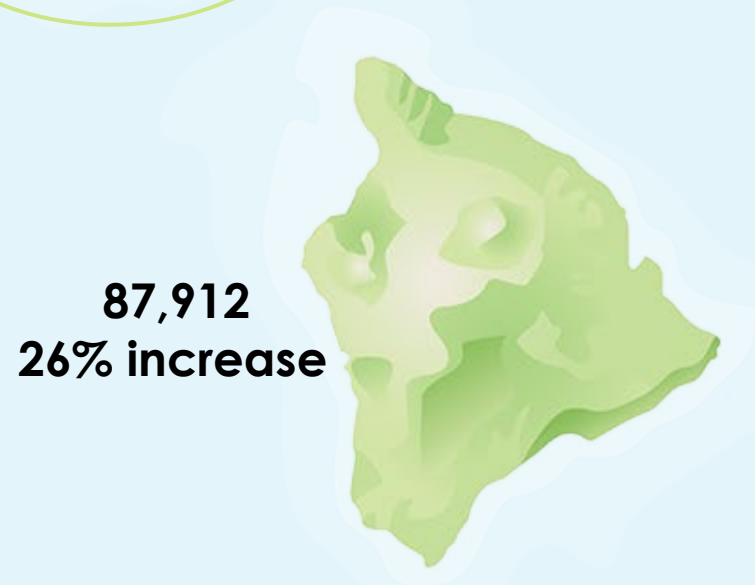
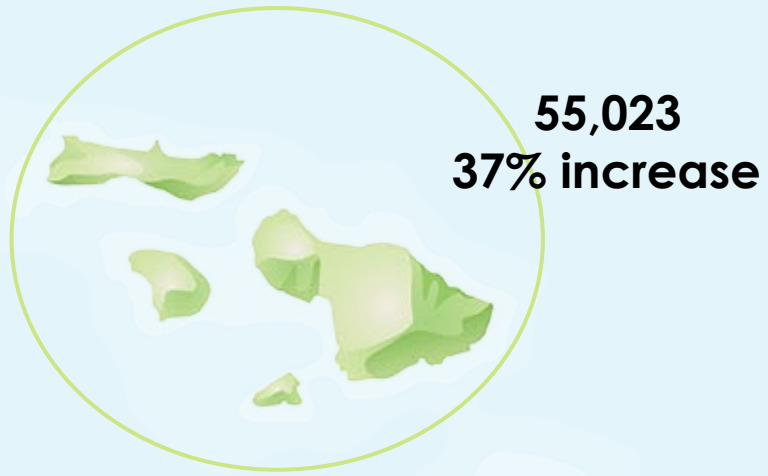
## 103,782 New Enrollments since 3/6/2020 (32% Increase)



—● Total Enrollment, Hawaii Medicaid (Jan 2019 - Present)



Current Medicaid enrollment by County and Percentage increase in enrollments since March 6, 2020



# March 6, 2020 – November 8, 2021:

Total Medicaid Applications Received:

**135,992**

Total New Medicaid Enrollments:

**103,782**

Percentage of Applications Eligible for Medicaid:

**76%**

## Terminations at the End of October 2021:

|                           |              |
|---------------------------|--------------|
| Voluntary Closure:        | 1,158        |
| Moved Out of State:       | 321          |
| <u>Deceased:</u>          | <u>290</u>   |
| <b>Total for October:</b> | <b>1,769</b> |

The Health and Human Services (HHS) declared COVID Public Health Emergency (PHE) was just extended effective 10/18/21 and will likely continue for 90 days at which time it may be extended again. During the PHE, CMS has directed Med-QUEST to continue to maintain all Medicaid enrollments except in the case of the three termination reasons detailed above. In exchange for maintaining all enrollments, CMS is providing an additional 6.2% in Federal matching dollars to support the cost of increased enrollment.