

SNAP Replacement Benefits

(Please note: This is different from P-EBT, Disaster-SNAP (D-SNAP) and SNAP Emergency Supplement.)

WHAT IS A "SNAP REPLACEMENT"?

A SNAP replacement is a replacement of food purchased with SNAP benefits that was destroyed in a household misfortune.

The amount of the replacement must be for the amount of the food loss not to exceed the amount of the monthly benefit issued to the household.

HOW CAN I APPLY FOR IT?

Please visit the Processing Center in your area or call the Public Assistance Information Line 1-855-643-1643.

WHO CAN APPLY FOR IT?

SNAP recipient households affected by the recent wildfires caused by Hurricane Dora on

Hawaii Island:

96743 - Kamuela

96755 - Kapaau

Maui:

96753 - Kihei, Wailea

96761 - Lahaina

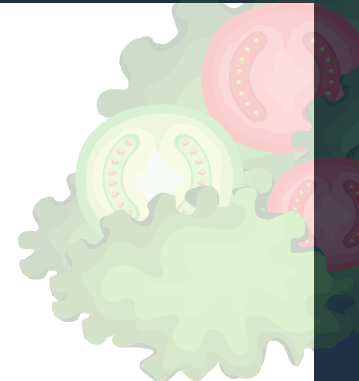
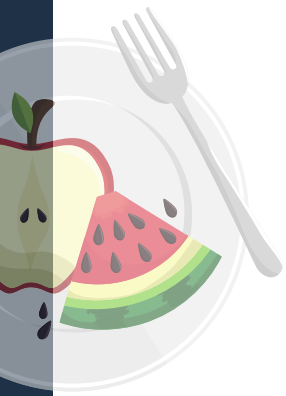
96768 - Makawao

96788 - Pukalani

96790 - Kula

WHAT DO I NEED TO PROVIDE & WHEN?

Submit a signed Application for Replacement of Food between August 14 thru September 15, 2023 to the State agency.



SNAP

Replacement Benefits

(Please note: This is different from P-EBT, Disaster-SNAP (D-SNAP) and SNAP Emergency Supplement.)

SNAP REPLACEMENT BENEFITS

Replacements will be authorized if reported between August 14 thru September 15, 2023.

The replacement will be for the amount of the loss, not to exceed the August 2023 monthly allotment for that household, after receipt of a signed affidavit that will be filed in the case record.

Once approved, replacement benefits are issued to current recipients using their existing EBT card.

Please visit the Processing Center in your area or call the

Public Assistance Information Line

1-855-643-1643.

Link to the Processing Centers information:

<https://humanservices.hawaii.gov/blog/processing-centers-and-first-to-work-units/>