

*A Statistical Report on*

**CHILD ABUSE AND NEGLECT  
IN HAWAII**

**CY 2022**

**Prepared by**

**State of Hawaii**

**Department of Human Services**

**Audit, Quality Control and Research Office**

## Table of Contents

<b>Introduction</b>	ii
<b>Glossary</b>	iii
<b>List of Tables</b>	
Intakes and Children Reported by Disposition, CY 2022	1
Number of Children Reported and Confirmed by County, CY 2018-2022	3
Number of Children Reported and Confirmed by District, CY 2018-2022	4
Percentage of Children Reported and Confirmed by District, CY 2018-2022	4.1
Number and Percentage of Reported and Confirmed Children by District, CY 2022	5
Number of Confirmed Child Victims by Age, CY 2018-2022	6
Number of Confirmed Child Victims by Gender, CY 2018-2022	6
Percentage of Confirmed Child Victims by Age, CY 2018-2022	6.1
Percentage of Confirmed Child Victims by Gender, CY 2018-2022	6.1
Number of Confirmed Child Victims by Ethnicity, CY 2018-2022	7
Number of Confirmed Child Victims by Severity of Harm, CY 2018-2022	7
Number and Percentage of Confirmed Child Victims (unique counts), CY 2022	8
Maltreatment Types (duplicated counts), CY 2022	9
Maltreatment Types (unique counts), CY 2022	10
Factors Precipitating the Incident for Confirmed Child Victims, CY 2022	11
Number of Children Reported and Confirmed by Report Source, CY 2018-2022	12
Recurrence of Maltreatment, CY 2022	14
Number of Perpetrators by Age, CY 2022	16
Number of Perpetrators by Gender, CY 2022	16
Number of Perpetrators by Relationship to Child Victim, CY 2018-2022	17
Number of Perpetrators by Age, CY 2018-2022	17
Number of Perpetrators by Gender, CY 2018-2022	17
<b>List of Figures</b>	
Fig. 1 Reported and Confirmed Child Victims with Confirmation Rates, CY 1986-2022	2
Fig. 2 Confirmed Child Victims by County, CY 2018-2022	3
Fig. 3 Reported Children by County, CY 2018-2022	3
Fig. 4 Sources of Reports for Confirmed Child Victims, CY 2022	13
Fig. 5 Sources of Reports for Children Reported and Confirmed, CY 2022	13
Fig. 6 Perpetrators by Age Group and Gender, 2022	15
Fig. 7 Relationship of Perpetrators to Confirmed Child Victims, CY 2022	15
<b>Military</b>	
Reported and Confirmed Child Victims by Military Branch and Rank, CY 2018-2022	18
Source of Report for Children Reported and Confirmed, CY 2018-2022	19
Number of Children Reported and Confirmed by Report Source, CY 2018-2022	20
Number of Confirmed Child Victims by Ethnicity and Severity of Harm, CY 2018-2022	21

## Introduction

This report was prepared by the Audit, Quality Control and Research Office of the State of Hawaii Department of Human Services. A copy of this report is also available on the Department's website at <http://humanservices.hawaii.gov/reports/child-abuse-and-neglect-reports/>.

The Hawaii Revised Statutes (HRS) Chapter 350 defines child abuse and neglect and assigns the Department of Human Service to receive and investigate reports of child abuse and neglect and to maintain a central registry of reported child abuse and neglect cases.

The CPSS database system serves as the Department's central registry. All data presented in this statistical report come from the CPSS.

The Department also participates in the National Child Abuse and Neglect Data System (NCANDS), a federally sponsored effort that collects data on child abuse and neglect known to child protective services agencies in the United States. The mandate for NCANDS is based on the 1988 amendments to the Child Abuse Prevention and Treatment Act (CAPTA) which directed the Secretary of the U.S. Department of Health and Human Services to create a national data collection and analysis program for state-level child abuse and neglect information. Data presented in this statistical report was produced in a manner consistent with NCANDS reporting. However, there is a difference in reporting periods. The reporting period for NCANDS is the federal fiscal year running from October through September. This report summarizes by calendar year.

In this report, data from 1999 and before were based on report date, data from 2000 and after are based on disposition date.

Report any problems or questions specifically regarding this statistical report to:

Ricky Higashide, Research Staff Supervisor  
Audit, Quality Control and Research Office (AQCRO)  
State of Hawaii - Dept. of Human Services  
P.O. Box 339  
Honolulu, Hawaii 96809-0339  
email: [rhigashide@dhs.hawaii.gov](mailto:rhigashide@dhs.hawaii.gov)

Any request for information on the Department's policy and procedures on child protection or for data not presented in this report should be submitted to the Director of the Department of Human Services.

## Glossary

<b>Child</b>	A person born alive and aged 0-17 years old
<b>Child abuse or neglect</b>	(HRS §350-1) The acts or omissions of any person who, or legal entity which, is in any manner or degree related to the child, is residing with the child, or is otherwise responsible for the child's care, that have resulted in the physical or psychological health or welfare of the child, who is under the age of eighteen, to be harmed, or to be subject to any reasonably foreseeable, substantial risk of being harmed.
<b>Child victim</b>	Victim of a report of child abuse or neglect where at least one maltreatment type was confirmed.
<b>Children reported</b>	Children identified in reports to the statewide Child Abuse Hotline as alleged victims of child abuse or neglect.
<b>Confirmed</b>	A determination made by the Department that evidence was sufficient under State law to conclude that maltreatment occurred.
<b>County</b>	The county in which the child was residing at the time of the report of maltreatment. Maui County includes Kalawao.
<b>Differential response</b>	CWS Intake Workers determine the possible presence of danger and the level of risk of abuse and/or neglect to a child who is the subject of a hotline report. Reports assessed with low risk and no safety issues identified are referred to Family Strengthening Services (FSS). Reports assessed with moderate risk and no safety issues identified are diverted to Voluntary Case Management (VCM). Reports assessed with severe/high risk and safety issues identified are assigned to a CWS unit for investigation. FSS and VCM cases are diverted to contracted community service providers for response.
<b>Disposition</b>	A determination made by the Department that evidence is or is not sufficient under State law to conclude that maltreatment occurred. A disposition is applied to each alleged maltreatment in a report and to the report itself.
<b>District</b>	A sub-county geographical area.
<b>Duplicate count</b>	A count where a person is counted for each response or occurrence in situations where a person may have more than one response recorded (e.g., factors precipitating the incident) and/or more than one occurrence (e.g., multiple intakes within the year).
<b>Ethnicity</b>	Individuals identify their own primary ethnic category, as well as up to four other ethnic categories to describe them. If a child is not able to self-identify, a parent or other family member identifies for them. Only primary ethnicities are reported here.
<b>Factors precipitating the incident</b>	Conditions that the CWS Intake Worker identified as contributing to the reported abuse or neglect of the child.
<b>HRS</b>	Hawaii Revised Statutes. Numbers after § refer to chapter and section number. Entire HRS available for viewing at <a href="https://www.capitol.hawaii.gov/hrsall/">https://www.capitol.hawaii.gov/hrsall/</a>
<b>Intakes</b>	Reports of child abuse or neglect incidents to Hawaii's statewide Child Abuse Hotline that have been accepted for CWS investigation. An intake usually refers to a family unit and may involve the possible maltreatment of more than one child.

## Glossary (continued)

<b>Maltreatment type</b>	A form of child maltreatment that initiated a child abuse or neglect report. Types include physical abuse, neglect, medical neglect, sexual abuse, psychological abuse, and threatened harm.
<b>Mandated reporter</b>	A person who is defined by law (HRS§350-1.1) that is required to report alleged incidents of child abuse and neglect.
<b>Military</b>	Intakes that involve a caregiver family member that is in the military. These intakes and children are included in the statewide reports.
<b>Not confirmed</b>	A determination made by the Department that evidence was insufficient under State law to conclude that maltreatment occurred.
<b>Perpetrator</b>	The person who has been determined to have caused or knowingly allowed the maltreatment of a child.
<b>Perpetrator relationship to child victim</b>	Primary role of the perpetrator to a child victim.
<b>Recurrence</b>	A situation where a child is confirmed as a child victim in one intake then confirmed again in a subsequent intake within six months of the first intake.
<b>Reported</b>	Refers to cases or children that were the subject of a call to Hawaii's statewide Child Abuse Hotline and were assigned to CWS for investigation. The reported children were alleged victims of abuse and/or neglect.
<b>Severity of harm</b>	Level of harm, ranging from no injury through fatal, resulting from the reported maltreatment.
<b>Source of initial report</b>	The category or role of the person who notifies the Department of alleged child maltreatment.
<b>Total reported</b>	Number that includes both confirmed and not confirmed intakes or children.
<b>Unique count</b>	A count where a person is counted only once regardless of the number of responses or occurrences.

## Intakes and Children by Disposition, CY 2022 by County

Intakes	Hawaii	Honolulu	Kauai	Maui	Total
Confirmed	225	361	56	96	738
Not Confirmed	399	1,382	180	203	2,164
Total Reported	624	1,743	236	299	2,902
Percent Confirmed out of Total Number Reported	36%	21%	24%	32%	25%

Children (duplicated count)	Hawaii	Honolulu	Kauai	Maui	Total
Confirmed	434	586	104	146	1,270
Not Confirmed	889	2,893	365	431	4,578
Total Reported	1,323	3,479	469	577	5,848
Percent Confirmed out of Total Number Reported	33%	17%	22%	25%	22%

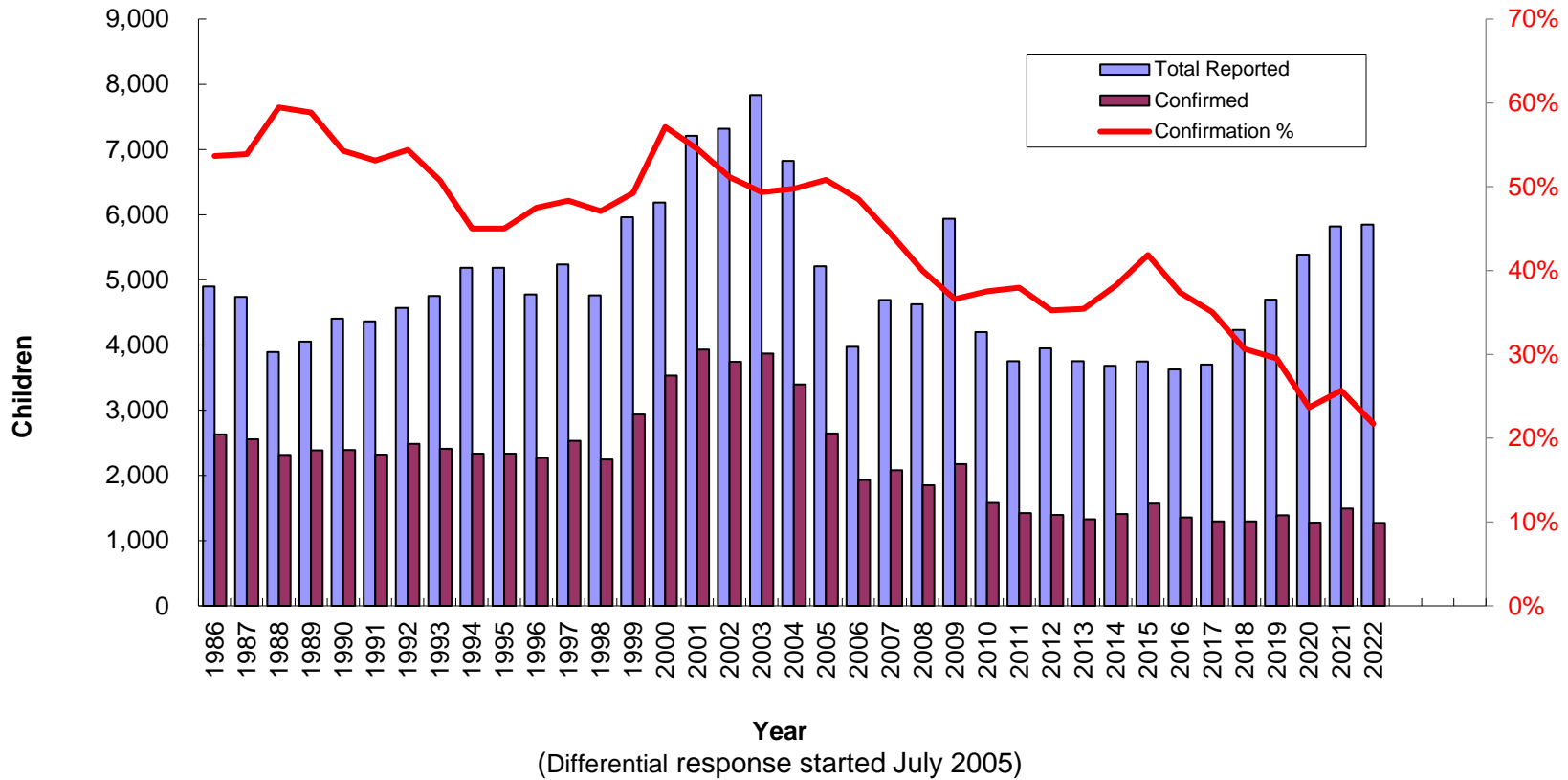
Children (unique count)	Hawaii	Honolulu	Kauai	Maui	Total
Confirmed	399	533	95	135	1,162
Not Confirmed	770	2,544	327	398	4,039
Total Reported	1,169	3,077	422	533	5,201
Percent Confirmed out of Total Number Reported	34%	17%	23%	25%	22%

**Intake:** Reports to Hawaii's statewide Child Abuse Hotline that CWS Intake staff accepted for CWS investigation. A report may include more than one alleged victim and therefore the count of children will be greater than the count of reports. A report's disposition is counted as confirmed if at least one child was confirmed as being maltreated.

**Duplicated count:** A child is counted each time that he/she was indicated to be a victim. A child may be found to be an alleged victim in more than one report during the year and therefore counted more than once during the reporting period. A child is counted as confirmed each time he/she is confirmed as a victim in a report.

**Unique count:** A child is counted only once during the reporting period, regardless of how many times the child was reported. A child is counted as confirmed only once regardless of how many times he/she was confirmed. A child is counted as not confirmed only if found not confirmed in all reports.

**Fig. 1 Reported and Confirmed Child Victims, CY 1986-2022**  
with Confirmation Rates

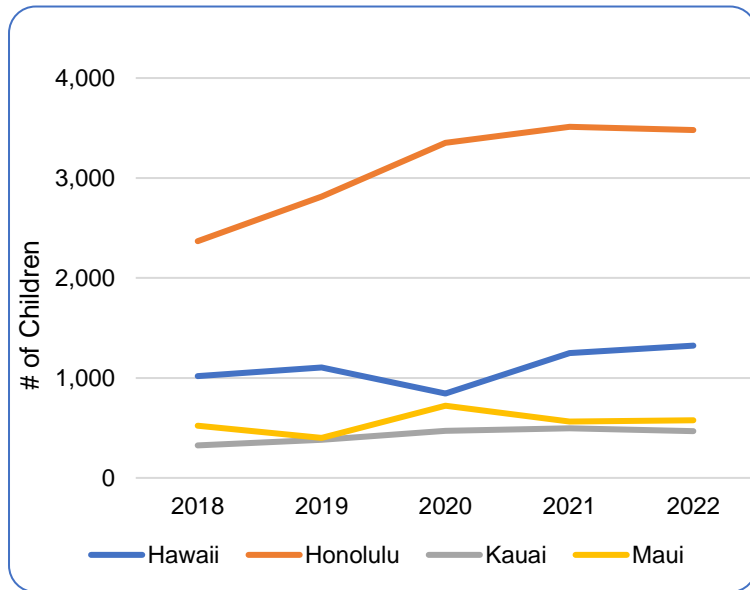


Note: Bars of total reported and confirmed child victims, line of confirmation percentage. The y-axis on the left is the number of children, the y-axis on the right is the confirmation rates, and the x-axis shows the CY.

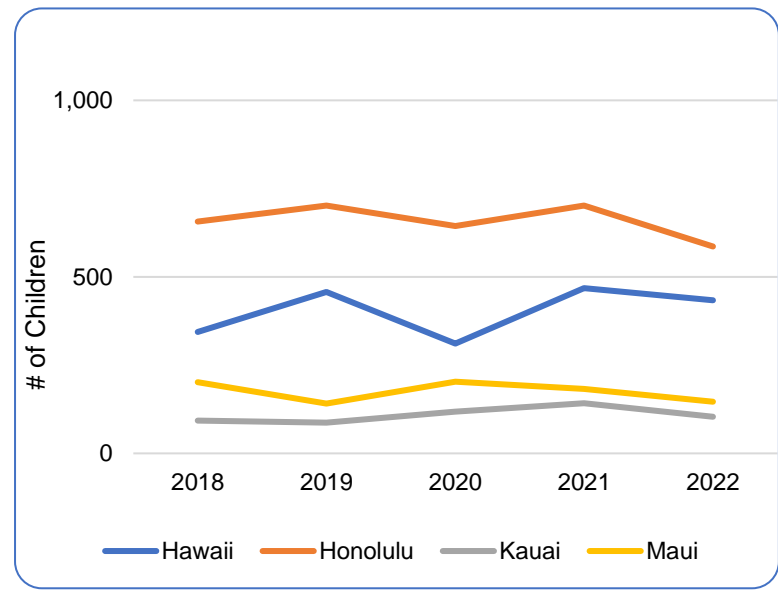
## Number of Children Reported and Confirmed by County, CY 2018-2022

Reported					
County	Children (duplicated count)				
	2018	2019	2020	2021	2022
Hawaii	1,017	1,104	844	1,250	1,323
Honolulu	2,368	2,813	3,351	3,512	3,479
Kauai	325	380	472	496	469
Maui	521	400	722	562	577
<b>Total</b>	<b>4,231</b>	<b>4,697</b>	<b>5,389</b>	<b>5,820</b>	<b>5,848</b>

Confirmed					
County	Children (duplicated count)				
	2018	2019	2020	2021	2022
Hawaii	344	457	311	468	434
Honolulu	657	702	644	702	586
Kauai	93	87	118	142	104
Maui	202	141	203	183	146
<b>Total</b>	<b>1,296</b>	<b>1,387</b>	<b>1,276</b>	<b>1,495</b>	<b>1,270</b>



**Fig. 2 Reported Children by County**



**Fig. 3 Confirmed Child Victims by County**



**Numbers of Children Reported and Confirmed by District, CY 2018-2022**  
**Duplicated Count by Disposition**

District	Reported					Confirmed				
	Children (duplicated count)					Children (duplicated count)				
	2018	2019	2020	2021	2022	2018	2019	2020	2021	2022
N. Hilo	0	4	2	8	0	0	3	2	5	0
S. Hilo	170	155	90	165	131	73	71	30	55	67
Puna	216	167	138	196	244	68	86	64	98	84
Kau	23	46	15	25	17	14	10	7	10	5
S. Kona	18	16	17	6	23	7	7	4	4	6
N. Kona	28	36	30	35	58	5	11	10	4	14
S. Kohala	24	10	19	23	26	11	1	2	13	12
N. Kohala	15	4	10	15	11	4	4	0	1	8
Hamakua	17	13	4	19	6	3	6	0	6	2
Unspecified	506	653	519	758	807	159	258	192	272	236
<b>Hawaii Total</b>	<b>1,017</b>	<b>1,104</b>	<b>844</b>	<b>1,250</b>	<b>1,323</b>	<b>344</b>	<b>457</b>	<b>311</b>	<b>468</b>	<b>434</b>
Honolulu	508	733	826	910	972	156	228	121	160	222
Ewa	701	721	909	1,016	1039	161	166	177	208	156
Wahiawa	174	189	234	275	261	44	49	49	49	26
Waianae	430	469	606	575	511	170	100	115	116	70
Waialua	30	35	32	46	54	5	3	2	9	5
Koolauloa	68	59	81	92	87	18	11	18	22	12
Koolaupoko	249	243	291	336	332	50	55	60	67	54
Unspecified	208	364	372	262	223	53	90	102	71	41
<b>Honolulu Total</b>	<b>2,368</b>	<b>2,813</b>	<b>3,351</b>	<b>3,512</b>	<b>3,479</b>	<b>657</b>	<b>702</b>	<b>644</b>	<b>702</b>	<b>586</b>
Lihue	39	87	108	107	125	7	23	22	43	45
Koloa	26	17	67	59	120	13	4	19	18	24
Waimea	27	49	64	81	70	9	10	15	33	14
Hanalei	3	23	50	39	40	0	4	12	8	3
Kawaihau	70	87	117	138	71	20	22	31	26	11
Unspecified	160	117	66	72	43	44	24	19	14	7
<b>Kauai Total</b>	<b>325</b>	<b>380</b>	<b>472</b>	<b>496</b>	<b>469</b>	<b>93</b>	<b>87</b>	<b>118</b>	<b>142</b>	<b>104</b>
Lahaina	25	26	34	48	33	12	13	18	23	13
Wailuku	160	97	172	136	109	68	28	50	41	23
Makawao	61	45	58	57	54	22	15	9	17	14
Hana	1	5	8	10	3	0	5	3	3	2
Molokai	19	8	42	7	53	10	0	13	7	9
Lanai	12	23	9	11	0	6	10	4	3	0
Unspecified	243	196	399	293	325	84	70	106	89	85
<b>Maui Total</b>	<b>521</b>	<b>400</b>	<b>722</b>	<b>562</b>	<b>577</b>	<b>202</b>	<b>141</b>	<b>203</b>	<b>183</b>	<b>146</b>
<b>State Total</b>	<b>4,231</b>	<b>4,697</b>	<b>5,389</b>	<b>5,820</b>	<b>5,848</b>	<b>1,296</b>	<b>1,387</b>	<b>1,276</b>	<b>1,495</b>	<b>1,270</b>

**Percentage of Confirmed Child Victims by District, CY 2018-2022**  
**Duplicated Count by Disposition**

District	Percentages of Confirmed Victims				
	2018	2019	2020	2021	2022
N. Hilo	0%	1%	1%	1%	0%
S. Hilo	21%	16%	10%	12%	15%
Puna	20%	19%	21%	21%	19%
Kau	4%	2%	2%	2%	1%
S. Kona	2%	2%	1%	1%	1%
N. Kona	1%	2%	3%	1%	3%
S. Kohala	3%	0%	1%	3%	3%
N. Kohala	1%	1%	0%	0%	2%
Hamakua	1%	1%	0%	1%	0%
Unspecified	46%	56%	62%	58%	54%
<b>Hawaii Total</b>	<b>100%</b>	<b>100%</b>	<b>100%</b>	<b>100%</b>	<b>100%</b>
Honolulu	24%	32%	19%	23%	38%
Ewa	25%	24%	27%	30%	27%
Wahiawa	7%	7%	8%	7%	4%
Waianae	26%	14%	18%	17%	12%
Waialua	1%	0%	0%	1%	1%
Koolauloa	3%	2%	3%	3%	2%
Koolaupoko	8%	8%	9%	10%	9%
Unspecified	8%	13%	16%	10%	7%
<b>Honolulu Total</b>	<b>100%</b>	<b>100%</b>	<b>100%</b>	<b>100%</b>	<b>100%</b>
Lihue	8%	26%	19%	30%	43%
Koloa	14%	5%	16%	13%	23%
Waimea	10%	11%	13%	23%	13%
Hanalei	0%	5%	10%	6%	3%
Kawaihau	22%	25%	26%	18%	11%
Unspecified	47%	28%	16%	10%	7%
<b>Kauai Total</b>	<b>100%</b>	<b>100%</b>	<b>100%</b>	<b>100%</b>	<b>100%</b>
Lahaina	6%	9%	9%	13%	9%
Wailuku	34%	20%	25%	22%	16%
Makawao	11%	11%	4%	9%	10%
Hana	0%	4%	1%	2%	1%
Molokai	5%	0%	6%	4%	6%
Lanai	3%	7%	2%	2%	0%
Unspecified	42%	50%	52%	49%	58%
<b>Maui Total</b>	<b>100%</b>	<b>100%</b>	<b>100%</b>	<b>100%</b>	<b>100%</b>

Note: Percentage out of the total number of confirmed child victims of the county, not confirmation rates. Number of confirmed victims of the district divided by the total number of confirmed victims for the county.

**Number and Percentage of Reported and Confirmed Children by District, CY 2022**  
**Unique Count by Disposition**

District	Reported		Confirmed	
	Number	Percentage*	Number	Percentage*
N. Hilo	0	0.0%	0	0.0%
S. Hilo	113	9.7%	58	14.5%
Puna	203	17.4%	73	18.3%
Kau	15	1.3%	5	1.3%
S. Kona	22	1.9%	6	1.5%
N. Kona	52	4.4%	12	3.0%
S. Kohala	24	2.1%	12	3.0%
N. Kohala	8	0.7%	7	1.8%
Hamakua	5	0.4%	2	0.5%
Unspecified	727	62.2%	224	56.1%
<b>Hawaii Total</b>	<b>1,169</b>	<b>100%</b>	<b>399</b>	<b>100%</b>
Honolulu	873	28.4%	191	35.8%
Ewa	934	30.4%	152	28.5%
Wahiawa	223	7.2%	26	4.9%
Waianae	451	14.7%	66	12.4%
Waialua	50	1.6%	5	0.9%
Koolauloa	60	1.9%	9	1.7%
Koolaupoko	279	9.1%	48	9.0%
Unspecified	207	6.7%	36	6.8%
<b>Honolulu Total</b>	<b>3,077</b>	<b>100%</b>	<b>533</b>	<b>100%</b>
Lihue	112	26.5%	36	37.9%
Koloa	109	25.8%	24	25.3%
Waimea	64	15.2%	14	14.7%
Hanalei	34	8.1%	3	3.2%
Kawaihau	65	15.4%	11	11.6%
Unspecified	38	9.0%	7	7.4%
<b>Kauai Total</b>	<b>422</b>	<b>100%</b>	<b>95</b>	<b>100%</b>
Lahaina	33	6.2%	13	9.6%
Wailuku	101	18.9%	23	17.0%
Makawao	49	9.2%	12	8.9%
Hana	3	0.6%	2	1.5%
Molokai	41	7.7%	8	5.9%
Lanai	0	0.0%	0	0.0%
Unspecified	306	57.4%	77	57.0%
<b>Maui Total</b>	<b>533</b>	<b>100%</b>	<b>135</b>	<b>100%</b>
<b>State Total</b>	<b>5,201</b>		<b>1,162</b>	

\*Percent of the district child victims out of the county total.

### Number of Confirmed Child Victims by Age, CY 2018-2022

Age	Children (duplicated count)				
	2018	2019	2020	2021	2022
Less Than One Year	222	217	191	235	187
1 Year	82	88	69	86	67
2 Years	74	64	69	68	54
3 Years	72	82	64	82	81
4 Years	83	79	75	82	70
5 Years	64	78	74	74	58
6 Years	76	79	67	90	65
7 Years	60	61	63	84	59
8 Years	59	69	60	72	65
9 Years	69	59	76	70	65
10 Years	66	76	62	78	54
11 Years	54	70	66	76	63
12 Years	64	65	69	68	63
13 Years	54	64	67	81	61
14 Years	57	67	70	65	85
15 Years	45	71	50	65	64
16 Years	54	62	40	71	51
17 Years	38	34	43	48	55
Unknown/Missing	3	2	1	0	3
<b>Total</b>	<b>1,296</b>	<b>1,387</b>	<b>1,276</b>	<b>1,495</b>	<b>1,270</b>
<b>Median age</b>	<b>6</b>	<b>7</b>	<b>7</b>	<b>7</b>	<b>7</b>

### Number of Confirmed Child Victims by Gender, CY 2018-2022

Gender	Children (duplicated count)				
	2018	2019	2020	2021	2022
Male	637	629	603	682	589
Female	639	736	663	792	667
Unknown/Missing	20	22	10	21	14
<b>Total</b>	<b>1,296</b>	<b>1,387</b>	<b>1,276</b>	<b>1,495</b>	<b>1,270</b>

**Duplicated count:** a child is counted each time that he/she was found to be a victim. A child may be counted more than once during the reporting period.

### Percentage of Confirmed Child Victims by Age, CY 2018-2022

Age	Percentage of children (duplicated count)				
	2018	2019	2020	2021	2022
Less Than One Year	17.1%	15.6%	15.0%	15.7%	14.7%
1 Year	6.3%	6.3%	5.4%	5.8%	5.3%
2 Years	5.7%	4.6%	5.4%	4.5%	4.3%
3 Years	5.6%	5.9%	5.0%	5.5%	6.4%
4 Years	6.4%	5.7%	5.9%	5.5%	5.5%
5 Years	4.9%	5.6%	5.8%	4.9%	4.6%
6 Years	5.9%	5.7%	5.3%	6.0%	5.1%
7 Years	4.6%	4.4%	4.9%	5.6%	4.6%
8 Years	4.6%	5.0%	4.7%	4.8%	5.1%
9 Years	5.3%	4.3%	6.0%	4.7%	5.1%
10 Years	5.1%	5.5%	4.9%	5.2%	4.3%
11 Years	4.2%	5.0%	5.2%	5.1%	5.0%
12 Years	4.9%	4.7%	5.4%	4.5%	5.0%
13 Years	4.2%	4.6%	5.3%	5.4%	4.8%
14 Years	4.4%	4.8%	5.5%	4.3%	6.7%
15 Years	3.5%	5.1%	3.9%	4.3%	5.0%
16 Years	4.2%	4.5%	3.1%	4.7%	4.0%
17 Years	2.9%	2.5%	3.4%	3.2%	4.3%
Unknown/Missing	0.2%	0.1%	0.1%	0.0%	0.2%
<b>Total</b>	<b>100%</b>	<b>100%</b>	<b>100%</b>	<b>100%</b>	<b>100%</b>

### Percentage of Confirmed Child Victims by Gender, CY 2018-2022

Gender	Percentage of children (duplicated count)				
	2018	2019	2020	2021	2022
Male	49.2%	45.3%	47.3%	45.6%	46.4%
Female	49.3%	53.1%	52.0%	53.0%	52.5%
Unknown/Missing	1.5%	1.6%	0.8%	1.4%	1.1%
<b>Total</b>	<b>100%</b>	<b>100%</b>	<b>100%</b>	<b>100%</b>	<b>100%</b>

**Duplicated count:** a child is counted each time that he/she was found to be a victim. A child may be counted more than once during the reporting period.

## Number of Confirmed Child Victims by Ethnicity, CY 2018-2022

Ethnicity*	Children (duplicated count)				
	2018	2019	2020	2021	2022
Alaskan Native	1	3	1	1	1
American Indian	7	23	10	8	5
Black	34	24	41	30	28
Cambodian	1	3	2	2	1
Chinese	17	26	26	31	11
Filipino	103	96	98	110	69
Guamanian	0	5	0	3	6
Hawaiian/Part Hawaiian	524	560	488	592	490
Hispanic/Spanish	53	47	45	45	33
Japanese	18	23	22	19	30
Korean	7	5	5	2	5
Laotian	3	1	0	0	1
Marshallese	11	20	7	12	14
Micronesia	27	37	36	96	53
Mixed	146	131	105	113	109
Other Pacific Islander	13	12	11	5	8
Palauan	0	1	0	0	1
Samoan	66	54	43	38	33
Tongan	2	6	4	6	6
Unable to Determine	16	55	80	45	66
Unknown/Missing	9	9	4	9	24
Vietnamese	4	2	2	0	1
White	234	244	246	328	275
<b>Total</b>	<b>1,296</b>	<b>1,387</b>	<b>1,276</b>	<b>1,495</b>	<b>1,270</b>

\*Primary ethnicity

## Number of Confirmed Child Victims by Severity of Harm, CY 2018-2022

Severity of Harm	Children (duplicated count)				
	2018	2019	2020	2021	2022
Fatal	4	1	2	1	3
Permanent Disability	0	3	1	0	1
Serious	36	30	43	58	25
Treatment Required	110	107	74	91	76
No Treatment Necessary	729	775	626	627	461
No Injury	417	471	530	718	704
<b>Total</b>	<b>1,296</b>	<b>1,387</b>	<b>1,276</b>	<b>1,495</b>	<b>1,270</b>

## Number and Percentage of Confirmed Child Victims, CY 2022

### Unique Count by Ethnicity, Age, Gender and Severity of Harm

Ethnicity	Children (unique count)	
	Number	Percentage
American Indian	5	0.4%
Alaskan Native	1	0.1%
Black	28	2.4%
Cambodian	1	0.1%
Chinese	11	0.9%
Micronesia	47	4.0%
Filipino	68	5.9%
Guamanian	6	0.5%
Hawaiian/Part Hawaiian	441	38.0%
Hispanic/Spanish	28	2.4%
Japanese	26	2.2%
Korean	5	0.4%
Laotian	1	0.1%
Mixed	98	8.4%
Marshallese	14	1.2%
Other Pacific Islander	8	0.7%
Palauan	1	0.1%
Samoaan	30	2.6%
Tongan	6	0.5%
Unable to determine	61	5.2%
Unknown/Missing	24	2.1%
Vietnamese	1	0.1%
White	251	21.6%
<b>Total</b>	<b>1,162</b>	<b>100%</b>

Age	Children (unique count)	
	Number	Percentage
Less Than One Year	174	15.0%
1 Year	65	5.6%
2 Years	51	4.4%
3 Years	73	6.3%
4 Years	65	5.6%
5 Years	53	4.6%
6 Years	59	5.1%
7 Years	50	4.3%
8 Years	60	5.2%
9 Years	61	5.2%
10 Years	48	4.1%
11 Years	54	4.6%
12 Years	57	4.9%
13 Years	58	5.0%
14 Years	75	6.5%
15 Years	59	5.1%
16 Years	47	4.0%
17 Years	50	4.3%
Unknown/Missing	3	0.3%
<b>Total</b>	<b>1,162</b>	<b>100%</b>

Gender	Children (unique count)	
	Number	Percentage
Male	535	46.0%
Female	614	52.8%
Unknown/Missing	13	1.1%
<b>Total</b>	<b>1,162</b>	<b>100%</b>

Severity of Harm	Children (unique count)	
	Number	Percentage
Fatal	3	0.3%
Permanent Disability	1	0.1%
Serious	25	2.2%
Treatment Required	74	6.4%
No Treatment Necessary	412	35.5%
No Injury	647	55.7%
<b>Total</b>	<b>1,162</b>	<b>100%</b>

**Children (unique count):** A child is only counted once, regardless of how many times they were reported. For a child with more than one confirmed report of abuse, the highest severity level is listed.

**Reported, Confirmed, and Confirmation Rate of Maltreatment Types  
by County, CY 2022**

Maltreatment Types	Reported (duplicated count)				
	Hawaii	Honolulu	Kauai	Maui	Total
Physical Abuse	153	405	37	81	676
Neglect	260	621	86	122	1,089
Medical Neglect	23	69	12	5	109
Sexual Abuse	67	177	23	26	293
Psychological Abuse	12	56	6	6	80
Sex Trafficking	6	9	1	8	24
Threatened Harm	1,235	3,224	440	537	5,436
<b>Total</b>	<b>1,756</b>	<b>4,561</b>	<b>605</b>	<b>785</b>	<b>7,707</b>

Maltreatment Types	Confirmed (duplicated count)				
	Hawaii	Honolulu	Kauai	Maui	Total
Physical Abuse	27	30	5	15	77
Neglect	82	86	5	19	192
Medical Neglect	4	6	3	1	14
Sexual Abuse	15	55	4	8	82
Psychological Abuse	3	4	1	2	10
Sex Trafficking	1	2	0	5	8
Threatened Harm	418	513	99	130	1,160
<b>Total</b>	<b>550</b>	<b>696</b>	<b>117</b>	<b>180</b>	<b>1,543</b>

Maltreatment Types	Confirmation Rate (duplicated count)				
	Hawaii	Honolulu	Kauai	Maui	Total
Physical Abuse	18%	7%	14%	19%	11%
Neglect	32%	14%	6%	16%	18%
Medical Neglect	17%	9%	25%	20%	13%
Sexual Abuse	22%	31%	17%	31%	28%
Psychological Abuse	25%	7%	17%	33%	13%
Sex Trafficking	17%	22%	0%	63%	33%
Threatened Harm	34%	16%	23%	24%	21%
<b>Total</b>	<b>31%</b>	<b>15%</b>	<b>19%</b>	<b>23%</b>	<b>20%</b>

**Maltreatment type (duplicated count):** A child may have more than one type of maltreatment per report and may have more than one report in the reporting period. Each maltreatment type for each report is counted here.



**Reported, Confirmed, and Confirmation Rate of Unique Maltreatment Types  
by County, CY 2022**

Maltreatment Types	Reported (unique count)				
	Hawaii	Honolulu	Kauai	Maui	Total
Physical Abuse	142	382	36	77	637
Neglect	248	606	82	121	1,057
Medical Neglect	23	69	11	5	108
Sexual Abuse	67	166	23	25	281
Psychological Abuse	12	56	6	6	80
Sex Trafficking	6	9	1	8	24
Threatened Harm	1,103	2,867	399	500	4,869
<b>Total</b>	<b>1,601</b>	<b>4,155</b>	<b>558</b>	<b>742</b>	<b>7,056</b>

Maltreatment Types	Confirmed (unique count)				
	Hawaii	Honolulu	Kauai	Maui	Total
Physical Abuse	27	30	5	15	77
Neglect	82	84	5	18	189
Medical Neglect	4	6	3	1	14
Sexual Abuse	15	53	4	8	80
Psychological Abuse	3	4	1	2	10
Sex Trafficking	1	2	0	5	8
Threatened Harm	386	466	90	123	1,065
<b>Total</b>	<b>518</b>	<b>645</b>	<b>108</b>	<b>172</b>	<b>1,443</b>

Maltreatment Types	Confirmation Rate (unique count)				
	Hawaii	Honolulu	Kauai	Maui	Total
Physical Abuse	19%	8%	14%	19%	12%
Neglect	33%	14%	6%	15%	18%
Medical Neglect	17%	9%	27%	20%	13%
Sexual Abuse	22%	32%	17%	32%	28%
Psychological Abuse	25%	7%	17%	33%	13%
Sex Trafficking	17%	22%	0%	63%	33%
Threatened Harm	35%	16%	23%	25%	22%
<b>Total</b>	<b>32%</b>	<b>16%</b>	<b>19%</b>	<b>23%</b>	<b>20%</b>

**Maltreatment type (unique count):** A child may have more than one maltreatment type per report and may have been reported more than once during the reporting period, but the same maltreatment is counted only once here.

## Factors Precipitating the Incident for Confirmed Child Victims, CY 2022

Factors Precipitating the Incident*	Child Victims	Percentage
Alcohol Abuse	201	15.8%
Broken Family	77	6.1%
Chronic Family Violence	237	18.7%
Drug Abuse	494	38.9%
Family Discord	112	8.8%
Heavy Continuous Child Care Responsibility	132	10.4%
Inability to Cope with Parenting Responsibility	937	73.8%
Inadequate Housing	65	5.1%
Incapacity due to Handicap/Chronic Illness	8	0.6%
Insufficient Income/Misuse of Income	13	1.0%
Lack of Tolerance to Child's Behavior	125	9.8%
Loss of Control During Discipline	98	7.7%
Mental Health Problem	204	16.1%
Mental Retardation	2	0.2%
New Baby in Home/Pregnancy	48	3.8%
Normal Authoritarian Discipline	2	0.2%
Parental History of Abuse as a Child	27	2.1%
Physical Abuse of Spouse/Fighting	260	20.5%
Police/Court Record (Excluding Traffic)	61	4.8%
Recent Relocation	5	0.4%
Social Isolation	2	0.2%
Unacceptable Child Rearing Method	872	68.7%
Missing	105	8.3%
<b>Total confirmed child victims (duplicate count)</b>	<b>1,270</b>	<b>N/A</b>

\***Factors Precipitating the Incident** are conditions the CWS worker identifies that contributed to the abuse or neglect of the child. The worker marks up to five relevant factors per child per incident, therefore the total count of factors exceeds the total number of child victims. The percentages in this table are based on the total number of child victims (duplicated count, due to some children experiencing more than one incident of maltreatment during the year) and not the total number of factors.”

## Number of Children Reported and Confirmed by Report Source, CY 2018-2022

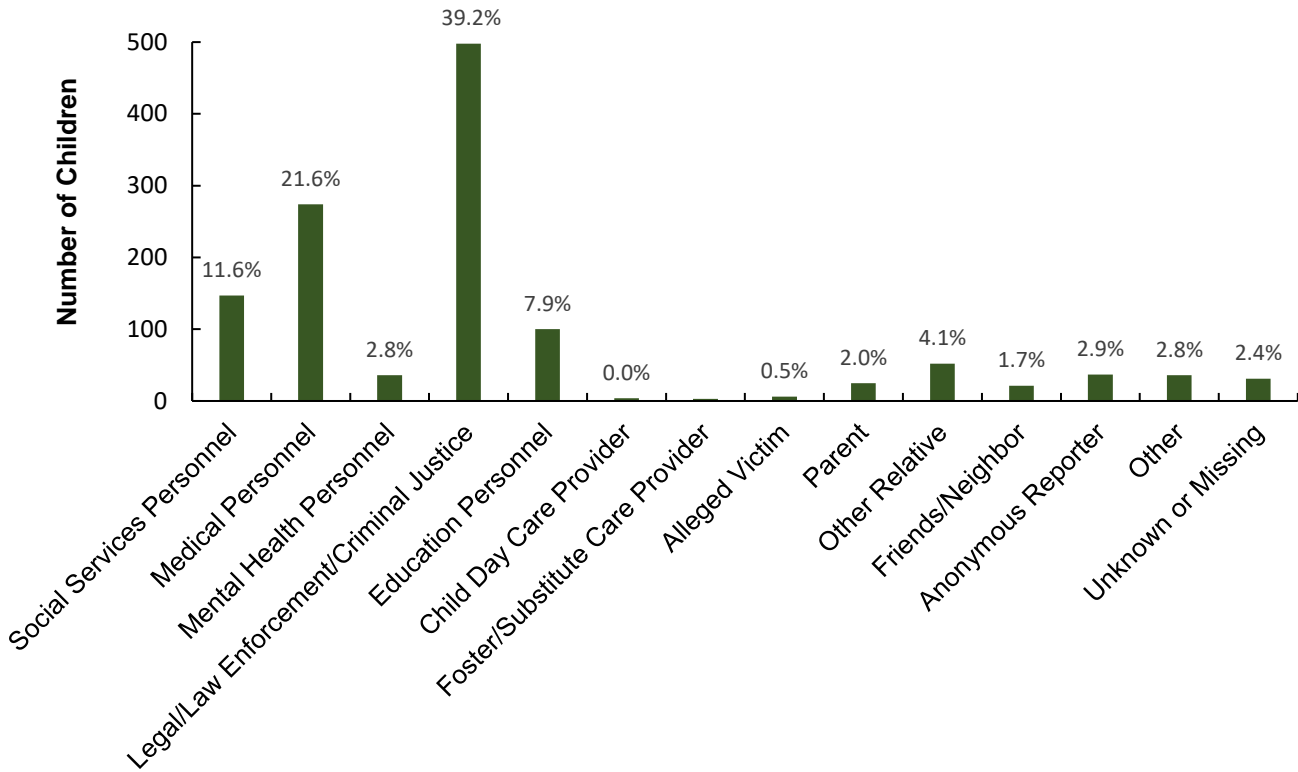
Mandated Reporters*	Reported					Confirmed				
	Children (duplicated count)					Children (duplicated count)				
	2018	2019	2020	2021	2022	2018	2019	2020	2021	2022
Social Services Personnel	681	749	830	895	941	180	199	149	178	147
Medical Personnel	761	868	1,018	963	947	307	320	276	273	274
Mental Health Personnel	140	115	152	208	216	31	32	33	36	36
Legal, Law Enforcement, or Criminal Justice Personnel	944	898	1,138	1,241	1526	352	315	388	459	498
Education Personnel	600	726	479	531	894	135	197	91	104	100
Child Day Care Provider	9	4	14	21	16	0	0	1	0	4
Foster/Substitute Care Provider	9	0	7	7	5	5	0	2	3	3
<b>Total Mandatory Reporters</b>	<b>3,144</b>	<b>3,360</b>	<b>3,638</b>	<b>3,866</b>	<b>4,545</b>	<b>1,010</b>	<b>1,063</b>	<b>940</b>	<b>1,053</b>	<b>1,062</b>

Other Reporters	Reported					Confirmed				
	Children (duplicated count)					Children (duplicated count)				
	2018	2019	2020	2021	2022	2018	2019	2020	2021	2022
Alleged Victim	14	112	8	20	24	1	27	1	6	6
Parent	104	117	194	234	229	23	36	30	47	25
Other Relative	233	243	402	430	299	68	87	123	114	52
Friends/Neighbor	76	69	217	146	196	14	11	24	25	21
Anonymous	135	135	149	195	263	33	19	21	27	37
Other	102	134	163	213	176	33	32	23	29	36
Unknown/Missing	423	527	618	716	116	114	112	114	194	31
<b>Total Other Reporters</b>	<b>1,087</b>	<b>1,337</b>	<b>1,751</b>	<b>1,954</b>	<b>1,303</b>	<b>286</b>	<b>324</b>	<b>336</b>	<b>442</b>	<b>208</b>

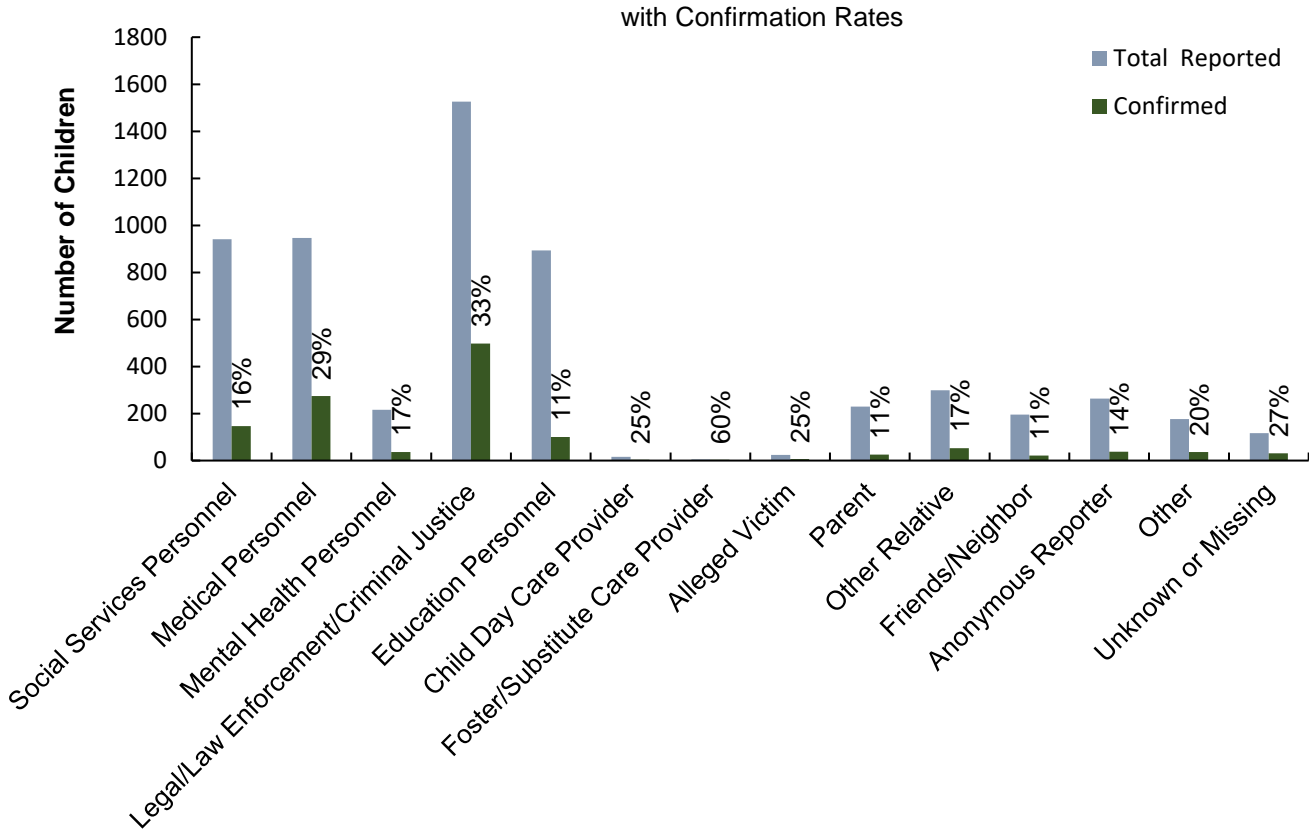
<b>All Reporters</b>	<b>3,702</b>	<b>4,697</b>	<b>5,389</b>	<b>5,820</b>	<b>5,848</b>	<b>1,297</b>	<b>1,387</b>	<b>1,276</b>	<b>1,495</b>	<b>1,270</b>
----------------------	--------------	--------------	--------------	--------------	--------------	--------------	--------------	--------------	--------------	--------------

\*Mandated Reporter: A person who is defined by law (HRS§350-1.1) that is required to report alleged incidents of child abuse and neglect.

**Fig. 4 Sources of Report for Confirmed Child Victims, CY 2022**  
with Percent of Total



**Fig. 5 Sources of Report for Children Reported and Confirmed, CY 2022**  
with Confirmation Rates



## Recurrence of Maltreatment, CY 2022

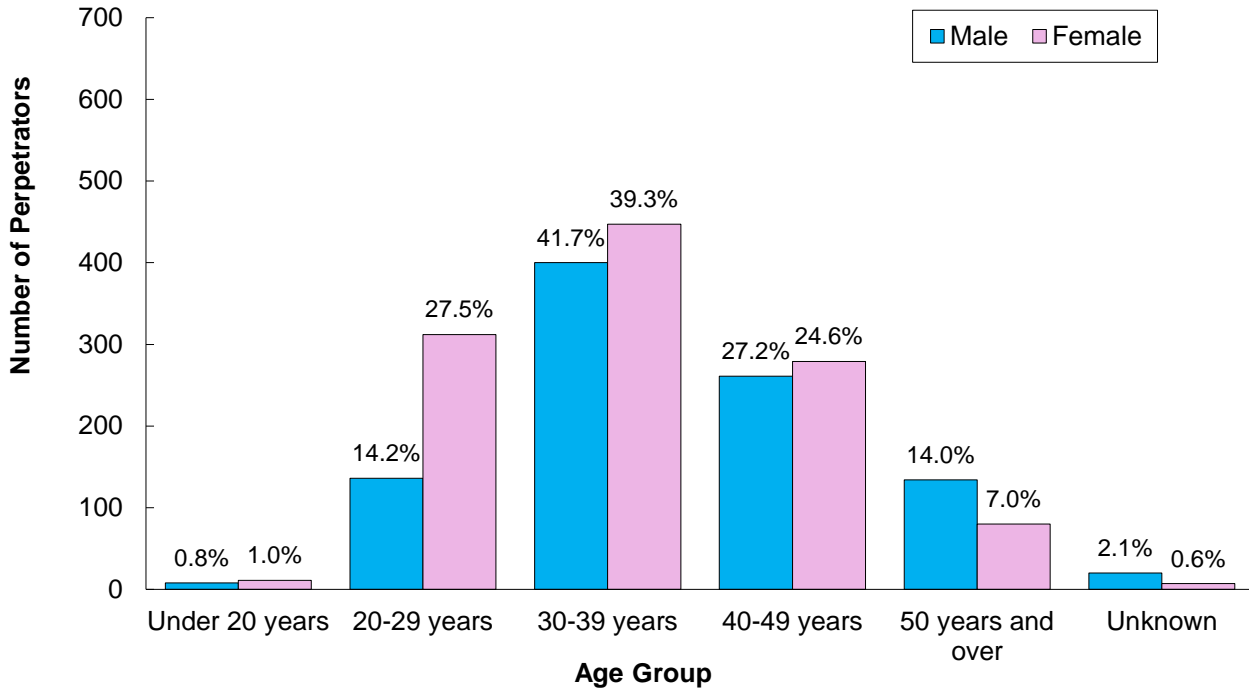
	Child Victims	Percentage
No Recurrence	588	92.5%
Recurrence	48	7.5%
<b>Total</b>	<b>636</b>	<b>100%</b>

Only confirmed child victims, whose both report year and disposition year were in Calendar Year [2022](#) and the initial maltreatment report dates fell between January-June, [2022](#), were included in the recurrence rate calculation.

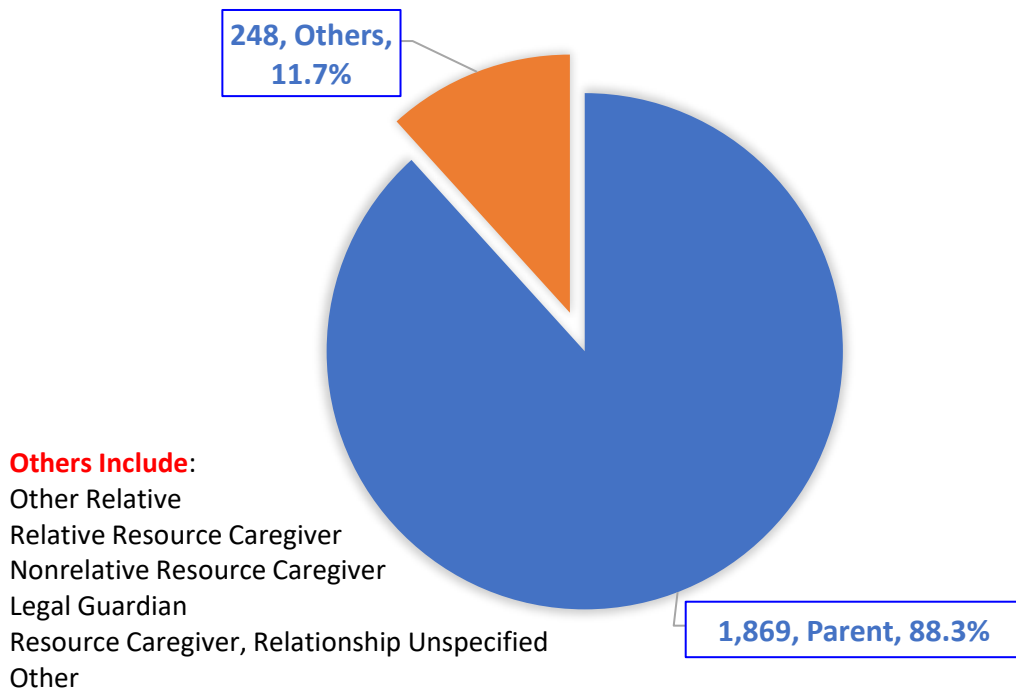
**No Recurrence:** Maltreatment occurred between January and June. There was no recurrence within six months.

**Recurrence:** First maltreatment occurred between January and June. The second maltreatment occurred within six months.

**Fig. 6 Perpetrators by Age Group and Gender, CY 2022**  
(with Percent of Gender Total)



**Fig. 7 Relationship of Perpetrators to Confirmed Child Victims CY 2022**



### Number and Percentage of Perpetrators by Age, CY 2022

Age	Perpetrators (unique count)*	
	Perpetrators	Percentage
Under 20 years	15	1.3%
20-29 years	251	22.6%
30-39 years	437	39.3%
40-49 years	263	23.6%
50 years and over	119	10.7%
Unknown	28	2.5%
<b>Total</b>	<b>1,113</b>	<b>100%</b>

### Number and Percentage of Perpetrators by Gender, CY 2022

Gender	Perpetrators (unique count)	
	Perpetrators	Percentage
Male	497	44.7%
Female	600	53.9%
Unknown/Missing	16	1.4%
<b>Total</b>	<b>1,113</b>	<b>100%</b>

\***Perpetrator** was counted only once regardless of how many times he/she was associated with a child victim.

### Number of Perpetrators by Relationship to Child Victim, CY 2018 - 2022

Perpetrator Relationship to Victim	Perpetrators (duplicated count)*				
	2018	2019	2020	2021	2022
Parent	1,825	1,986	1,904	2,265	1,869
Other Relative	33	41	39	36	63
Relative Foster Parent	5	13	6	0	6
Nonrelative Foster Parent	4	15	9	9	8
Group Home/Residential Facility Staff	2	2	0	0	0
Legal Guardian	15	34	14	51	52
Other Professionals	4	0	0	0	0
Foster Parent, Relationship Unspecified	0	0	2	2	4
Other	149	112	124	133	110
Unknown/Missing	16	16	12	27	5
<b>Total</b>	<b>2,053</b>	<b>2,219</b>	<b>2,110</b>	<b>2,523</b>	<b>2,117</b>

### Number of Perpetrators by Age, CY 2018 - 2022

Perpetrator Age	perpetrators (duplicated count)				
	2018	2019	2020	2021	2022
Under 20 Years	30	27	21	23	19
20 - 29 Years	541	526	483	524	450
30 - 39 Years	934	981	1,006	1,165	853
40 - 49 Years	357	427	398	561	544
50 Years or Older	153	209	163	188	214
Unknown/Missing	38	49	39	62	37
<b>Total</b>	<b>2,053</b>	<b>2,219</b>	<b>2,110</b>	<b>2,523</b>	<b>2,117</b>

### Number of Perpetrators by Gender, CY 2018 - 2022

Perpetrator Gender	perpetrators (duplicated count)				
	2018	2019	2020	2021	2022
Male	877	955	962	1,103	959
Female	1,154	1,224	1,113	1,383	1,136
Unknown/Missing	22	40	35	37	22
<b>Total</b>	<b>2,053</b>	<b>2,219</b>	<b>2,110</b>	<b>2,523</b>	<b>2,117</b>

\***Perpetrator** was counted each time that he/she was associated with a child victim, therefore one perpetrator may have been counted more than once. For example, if an intake had 2 confirmed victims and each victim had 2 perpetrators, then the count of perpetrators would be 4.



## Military

### Reported and Confirmed Child Victims by Parent's Military Branch, CY 2018-2022

Military Branch	Reported					Confirmed				
	Children (duplicated count)					Children (duplicated count)				
	2018	2019	2020	2021	2022	2018	2019	2020	2021	2022
Air Force	5	16	22	19	13	0	3	3	4	0
Army	156	129	140	99	99	30	20	22	15	4
Coast Guard	1	0	0	0	1	0	0	0	0	0
Marines	17	29	22	22	22	4	0	6	3	2
Navy	30	43	30	32	57	0	8	4	5	6
National Guard	0	0	0	0	0	0	0	0	0	0
<b>Total</b>	<b>209</b>	<b>217</b>	<b>214</b>	<b>172</b>	<b>192</b>	<b>34</b>	<b>31</b>	<b>35</b>	<b>27</b>	<b>12</b>

### Total Reported and Confirmed Child Victims by Parent's Military Rank, CY 2018-2022

Military Rank	Reported					Confirmed				
	Children (duplicated count)					Children (duplicated count)				
	2018	2019	2020	2021	2022	2018	2019	2020	2021	2022
Unspecified	95	92	114	76	93	9	16	26	10	6
Enlisted	109	121	92	87	94	23	15	9	13	6
Non-Commissioned	2	0	8	0	1	2	0	0	0	0
Officer	3	4	0	9	4	0	0	0	4	0
<b>Total</b>	<b>209</b>	<b>217</b>	<b>214</b>	<b>172</b>	<b>192</b>	<b>34</b>	<b>31</b>	<b>35</b>	<b>27</b>	<b>12</b>

## Military

### Number of Children Reported and Confirmed by Report Source, CY 2018-2022

Mandated Reporters*	Reported					Confirmed				
	Children (duplicated count)					Children (duplicated count)				
	2018	2019	2020	2021	2022	2018	2019	2020	2021	2022
Social Services Personnel	46	52	40	58	65	4	0	4	11	0
Medical Personnel	36	34	42	23	28	6	2	5	5	7
Mental Health Personnel	6	1	5	6	7	1	0	3	0	0
Legal, Law Enforcement, or Criminal Justice Personnel	77	40	72	55	58	19	12	20	8	5
Education Personnel	23	34	5	11	18	1	7	1	3	0
Child Day Care Provider	0	0	3	0	3	0	0	0	0	0
Foster/Substitute Care Provider	0	0	0	0	0	0	0	0	0	0
<b>Total Mandatory Reporters</b>	<b>188</b>	<b>161</b>	<b>167</b>	<b>153</b>	<b>179</b>	<b>31</b>	<b>21</b>	<b>33</b>	<b>27</b>	<b>12</b>

Other Reporters	Reported					Confirmed				
	Children (duplicated count)					Children (duplicated count)				
	2018	2019	2020	2021	2022	2018	2019	2020	2021	2022
Alleged Victim	0	16	0	0	0	0	3	0	0	0
Parent	9	11	10	4	8	1	3	2	0	0
Other Relative	0	6	8	0	0	0	0	0	0	0
Friends/Neighbor	4	3	12	2	0	2	0	0	0	0
Anonymous	2	2	3	1	0	0	0	0	0	0
Other	1	2	7	6	4	0	1	0	0	0
Unknown/Missing	5	16	7	6	1	0	3	0	0	0
<b>Total Other Reporters</b>	<b>21</b>	<b>56</b>	<b>47</b>	<b>19</b>	<b>13</b>	<b>3</b>	<b>10</b>	<b>2</b>	<b>0</b>	<b>0</b>

<b>All Reporters</b>	<b>209</b>	<b>217</b>	<b>214</b>	<b>172</b>	<b>192</b>	<b>34</b>	<b>31</b>	<b>35</b>	<b>27</b>	<b>12</b>
----------------------	------------	------------	------------	------------	------------	-----------	-----------	-----------	-----------	-----------

\*Mandated Reporter: A person who is defined by law (HRS§350-1.1) that is required to report alleged incidents of child abuse and neglect.

## Military

### Number of Confirmed Child Victims by Age, CY 2018-2022

Age	Children (duplicated count)				
	2018	2019	2020	2021	2022
Less Than One Year	4	2	7	5	3
1 Year	1	1	5	5	2
2 Years	2	3	5	3	0
3 Years	2	3	1	1	1
4 Years	3	2	2	4	1
5 Years	2	2	2	2	1
6 Years	4	3	1	2	1
7 Years	0	2	2	2	1
8 Years	2	2	0	0	1
9 Years	0	1	1	1	0
10 Years	0	2	3	0	1
11 Years	2	0	0	1	0
12 Years	2	3	3	0	0
13 Years	2	1	0	0	0
14 Years	2	1	1	0	0
15 Years	1	3	1	1	0
16 Years	4	0	1	0	0
17 Years	1	0	0	0	0
Unknown/Missing	0	0	0	0	0
<b>Total</b>	<b>34</b>	<b>31</b>	<b>35</b>	<b>27</b>	<b>12</b>

### Number of Confirmed Child Victims by Gender, CY 2018-2022

Gender	Children (duplicated count)				
	2018	2019	2020	2021	2022
Male	16	11	14	13	6
Female	18	19	19	13	6
Unknown/Missing	0	1	2	1	0
<b>Total</b>	<b>34</b>	<b>31</b>	<b>35</b>	<b>27</b>	<b>12</b>

## Military

### Number of Confirmed Child Victims by Ethnicity, CY 2018-2022

Ethnicity	Children (duplicated count)				
	2018	2019	2020	2021	2022
American Indian	0	0	0	0	0
Black	2	2	13	4	9
Filipino	0	1	1	0	0
Hawaiian/Part Hawaiian	0	8	0	0	1
Hispanic/Spanish	15	8	2	2	0
Japanese	0	0	1	0	0
Micronesian	0	0	0	0	0
Mixed	0	0	4	0	0
Other Pacific Islander	0	0	0	0	0
Samoan	8	0	2	1	0
Tongan	0	0	1	0	0
Unknown/Missing	0	0	0	0	0
White	9	12	11	20	2
<b>Total</b>	<b>34</b>	<b>31</b>	<b>35</b>	<b>27</b>	<b>12</b>

### Number of Confirmed Child Victims by Severity of Harm, CY 2018-2022

Severity of Harm	Children (duplicated count)				
	2018	2019	2020	2021	2022
Fatal	0	0	1	0	0
Permanent Disability	0	0	0	0	0
Serious	2	0	3	4	1
Treatment Required	0	0	1	0	3
No Treatment Necessary	15	14	13	11	0
No Injury	17	17	17	12	8
<b>Total</b>	<b>34</b>	<b>31</b>	<b>35</b>	<b>27</b>	<b>12</b>